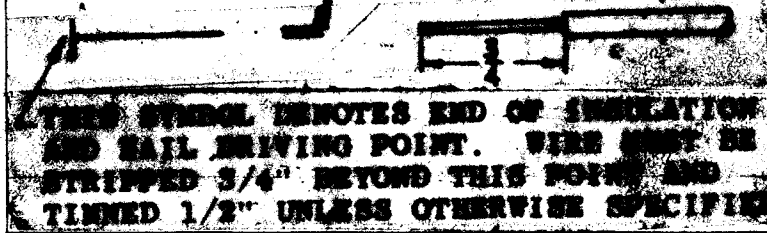
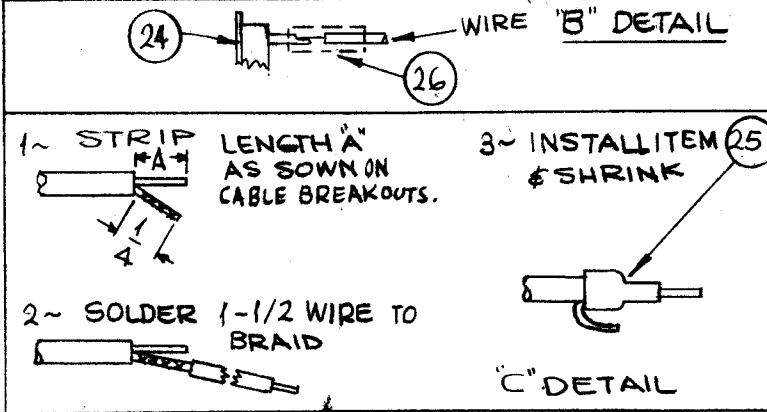
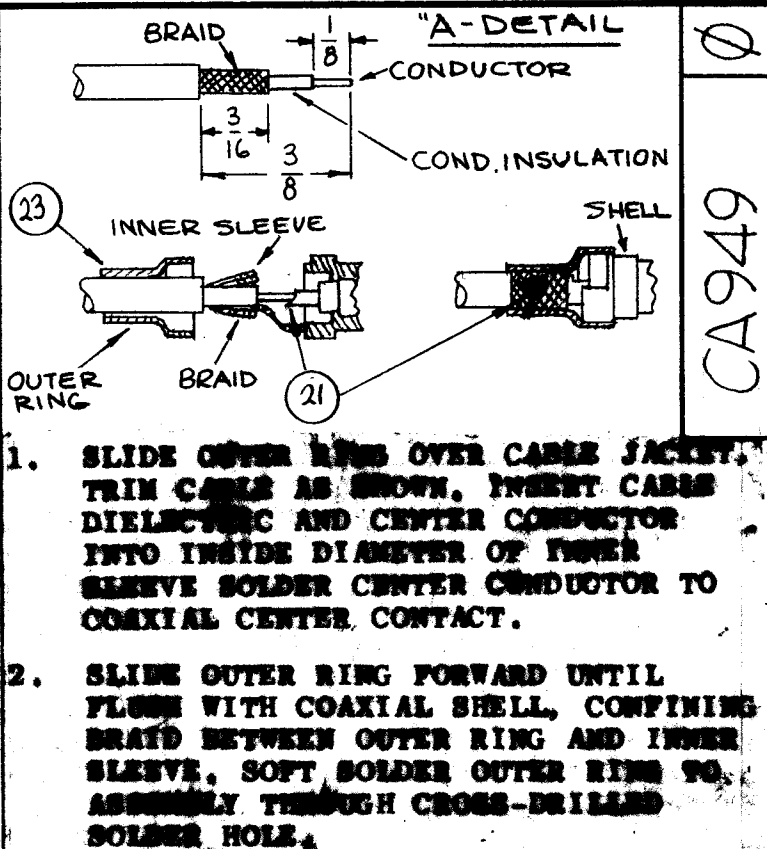


SYMBOL - DENOTES
 ○ = ITEM NO'S
 △ = PIN NO'S
 □ = DETAILS

NOTES



| | | | |
|------------|---------------|------------|--|
| 1 | | VLRB-1 | |
| Q'TY./UNIT | MODEL USED ON | ASS'Y. NO. | |
| SCALE 1:1 | CODE A | # | |

THE CONTENTS OF THIS DRAWING ARE THE EXCLUSIVE PROPERTY OF THE TECHNICAL MATERIEL CORP. ITS UNAUTHORIZED USE OR REPRODUCTION IN WHOLE OR IN PART IS STRICTLY FORBIDDEN.

| REVISIONS | | | | | |
|-----------|---|----------|------------|-------|-----------|
| SYM | DESCRIPTION | DATE | E.M.N. NO. | DRAFT | CHKD APPD |
| X | EXPERIMENTAL RELEASE | 10-28-64 | X | SEC | |
| X1 | C ADDED TO ITEMS 1 THRU 18, -1 ADDED TO IT. 22, IT. 26 WAS PX100-1-18 | 3-17-65 | -A | SEC | |
| Ø | ORIGINAL RELEASE FOR PRODUCTION | 3-19-65 | -A | SEC | JG |

NOTE:
 * INSULATION TO BE STRIPPED AT BREAKOUT THEN PROCEED AS DETAIL C.

| | | | | | |
|-------|----|----------------------|------------------------------|---------------|--------|
| X | 26 | PX100-1-042 | TUBING, BLACK, SZ18 | | |
| X | 25 | PX830-12-1 | SHRINK, TUBING | | |
| 1 | 24 | JJ321-11P | PLUG, MALE 11 PIN | | |
| 1 | 23 | PN120-2 (P/O IT. 24) | PIN, CONTACT, ELECT. COAXIAL | | |
| X | 22 | CD101-1MW | CORD, NYLON LACING | | |
| X | 21 | BS100 | SOLDER, TIN ALLOY | | |
| 5-1/2 | 20 | SHIELD RG174/U | J206 PIN 4 | J211 PIN A1 | A1 GND |
| 2-5/8 | 19 | SHIELD RG174/U | J206 PIN 21 | J211 PIN 6 | |
| 3-1/4 | 18 | LWC26(7) U 51 | | | 15 |
| 3-3/4 | 17 | U 59 | | | 14 |
| 4 | 16 | U 5 | | | 12 |
| 5 | 15 | U 57 | | | 7 |
| 2-1/8 | 14 | U 54 | | | 20 |
| 5-3/4 | 13 | U 53 | | | 3 |
| 6 | 12 | U 32 | | | 2 |
| 6 | 11 | U 50 | | | 1 |
| 4-7/8 | 10 | U 91 | | | 5 |
| 4-7/8 | 9 | U 92 | | | 6 |
| 4-1/4 | 8 | U 90 | | | 8 |
| 4-1/4 | 7 | U 98 | | | 9 |
| 3-1/2 | 6 | U 96 | | | 10 |
| 3-1/2 | 5 | U 97 | | | 11 |
| 2-1/8 | 4 | U 93 | | | 16 |
| 2-1/8 | 3 | U 94 | | | 17 |
| 1-3/4 | 2 | U 24 | | | 19 |
| 1-3/4 | 1 | LWC26(7) U 26 | J206 PIN 18 | OSC (1) PIN 2 | |

| REQ'D. | ITEM | PART NUMBER | FROM | DESCRIPTION | TO | SYMBOL |
|---|------|-------------|--|---------------|---|--------|
| M. GELLMAN LIST OF MATERIAL | | | | | | |
| MATERIAL | | | THE TECHNICAL MATERIEL CORP. MAMARONECK, NEW YORK | | | |
| FINISH | | | TITLE WIRING HARNESS BRANCHED (OSC) | | | |
| UNLESS OTHERWISE SPECIFIED DIMENSIONS ARE IN INCHES AND INCLUDE CHEMICALLY APPLIED OR PLATED FINISHES | | | DRAWN <i>SPG</i> | DATE 10-28-64 | FINAL APPROVAL <i>[Signature]</i> | |
| | | | CHECKED | DATE | | |
| DECIMALS .X ± .05 .XX ± .01 .XXX ± .005 | | | TOLERANCES | | FRACTIONS ± 1/64 ANGLES ± 0° 30' | |
| | | | ELECT. DES. <i>MP</i> | DATE 3-17-65 | CA949 | |
| | | | MECH. DES. <i>MP</i> | DATE 3-17-65 | SHEET | |
| | | | | | REV. LTR. Ø | |