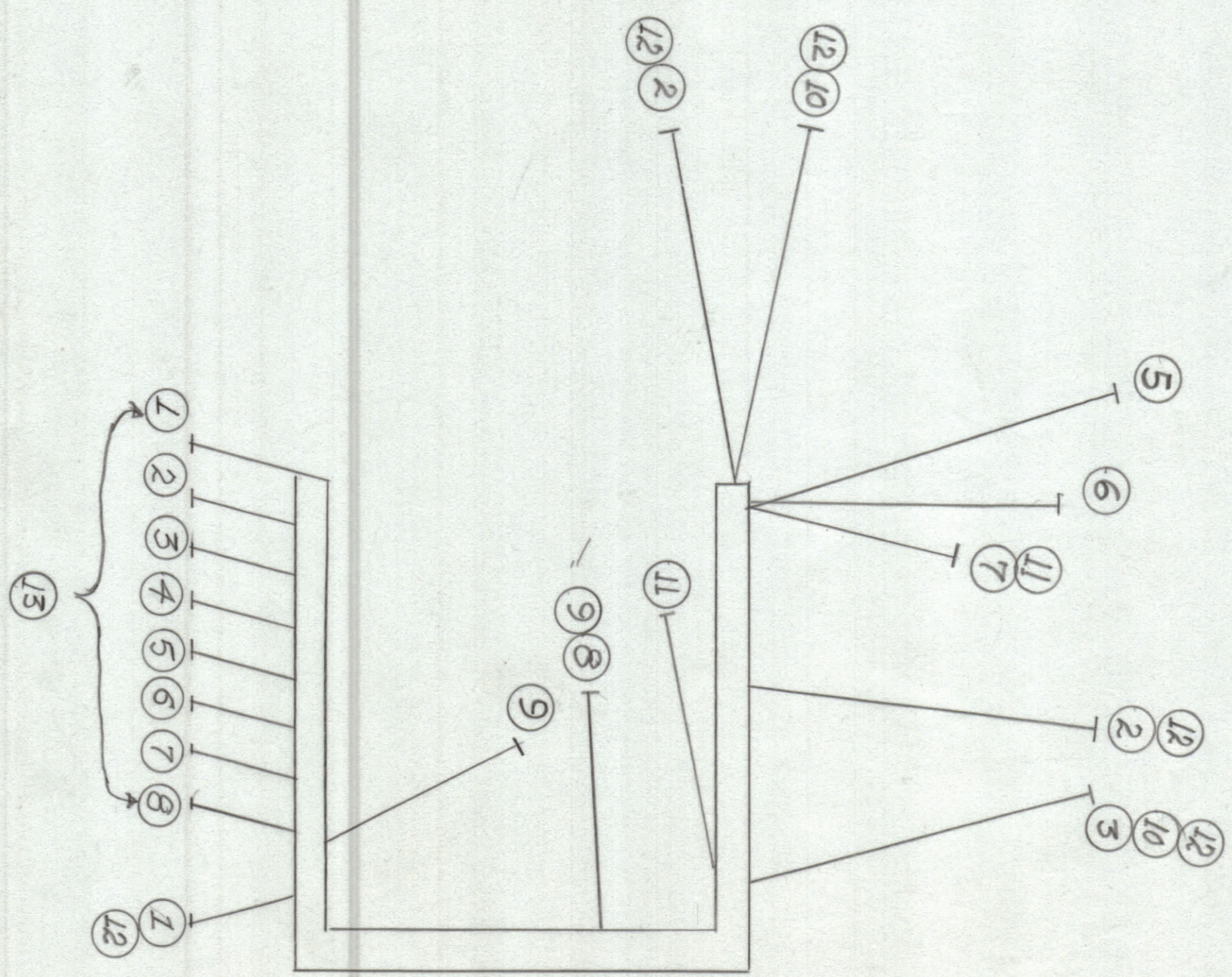
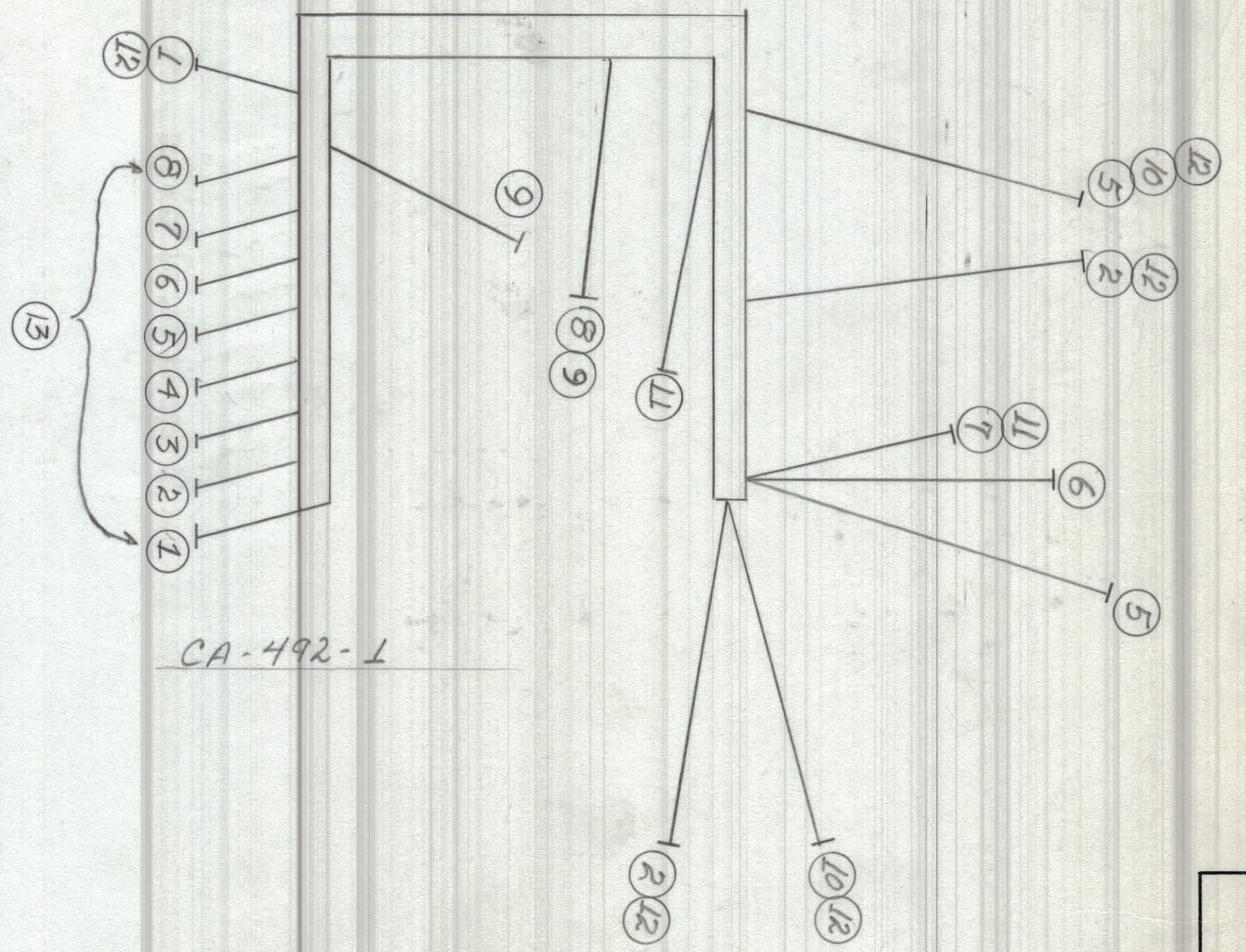


REVISIONS						
ZONE	SYM	DESCRIPTION	DATE	E.M.N. NO.	DRAFT	CHKD
Ø		ORIGINAL RELEASE FOR PRODUCTION	5/5/69	Ø		



REQ'D.	ITEM	PART NUMBER	DESCRIPTION	SYMBOL
	15			
	14	BS100	Lacing Cord	
8	13	TE-120-2	Lug Terminal, Spade	
5	12	TE-133-144	Lug Terminal	
	11	MWC 22 (7) V 92	Wire	
	10			white Red
	9			white grey
	8			white green
	7			green
	6			red
	5			yellow
	4			orange
	3			grey
	2			brown
	1	MWC 22 (7) V-0		blue
				blk

WIRES SHOULD BE PLACED IN CABLE IN NUMERICAL SEQUENCE AS THEY APPEAR IN ITEM COLUMN. SPACE LACING APPROXIMATELY 3/4" APART.

3/4"

1 ea.	QDP-PA-107
QTY./UNIT	MODEL USED ON
SCALE	ASSY. NO.
	CODE

THE CONTENTS OF THIS DRAWING ARE THE EXCLUSIVE PROPERTY OF THE TECHNICAL MATERIEL CORP. ITS UNAUTHORIZED USE OR REPRODUCTION IN WHOLE OR IN PART IS STRICTLY FORBIDDEN.

**LIST OF MATERIAL**

**THE TECHNICAL MATERIEL CORP.**  
MAMARONECK, NEW YORK

**TITLE**  
WIRING, HARNESS - BRANCH

DRAWN	DATE	FINAL APPROVAL	DATE
WHP	10/19/64	JFM	5/5/69
CHECKED	DATE		
EG	10/19/64		
ELECT. DES.	DATE		
MECH. DES.	DATE		

UNLESS OTHERWISE SPECIFIED DIMENSIONS ARE IN INCHES AND INCLUDE CHEMICALLY APPLIED OR PLATED FINISHES

DECIMALS: .X ± .05, .XX ± .01, .XXX ± .005  
FRACTIONS: ± 1/64, ANGLES: ± 0° 30'

CA-942-Ø

NOTES