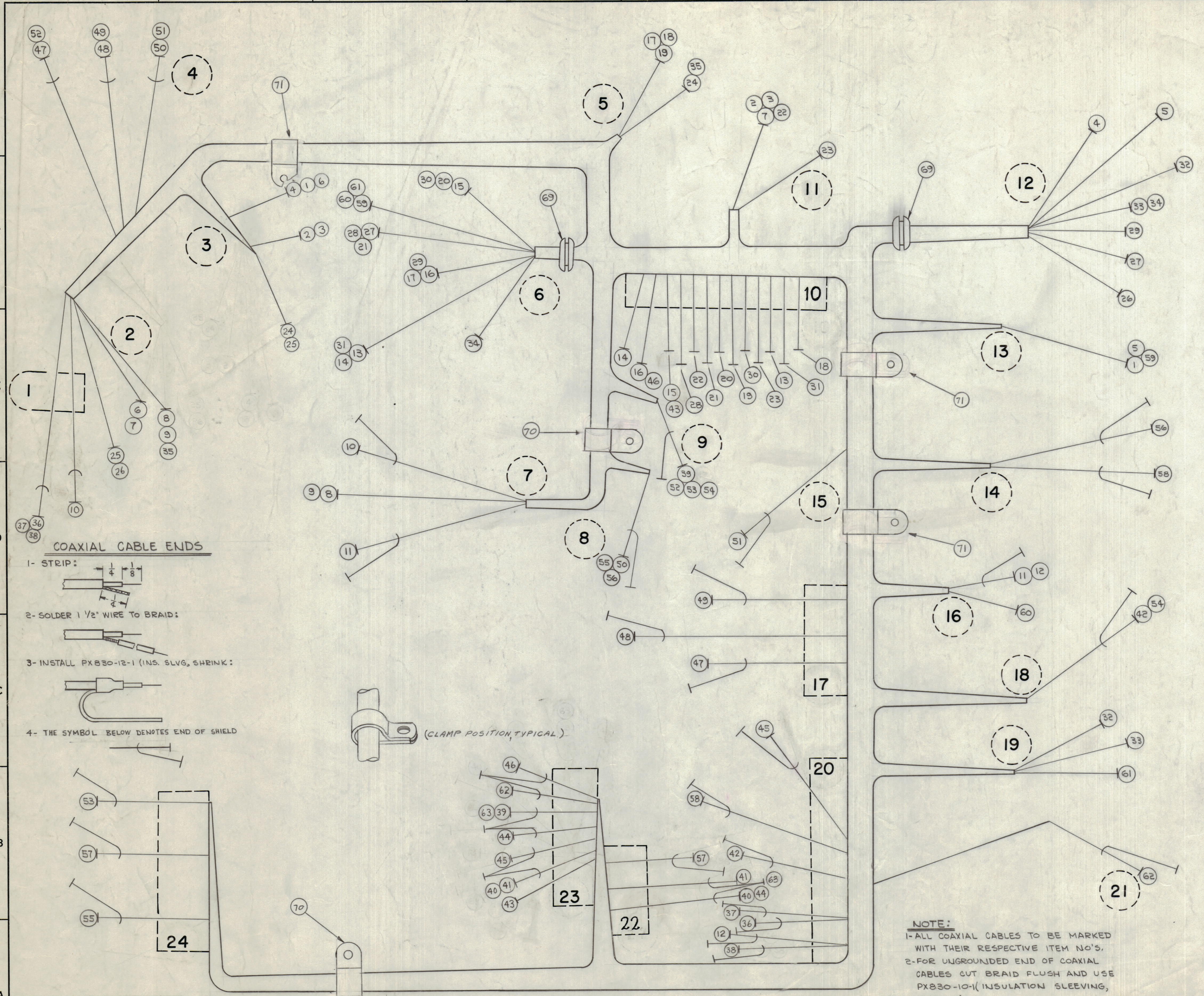
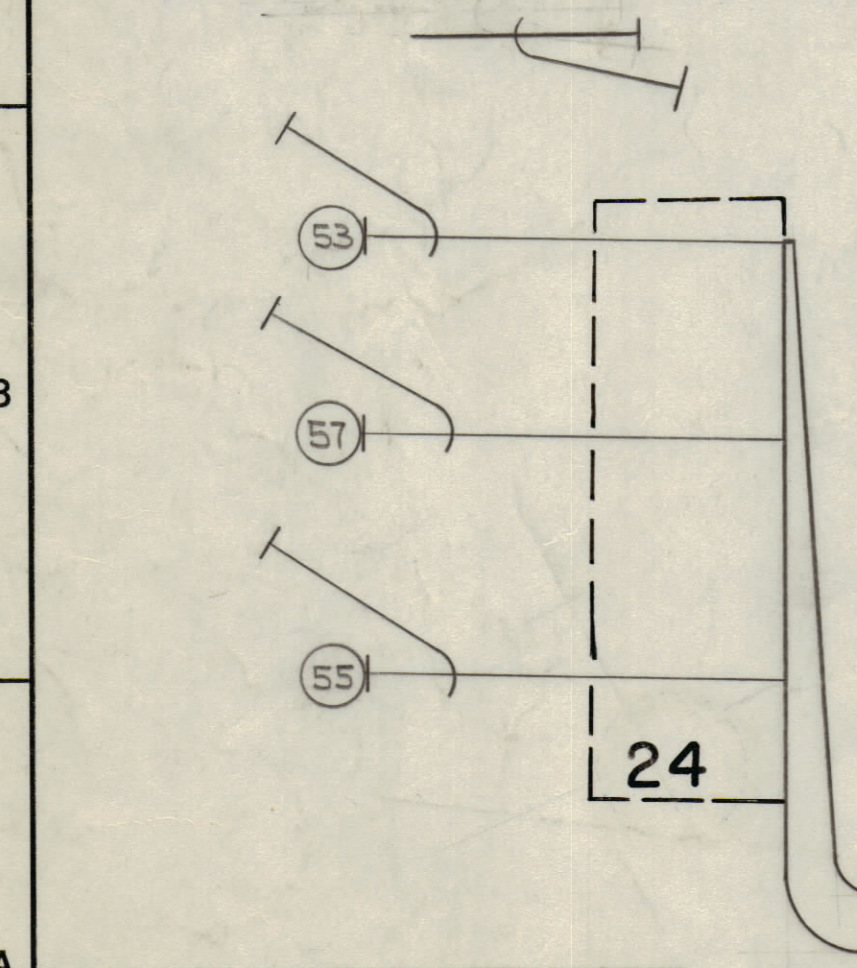


		REVISIONS					
ZONE	SYM	DESCRIPTION	DATE	EM.N. NO.	DRAFT	CHKD	APPD
X1		REDRAWN & REDESIGNED	10-20-64	X1			
X2		ON IT. 20 & IT. 34 RI08 WAS R105	10-24-64	X2			
B&C2	X3	ON B/M WIRE COLORS REVISED	11-16-64	X3			
X4		IT. 69 WAS IT. 63 ; IT. 63 RG174/U ADDED	11-18-64	X4			
X		ORIGINAL RELEASE FOR PRODUCTION	5-19-65				
A		IT. 70, 71 ADDED. IT 69 WAS EY102-2	9/16/65	14825			



COAXIAL CABLE ENDS

- 1- STRIP:
- 2- SOLDER 1 1/2" WIRE TO BRAID:
- 3- INSTALL PX830-12-1 (INS. SLVG, SHRINK):
- 4- THE SYMBOL BELOW DENOTES END OF SHIELD

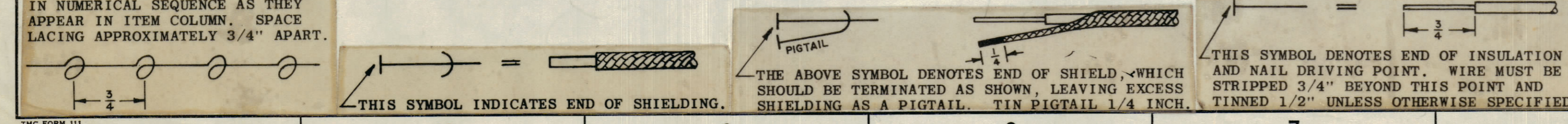


WIRES SHOULD BE PLACED IN CABLE IN NUMERICAL SEQUENCE AS THEY APPEAR IN ITEM COLUMN. SPACE LACING APPROXIMATELY 3/4" APART.

QTY./UNIT	SCALE	MODEL USED ON	ASSY. NO.	DECIMALS	TOLERANCES	FRACTIONS	ELECT. DES.	MECH. DES.	DATE	DATE	DATE	DATE
3	71	CU102-6	CLAMP LOOP-7/16 D									
2	70	CU102-4	CLAMP LOOP-5/16 D									
2	69	EY102-13	GROMMET, RUBBER									
X	68	LA 101	BAND MARKER CABLE (SEE NOTE 1)									
X	67	CD101-1-MW	CORD, NYLON, LACING									
X	66	BS100	SOLDER, TIN ALLOY									
X	65	PX830-12-1	INSULATION, SLEEVING, SHRINK									
X	64	PX830-10-1	INSULATION, SLEEVING, SHRINK									
22	23	63	RG174/U	J111, PIN 8	TP124							
21	23	62	RG174/U	J111, PIN 9	J110							
6	19	61	MWC24(7)U0	J109, PIN B	GND LUG AT C101							
6	16	60	MWC24(7)U0	E101, TERM 3	GND LUG AT C101							
6	13	59	MWC24(7)U0	J108, PIN B	GND LUG AT C101							
14	20	58	RG174/U	J105	TP119							
22	24	57		J102	TP119							
8	14	56		J104	TP113							
8	24	55		J101	TP113							
9	13	54		J107	TP111							
9	24	53		J103	TP111							
4	9	52		S104, POS 1	TP112							
4	15	51		S104, POS 6	TP114							
4	8	50		S104, POS 5	TP115							
4	17	49		S104, POS 4	TP116							
4	17	48		S104, POS 3	TP117							
4	17	47	RG174/U	S104, POS. 2	TP118							
10	23	46	LWC26(7)U5	J111, PIN 10	TP108							
20	23	45	RG174/U	J111, PIN 3	TP122							
22	23	44	RG174/U	J111, PIN 4	TP121							
10	23	43	LWC26(7)U2	J111, PIN 1	TP107							
18	20	42	RG174/U	J106	TP120							
22	23	41		J111, PIN 2	TP120							
22	23	40		J111, PIN 2	TP123							
9	23	39		J111, PIN 8	TP111							
1	20	38		S103, POS 4	TP126							
1	20	37		S103, POS 3	TP127							
1	20	36	RG174/U	S103, POS. 2	TP128							
2	5	35	LWC26(7)U91	XDS102	XK101, PIN 8							
6	12	34	MWC24(7)U90	F103	R108							
12	19	33	MWC24(7)U2	J109, PIN A	XF102							
12	19	32	MWC24(7)U7	J109, PIN C	XF103							
6	10	31	LWC26(7)U1	CR107, ANODE	TP102							
6	10	30	U97	CR106, ANODE	TP104							
6	12	29	U93	S105, PIN 4	XQ101-BASE							
6	10	28	U92	C101 POSITIVE	TP107							
6	12	27	U4	S105, PIN 3	C101 POSITIVE							
2	12	26	U94	S105, PIN 3	XDS102							
2	3	25	U4	XDS101	XDS102							
3	5	24	U92	XK101, PIN 7	XDS101							
10	11	23	U94	T101, PIN 10	TP103							
10	11	22	LWC26(7)U4	T101, PIN 9	TP106							
6	10	21	MWC24(7)U9	XQ101, COLLECTOR	TP105							
6	10	20	LWC26(7)U96	R108	TP105							
5	10	19	U90	XK101, PIN 4	TP105							
5	10	18	U9	XK101, PIN 1	TP101							
5	6	17	U95	XQ101, EMITTER	XK101, PIN 9							
6	10	16	U5	XQ102, COLLECTOR	TP108							
6	10	15	U2	CR108 CATHODE	TP107							
6	10	14	U7	XQ102, BASE	TP110							
6	10	13	LWC26(7)U6	XQ102, EMITTER	TP102-B							
16	20	12	RG174/U	E101, TERM 2	TP125							
7	16	11	RG174/U	J112, PIN 5	E101, TERM 1							
1	7	10	RG174/U	S103, POS. 1	J112, PIN 7							
2	7	9	MWC24(7)U96	S102, PIN 1	J112, PIN 1							
2	7	8	U9	S102, PIN 2	J112, PIN 3							
2	11	7	U6	S102, PIN 3	T101, PIN 4							
2	3	6	U3	S102, PIN 4	S101, PIN 1							
12	13	5	U91	XF101	J108, PIN C							
3	12	4	U1	S101, PIN 3	XF101							
3	11	3	U91	T101, PIN 7	S101, PIN 1							
3	11	2	U9	S101, PIN 2	T101, PIN 2							
3	13	1	MWC24(7)U2	J108, PIN A	S104, POS. 4							

NOTE:
 1- ALL COAXIAL CABLES TO BE MARKED WITH THEIR RESPECTIVE ITEM NO'S.
 2- FOR UNGROUNDED END OF COAXIAL CABLES CUT BRAID FLUSH AND USE PX830-10-1 (INSULATION SLEEVING, SHRINK).

NOTES



FROM	TO	REQ'D	ITEM	PART NUMBER	FROM	DESCRIPTION	TO	SYMBOL
BREAKOUT POINTS					M. GELMAN	LIST OF MATERIAL		
						THE TECHNICAL MATERIEL CORP. MAMARONECK, NEW YORK		
						WIRING HARNESS, BRANCHED MAIN		
						CA900		

CA900 A