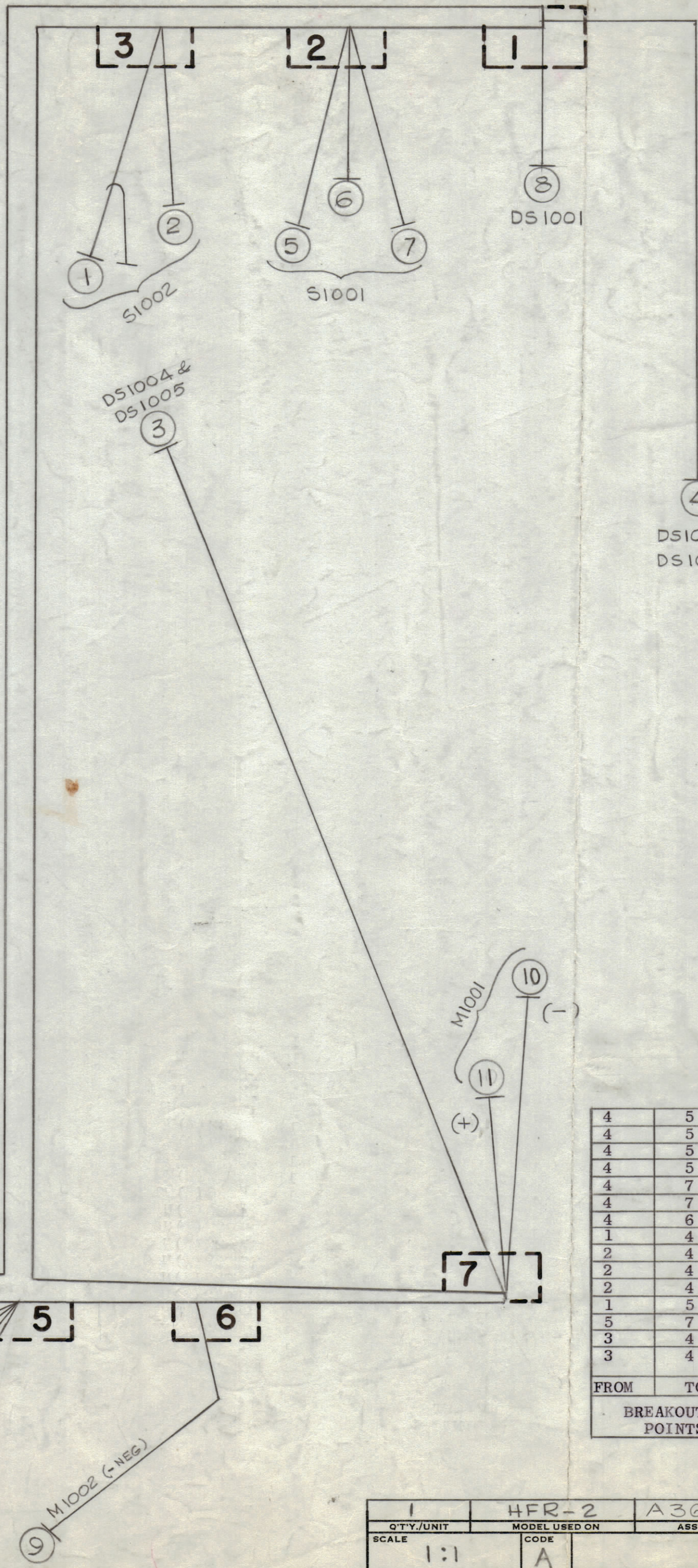
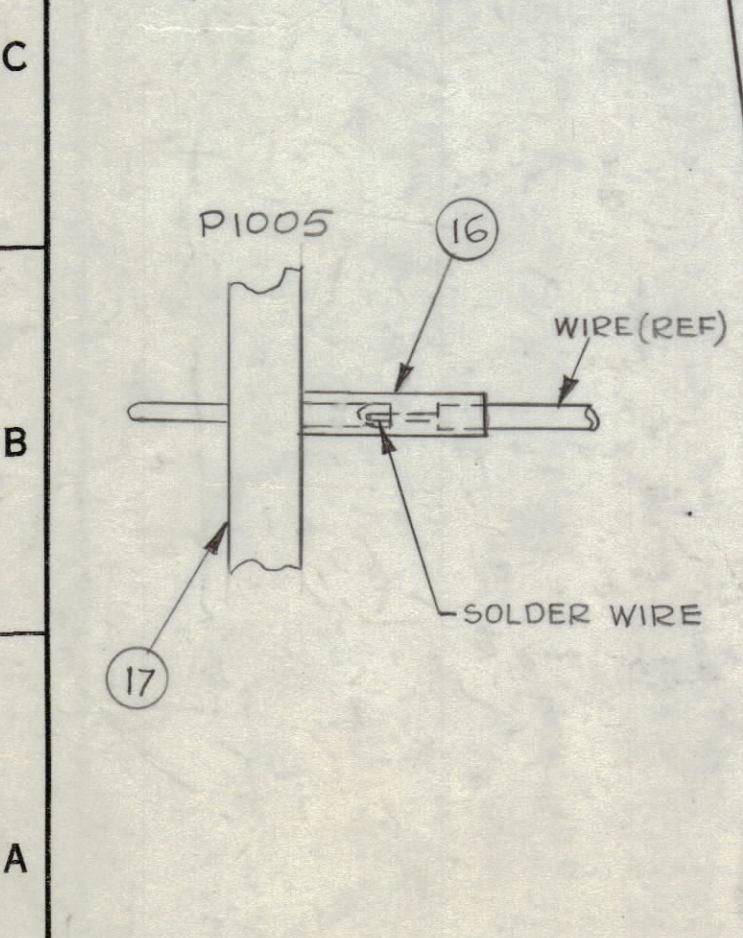
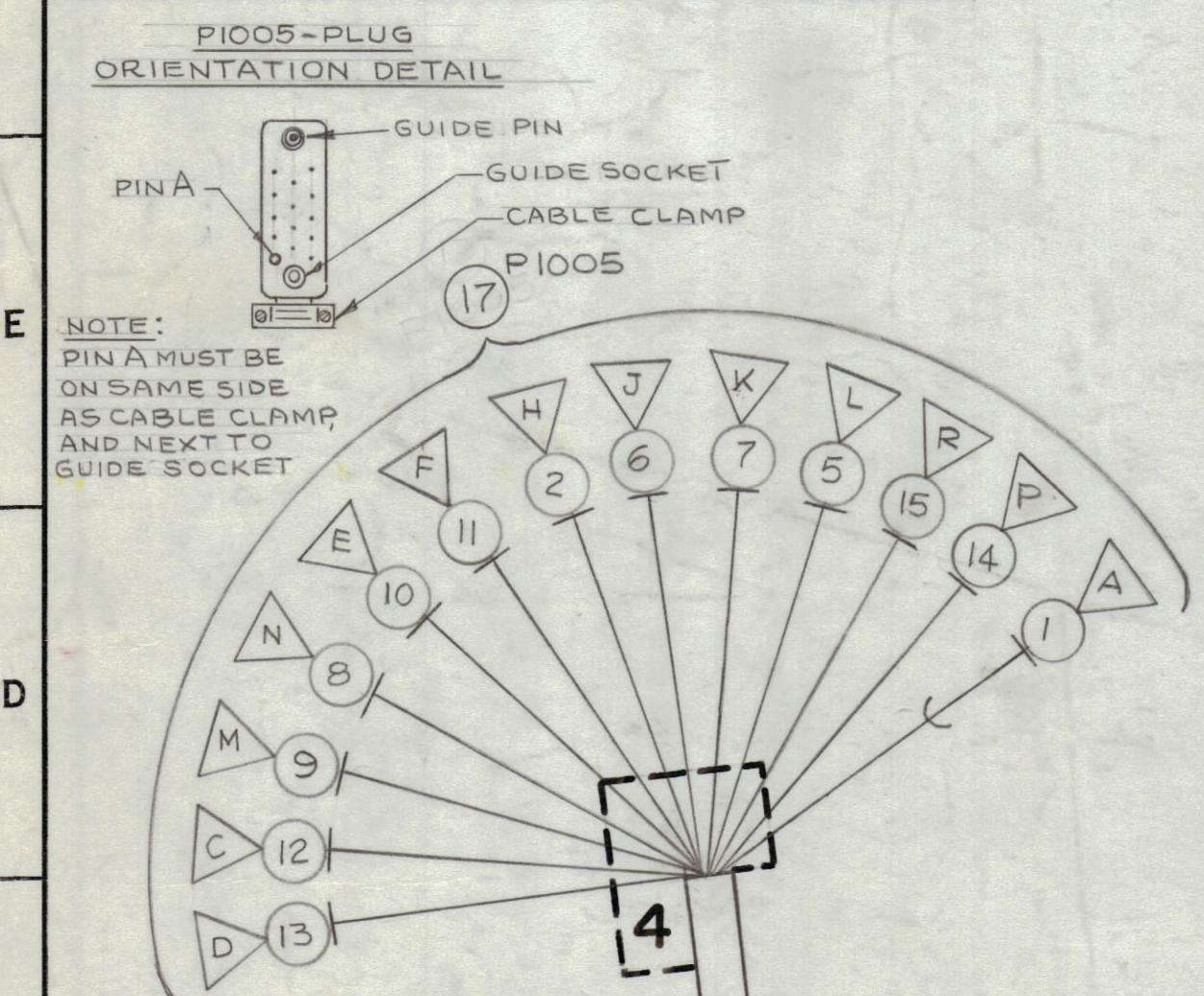
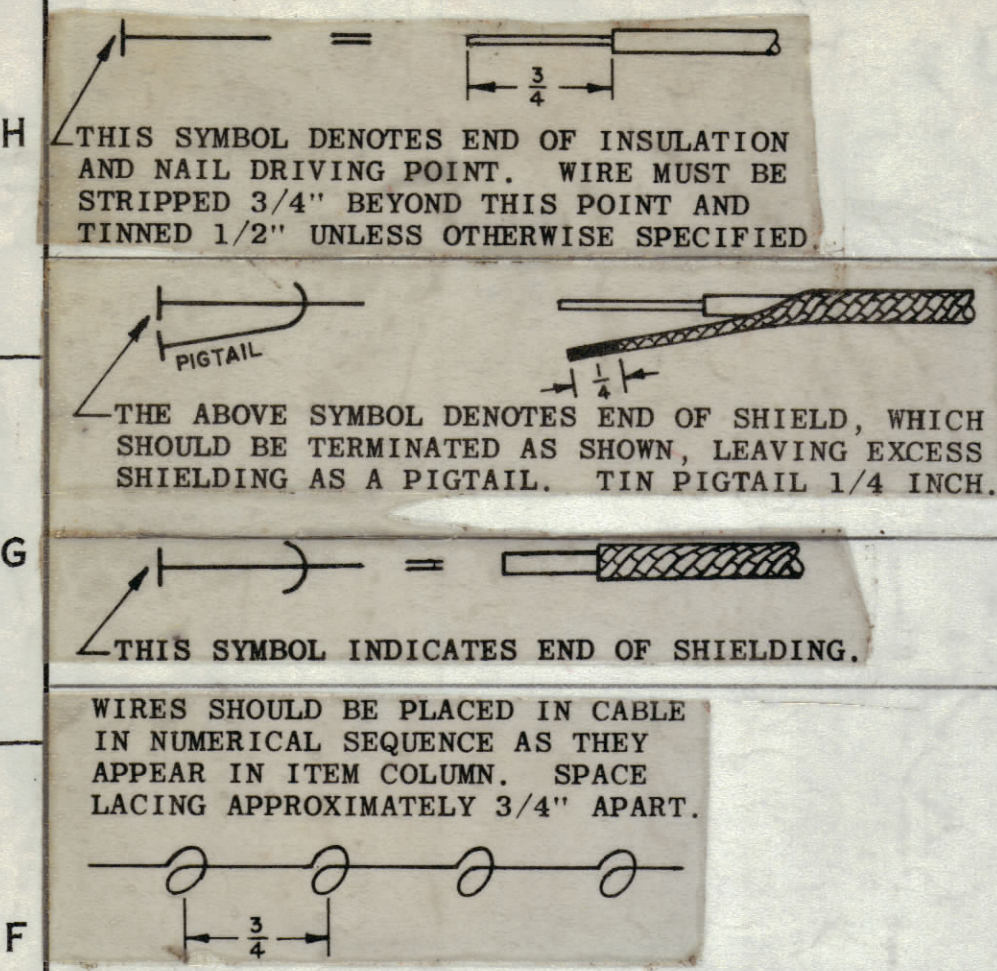


| REVISIONS | | | | | | |
|-----------|-----|--|----------|------------|--------|-----------|
| ZONE | SYM | DESCRIPTION | DATE | E.M.N. NO. | DRAFT | CHKD APPD |
| # | X | EXPERIMENTAL RELEASE | 5-15-64 | # | G.D.L. | |
| # | X1 | ALL SYMBOLS "S1001 & S1002" WERE S1301 & S1302 | 6-30-64 | # | G.D.L. | J |
| E,F-7 | X2 | P1005-PLUG ORIENTATION DETAIL ADDED | 7-8-64 | | J.B. | |
| | X3 | ITEM 1 WAS MWC 22 (7) SN95 | 8-4-64 | # | G.D.L. | |
| | | ORIGINAL RELEASE FOR PRODUCTION | 8-15-64 | # | G.D.L. | |
| C4 | A | ON M1001 CALLOUTS TO #11 REVERSED | 10-30-64 | 12832 | J.B. | @ J |



— SYMBOL NOTES —

○ DENOTES ITEM No'S

△ DENOTES PIN No'S

□ DENOTES BREAKOUT POINT

| FROM | TO | REQ'D. | ITEM | PART NUMBER | DESCRIPTION | SYMBOL |
|------|----|--------|------|----------------|----------------------|-----------------|
| | | | 19 | BS-100 | SOLDER, SOFT | |
| | | | 18 | CD-101-1MW | CORD, LACING | |
| 1 | | | 17 | PL225-5-P | PLUG, CONNECTOR | P1005 |
| | | | 16 | PX-830-18-1 | SLEEVING, INSULATION | |
| 4 | 5 | | 15 | MWC22 (7) U1 | P1005 PIN R | TERM STRIP |
| 4 | 5 | | 14 | MWC22 (7) U0 | P1005 PIN D | GRD |
| 4 | 5 | | 13 | MWC22 (7) U96 | P1005-PIN D | R1065 |
| 4 | 5 | | 12 | MWC22 (7) U4 | P1005 PIN C | DS1006 |
| 4 | 7 | | 11 | MWC22 (7) U5 | P1005 PIN F | M1001 (-) |
| 4 | 7 | | 10 | MWC22 (7) U8 | P1005 PIN E | M1001 (+) |
| 4 | 6 | | 9 | MWC22 (7) U9 | P1005 PIN M | M1002 (-) |
| 1 | 4 | | 8 | MWC22 (7) U7 | DS1001 | P1005 PIN N |
| 2 | 4 | | 7 | MWC22 (7) U97 | S1001 | P1005 PIN K |
| 2 | 4 | | 6 | MWC22 (7) U90 | S1001 | P1005 PIN J |
| 2 | 4 | | 5 | MWC22 (7) U2 | S1001 | P1005 PIN L |
| 1 | 5 | | 4 | MWC22 (7) U1 | DS1002 & DS1003 | TERM STRIP |
| 5 | 7 | | 3 | MWC22 (7) U1 | TERM STRIP | DS1004 & DS1005 |
| 3 | 4 | | 2 | MWC22 (7) U6 | S1002 | P1005 PIN H |
| 3 | 4 | | 1 | MWC22 (7) SJ95 | S1002 | P1005 PIN A |

| J. ANGER LIST OF MATERIAL | | | |
|---|---------|------------------------------|-----------|
| MATERIAL | | THE TECHNICAL MATERIEL CORP. | |
| FINISH | | MAMARONECK, NEW YORK | |
| TITLE | | | |
| WIRING HARNESS, BRANCHED CABLE PANEL ASSY HFR-2 | | | |
| DRAWN | DATE | FINAL APPROVAL | DATE |
| G.D.L. | 5-15-64 | J.B. | |
| CHECKED | DATE | DATE | |
| @ | 8-15-64 | | |
| ELECT. DES. | DATE | CA 897 | |
| J. ANGER | 6/30/64 | | |
| MECH. DES. | DATE | SHEET | REV. LTR. |
| | | | A |

| Q'TY./UNIT | MODEL USED ON | ASS'Y. NO. |
|------------|---------------|------------|
| 1 | HFR-2 | A3646 |
| SCALE | CODE | |
| 1:1 | A | |

NOTES

THE CONTENTS OF THIS DRAWING ARE THE EXCLUSIVE PROPERTY OF THE TECHNICAL MATERIEL CORP. ITS UNAUTHORIZED USE OR REPRODUCTION IN WHOLE OR IN PART IS STRICTLY FORBIDDEN.

UNLESS OTHERWISE SPECIFIED DIMENSIONS ARE IN INCHES AND INCLUDE CHEMICALLY APPLIED OR PLATED FINISHES

DECIMALS: .X ± .05, .XX ± .01, .XXX ± .005
 FRACTIONS: ± 1/64 ANGLES ± 0° 30'

CA 897 A