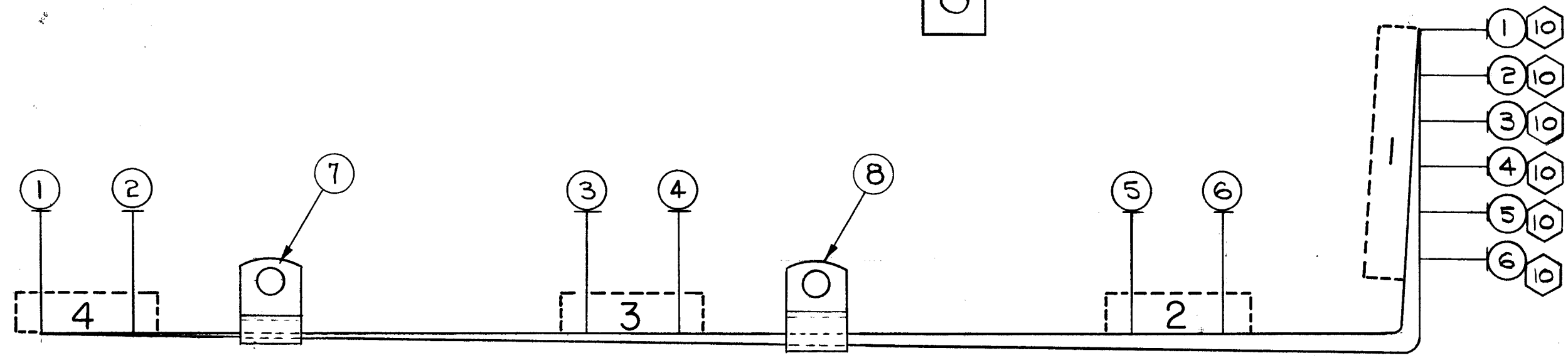



CA-882

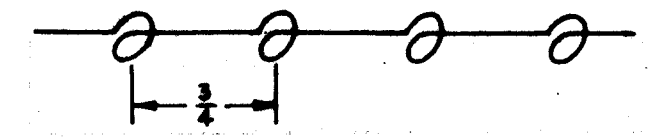
REVISIONS					
SYM	DESCRIPTION	DATE	E.M.N. NO.	DRAFT	CHKD APPD
X	EXPER. RELEASE	3-25-64	1	F.S.	
O	ORIGINAL RELEASE FOR PRODUCTION	3/31/64			



○ DENOTES ITEM NUMBERS  
 ⬡ DENOTES LUGS.

  
 THIS SYMBOL DENOTES END OF INSULATION AND NAIL DRIVING POINT. WIRE MUST BE STRIPPED 3/4" BEYOND THIS POINT AND TINNED 1/2" UNLESS OTHERWISE SPECIFIED.

WIRES SHOULD BE PLACED IN CABLE IN NUMERICAL SEQUENCE AS THEY APPEAR IN ITEM COLUMN. SPACE LACING APPROXIMATELY 3/4" APART.



NOTES

X	11	BS-100	SOLDER, SOFT
6	10	TE-120-2	SPADE LUG
X	9	CD-101-1-MW	CORD, LACING
1	8	CU-102-2	CLAMP, "G" TYPE
1	7	CU-101-1	CLAMP, "G" TYPE

1	2	4"	6	MWC22(7)U91	TB101, TERMINAL 6	LS101
1	2	5"	5	U1	5	LS101
1	3	9"	4	U92	4	LS102
1	3	10"	3	U2	3	LS102
1	4	14"	2	U93	2	LS103
1	4	15"	1	MWC22(7)U3	TB101, TERMINAL 1	LS103

FROM	TO	REQ'D.	ITEM	PART NUMBER	FROM	DESCRIPTION	TO	SYMBOL
------	----	--------	------	-------------	------	-------------	----	--------

BREAK-OUT POINTS: R. HAY  
 LIST OF MATERIAL: THE TECHNICAL MATERIEL CORP. MAMARONECK, NEW YORK

MATERIAL		FINISH		TITLE	
UNLESS OTHERWISE SPECIFIED DIMENSIONS ARE IN INCHES AND INCLUDE CHEMICALLY APPLIED OR PLATED FINISHES		DRAWN: <i>G. Sencen</i>		DATE: 3-25-64	
DECIMALS: .X ± .05, .XX ± .01, .XXX ± .005		CHECKED: <i>H.D.</i>		DATE: 3/31/64	
FRACTIONS: ± 1/64, ANGLES: ± 0° 30'		ELECT. DES.:		DATE: 3/31/64	
TOLERANCES:		MECH. DES.:		DATE: 3-31-64	
THE CONTENTS OF THIS DRAWING ARE THE EXCLUSIVE PROPERTY OF THE TECHNICAL MATERIEL CORP. ITS UNAUTHORIZED USE OR REPRODUCTION IN WHOLE OR IN PART IS STRICTLY FORBIDDEN.				FINAL APPROVAL: <i>R.H.</i>	
SCALE: 1:1				DATE: 3-31-64	
MODEL USED ON: LSP-3				DATE: 3-31-64	
CODE: A				DATE: 3-31-64	
ASS'Y. NO.:				DATE: 3-31-64	
TITLE: WIRING HARNESS, ASSEMBLY				DATE: 3-31-64	
DRAWN: <i>G. Sencen</i>				DATE: 3-25-64	
CHECKED: <i>H.D.</i>				DATE: 3/31/64	
ELECT. DES.:				DATE: 3/31/64	
MECH. DES.:				DATE: 3-31-64	
THE TECHNICAL MATERIEL CORP. MAMARONECK, NEW YORK				DATE: 3-31-64	
UNLESS OTHERWISE SPECIFIED DIMENSIONS ARE IN INCHES AND INCLUDE CHEMICALLY APPLIED OR PLATED FINISHES				DATE: 3-31-64	
DECIMALS: .X ± .05, .XX ± .01, .XXX ± .005				DATE: 3-31-64	
FRACTIONS: ± 1/64, ANGLES: ± 0° 30'				DATE: 3-31-64	
TOLERANCES:				DATE: 3-31-64	
THE CONTENTS OF THIS DRAWING ARE THE EXCLUSIVE PROPERTY OF THE TECHNICAL MATERIEL CORP. ITS UNAUTHORIZED USE OR REPRODUCTION IN WHOLE OR IN PART IS STRICTLY FORBIDDEN.				DATE: 3-31-64	
SCALE: 1:1				DATE: 3-31-64	
MODEL USED ON: LSP-3				DATE: 3-31-64	
CODE: A				DATE: 3-31-64	
ASS'Y. NO.:				DATE: 3-31-64	
TITLE: WIRING HARNESS, ASSEMBLY				DATE: 3-31-64	
DRAWN: <i>G. Sencen</i>				DATE: 3-25-64	
CHECKED: <i>H.D.</i>				DATE: 3/31/64	
ELECT. DES.:				DATE: 3/31/64	
MECH. DES.:				DATE: 3-31-64	
THE TECHNICAL MATERIEL CORP. MAMARONECK, NEW YORK				DATE: 3-31-64	
UNLESS OTHERWISE SPECIFIED DIMENSIONS ARE IN INCHES AND INCLUDE CHEMICALLY APPLIED OR PLATED FINISHES				DATE: 3-31-64	
DECIMALS: .X ± .05, .XX ± .01, .XXX ± .005				DATE: 3-31-64	
FRACTIONS: ± 1/64, ANGLES: ± 0° 30'				DATE: 3-31-64	
TOLERANCES:				DATE: 3-31-64	
THE CONTENTS OF THIS DRAWING ARE THE EXCLUSIVE PROPERTY OF THE TECHNICAL MATERIEL CORP. ITS UNAUTHORIZED USE OR REPRODUCTION IN WHOLE OR IN PART IS STRICTLY FORBIDDEN.				DATE: 3-31-64	
SCALE: 1:1				DATE: 3-31-64	
MODEL USED ON: LSP-3				DATE: 3-31-64	
CODE: A				DATE: 3-31-64	
ASS'Y. NO.:				DATE: 3-31-64	
TITLE: WIRING HARNESS, ASSEMBLY				DATE: 3-31-64	
DRAWN: <i>G. Sencen</i>				DATE: 3-25-64	
CHECKED: <i>H.D.</i>				DATE: 3/31/64	
ELECT. DES.:				DATE: 3/31/64	
MECH. DES.:				DATE: 3-31-64	
THE TECHNICAL MATERIEL CORP. MAMARONECK, NEW YORK				DATE: 3-31-64	
UNLESS OTHERWISE SPECIFIED DIMENSIONS ARE IN INCHES AND INCLUDE CHEMICALLY APPLIED OR PLATED FINISHES				DATE: 3-31-64	
DECIMALS: .X ± .05, .XX ± .01, .XXX ± .005				DATE: 3-31-64	
FRACTIONS: ± 1/64, ANGLES: ± 0° 30'				DATE: 3-31-64	
TOLERANCES:				DATE: 3-31-64	
THE CONTENTS OF THIS DRAWING ARE THE EXCLUSIVE PROPERTY OF THE TECHNICAL MATERIEL CORP. ITS UNAUTHORIZED USE OR REPRODUCTION IN WHOLE OR IN PART IS STRICTLY FORBIDDEN.				DATE: 3-31-64	
SCALE: 1:1				DATE: 3-31-64	
MODEL USED ON: LSP-3				DATE: 3-31-64	
CODE: A				DATE: 3-31-64	
ASS'Y. NO.:				DATE: 3-31-64	
TITLE: WIRING HARNESS, ASSEMBLY				DATE: 3-31-64	
DRAWN: <i>G. Sencen</i>				DATE: 3-25-64	
CHECKED: <i>H.D.</i>				DATE: 3/31/64	
ELECT. DES.:				DATE: 3/31/64	
MECH. DES.:				DATE: 3-31-64	
THE TECHNICAL MATERIEL CORP. MAMARONECK, NEW YORK				DATE: 3-31-64	
UNLESS OTHERWISE SPECIFIED DIMENSIONS ARE IN INCHES AND INCLUDE CHEMICALLY APPLIED OR PLATED FINISHES				DATE: 3-31-64	
DECIMALS: .X ± .05, .XX ± .01, .XXX ± .005				DATE: 3-31-64	
FRACTIONS: ± 1/64, ANGLES: ± 0° 30'				DATE: 3-31-64	
TOLERANCES:				DATE: 3-31-64	
THE CONTENTS OF THIS DRAWING ARE THE EXCLUSIVE PROPERTY OF THE TECHNICAL MATERIEL CORP. ITS UNAUTHORIZED USE OR REPRODUCTION IN WHOLE OR IN PART IS STRICTLY FORBIDDEN.				DATE: 3-31-64	
SCALE: 1:1				DATE: 3-31-64	
MODEL USED ON: LSP-3				DATE: 3-31-64	
CODE: A				DATE: 3-31-64	
ASS'Y. NO.:				DATE: 3-31-64	
TITLE: WIRING HARNESS, ASSEMBLY				DATE: 3-31-64	
DRAWN: <i>G. Sencen</i>				DATE: 3-25-64	
CHECKED: <i>H.D.</i>				DATE: 3/31/64	
ELECT. DES.:				DATE: 3/31/64	
MECH. DES.:				DATE: 3-31-64	
THE TECHNICAL MATERIEL CORP. MAMARONECK, NEW YORK				DATE: 3-31-64	
UNLESS OTHERWISE SPECIFIED DIMENSIONS ARE IN INCHES AND INCLUDE CHEMICALLY APPLIED OR PLATED FINISHES				DATE: 3-31-64	
DECIMALS: .X ± .05, .XX ± .01, .XXX ± .005				DATE: 3-31-64	
FRACTIONS: ± 1/64, ANGLES: ± 0° 30'				DATE: 3-31-64	
TOLERANCES:				DATE: 3-31-64	
THE CONTENTS OF THIS DRAWING ARE THE EXCLUSIVE PROPERTY OF THE TECHNICAL MATERIEL CORP. ITS UNAUTHORIZED USE OR REPRODUCTION IN WHOLE OR IN PART IS STRICTLY FORBIDDEN.				DATE: 3-31-64	
SCALE: 1:1				DATE: 3-31-64	
MODEL USED ON: LSP-3				DATE: 3-31-64	
CODE: A				DATE: 3-31-64	
ASS'Y. NO.:				DATE: 3-31-64	
TITLE: WIRING HARNESS, ASSEMBLY				DATE: 3-31-64	
DRAWN: <i>G. Sencen</i>				DATE: 3-25-64	
CHECKED: <i>H.D.</i>				DATE: 3/31/64	
ELECT. DES.:				DATE: 3/31/64	
MECH. DES.:				DATE: 3-31-64	
THE TECHNICAL MATERIEL CORP. MAMARONECK, NEW YORK				DATE: 3-31-64	
UNLESS OTHERWISE SPECIFIED DIMENSIONS ARE IN INCHES AND INCLUDE CHEMICALLY APPLIED OR PLATED FINISHES				DATE: 3-31-64	
DECIMALS: .X ± .05, .XX ± .01, .XXX ± .005				DATE: 3-31-64	
FRACTIONS: ± 1/64, ANGLES: ± 0° 30'				DATE: 3-31-64	
TOLERANCES:				DATE: 3-31-64	
THE CONTENTS OF THIS DRAWING ARE THE EXCLUSIVE PROPERTY OF THE TECHNICAL MATERIEL CORP. ITS UNAUTHORIZED USE OR REPRODUCTION IN WHOLE OR IN PART IS STRICTLY FORBIDDEN.				DATE: 3-31-64	
SCALE: 1:1				DATE: 3-31-64	
MODEL USED ON: LSP-3				DATE: 3-31-64	
CODE: A				DATE: 3-31-64	
ASS'Y. NO.:				DATE: 3-31-64	
TITLE: WIRING HARNESS, ASSEMBLY				DATE: 3-31-64	
DRAWN: <i>G. Sencen</i>				DATE: 3-25-64	
CHECKED: <i>H.D.</i>				DATE: 3/31/64	
ELECT. DES.:				DATE: 3/31/64	
MECH. DES.:				DATE: 3-31-64	
THE TECHNICAL MATERIEL CORP. MAMARONECK, NEW YORK				DATE: 3-31-64	
UNLESS OTHERWISE SPECIFIED DIMENSIONS ARE IN INCHES AND INCLUDE CHEMICALLY APPLIED OR PLATED FINISHES				DATE: 3-31-64	
DECIMALS: .X ± .05, .XX ± .01, .XXX ± .005				DATE: 3-31-64	
FRACTIONS: ± 1/64, ANGLES: ± 0° 30'				DATE: 3-31-64	
TOLERANCES:				DATE: 3-31-64	
THE CONTENTS OF THIS DRAWING ARE THE EXCLUSIVE PROPERTY OF THE TECHNICAL MATERIEL CORP. ITS UNAUTHORIZED USE OR REPRODUCTION IN WHOLE OR IN PART IS STRICTLY FORBIDDEN.				DATE: 3-31-64	
SCALE: 1:1				DATE: 3-31-64	
MODEL USED ON: LSP-3				DATE: 3-31-64	
CODE: A				DATE: 3-31-64	
ASS'Y. NO.:				DATE: 3-31-64	
TITLE: WIRING HARNESS, ASSEMBLY				DATE: 3-31-64	
DRAWN: <i>G. Sencen</i>				DATE: 3-25-64	
CHECKED: <i>H.D.</i>				DATE: 3/31/64	
ELECT. DES.:				DATE: 3/31/64	
MECH. DES.:				DATE: 3-31-64	
THE TECHNICAL MATERIEL CORP. MAMARONECK, NEW YORK				DATE: 3-31-64	
UNLESS OTHERWISE SPECIFIED DIMENSIONS ARE IN INCHES AND INCLUDE CHEMICALLY APPLIED OR PLATED FINISHES				DATE: 3-31-64	
DECIMALS: .X ± .05, .XX ± .01, .XXX ± .005				DATE: 3-31-64	
FRACTIONS: ± 1/64, ANGLES: ± 0° 30'				DATE: 3-31-64	
TOLERANCES:				DATE: 3-31-64	
THE CONTENTS OF THIS DRAWING ARE THE EXCLUSIVE PROPERTY OF THE TECHNICAL MATERIEL CORP. ITS UNAUTHORIZED USE OR REPRODUCTION IN WHOLE OR IN PART IS STRICTLY FORBIDDEN.				DATE: 3-31-64	
SCALE: 1:1				DATE: 3-31-64	
MODEL USED ON: LSP-3				DATE: 3-31-64	
CODE: A				DATE: 3-31-64	
ASS'Y. NO.:				DATE: 3-31-64	
TITLE: WIRING HARNESS, ASSEMBLY				DATE: 3-31-64	
DRAWN: <i>G. Sencen</i>				DATE: 3-25-64	
CHECKED: <i>H.D.</i>				DATE: 3/31/64	
ELECT. DES.:				DATE: 3/31/64	
MECH. DES.:				DATE: 3-31-64	
THE TECHNICAL MATERIEL CORP. MAMARONECK, NEW YORK				DATE: 3-31-64	
UNLESS OTHERWISE SPECIFIED DIMENSIONS ARE IN INCHES AND INCLUDE CHEMICALLY APPLIED OR PLATED FINISHES				DATE: 3-31-64	
DECIMALS: .X ± .05, .XX ± .01, .XXX ± .005				DATE: 3-31-64	
FRACTIONS: ± 1/64, ANGLES: ± 0° 30'				DATE: 3-31-64	
TOLERANCES:				DATE: 3-31-64	
THE CONTENTS OF THIS DRAWING ARE THE EXCLUSIVE PROPERTY OF THE TECHNICAL MATERIEL CORP. ITS UNAUTHORIZED USE OR REPRODUCTION IN WHOLE OR IN PART IS STRICTLY FORBIDDEN.				DATE: 3-31-64	
SCALE: 1:1				DATE: 3-31-64	
MODEL USED ON: LSP-3				DATE: 3-31-64	
CODE: A				DATE: 3-31-64	
ASS'Y. NO.:				DATE: 3-31-64	
TITLE: WIRING HARNESS, ASSEMBLY				DATE: 3-31-64	
DRAWN: <i>G. Sencen</i>				DATE: 3-25-64	
CHECKED: <i>H.D.</i>				DATE: 3/31/64	
ELECT. DES.:				DATE: 3/31/64	
MECH. DES.:				DATE: 3-31-64	
THE TECHNICAL MATERIEL CORP. MAMARONECK, NEW YORK				DATE: 3-31-64	
UNLESS OTHERWISE SPECIFIED DIMENSIONS ARE IN INCHES AND INCLUDE CHEMICALLY APPLIED OR PLATED FINISHES				DATE: 3-31-64	
DECIMALS: .X ± .05, .XX ± .01, .XXX ± .005				DATE: 3-31-64	
FRACTIONS: ± 1/64, ANGLES: ± 0° 30'				DATE: 3-31-64	
TOLERANCES:				DATE: 3-31-64	
THE CONTENTS OF THIS DRAWING ARE THE EXCLUSIVE PROPERTY OF THE TECHNICAL MATERIEL CORP. ITS UNAUTHORIZED USE OR REPRODUCTION IN WHOLE OR IN PART IS STRICTLY FORBIDDEN.				DATE: 3-31-64	
SCALE: 1:1				DATE: 3-31-64	
MODEL USED ON: LSP-3				DATE: 3-31-64	
CODE: A				DATE: 3-31-64	
ASS'Y. NO.:				DATE: 3-31-64	
TITLE: WIRING HARNESS, ASSEMBLY				DATE: 3-31-64	
DRAWN: <i>G. Sencen</i>				DATE: 3-25-64	
CHECKED: <i>H.D.</i>				DATE: 3/31/64	
ELECT. DES.:				DATE: 3/31/64	
MECH. DES.:				DATE: 3-31-64	
THE TECHNICAL MATERIEL CORP. MAMARONECK, NEW YORK				DATE: 3-31-64	
UNLESS OTHERWISE SPECIFIED DIMENSIONS ARE IN INCHES AND INCLUDE CHEMICALLY APPLIED OR PLATED FINISHES				DATE: 3-31-64	
DECIMALS: .X ± .05, .XX ± .01, .XXX ± .005				DATE: 3-31-64	
FRACTIONS: ± 1/64, ANGLES: ± 0° 30'				DATE: 3-31-64	
TOLERANCES:				DATE: 3-31-64	
THE CONTENTS OF THIS DRAWING ARE THE EXCLUSIVE PROPERTY OF THE TECHNICAL MATERIEL CORP. ITS UNAUTHORIZED USE OR REPRODUCTION IN WHOLE OR IN PART IS STRICTLY FORBIDDEN.				DATE: 3-31-64	
SCALE: 1:1				DATE: 3-31-64	
MODEL USED ON: LSP-3				DATE: 3-31-64	
CODE: A				DATE: 3-31-64	
ASS'Y. NO.:				DATE: 3-31-64	
TITLE: WIRING HARNESS, ASSEMBLY				DATE: 3-31-64	
DRAWN: <i>G. Sencen</i>				DATE: 3-25-64	
CHECKED: <i>H.D.</i>				DATE: 3/31/64	
ELECT. DES.:				DATE: 3/31/64	
MECH. DES.:				DATE: 3-31-64	
THE TECHNICAL MATERIEL CORP. MAMARONECK, NEW YORK				DATE: 3-31-64	
UNLESS OTHERWISE SPECIFIED DIMENSIONS ARE IN INCHES AND INCLUDE CHEMICALLY APPLIED OR PLATED FINISHES				DATE: 3-31-64	
DECIMALS: .X ± .05, .XX ± .01, .XXX ± .005				DATE: 3-31-64	
FRACTIONS: ± 1/64, ANGLES: ± 0° 30'				DATE: 3-31-64	
TOLERANCES:				DATE: 3-31-64	
THE CONTENTS OF THIS DRAWING ARE THE EXCLUSIVE PROPERTY OF THE TECHNICAL MATERIEL CORP. ITS UNAUTHORIZED USE OR REPRODUCTION IN WHOLE OR IN PART IS STRICTLY FORBIDDEN.				DATE: 3-31-64	
SCALE: 1:1				DATE: 3-31-64	
MODEL USED ON: LSP-3				DATE: 3-31-64	
CODE: A				DATE: 3-31-64	
ASS'Y. NO.:				DATE: 3-31-64	
TITLE: WIRING HARNESS, ASSEMBLY				DATE: 3-31-64	
DRAWN: <i>G. Sencen</i>				DATE: 3-25-64	
CHECKED: <i>H.D.</i>				DATE: 3/31/64	
ELECT. DES.:				DATE: 3/31/64	
MECH. DES.:				DATE: 3-31-64	
THE TECHNICAL MATERIEL CORP. MAMARONECK, NEW YORK				DATE: 3-31-64	
UNLESS OTHERWISE SPECIFIED DIMENSIONS ARE IN INCHES AND INCLUDE CHEMICALLY APPLIED OR PLATED FINISHES				DATE: 3-31-64	
DECIMALS: .X ± .05, .XX ± .01, .XXX ± .005				DATE: 3-31-64	
FRACTIONS: ± 1/64, ANGLES: ± 0° 30'				DATE: 3-31-64	
TOLERANCES:				DATE: 3-31-64	
THE CONTENTS OF THIS DRAWING ARE THE EXCLUSIVE PROPERTY OF THE TECHNICAL MATERIEL CORP. ITS UNAUTHORIZED USE OR REPRODUCTION IN WHOLE OR IN PART IS STRICTLY FORBIDDEN.				DATE: 3-31-64	
SCALE: 1:1				DATE: 3-31-64	
MODEL USED ON: LSP-3				DATE: 3-31-64	
CODE: A				DATE: 3-31-64	
ASS'Y. NO.:				DATE: 3-31-64	
TITLE: WIRING HARNESS, ASSEMBLY				DATE: 3-31-64	
DRAWN: <i>G. Sencen</i>				DATE: 3-25-64	
CHECKED: <i>H.D.</i>				DATE: 3/31/64	
ELECT. DES.:				DATE: 3/31/64	
MECH. DES.:				DATE: 3-31-64	
THE TECHNICAL MATERIEL CORP. MAMARONECK, NEW YORK				DATE: 3-31-64	
UNLESS OTHERWISE SPECIFIED DIMENSIONS ARE IN INCHES AND INCLUDE CHEMICALLY APPLIED OR PLATED FINISHES				DATE: 3-31-64	
DECIMALS: .X ± .05, .XX ± .01, .XXX ± .005				DATE: 3-31-64	
FRACTIONS: ± 1/64, ANGLES: ± 0° 30'				DATE: 3-31-64	
TOLERANCES:				DATE: 3-31-64	
THE CONTENTS OF THIS DRAWING ARE THE EXCLUSIVE PROPERTY OF THE TECHNICAL MATERIEL CORP. ITS UNAUTHORIZED USE OR REPRODUCTION IN WHOLE OR IN PART IS STRICTLY FORBIDDEN.				DATE: 3-31-64	
SCALE: 1:1				DATE: 3-31-	