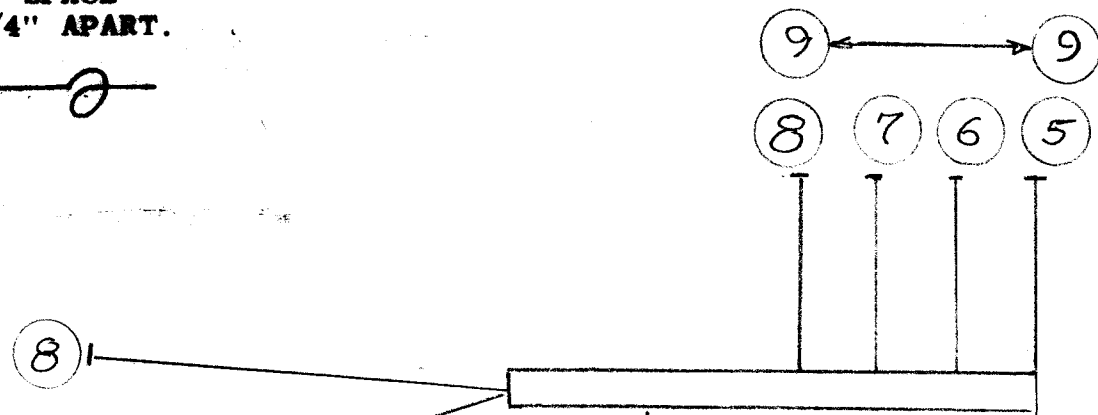
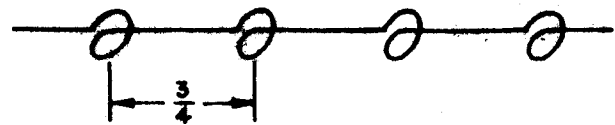
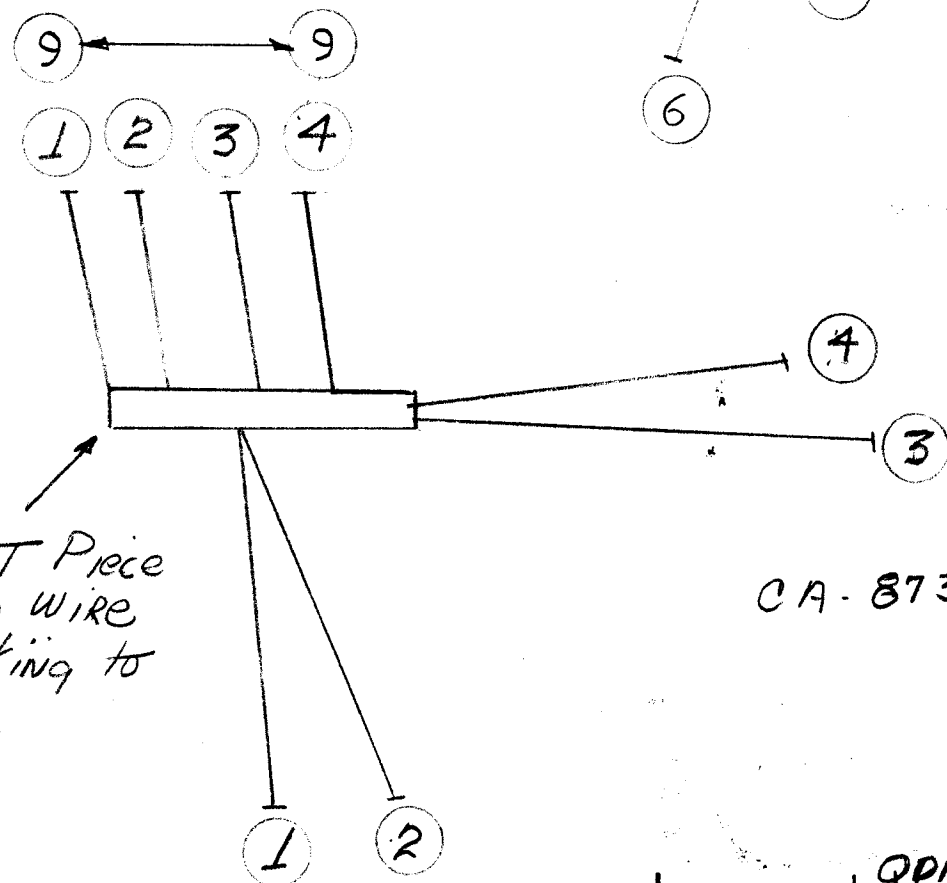


WIRES SHOULD BE PLACED IN CABLE IN NUMERICAL SEQUENCE AS THEY APPEAR IN ITEM COLUMN. SPACE LACING APPROXIMATELY 3/4" APART.



CA-873-L1



CA-873-R

Note
Use Short Piece
of SCRAP WIRE
AS BACKING TO
LACE TO.

CA-873-Ø

REVISIONS

SYM	DESCRIPTION	DATE	E.M.N. NO.	DRAFT	CHKD	APPD
Ø	ORIGINAL RELEASE FOR PRODUCTION	12.31.64	Ø	Job		

Bottom of Cable Shown
Allow 3/4" each end For Stripping

REQ'D.	ITEM	PART NUMBER	DESCRIPTION	SYMBOL
X	10	CD-101-1-MW	Cord, LACING	
	8	TE-120-R	LU9	
	8	MWC 22 (7) U-5	Cable, INSULATED	GREEN
	7	MWC 22 (7) U-95		wh/GREEN
	6	MWC-22 (7) U-R		Red
	5	MWC-22 (7) U-92		wh/Red
	4	MWC-22 (7) U-92		wh/GREEN
	3	MWC-22 (7) U-2		GREEN
	2	MWC-22 (7) U-95		wh/Red
	1	MWC-22 (7) U-5	Cable INSULATED	Red

LIST OF MATERIAL

MATERIAL		THE TECHNICAL MATERIEL CORP.			
		MARTINENGO MAMARONECK, NEW YORK			
FINISH		TITLE			
		CABLE, HARNESS			
UNLESS OTHERWISE SPECIFIED DIMENSIONS ARE IN INCHES AND INCLUDE CHEMICALLY APPLIED OR PLATED FINISHES		DRAWN	DATE	FINAL APPROVAL	
		<i>AM</i>	3-4-64	<i>RAC</i>	
		CHECKED	DATE		
		<i>AM</i>			
DECIMALS		ELECT. DES.		DATE	
.X ± .05					
.XX ± .01		MECH. DES.		DATE	
.XXX ± .005		<i>AM</i>			
FRACTIONS				SHEET	
± 1/64				CA 873-	
ANGLES				Ø	
± 0° 30'				REV. LTR	

QDP-SERIES

Q'TY./UNIT	MODEL USED ON	ASS'Y. NO.
SCALE	CODE	

THE CONTENTS OF THIS DRAWING ARE THE EXCLUSIVE PROPERTY OF THE TECHNICAL MATERIEL CORP. ITS UNAUTHORIZED USE OR REPRODUCTION IN WHOLE OR IN PART IS STRICTLY FORBIDDEN.

NOTES