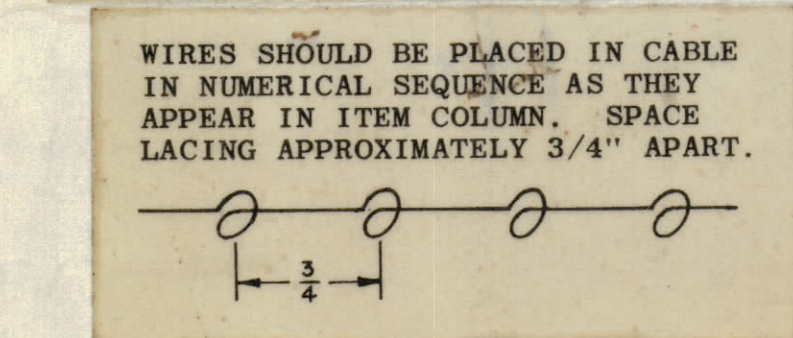
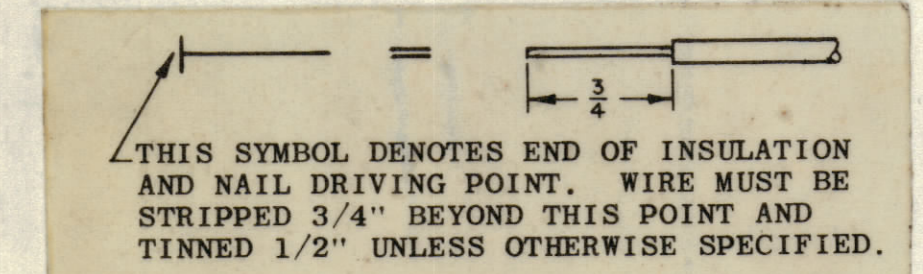
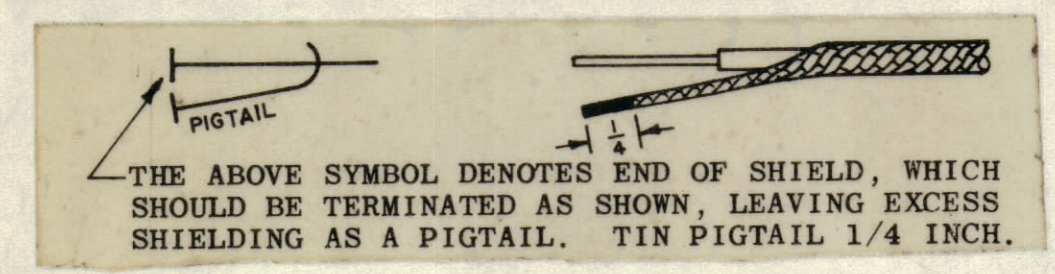
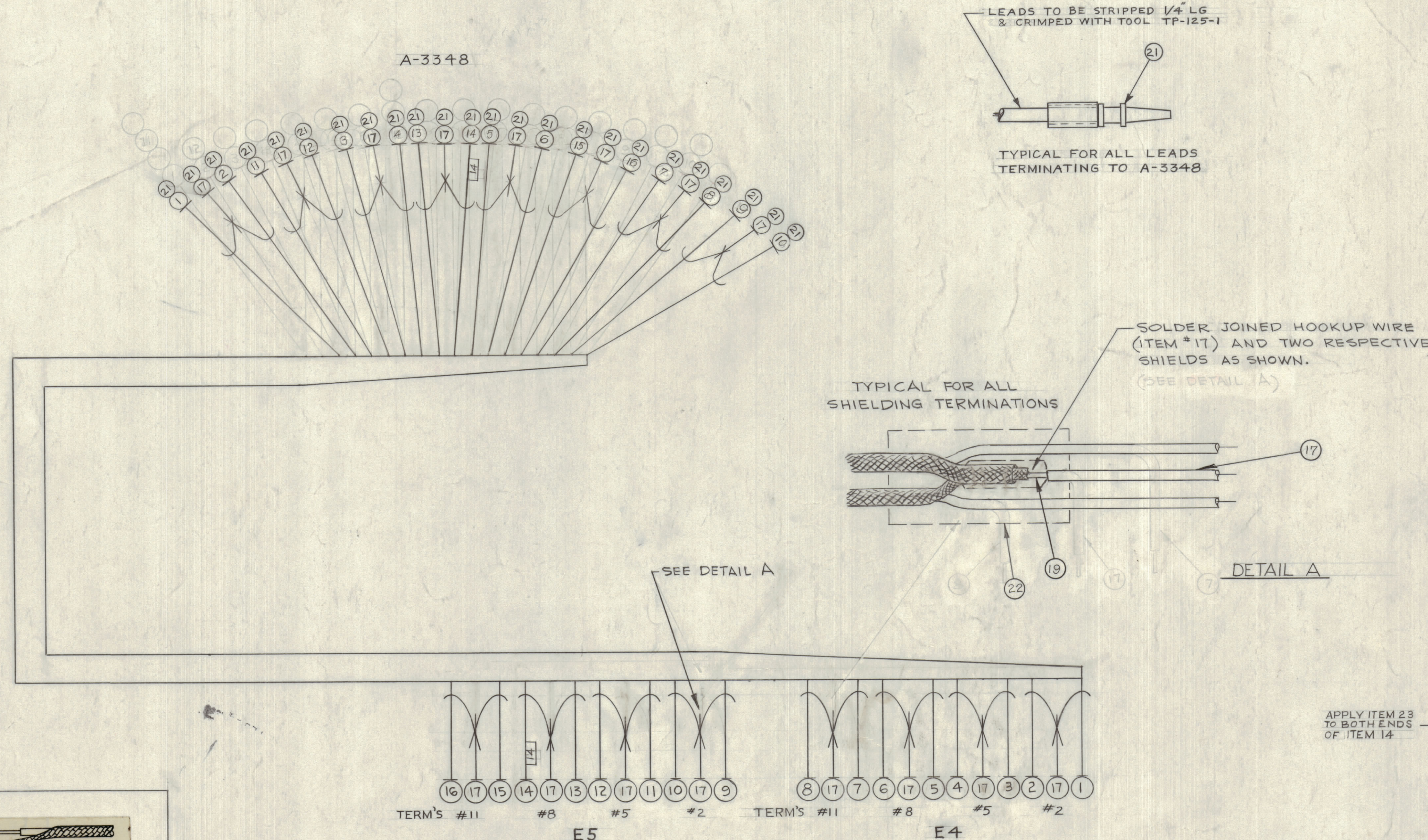
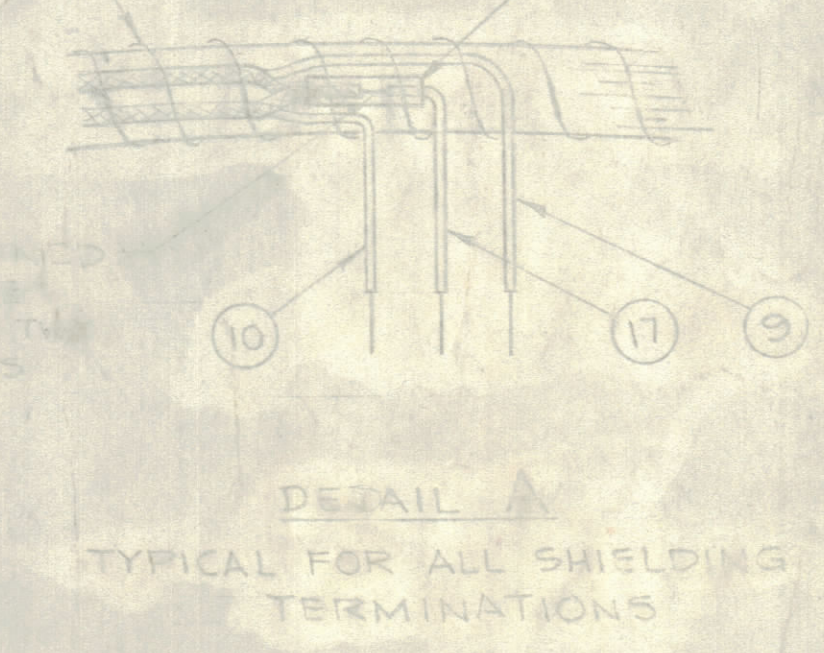


REVISIONS						
ZONE	SYM	DESCRIPTION	DATE	E.M.N. NO.	DRAFT	CHKD
	X	EXPERIMENTAL RELEASE	3/10/64	X	NP	
	XI	ITEMS 22 & 23 ADDED, DETAIL "A" RELOC. ITEM NO'S. CLARIFIED ON PICTORIAL	5-18-64	XI	A.M.	@
	O	ORIGINAL RELEASE FOR PRODUCTION	5/29/64	O	A.M.	@



□ DENOTES WIRE MARKER (ITEM 23)



REQ'D.	ITEM	PART NUMBER	FROM	TO	SYMBOL
2	23	LA 101-14	WIRE MARKER TRANSFER		
	22	PX-100-1-166	INSULATION SLEEVING, ELEC		
24	21	PL-242-1	CONNECTOR PLUG, TAPER PIN		
X	20	BS-100	SOLDER, SOFT		
X	19	PX-100-1-148	INSULATION SLEEVING, ELEC		BLK
X	18	CD-101-1-MW	CORD, LACING, NYLON, FLAT		BLK
	17	LWC 22 (7) U0	WIRE, ELECTRICAL, INSULATED		BLACK
	16	LWC 22 (7) SJ 2	A-3348	E5, TERM #12	RED
	15			#10	BROWN
	14			#9	BLACK
	13			#7	WHT/GRAY
	12			#6	WHT/VIO.
	11			#4	WHT/BLUE
	10			#3	WHT/GRN
	9			E5, TERM #1	WHT/YEL.
	8			E4, TERM #12	WHT/ORN
	7			#10	WHT/RED
	6			#9	WHT/BRN
	5			#7	WHT/BLK
	4			#6	WHITE
	3			#4	BLACK
	2			#3	VIOLET
	1	LWC 22 (7) SJ 6	A-3348	E4, TERM #1	BLUE

LIST OF MATERIAL			
MATERIAL	FINISH	TITLE	SYMBOL
///	///	THE TECHNICAL MATERIEL CORP. MAMARONECK, NEW YORK	
		WIRING HARNESS, BRANCHED	

1	LPP-4	ASS'Y. NO.
SCALE	CODE	
	A	

UNLESS OTHERWISE SPECIFIED DIMENSIONS ARE IN INCHES AND INCLUDE CHEMICALLY APPLIED OR PLATED FINISHES

DECIMALS: X ± .05, XX ± .01, XXX ± .005

TOLERANCES: FRACTIONS ± 1/64, ANGLES ± 0' 30"

THE CONTENTS OF THIS DRAWING ARE THE EXCLUSIVE PROPERTY OF THE TECHNICAL MATERIEL CORP. ITS UNAUTHORIZED USE OR REPRODUCTION IN WHOLE OR IN PART IS STRICTLY FORBIDDEN.

DRAWN: MY, DATE: 12-9-63, FINAL APPROVAL: KJL, DATE: 5-20-64

CHECKED: [Signature], DATE: 5-21-64

ELECT. DES. [Signature], MECH. DES. [Signature], DATE: 5-21-64

CA-856

CA-856