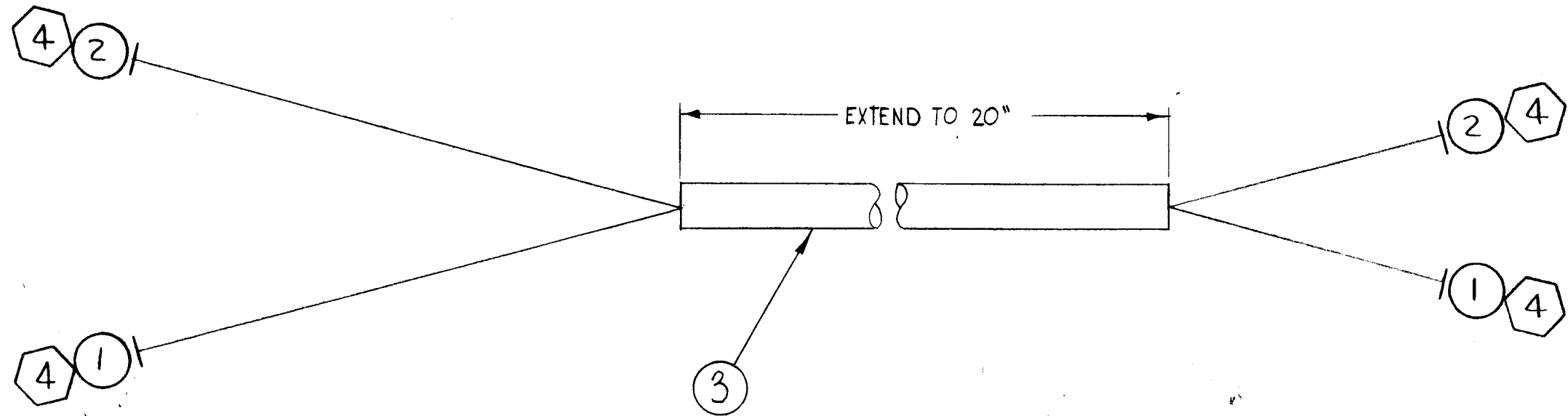


CA-830 B

REVISIONS

SYM	DESCRIPTION	DATE	E.M.N. NO.	DRAFT	CHKD	APPD
O	ORIGINAL RELEASE FOR PRODUCTION	5-4-64		SRG		
A	SHORTENED ALL LEADS 2" ON BOTH ENDS.	2/17/66	16760	JL	OCB	
B	QTY ITEM 3 WAS 2' 6"	9/25/66	17050	LPH	OCB	



~SYMBOL DENOTES~

- 1 ITEM NOS.
- 4 LUGS

X	5	BS-100	SOLDER, SOFT	
4	4	TE-155-34171	TERMINAL, LUG, 1/4-20	
1'-8"	3	PX-100-1-330	SLEEVING, INSULATION	BLACK
2'-6"	2	HWC14(19)B92	CABLE, INSULATED FIBERGLASS	WH/RED
2'-6"	1	HWC14(19)B9	CABLE, INSULATED FIBERGLASS	WHITE

REQ'D.	ITEM	PART NUMBER	DESCRIPTION	SYMBOL
F. BUDETTI LIST OF MATERIAL				
MATERIAL			THE TECHNICAL MATERIEL CORP. MAMARONECK, NEW YORK	
FINISH			TITLE CABLE ASS'Y, JUMPER	
UNLESS OTHERWISE SPECIFIED DIMENSIONS ARE IN INCHES AND INCLUDE CHEMICALLY APPLIED OR PLATED FINISHES			DRAWN W.A. FRANCO	DATE 2-8-64
			CHECKED OCB	DATE
DECIMALS .X ± .05 .XX ± .01 .XXX ± .005			ELECT. DES. OCB	
			MECH. DES. OCB	
TOLERANCES ± 1/64 ANGLES ± 0° 30'			FINAL APPROVAL RJC	
			DATE	
THE CONTENTS OF THIS DRAWING ARE THE EXCLUSIVE PROPERTY OF THE TECHNICAL MATERIEL CORP. ITS UNAUTHORIZED USE OR REPRODUCTION IN WHOLE OR IN PART IS STRICTLY FORBIDDEN.			CA-830	
			B	
			SHEET	
			REV. LTR.	

THIS SYMBOL DENOTES END OF INSULATION AND NAIL DRIVING POINT. WIRE MUST BE STRIPPED 3/4" BEYOND THIS POINT AND TINNED 1/2" UNLESS OTHERWISE SPECIFIED.

NOTES

1	GPT-10K()7(Ax505)	
Q'TY./UNIT	MODEL USED ON	ASS'Y. NO.
SCALE #	CODE A	