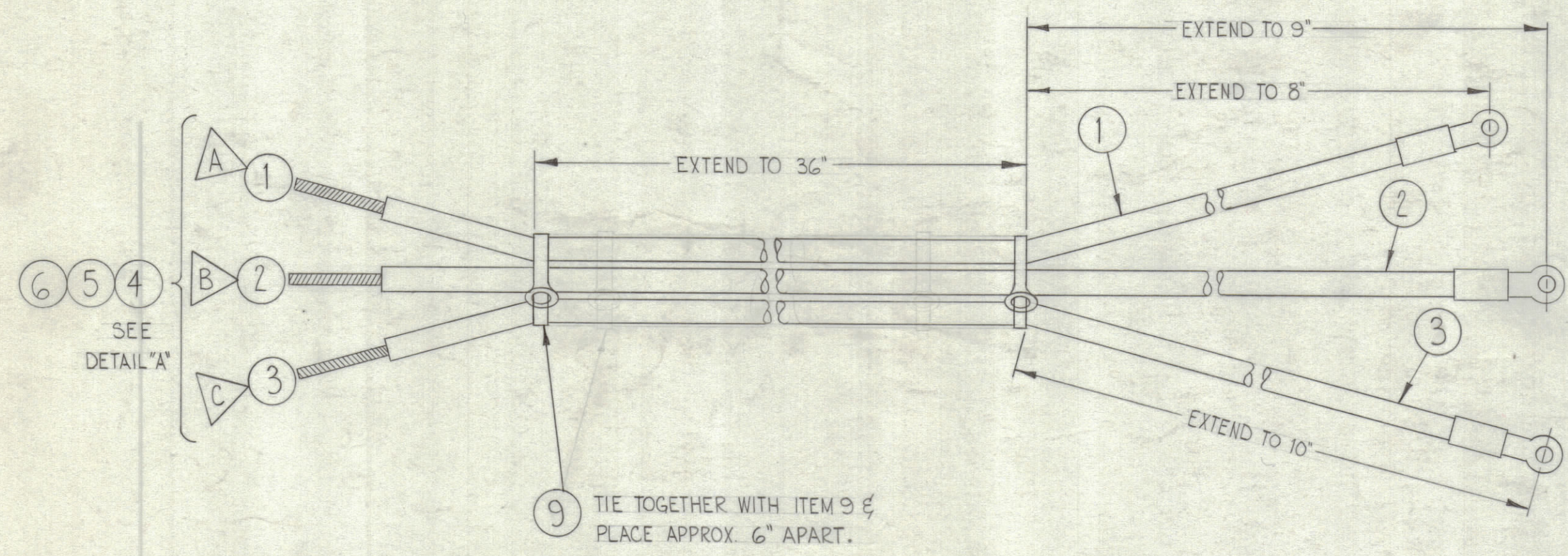
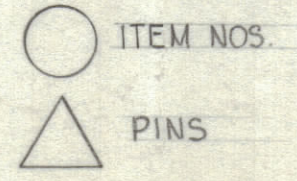


REVISIONS						
ZONE	SYM	DESCRIPTION	DATE	E.M.N. NO.	DRAFT	CHKD
	A	REDRAWN & REVISED.				
	O	ORIGINAL RELEASE FOR PROD	5/11/64			
-	A	CLERICAL CHANGE	9.3.64	+	MS	MP



~SYMBOL DENOTES~



REQ'D.	ITEM	PART NUMBER	DESCRIPTION	SYMBOL
	9	CU-142-1-0	STRAP, CABLE, ADJUSTABLE PLASTIC	BLACK
	8	BS-100	SOLDER, SOFT	
	7	PX-100-1- 438	SLEEVING, INSULATION	BLACK
1	6	MS3420-20A	BUSHING, CABLE	
1	5	MS3057-20	CLAMP, CABLE	
1	4	MS3106B32-175	CONNECTOR, RECEPTACLE	
1	3	CA-793-4-4-0	CABLE ASS'Y, JUMPER	
1	2	CA-793-2-3-11	CABLE ASS'Y, JUMPER	
1	1	CA-793-21-3-10	CABLE ASS'Y, JUMPER	

F. BUDETTI		LIST OF MATERIAL	
MATERIAL		THE TECHNICAL MATERIEL CORP. MAMARONECK, NEW YORK	
FINISH		TITLE BLOWER DELAY INPUT, POWER CABLE	
UNLESS OTHERWISE SPECIFIED DIMENSIONS ARE IN INCHES AND INCLUDE CHEMICALLY APPLIED OR PLATED FINISHES	DRAWN W.A. FRANCO	DATE 9-5-63	FINAL APPROVAL <i>[Signature]</i>
DECIMALS .X ± .05 .XX ± .01 .XXX ± .005	CHECKED aa	DATE 1/22/64	DATE 2-14-64
TOLERANCES	ELECT. DES. MS	DATE 2-14-64	DATE
FRACTIONS ± 1/64 ANGLES ± 0° 30'	MECH. DES. SD		
NOTES		CA-811	A
THE CONTENTS OF THIS DRAWING ARE THE EXCLUSIVE PROPERTY OF THE TECHNICAL MATERIEL CORP. ITS UNAUTHORIZED USE OR REPRODUCTION IN WHOLE OR IN PART IS STRICTLY FORBIDDEN.		SHEET	REV. LTR.

CA-811
A