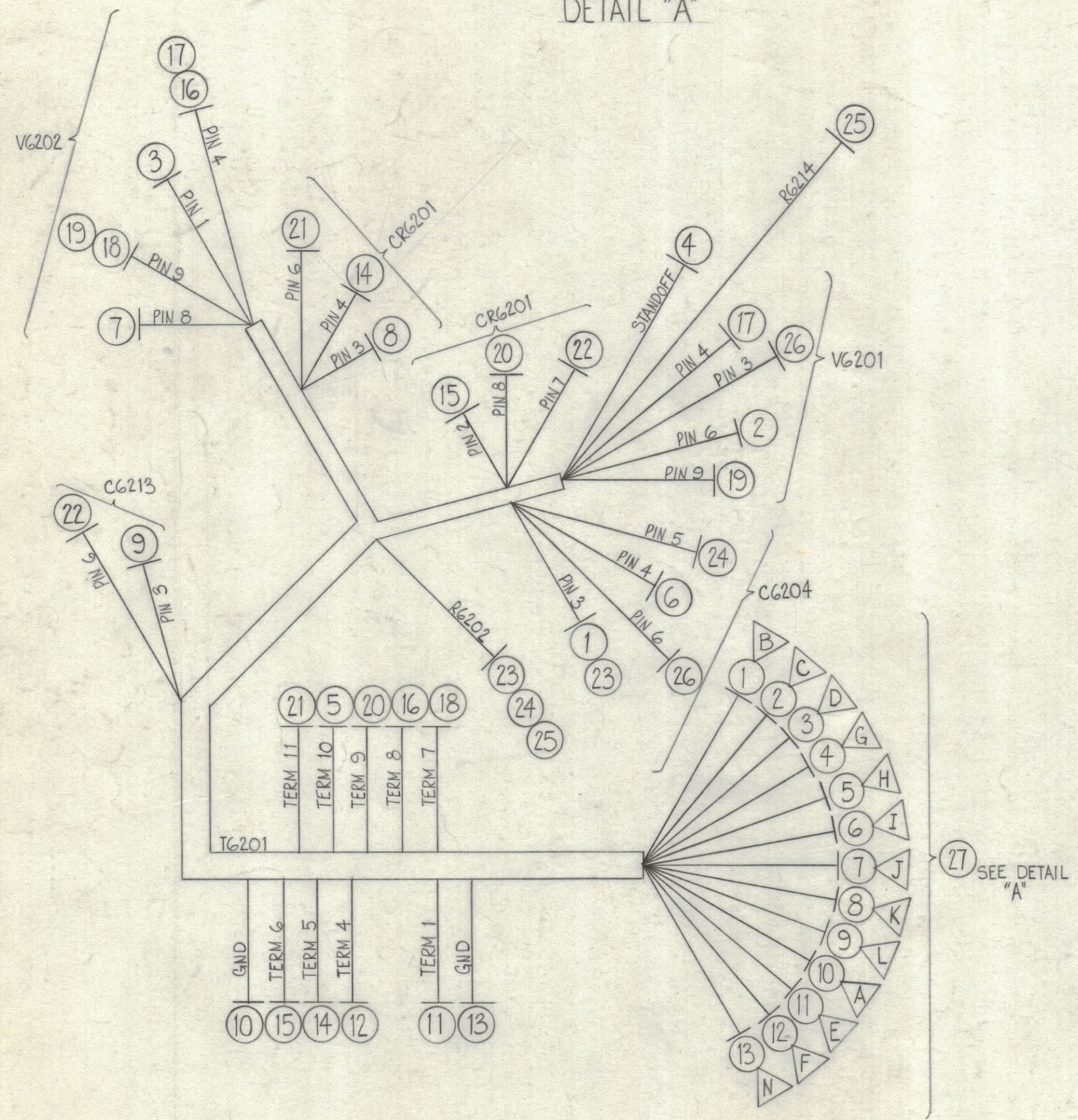
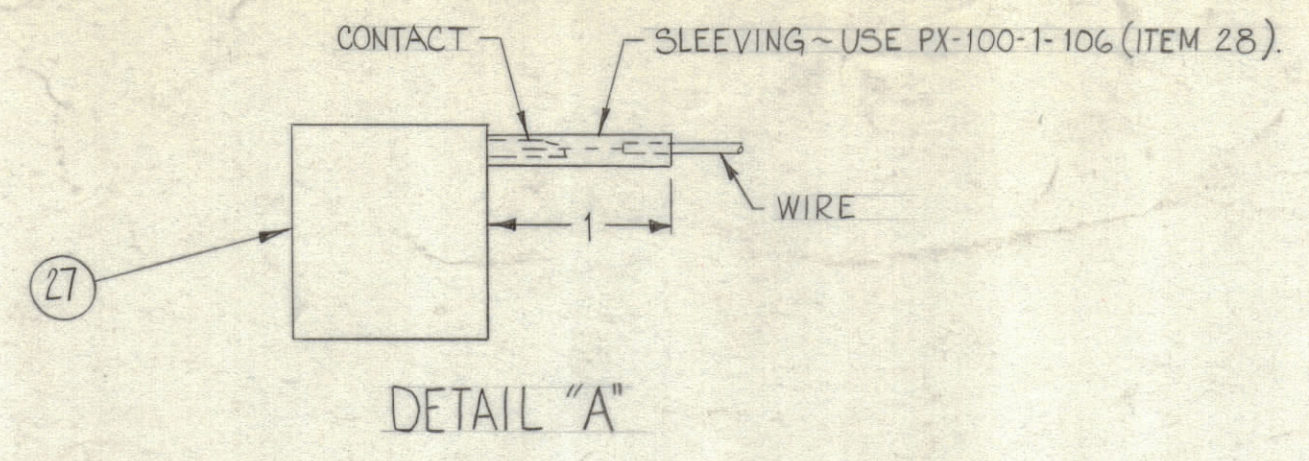
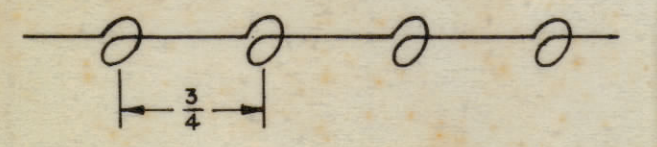


REVISIONS						
ZONE	SYM	DESCRIPTION	DATE	E.M.N. NO.	DRAFT	CHKD
	0	ORIGINAL RELEASE FOR PRODUCTION	3-2-64			A.M.

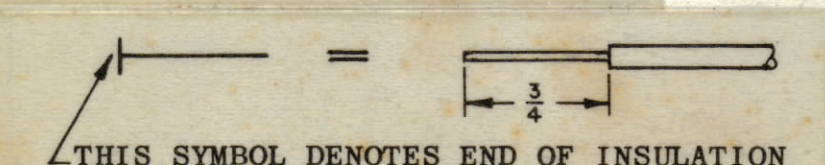


REQ'D.	ITEM	PART NUMBER	DESCRIPTION	SYMBOL
	30	BS-100	SOLDER, SOFT	
	29	CD-101-1-MW	CORD LACING	BLACK
	28	PX-100-1-106	SLEEVING, INSULATION	BLACK
1	27	MS3102A20-27P	CONNECTOR, PLUG (MALE)	J6201
	26	WI-140EE22E95	WIRE, ELECTRICAL	WH/GRN
	25			RED
	24			WH/ORN
	23			RED
	22			VIOLET
	21			WH/GRAY
	20			WH/VIO
	19			WH/BLU
	18			WH/BLU
	17			WH/YEL
	16			WH/YEL
	15			WH/BRN
	14			WHITE
	13	WI-140EE22E91		WH/BRN
	12	WI-140EE20E6		BLUE
	11	WI-140EE20E8		GRAY
	10	WI-140EE22E4		YELLOW
	9			WH/BLK
	8			BLACK
	7			WH/GRN
	6			GREEN
	5			BROWN
	4			ORANGE
	3			WH/ORN
	2			WH/RED
	1	WI-140EE22E2	WIRE, ELECTRICAL	RED

WIRES SHOULD BE PLACED IN CABLE IN NUMERICAL SEQUENCE AS THEY APPEAR IN ITEM COLUMN. SPACE LACING APPROXIMATELY 3/4" APART.



THIS SYMBOL DENOTES END OF INSULATION AND NAIL DRIVING POINT. WIRE MUST BE STRIPPED 3/4" BEYOND THIS POINT AND TINNED 1/2" UNLESS OTHERWISE SPECIFIED.



NOTES

1	GPT-200K	AZ-101
Q'TY./UNIT	MODEL USED ON	ASS'Y. NO.
SCALE 1:1	CODE A	
THE CONTENTS OF THIS DRAWING ARE THE EXCLUSIVE PROPERTY OF THE TECHNICAL MATERIEL CORP. ITS UNAUTHORIZED USE OR REPRODUCTION IN WHOLE OR IN PART IS STRICTLY FORBIDDEN.		

F. BUDETTI		LIST OF MATERIAL	
MATERIAL		THE TECHNICAL MATERIEL CORP. MAMARONECK, NEW YORK	
FINISH		TITLE WIRING HARNESS BRANCHED (MAIN DC AMPLIFIER)	
UNLESS OTHERWISE SPECIFIED - DIMENSIONS ARE IN INCHES AND INCLUDE CHEMICALLY APPLIED OR PLATED FINISHES		DRAWN: W.A. FRANCO CHECKED: W.F. ELECT. DES. 28 AB MECH. DES. 20	DATE: 2-13-64 DATE: 2-13-64 DATE: 2-13-64 DATE: 2-13-64
TOLERANCES X ± .05 .XX ± .01 .XXX ± .005		FINAL APPROVAL: [Signature] CA-754 SHEET: [ ] REV. LTR. 0	