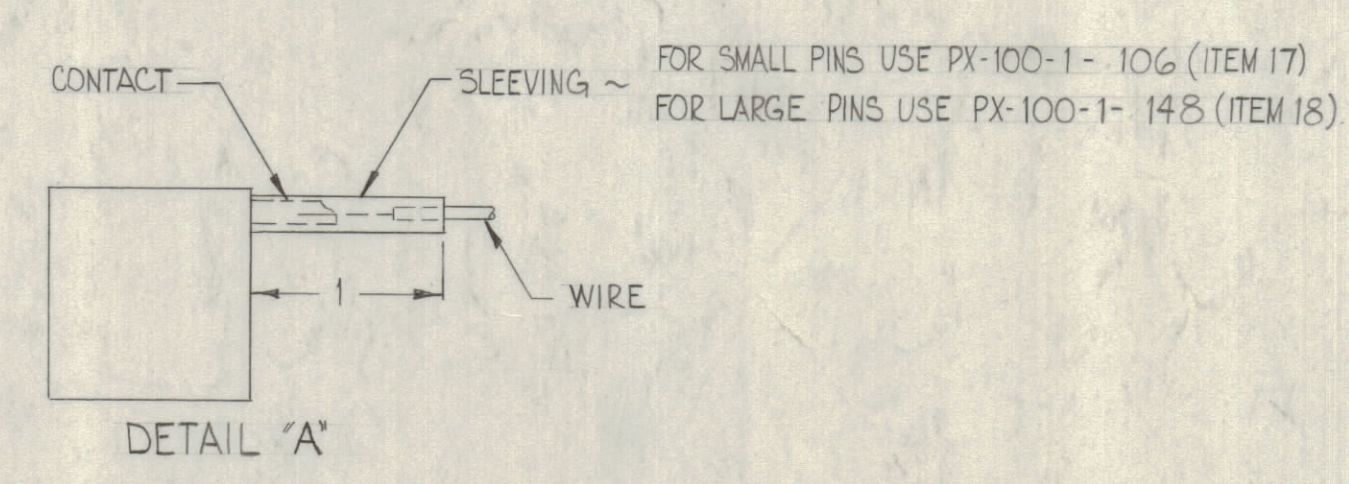
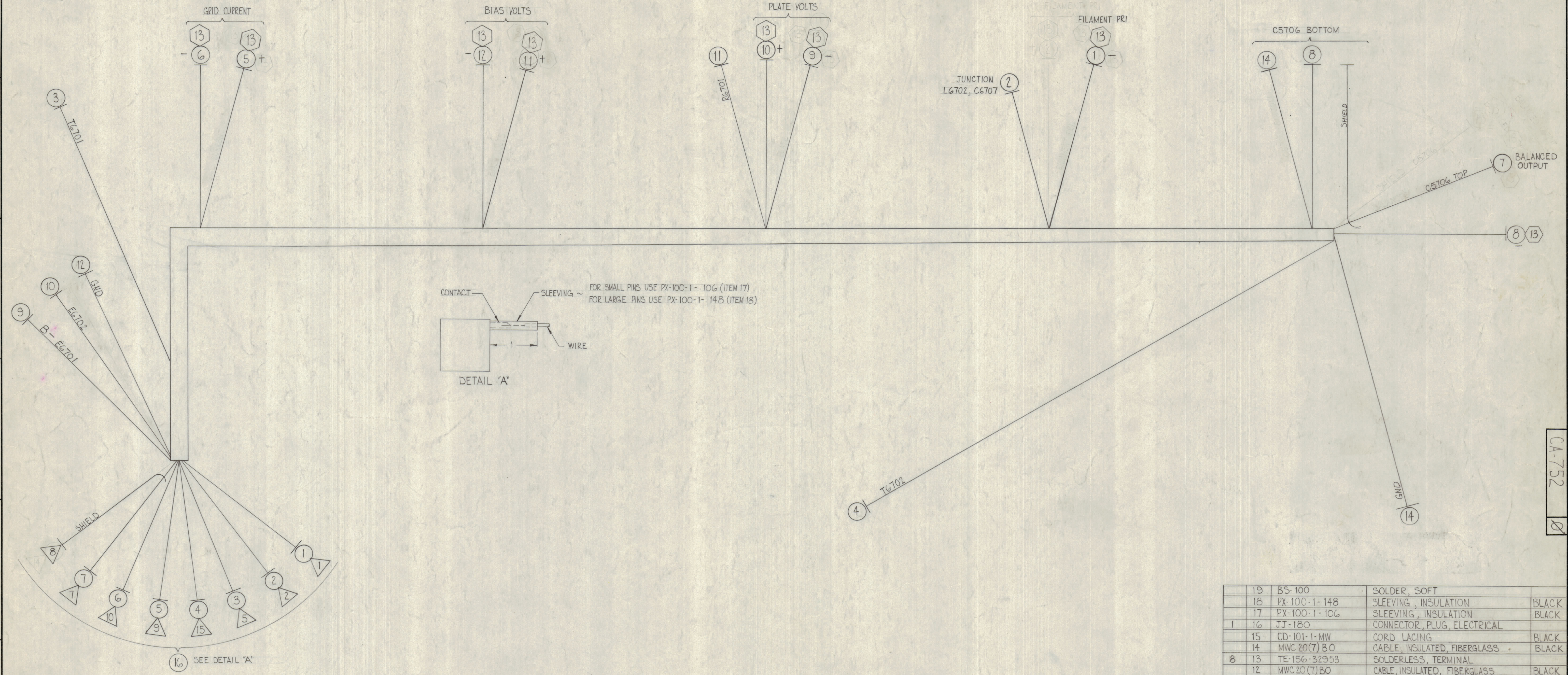


REVISIONS					
ZONE	SYM	DESCRIPTION	DATE	E.M.N. NO.	APPRO
0		ORIGINAL RELEASE FOR PRODUCTION	5.16.64		WRE



REQ'D.	ITEM	PART NUMBER	DESCRIPTION	SYMBOL
	19	BS-100	SOLDER, SOFT	
	18	PX-100-1-148	SLEEVING, INSULATION	BLACK
	17	PX-100-1-106	SLEEVING, INSULATION	BLACK
1	16	JJ-180	CONNECTOR, PLUG, ELECTRICAL	
	15	CD-101-1-MW	CORD LACING	BLACK
	14	MWC 20(7) B0	CABLE, INSULATED, FIBERGLASS	BLACK
8	13	TE-156-32953	SOLDERLESS, TERMINAL	
	12	MWC 20(7) B0	CABLE, INSULATED, FIBERGLASS	BLACK
	11	MWC 20(7) B2	CABLE, INSULATED, FIBERGLASS	RED
	10	WI-140EE18E90	WIRE, ELECTRICAL	WH/BLK
	9	WI-140EE18E0	WIRE, ELECTRICAL	BLACK
	8	MWC 20(7) B0	CABLE, INSULATED FIBERGLASS	BLACK
	7	RG-188/U	CABLE, COAXIAL	
	6	MWC 20(7) B 5	CABLE, INSULATED FIBERGLASS	GREEN
	5	↑ ↑ 93	↑ ↑	WH/ORN
	4	↑ ↑ 3	↑ ↑	ORANGE
	3	↑ ↑ 9	↑ ↑	WHITE
	2	↓ ↓ 95	↓ ↓	WH/GRN
1	1	MWC 20(7) B 8	CABLE, INSULATED, FIBERGLASS	GRAY

THIS SYMBOL DENOTES END OF INSULATION & NAIL DRIVING POINT. WIRE MUST BE STRIPPED 3/4" BEYOND THIS POINT & TINNED 1/2" UNLESS OTHERWISE SPECIFIED.

THIS EQUALS THIS

WIRES SHOULD BE PLACED IN CABLE IN NUMERICAL SEQUENCE AS THEY APPEAR IN ITEM COLUMN. SPACE LACING APPROX. 3/4" APART.

~ SYMBOL DENOTES ~

- ITEM NOS
- ⬡ LUGS
- △ PINS

NOTES

1	GPT-200K	AM-120
SCALE	MODEL USED ON	ASSY. NO.

UNLESS OTHERWISE SPECIFIED DIMENSIONS ARE IN INCHES AND INCLUDE CHEMICALLY APPLIED OR PLATED FINISHES				DRAWN W.A. FRANCO DATE 4-17-63		FINAL APPROVAL	
DECIMALS .3 ± .05 .XX ± .01 .XXX ± .005				CHECKED W.F. DATE 2-7-64		DATE	
FRACTIONS ± 1/64 ANGLES ± 0° 30'				ELECT. DES. DATE		MECH. DES. DATE	
THE CONTENTS OF THIS DRAWING ARE THE EXCLUSIVE PROPERTY OF THE TECHNICAL MATERIEL CORP. ITS UNAUTHORIZED USE OR REPRODUCTION IN WHOLE OR IN PART IS STRICTLY FORBIDDEN.				DATE 2-7-64		SHEET	

CA-752