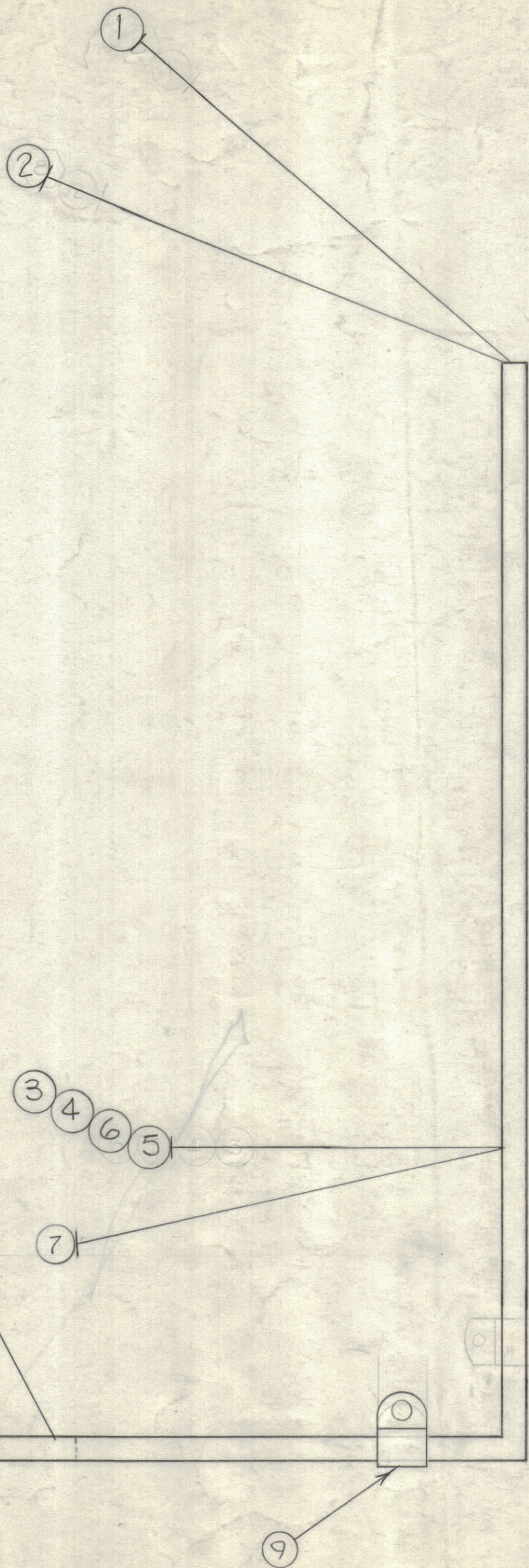


NOTICE TO PERSONS RECEIVING THIS DRAWING

THE TECHNICAL MATERIEL CORPORATION claims proprietary right in the material disclosed herein. This drawing is issued in confidence for engineering information only and may not be reproduced or used to manufacture anything shown herein without permission from THE TECHNICAL MATERIEL CORPORATION to the user. This drawing is loaned for mutual assistance and is subject to recall at any time.

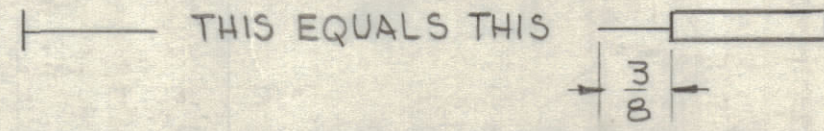
Property of:  
THE TECHNICAL MATERIEL CORPORATION  
MAMARONECK, NEW YORK

REVISIONS						
ZONE	SYM	DESCRIPTION	DATE	E.M.N. NO.	DRAFT	CHKD
C2	A	ITEM (9) ADDED	1-15-63	8010		
C2	B	ITEM (8) WAS TE-156-32947, 2 REQ. LEAD LENGTHS INCR. ITEM 10 ADDED	2-8-63	8185		
C2	C	ITEM (11) ADDED	4-18-63	8830		
B4	D	ITEM (9) WAS CU-102-2	7-24-63	9601		
	E	ITEM 9 RELOCATED, ADD IT. 12	3-15-67	17938		



- SYMBOL NOTES —
- DENOTES ITEM NO'S.
  - ⬡ DENOTES LUGS
  - DENOTES TAGS (ITEM 10)

THIS SYMBOL END OF INSULATION & NAIL DRIVING POINT. WIRE MUST BE STRIPPED 1/2" BEYOND THIS POINT & TINNED 3/8" UNLESS OTHERWISE SPECIFIED.



X	12	BS100	SOLDER, TIN ALLOY	
X	11	CD-101-1-MW	CORD, LACING	
1	10	LA-101	MARKER, WIRE	
1	9	CU-102-3	CLAMP, "G" TYPE	
—	8	DELETED		
	7	MWC 20(7)UG	K1 PIN 8 TO JUNCTION CR12 & CR14 (PS BOARD)	BLUE
	6	U98	T4 PIN 11 TO DS2 (POWER LIGHT)	WH/GREY
	5	U98	T4 PIN 9 TO DS2 (POWER LIGHT)	WH/GREY
	4	U91	F1 (FUSE) TO T4 PIN 7	WH/BROWN
	3	U1	S5 (POWER) ON TO T4 PIN 2	BROWN
	2	U1	J4 POWER SOCKET TO S5 (POWER) OFF	BROWN
	1	MWC 20(7) U1	J4 POWER SOCKET TO S5 (POWER) OFF	BROWN

LIST OF MATERIAL				
MATERIAL	THE TECHNICAL MATERIEL CORP. MAMARONECK, NEW YORK			
FINISH	TITLE CABLE, ELECTRICAL,			
QTY./UNIT	MODEL USED ON	ASS'Y. NO.	DRAWN	DATE
SCALE	CODE		DATE	DATE
UNLESS OTHERWISE SPECIFIED DIMENSIONS ARE IN INCHES AND INCLUDE CHEMICALLY APPLIED OR PLATED FINISHES			DATE	DATE
DECIMALS	TOLERANCES	FRACTIONS	DATE	DATE
.X ± .05		± 1/64	DATE	DATE
.XX ± .01		ANGLES	DATE	DATE
.XXX ± .005		± 0° 30'	DATE	DATE

NOTES

THE CONTENTS OF THIS DRAWING ARE THE EXCLUSIVE PROPERTY OF THE TECHNICAL MATERIEL CORP. ITS UNAUTHORIZED USE OR REPRODUCTION IN WHOLE OR IN PART IS STRICTLY FORBIDDEN.

CA-726

11-30-62

11-30-62

CA-726

SHEET