

**NOTICE TO PERSONS RECEIVING THIS DRAWING**  
 THE TECHNICAL MATERIEL CORPORATION claims proprietary right in the material disclosed hereon. This drawing is issued in confidence for engineering information only and may not be reproduced or used to manufacture anything shown hereon without permission from THE TECHNICAL MATERIEL CORPORATION to the user. This drawing is loaned for mutual assistance and is subject to recall at any time.  
 Property of:  
 THE TECHNICAL MATERIEL CORPORATION  
 MAMARONECK, NEW YORK

43	LA107-14-CA704	SLEEVE, MARKER, CABLE	
42	-14-P8010		
41	-14-P8007		
40	-15-P3001		
39	-18-P1305		
38	LA107-18-CA704	SLEEVE, MARKER, CABLE	
37	PX100-1-375	INSULATION, SLEEVING, SZ 3/8	BLK
36	PX100-1-133	INSULATION, SLEEVING, SZ 8	BLK
35	PX100-1-625	INSULATION, SLEEVING, SZ 5/8	BLK

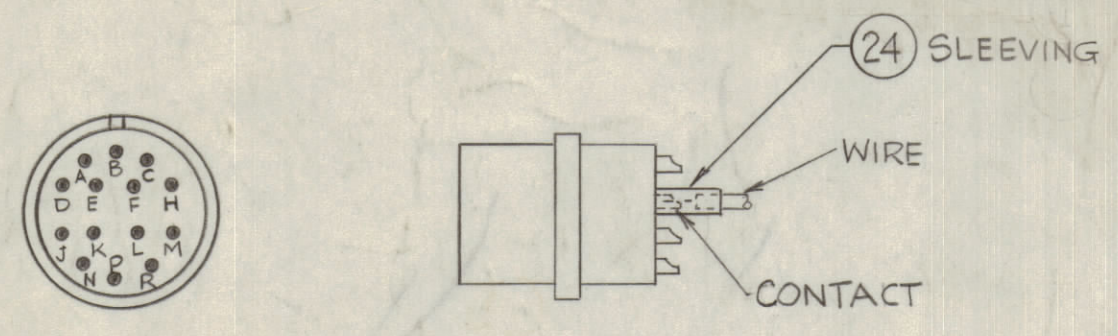
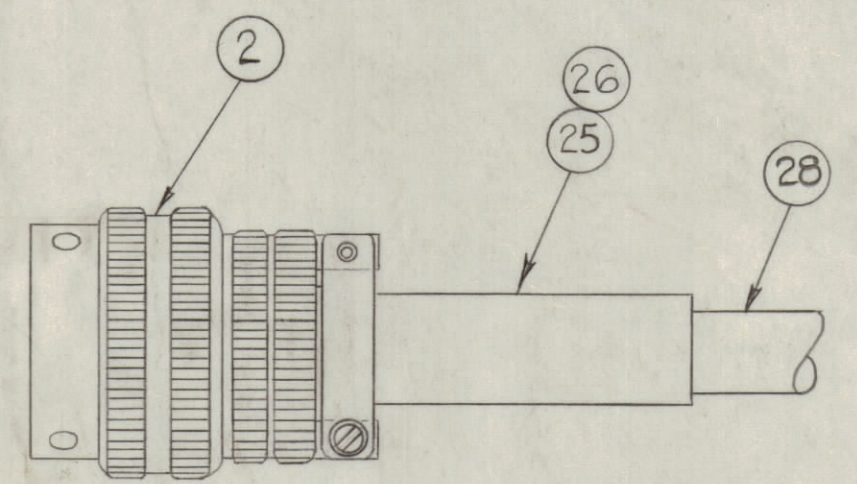
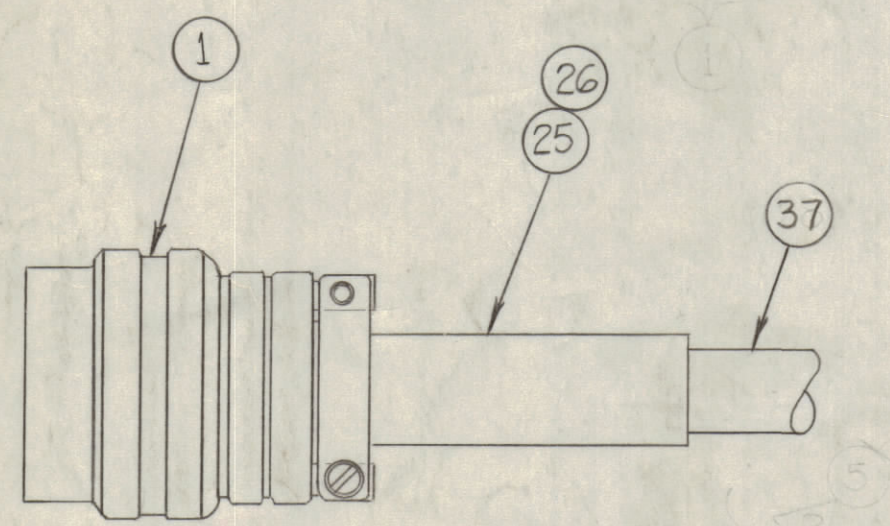
**LEGEND**  
 ○ DENOTES ITEM NO.  
 △ DENOTES PIN CONNECTION

SEE WIRING DETAIL FOR ITEM ①

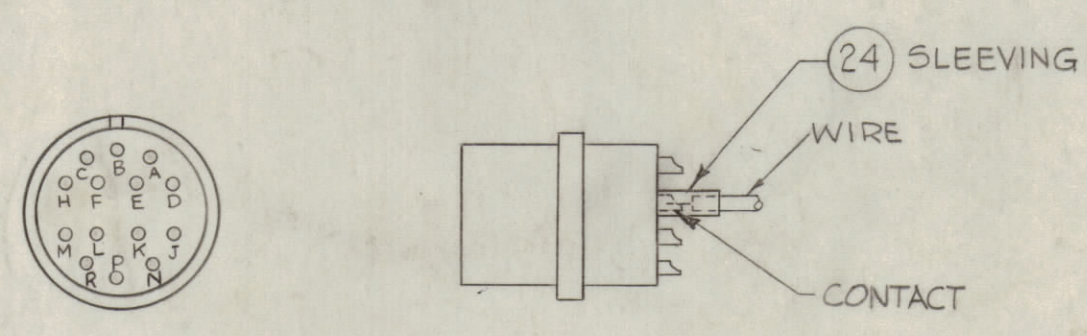
NOTE: TERMINATE SHIELD FOR ITEM ② & ② AT PIN △

SEE WIRING DETAIL FOR ITEM ②

NOTE: TERMINATE SHIELD FOR ITEM ② & ② AT PIN △



NOTE: USE SLEEVING (ITEM 24) FOR CONNECTIONS TO CONTACTS A, B, C, D, E, F, H, J, K, L, M, P, R



NOTE: USE SLEEVING (ITEM 24) FOR CONNECTIONS TO CONTACTS A, B, C, D, E, F, H, J, K, L, M, N, P, R

THIS SYMBOL DENOTES END OF INSULATION & NAIL DRIVING POINT. WIRE MUST BE STRIPPED 1/2" BEYOND THIS POINT & TINNED 3/8" UNLESS OTHERWISE SPECIFIED.

THIS EQUALS THIS

WIRES SHOULD BE PLACED IN CABLE IN NUMERICAL SEQUENCE AS THEY APPEAR IN ITEM COLUMN, SPACE LACING APPROX. 3/4" APART.

END OF SHIELD = TIN

ABOVE SYMBOL DENOTES PIGTAIL SHIELD.

34	MWC 16 (19) U91	CABLE, INSULATED	WH/BRN
33	MWC 16 (19) U1	CABLE, INSULATED	BROWN
32	MWC 16 (19) U91	CABLE, INSULATED	WH/BRN
31	MWC 16 (19) U91	CABLE, INSULATED	WH/BRN
30	MWC 16 (19) U1	CABLE, INSULATED	BROWN
29	MWC 16 (19) U1	CABLE, INSULATED	BROWN
28	PX-100-1-438	INSULATION, SLEEVING, SZ 7/16	BLACK
27	CD-101-1-MW	CORD LACING	BLACK
4 26	MS-3420-12A	BUSHING, CABLE, ADAPTER, TELESCOPING	BLACK
4 25	MS-3420-8A	BUSHING, CABLE, ADAPTER, TELESCOPING	BLACK
36" 24	PX100-1-095	INSULATION SLEEVING	BLACK
1 23	TE-159-32957	TERMINAL, SOLDERLESS	
22	MWC 22 (7) SJ35	CABLE, INSULATED, SHIELDED	GREEN
21	MWC 22 (7) U0	CABLE, INSULATED	BLACK
20	MWC 22 (7) SJ4	CABLE, INSULATED, SHIELDED	YELLOW
19	MWC 22 (7) U7	CABLE, INSULATED	VIOLET
18	MWC 22 (7) U2		RED
17	MWC 16 (19) U1		BROWN
16	MWC 16 (19) U91		WH/BRN
15	MWC 18 (16) U8		GRAY
14	MWC 18 (16) U98		WH/GRAY
13	MWC 22 (7) U93		WH/ORNG
12	MWC 22 (7) U6		BLUE
11	MWC 22 (7) U6		BLUE
10	MWC 22 (7) U2		RED
9	MWC 22 (7) U96		WH/BLU
8	MWC 16 (19) U1		BROWN
7	MWC 16 (19) U0		BLACK
6	MWC 16 (19) U96		WH/BLU
5	MWC 22 (7) U3		ORANGE
4	MWC 18 (16) U9		WHITE
3	MWC 22 (7) U90	CABLE, INSULATED	WH/BLK
2 2	PL-212-2	CONNECTOR, RECEPTACLE FEMALE	
2 1	PL-212-1	CONNECTOR, RECEPTACLE MALE	

E	21.38 THRU 43 ADD. IT 24 WAS MWC 22 (7) SJ4, IT 22 WAS MWC 22 (7) SJ4	5.6-65	13906	02	006	07
D	IT. 35, 36, 37 CALLOUTS ADDED	7.21.64	11907	02	006	07
C	IT. 28 WAS PX100-1, ITEMS 35, 36, 37 ADD.					
B	ITEMS 28 AND 9 PLACES BY MWC 16 (19) U91 WAS MWC 16 (19) U91	4/26/63	10334	02	006	07
A	ITEMS (33) & (34) ADDED TO CABLE (ERRA)	10-11-62	7422	02	006	07
	ITEMS (35) & (34) ADDED					
	ITEM (19) WAS MWC 16 (19) U96 QUANTITIES ADDED TO 20 & 100	9-21-62	7395	02	006	07
	ITEM (6) WAS MWC 18 (16) U98 QUANTITIES ADDED TO 20 & 100					

UNLESS OTHERWISE SPECIFIED:  
 DIMENSIONS ARE IN INCHES  
 TOLERANCES ON FRACTIONS ± 1/64 DECIMALS ± .005 ANGLES ± 1/2°  
 SCALE: MAXIMUM ALLOWABLE TOLERANCES HAVE BEEN DETERMINED AND ANY DEVIATIONS WILL BE CAUSE FOR REJECTION. REMOVE ALL BURRS & SHARP EDGES

2	RAK-22A(1)			5-11-62	
REQ. PER UNIT	MODEL	SECTION	ASSY. NO.	DATE	

REQ. ITEM	PART NO.	R. KOHN	DESCRIPTION	SYMBOL
THE TECHNICAL MATERIEL CORP. MAMARONECK, NEW YORK				
CABLE, SPECIAL PURPOSE ELECTRICAL				
V.R.R. <i>Hue</i> <i>PK</i>				
DRAWN CHECKED FINAL APPROVAL				
R. Kohn <i>PK</i> CA-704				
FINISH & SPEC. NO. ELEC. DES. APP. MECH. DES. APP. SHEET OF				

CA-704