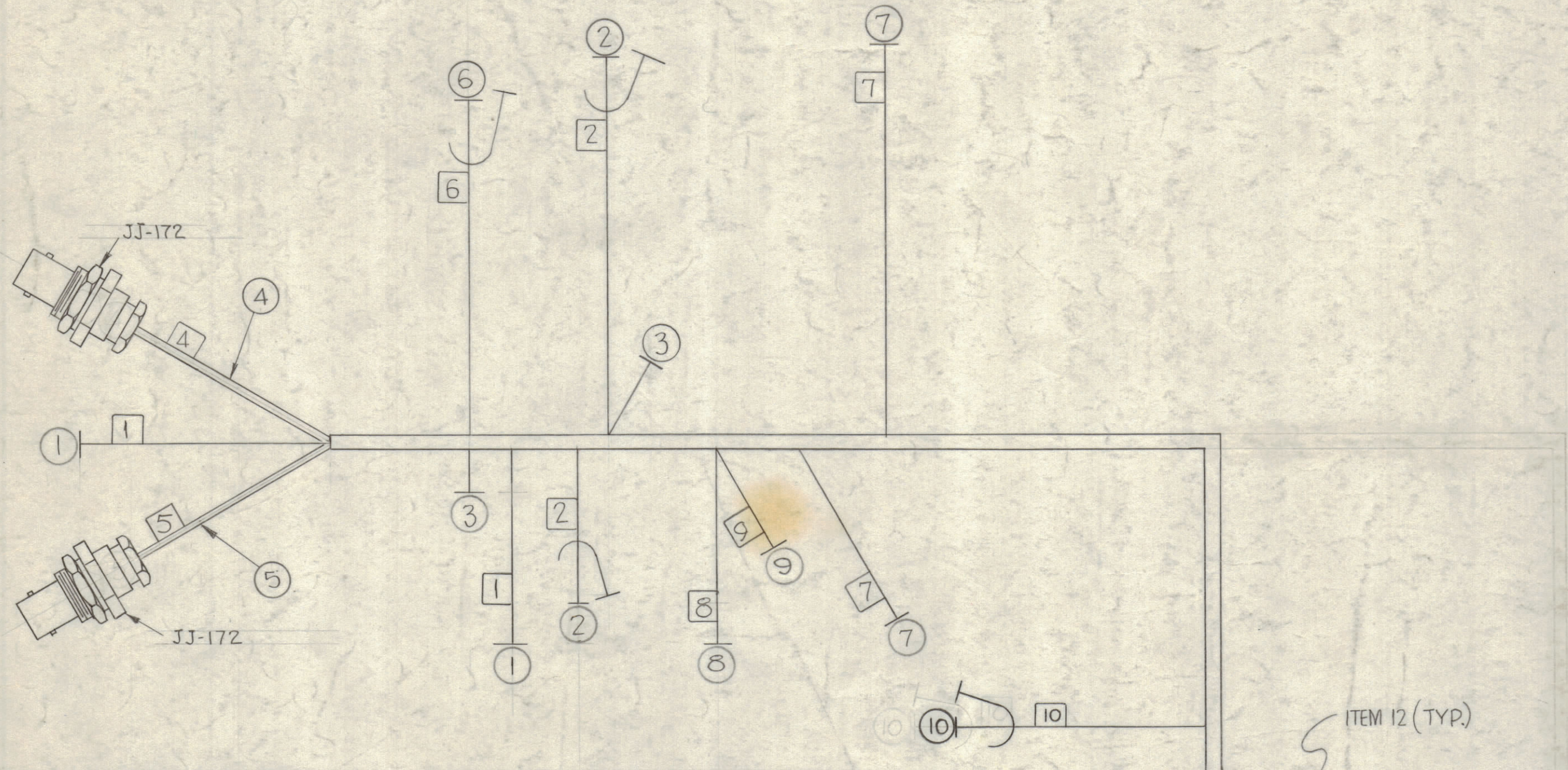


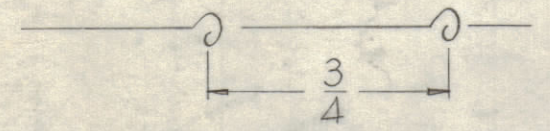
NOTICE TO PERSONS RECEIVING THIS DRAWING

THE TECHNICAL MATERIEL CORPORATION claims proprietary right in the material disclosed herein. This drawing is issued in confidence for engineering information only and may not be reproduced or used to manufacture anything shown herein without permission from THE TECHNICAL MATERIEL CORPORATION to the user. This drawing is loaned for mutual assistance and is subject to recall at any time.

Property of:
THE TECHNICAL MATERIEL CORPORATION
 MAMARONECK, NEW YORK

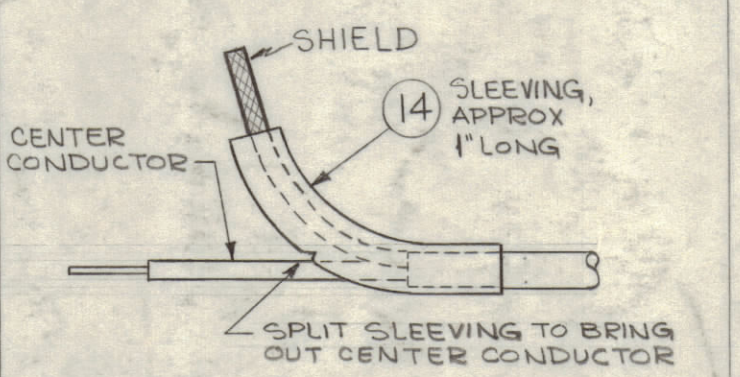
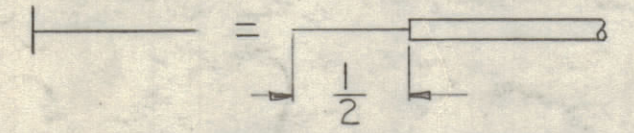


WIRES SHOULD BE PLACED IN CABLE IN NUMERICAL SEQUENCE AS THEY APPEAR IN ITEM COLUMN. SPACE LACING APPROX. 3/4" APART.

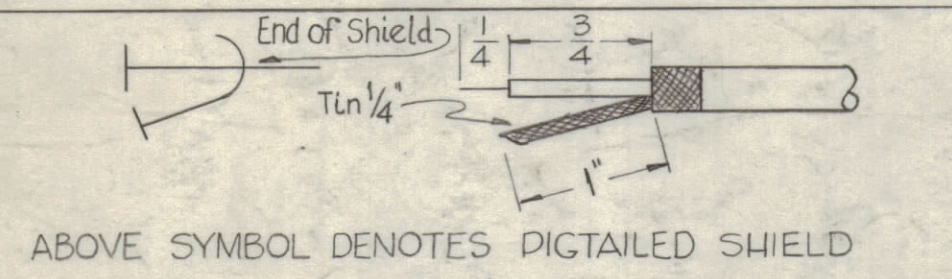


- = DENOTES ITEM NO'S
- = DENOTES WIRE MARKERS
- ⬡ = DENOTES CONNECTOR

THIS SYMBOL DENOTES END OF INSULATION & NAIL DRIVING POINT WIRE MUST BE STRIPPED 1/2" BEYOND THIS POINT & TINNED 3/8".



TERMINATE ENDS OF ALL RF CABLES WITH ITEM (14) AS SHOWN



ABOVE SYMBOL DENOTES PIGTAILED SHIELD

REQ.	ITEM	PART NO.	DESCRIPTION	SYMBOL
	8"	14 PX-100-1-.106	SLEEVING, INSULATION, SIZE #10	BLK.
	X	13 BS-100	SOLDER, SOFT	
	18	12 LA-101	WIRE MARKER	
	X	11 CD-101-1-MW	CORD, LACING	
	6 1/2	10 CA-351-6.5	CABLE, RF	
	11 1/4	9 MWC22(7)U2	WIRE, HOOK-UP	RED
	8 8	11 1/2 8 MWC22(7)U2	WIRE, HOOK-UP	RED
	7 7	7 MWC22(7)U2	WIRE, HOOK-UP	RED
	18 1/4	6 CA-351-18.25	CABLE, RF	
	17 1/2	5 CA-480-14-17.75	CABLE, RF	
	17 1/2	4 CA-480-14-17.5	CABLE, RF	
	3 1/2	3 MWC22(7)U2	WIRE, HOOK-UP	RED
	6 1/4	2 CA-351-6.25	CABLE, RF	
	6 5/8	1 MWC22(7)U2	WIRE, HOOK-UP	RED

SYM	ZONE	DESCRIPTION	DATE	CH. NO.	DRAFTS	CHECKER	ENG. APP.
C	B3,D4	IT-10 EXT. (1 PL) TO 3 3/4", SHORT. (1 PL) TO 2 1/4"	10.8.64	12593	MB	Q	22
B	E,F7	ON PICTORIAL JJ-172 ADDED TO ITEMS (4) & (5)	9.17.63	8966	E	W	15
A		R.F. DETAIL & ITEM (14) ADDED	2-12-63	8230	E	W	15

UNLESS OTHERWISE SPECIFIED:
 DIMENSIONS ARE IN INCHES
 TOLERANCES ON FRACTIONS ± 1/64 DECIMALS ± .005 ANGLES ± 1/2°
 SCALE: 1" = 1"

MAXIMUM ALLOWABLE TOLERANCES HAVE BEEN DETERMINED AND ANY DEVIATIONS WILL BE CAUSE FOR REJECTION. REMOVE ALL BURRS & SHARP EDGES

REQ. PER UNIT	MODEL	SECTION	ASSY. NO.	DATE
1	4NF-1			7-26-62

THE TECHNICAL MATERIEL CORP. MAMARONECK, NEW YORK			
CABLE, ELECTRICAL, MAIN			
DRAWN		CHECKED	
TYPE & TEMPER		HEAT TREAT. SPEC.	
FINISH & SPEC. NO.		ELEC. DES. APP.	
MECH. DES. APP.		SHEET OF	
DRAWN: [Signature]		CHECKED: [Signature]	
TYPE & TEMPER: [Blank]		HEAT TREAT. SPEC.: [Blank]	
FINISH & SPEC. NO.: [Blank]		ELEC. DES. APP.: [Signature]	
MECH. DES. APP.: [Signature]		SHEET OF: CA-698 C	