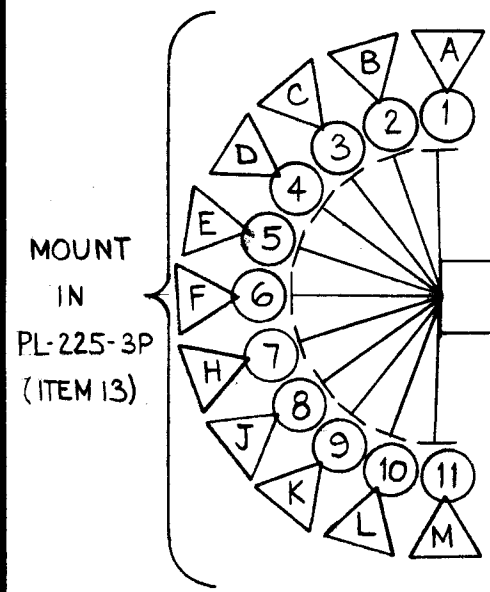
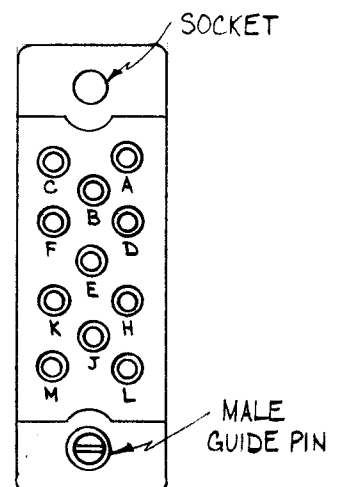


REVISIONS					
SYM	DESCRIPTION	DATE	E.M.N. NO.	DRAFT	CHKD APPD
A	REVISED DESCRIPTION OF ITEM 14	8/21/72	20797	GE	EQ EQ



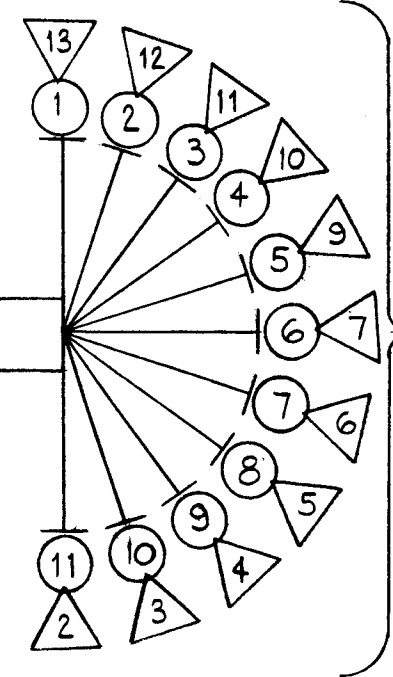
MOUNT IN PL-225-3P (ITEM 13)



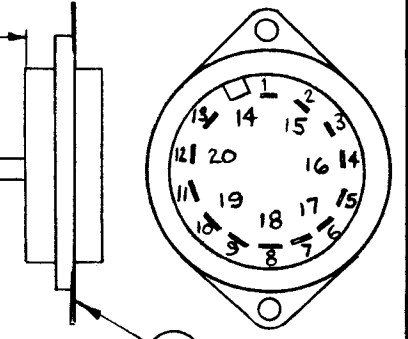
PIN DETAIL OF PL-225-3P (TOP VIEW)

**SYMBOL NOTES -**  
 ○ DENOTES ITEM N<sup>o</sup>S.  
 △ DENOTES PIN N<sup>o</sup>S.

NOTE:  
 WHEN RE-ASSEMBLING, MALE GUIDE PIN TO BE LOCATED BETWEEN PINS "M" & "L".

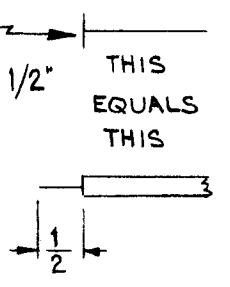


MOUNT IN TS-157 (ITEM 14)

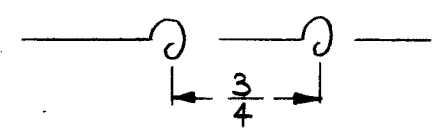


TS-157 DETAIL

THIS SYMBOL DENOTES END OF INSULATION & NAIL DRIVING POINT WIRE MUST BE STRIPPED 1/2" BEYOND THIS POINT & TINNED 3/8" UNLESS OTHERWISE SPECIFIED.



WIRES SHOULD BE PLACED IN NUMERICAL SEQUENCE AS THEY APPEAR IN ITEM COLUMN. SPACE LACING APPROX. 3/4" APART.



NOTES

**NOTICE TO PERSONS RECEIVING THIS DRAWING**

THE TECHNICAL MATERIEL CORPORATION claims proprietary right in the material disclosed hereon. This drawing is issued in confidence for engineering information only and may not be reproduced or used to manufacture anything shown hereon without permission from THE TECHNICAL MATERIEL CORPORATION to the user. This drawing is loaned for mutual assistance and is subject to recall at any time.

Property of:  
 THE TECHNICAL MATERIEL CORPORATION  
 MAMARONECK, NEW YORK

1	HFS-1	
Q'TY./UNIT	MODEL USED ON	ASS'Y. NO.
SCALE	CODE	

THE CONTENTS OF THIS DRAWING ARE THE EXCLUSIVE PROPERTY OF THE TECHNICAL MATERIEL CORP. ITS UNAUTHORIZED USE OR REPRODUCTION IN WHOLE OR IN PART IS STRICTLY FORBIDDEN.

REQ'D.	ITEM	PART NUMBER	DESCRIPTION	SYMBOL
X	16	BS-100	SOLDER, SOFT	
	6 7/8"	15	PX-100-1-.085	BLACK
	1	14	TS-157	XDS3007
	1	13	PL-225-3P	
X	12	CD-101-1-MW	CORD LACING	BLACK
	11 3/4"	11	MWC 24 (7) U92	WH/RED
	11 3/4"	10	0	BLACK
	11 3/4"	9	9	WHITE
	11 3/4"	8	8	GREY
	11 3/4"	7	7	VIOLET
	11 3/4"	6	6	BLUE
	11 3/4"	5	5	GREEN
	11 3/4"	4	4	YELLOW
	11 3/4"	3	3	ORANGE
	11 3/4"	2	2	RED
	11 3/4"	1	MWC 24 (7) U 1	BROWN

J. STRUMMER		LIST OF MATERIAL	
MATERIAL		THE TECHNICAL MATERIEL CORP. MAMARONECK, NEW YORK	
FINISH		TITLE CABLE, DIGITAL READOUT INDICATOR (11 WIRE)	
UNLESS OTHERWISE SPECIFIED DIMENSIONS ARE IN INCHES AND INCLUDE CHEMICALLY APPLIED OR PLATED FINISHES		DRAWN W.A.F.	DATE 3-8-62
DECIMALS .X ± .05 .XX ± .01 .XXX ± .005		CHECKED [Signature]	DATE 6-22-62
FRACTIONS ± 1/64 ANGLES ± 0° 30'		DATE 6-22-68	DATE 6-22-62
TOLERANCES		FINAL APPROVAL [Signature]	
		DATE 6-22-62	
		SHEET	