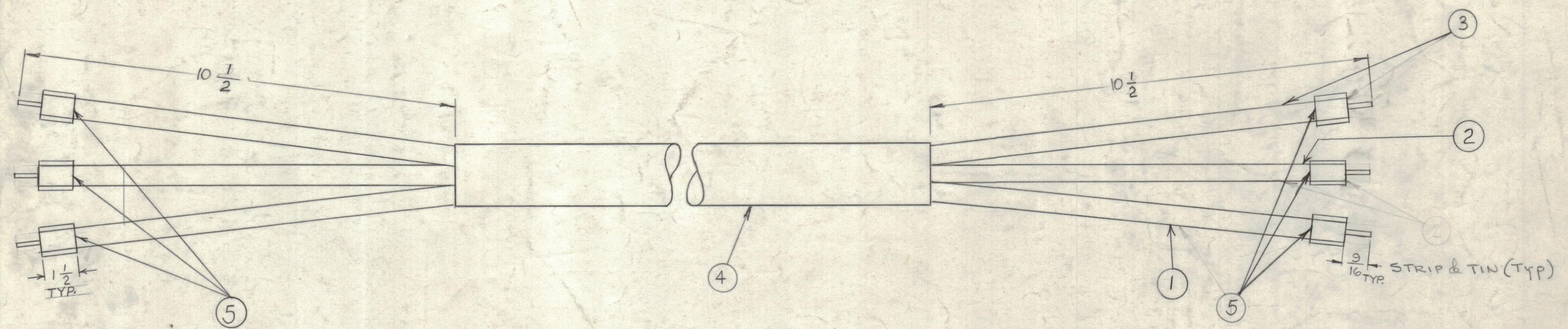


NOTICE TO PERSONS RECEIVING THIS DRAWING

THE TECHNICAL MATERIEL CORPORATION claims proprietary right in the material disclosed hereon. This drawing is issued in confidence for engineering information only and may not be reproduced or used to manufacture anything shown hereon without permission from THE TECHNICAL MATERIEL CORPORATION to the user. This drawing is loaned for mutual assistance and is subject to recall at any time.

Property of:
THE TECHNICAL MATERIEL CORPORATION
 MAMARONECK, NEW YORK



(DO NOT SCALE)

REQ.	ITEM	PART NO.	DESCRIPTION	SYMBOL
9"	5	PX-830-375-1	SLEEVING, INSULATION, SHRINK	BLACK
123'	4	PX-100-1-1.250	SLEEVING, INSULATION	BLACK
144"	3	WI-137-1	WIRE, HIGH VOLTAGE	WHITE
144"	2	WI-137-1	WIRE, HIGH VOLTAGE	WHITE
144"	1	WI-137-1	WIRE, HIGH VOLTAGE	WHITE

REQ.		ITEM		PART NO.		DESCRIPTION		SYMBOL	
BUDETTI									
THE TECHNICAL MATERIEL CORP. MAMARONECK, NEW YORK									
CABLE ASSEMBLY ELECTRICAL MAIN BREAKER, LONG									
DRAWN		CHECKED		FINAL APPROVAL					
G-D.L.		XDe		JMA					
TYPE & TEMPER		HEAT TREAT. SPEC.		FINISH & SPEC. NO.		ELEC. DES. APP.		MECH. DES. APP.	
						ca		CA-694	
								A	
								SHEET OF	

SYM	ZONE	DESCRIPTION	DATE	CH. NO.	DRAFTS	CHECKER	ENG. APP.
A		EXTEN. CHG. SEE EMN # 10872	2-14-64	10872	A.M.	TR	

UNLESS OTHERWISE SPECIFIED:
 DIMENSIONS ARE IN INCHES
 TOLERANCES ON FRACTIONS ± 1/64 DECIMALS ± .005 ANGLES ± 1/2°

SCALE **DO NOT SCALE**

MAXIMUM ALLOWABLE TOLERANCES HAVE BEEN DETERMINED AND ANY DEVIATIONS WILL BE CAUSE FOR REJECTION. REMOVE ALL BURRS & SHARP EDGES

REQ. PER UNIT	MODEL	SECTION	ASS'Y. NO.	DATE
1	GPT-40K		AP-106	4-19-62