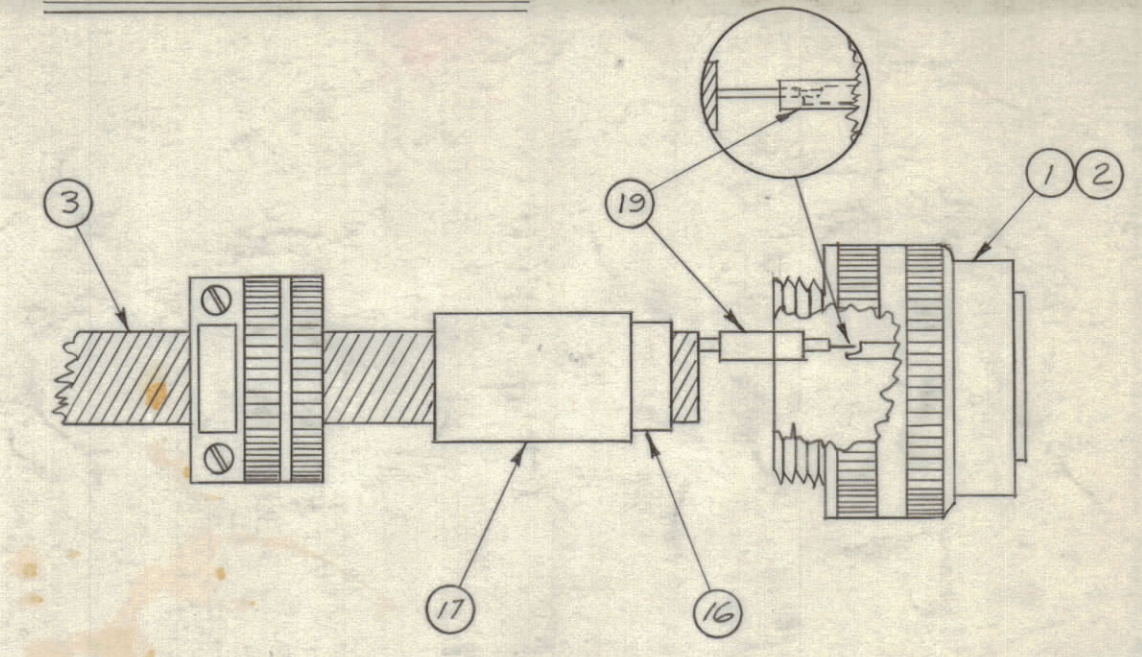


~DETAIL OF WIRING~



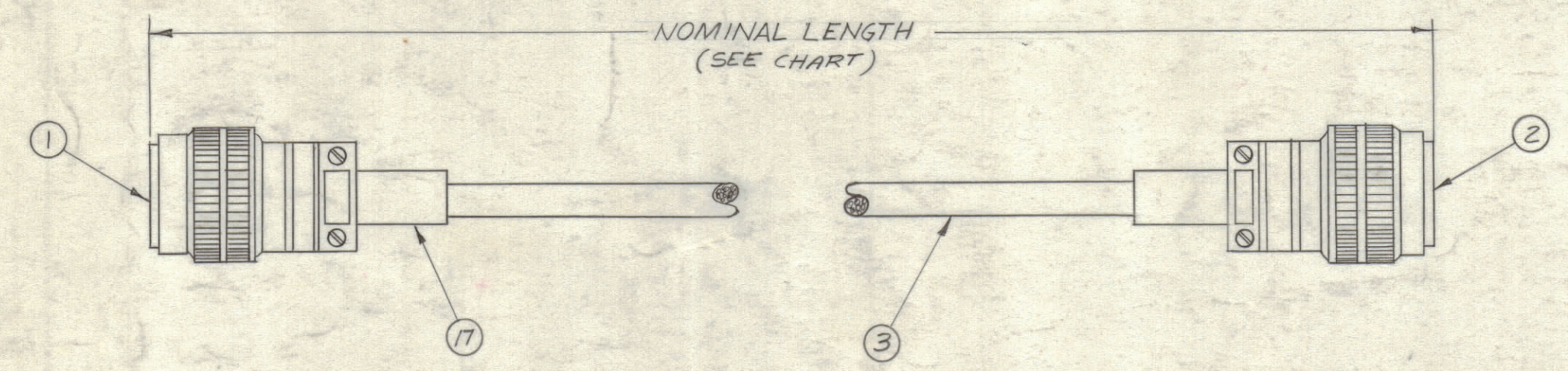
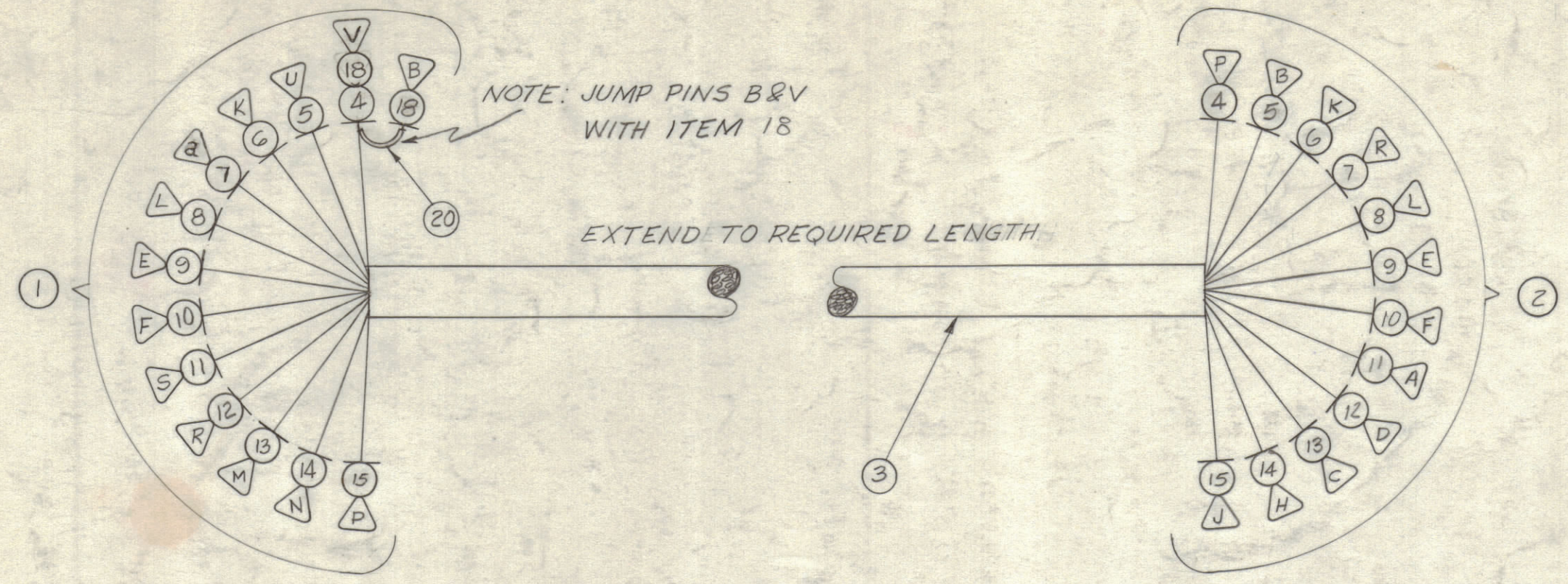
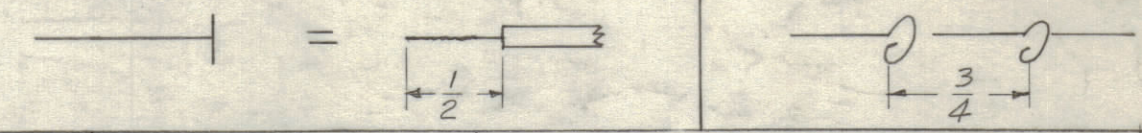
~LEGEND~

- ~ DENOTES ITEM NUMBER
- ▽ ~ DENOTES PIN CONNECTION

NOTE: BUSHING SHOULD BE PUT ON PLUG SIDE BEFORE MOUNTING PLUG.

THIS SYMBOL DENOTES END OF INSULATION & NAIL DRIVING POINT. WIRE MUST BE STRIPPED 1/2" BEYOND THIS POINT & TINNED 3/8" UNLESS OTHERWISE SPECIFIED.

WIRES SHOULD BE PLACED IN CABLE IN NUMERICAL SEQUENCE AS THEY APPEAR IN ITEM COLUMN. SPACE LACING APPROX 3/4" APART



TMC PART NUMBER	NOMINAL LENGTH IN INCHES	TMC PART NO. FOR ITEM ③	COLOR OF ITEM 3
CA-686-1	78	PX-100-5-.375	GREEN

NOTICE TO PERSONS RECEIVING THIS DRAWING
 THE TECHNICAL MATERIEL CORPORATION claims proprietary right in the material disclosed hereon. This drawing is issued in confidence for engineering information only and may not be reproduced or used to manufacture anything shown hereon without permission from THE TECHNICAL MATERIEL CORPORATION to the user. This drawing is loaned for mutual assistance and is subject to recall at any time.
 Property of:
 THE TECHNICAL MATERIEL CORPORATION
 MAMARONECK, NEW YORK

REQ'D.	ITEM	PART NUMBER	DESCRIPTION	SYMBOL
X	21	CD-101-1MW	CORD, NYLON, LACING	BLK.
1"	20	PX-104-7-.022	INSULATION, SLEEVING, VINYL COVERED	GREY
20"	19	PX-100-1-.095	INSULATION, SLEEVING	BLACK
1"	18	WL-100-8	BUSS WIRE #24	
2	17	MS-3420-12A	BUSHING, CABLE, ADAPTER, TELESCOPING	BLACK
2	16	MS-3420-8A	BUSHING, CABLE, ADAPTER, TELESCOPING	BLACK
	15	MWC 20(7)U3	CABLE, INSULATED	ORANGE
	14	MWC 20(7)U96		WH/BLUE
	13	MWC 20(7)U6		BLUE
	12	MWC 20(7)U94		WH/YELLOW
	11	MWC 20(7)U4		YELLOW
	10	MWC 20(7)U91		WH/BROWN
	9	MWC 20(7)U1		BROWN
	8	MWC 20(7)U0		BLACK
	7	MWC 20(7)U92		WH/RED
	6	MWC 20(7)U2		RED
	5	MWC 20(7)U95		WH/GRN
	4	MWC 20(7)U90	CABLE, INSULATED	WH/BLK
	3	SEE CHART	INSULATION, SLEEVING	
1	2	PL-212-2	CONNECTOR PLUG (14 PIN, FEMALE)	
1	1	PL-212-3	CONNECTOR PLUG (24 PIN, MALE)	

KOHN		LIST OF MATERIAL	
MATERIAL		THE TECHNICAL MATERIEL CORP. MAMARONECK, NEW YORK	
FINISH		TITLE CABLE ASSY; SPECIAL PURPOSE, ELECTRICAL	
UNLESS OTHERWISE SPECIFIED DIMENSIONS ARE IN INCHES AND INCLUDE CHEMICALLY APPLIED OR PLATED FINISHES		DRAWN w. s.	DATE 5/19/62
DECIMALS .X ± .05 .XX ± .01 .XXX ± .005		CHECKED H. De	DATE 9 MAY 62
FRACTIONS ± 1/64 ANGLES ± 0° 30'		ELECT. DES. RK	DATE 9 MAY 62
TOLERANCES		MECH. DES. RK	DATE 9 MAY 62
REQ. PER UNIT		FINAL APPROVAL BT	DATE
MODEL		CA-686 C	
SECTION		SHEET	
ASS'Y. NO.		REV. LTR.	
DATE			

SYM	ZONE	DESCRIPTION	DATE	CH. NO.	DRAFTS	CHECKER	ENG. APP.
C	D2	IT. 21 WAS CD-101-MW CORD, LACING	7.21.64	11907	MSB	MSB	MSB
B	-	NOMINAL LENGTH 78" WAS 68	12-12-63	10493	ED	ED	ED
A	-	ITEM (21) ADDED, NOMINAL LENGTH WAS 76", LENGTHS ADDED	9-20-62	7348	ED	ED	ED

UNLESS OTHERWISE SPECIFIED:
 DIMENSIONS ARE IN INCHES
 TOLERANCES ON
 FRACTIONS ± 1/64 DECIMALS ± .005 ANGLES ± 1/2°

SCALE
 MAXIMUM ALLOWABLE TOLERANCES HAVE BEEN DETERMINED AND ANY DEVIATIONS WILL BE CAUSE FOR REJECTION.
 REMOVE ALL BURRS & SHARP EDGES

REQ. PER UNIT	MODEL	SECTION	ASS'Y. NO.	DATE
2	RAK 22			5-7-62