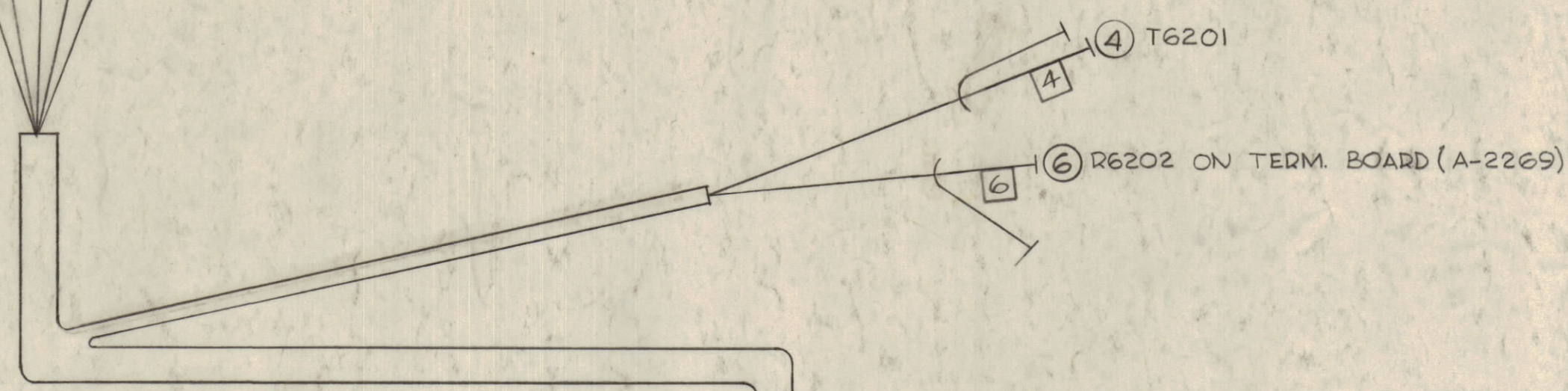
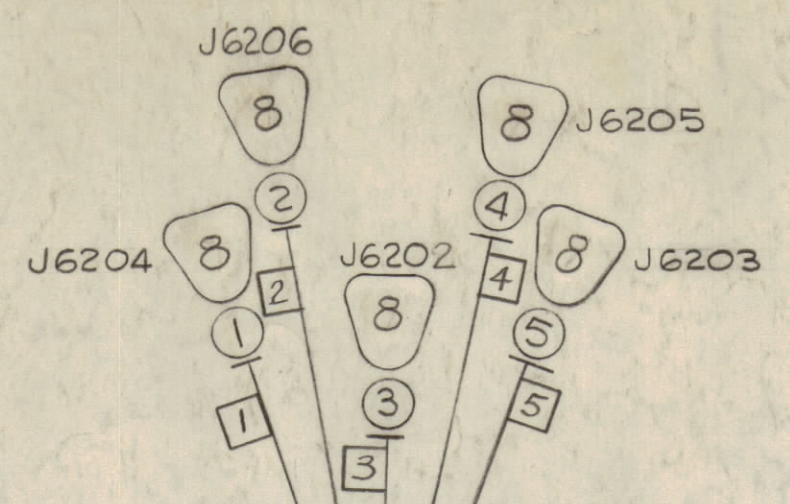


WIRES SHOULD BE PLACED IN CABLE IN NUMERICAL SEQUENCE AS THEY APPEAR IN ITEM COLUMN. SPACE LACING APPROX. 3/4" APART.

NOTICE TO PERSONS RECEIVING THIS DRAWING

THE TECHNICAL MATERIEL CORPORATION claims proprietary right in the material disclosed hereon. This drawing is issued in confidence for engineering information only and may not be reproduced or used to manufacture anything shown hereon without permission from THE TECHNICAL MATERIEL CORPORATION to the user. This drawing is loaned for mutual assistance and is subject to recall at any time.

Property of:
 THE TECHNICAL MATERIEL CORPORATION
 MAMARONECK, NEW YORK

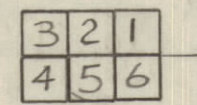


S-6202-A CHANNEL-B

S-6201-A CHANNEL-A

GROUND SHIELDS OF S-6203

- SYMBOL NOTES**
- DENOTES ITEM NO'S.
 - ▽ DENOTES PIN NO'S.
 - DENOTES CONNECTOR
 - DENOTES WIRE MARKER



REQ. ITEM	PART NO.	DESCRIPTION	SYMBOL
11	LA101-	WIRE MARKER	
10	BS-100	SOLDER, SOFT	
9	CD-101-1-MW	CORD, LACING	BLACK
8	JJ-172	CONNECTOR, RECEPTACLE	J6202 THRU J6206
7		DELETED	
6	RG-174/U	CABLE, COAXIAL	
5			
4			
3			
2			
1	RG-174/U	CABLE, COAXIAL	

SYM	ZONE	DESCRIPTION	DATE	CH. NO.	DRAFTS	CHECKER	ENG. APP.

UNLESS OTHERWISE SPECIFIED:
 DIMENSIONS ARE IN INCHES
 TOLERANCES ON FRACTIONS ± 1/64 DECIMALS ± .005 ANGLES ± 1/2°

SCALE
 MAXIMUM ALLOWABLE TOLERANCES HAVE BEEN DETERMINED AND ANY DEVIATIONS WILL BE CAUSE FOR REJECTION. REMOVE ALL BURRS & SHARP EDGES

REQ. PER UNIT	MODEL	SECTION	ASSY. NO.	DATE
1	HFI-1			2-15-62

THE TECHNICAL MATERIEL CORP. MAMARONECK, NEW YORK			
CABLE ASS'Y, ELECTRICAL BRANCHED COAXIAL INTERCONNECT			
DRAWN	CHECKED	FINAL APPROVAL	
		CA-685	
ELEC. DES. APP.	MECH. DES. APP.	SHEET OF	

CA-685