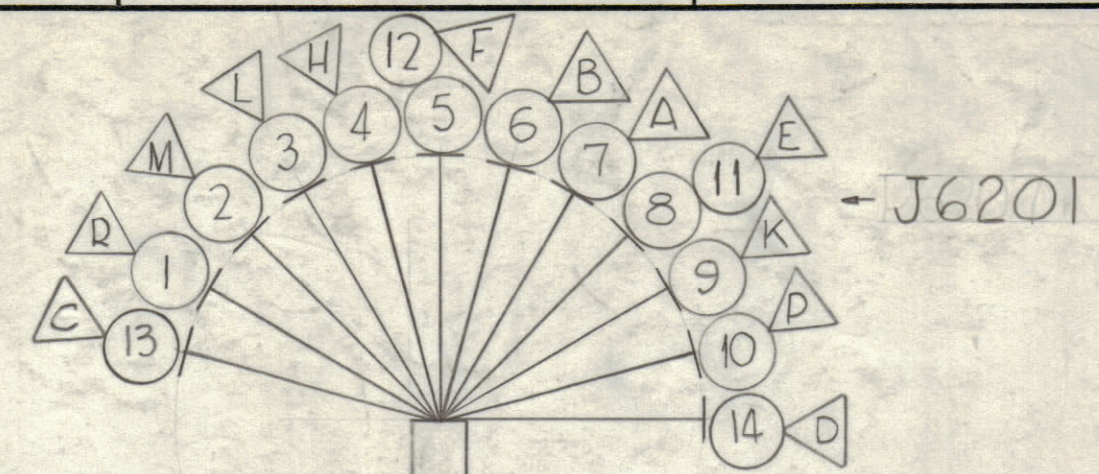
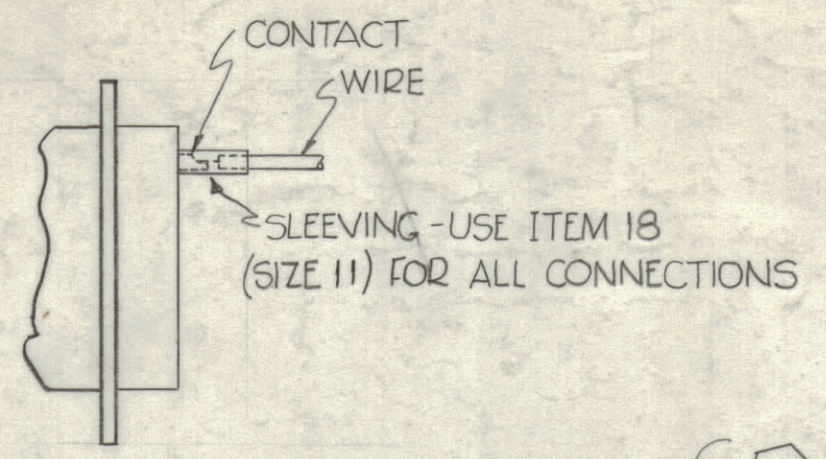
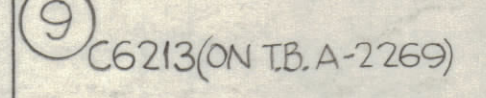
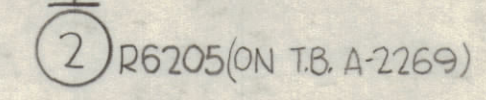
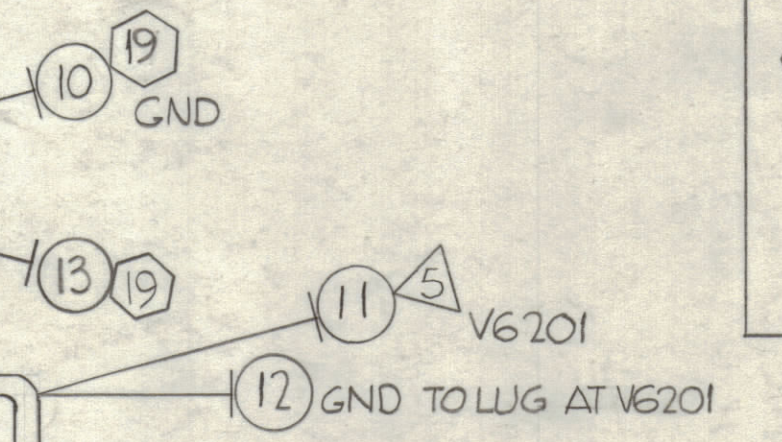
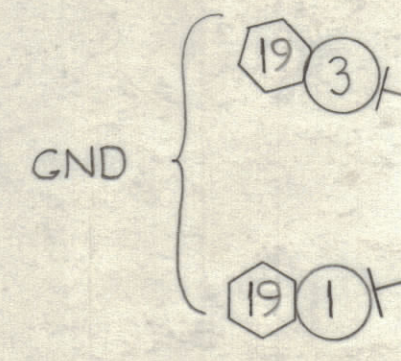
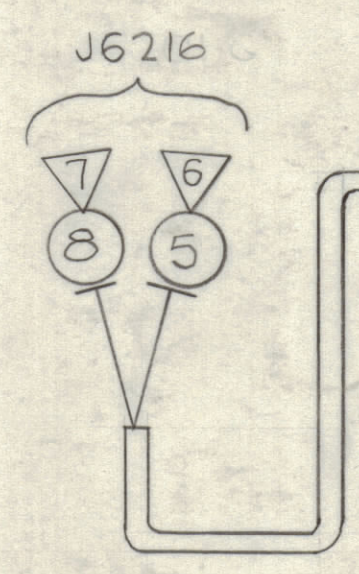


REAR VIEW
ITEM-15
ITEM 17



— SYMBOL NOTES —
 ○ = DENOTES ITEM NO'S.
 ▼ = DENOTES PIN NO'S & SWITCH POSITIONS NO'S.
 ⬡ = DENOTES LUGS

— ITEM NOTES —
 ITEM NO'S. 1, 3 & 10 CONNECT TO BASE OF CONNECTOR (ITEM 15) JJ-200-2

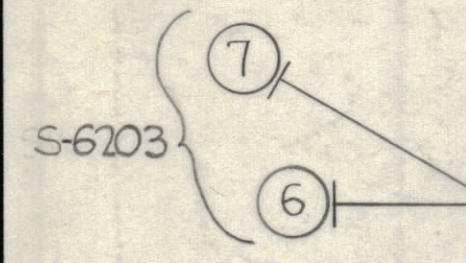


THIS SYMBOL DENOTES END OF INSULATION & NAIL DRIVING POINT. WIRE MUST BE STRIPPED 1/2" BEYOND THIS POINT & TINNED 3/8" UNLESS OTHERWISE SPECIFIED.

THIS EQUALS THIS

WIRES SHOULD BE PLACED IN CABLE IN NUMERICAL SEQUENCE AS THEY APPEAR IN ITEM COLUMN. SPACE LACING APPROX. 3/4" APART.

REQ.	ITEM	PART NO.	DESCRIPTION	SYMBOL
	4	19	TE-156-32947	LUG, GROUND
	-	18	PX-100-1-.095	INSULATION, SLEEVING
	1	17	JJ-200-2	CONNECTOR, RECEPTACLE
	X	16	BS-100	SOLDER, SOFT
	-	15	CD-101-1-MW	CORD, LACING RECEPTACLE
	17 1/2	14	MWC20(7)U1	CABLE, INSULATED
	6 1/4	13	MWC20(7)U91	CABLE, INSULATED
	8 3/8	12	MWC20(7)U91	CABLE, INSULATED
	8 5/8	11	MWC20(7)U1	CABLE, INSULATED
	6 1/4	10	MWC24(7)U0	CABLE, INSULATED
	11 1/4	9	MWC24(7)U2	CABLE, INSULATED
	16 3/4	8	MWC20(7)U1	CABLE, INSULATED
	33"	7	MWC24(7)U8	CABLE, INSULATED
	32 1/2"	6	MWC24(7)U3	CABLE, INSULATED
	16 3/4"	5	MWC20(7)U91	CABLE, INSULATED
	17 5/8"	4	MWC24(7)U7	CABLE, INSULATED
	6 1/2"	3	MWC24(7)U0	CABLE, INSULATED
	11 3/4"	2	MWC24(7)U9	CABLE, INSULATED
	6 5/8"	1	MWC24(7)U0	CABLE, INSULATED



SYM	ZONE	DESCRIPTION	DATE	CH. NO.	DRAFTS	CHECKER	ENG. APP.

UNLESS OTHERWISE SPECIFIED:
 DIMENSIONS ARE IN INCHES
 TOLERANCES ON FRACTIONS ± 1/64 DECIMALS ± .005 ANGLES ± 1/2°

SCALE: ---

MAXIMUM ALLOWABLE TOLERANCES HAVE BEEN DETERMINED AND ANY DEVIATIONS WILL BE CAUSE FOR REJECTION. REMOVE ALL BURRS & SHARP EDGES

REQ. PER UNIT	MODEL	SECTION	ASS'Y. NO.	DATE
1	HFI-1			7-26-62

REQ.	ITEM	PART NO.	DESCRIPTION	SYMBOL
M. GELLMAN				
THE TECHNICAL MATERIEL CORP. MAMARONECK, NEW YORK				
STOCK SIZE				
CABLE ASS'Y., ELECTRICAL BRANCHED POWER INPUT				
MATERIAL				
DRAWN: D. J. ... CHECKED: RUZZO				
TYPE & TEMPER HEAT TREAT. SPEC.				
FINISH & SPEC. NO.				
ELEC. DES. APP. MECH. DES. APP. SHEET OF				
CA-684				