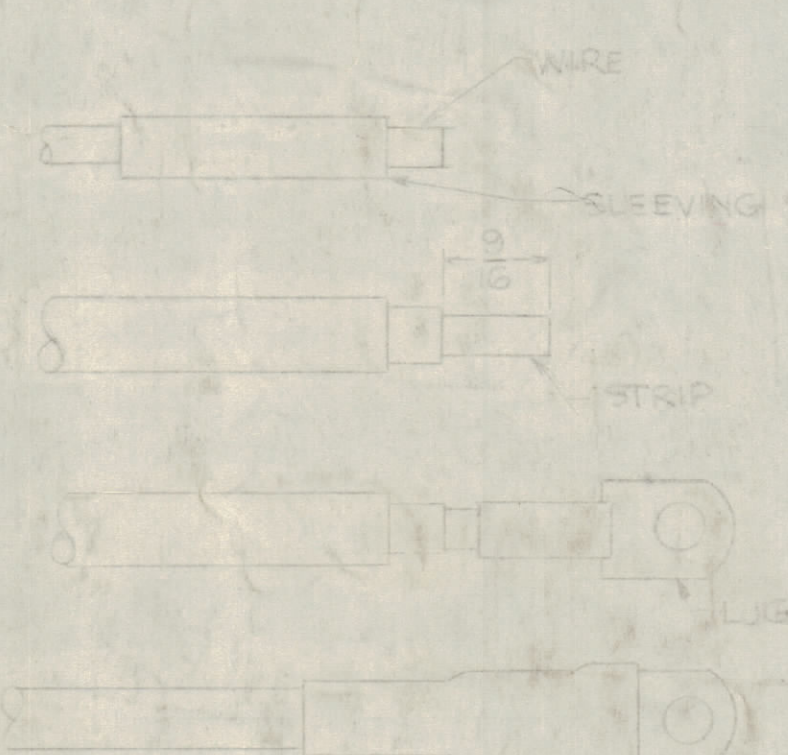
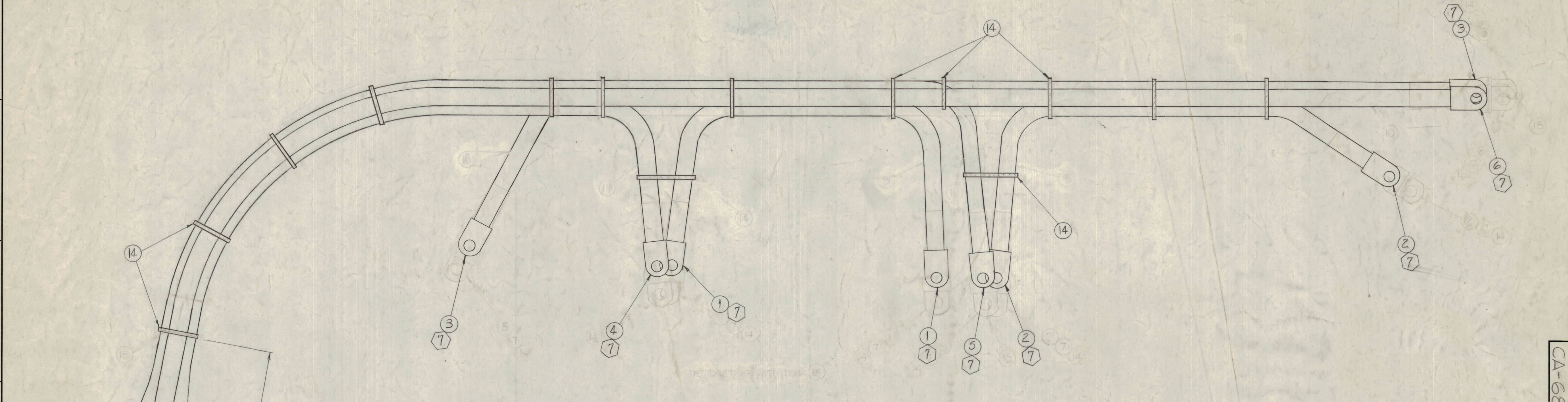


CA-682 F



MOUNTING ASSEMBLY FOR LUG
 STEP 1
 1- SLIDE ITEM 12 (ITEM 14) OVER END OF WIRE
 2- STRAP WIRE END
 3- PLACE AN 860 (ITEM 7) ON END OF WIRE, CRIMP
 4- SLIDE ITEM 14 OVER ITEM 7, APPLY HEAT 550-750°F FOR APERM SOLDER UNTIL ITEM 14, STRAP IS TIGHT TO ITEM 7.
 STEP 2
 STEP 3
 STEP 4

NOTE
 WIRES SHOULD BE PLACED IN NUMERICAL SEQUENCE AS THEY APPEAR IN ITEM COLUMN SPACE ITEM (14) APPROX. AS SHOWN

SYMBOL NOTES.
 ○ - DENOTES ITEM NO'S.
 ⬡ - DENOTES LUGS

TMC P/N	QTY ITEM 7	* ITEM 16
CA 682	12	NONE
CA 682-2	9	3

* NOTE
 FOR CA 682-2
 PREPARE THIS END AS USUAL AND APPLY SOLDER & ITEM 16 ONLY

SEE CHART

REQ. ITEM	PART NO.	DESCRIPTION	SYMBOL
X 17	BS 100	SOLDER, TIN ALLOY	
* 16	PXB30-4-1	INS., SLVG, SHRINK	BLACK
# 15	-#	DELETED	
14 14	CU-142-1-0	STRAP, CABLE CLAMP	
#	-#	DELETED	
#	-#	DELETED	
#	-#	DELETED	
#	-#	DELETED	
#	-#	DELETED	
#	-#	DELETED	
* 7	TE-197-4-25	TERMINAL, LUG, INSULATED	
38"	HWC 6 (127) B 8	CABLE, INSULATION	
31"	HWC 6 (127) B 9	CABLE, INSULATION	
23"	HWC 6 (127) B 7	CABLE, INSULATION	
22"	HWC 6 (127) B 8	CABLE, INSULATION	
12"	HWC 6 (127) B 9	CABLE, INSULATION	
12"	HWC 6 (127) B 7	CABLE, INSULATION	

REV.	DATE	CH. NO.	DRAFTS	CHECKER	ENG. APP.
F	7/13/77	20801			
E	12/7/70	20144	GE		
D	8/24/70	19946	LLH		
C	10-25-66	17050	WHW		
B	10-20-64	12134	9E		
A	10-27-62	7487			

NOTICE TO PERSONS RECEIVING THIS DRAWING
 THE TECHNICAL MATERIEL CORPORATION claims proprietary right in the material disclosed herein. This drawing is issued in confidence for engineering information only and may not be reproduced or used to manufacture anything shown hereon without permission from THE TECHNICAL MATERIEL CORPORATION to the user. This drawing is loaned for mutual assistance and is subject to recall at any time.
 Property of:
 THE TECHNICAL MATERIEL CORPORATION
 MAMARONECK, NEW YORK

REQ. PER UNIT	MODEL	SECTION	ASSY. NO.	DATE
	GPT-10K			3-2-62

TYPE & TEMPER	HEAT TREAT. SPEC.	FINISH & SPEC. NO.	ELIC. DES. APP.	MECH. DES. APP.	SHEET OF
			20	00	CA-682 F