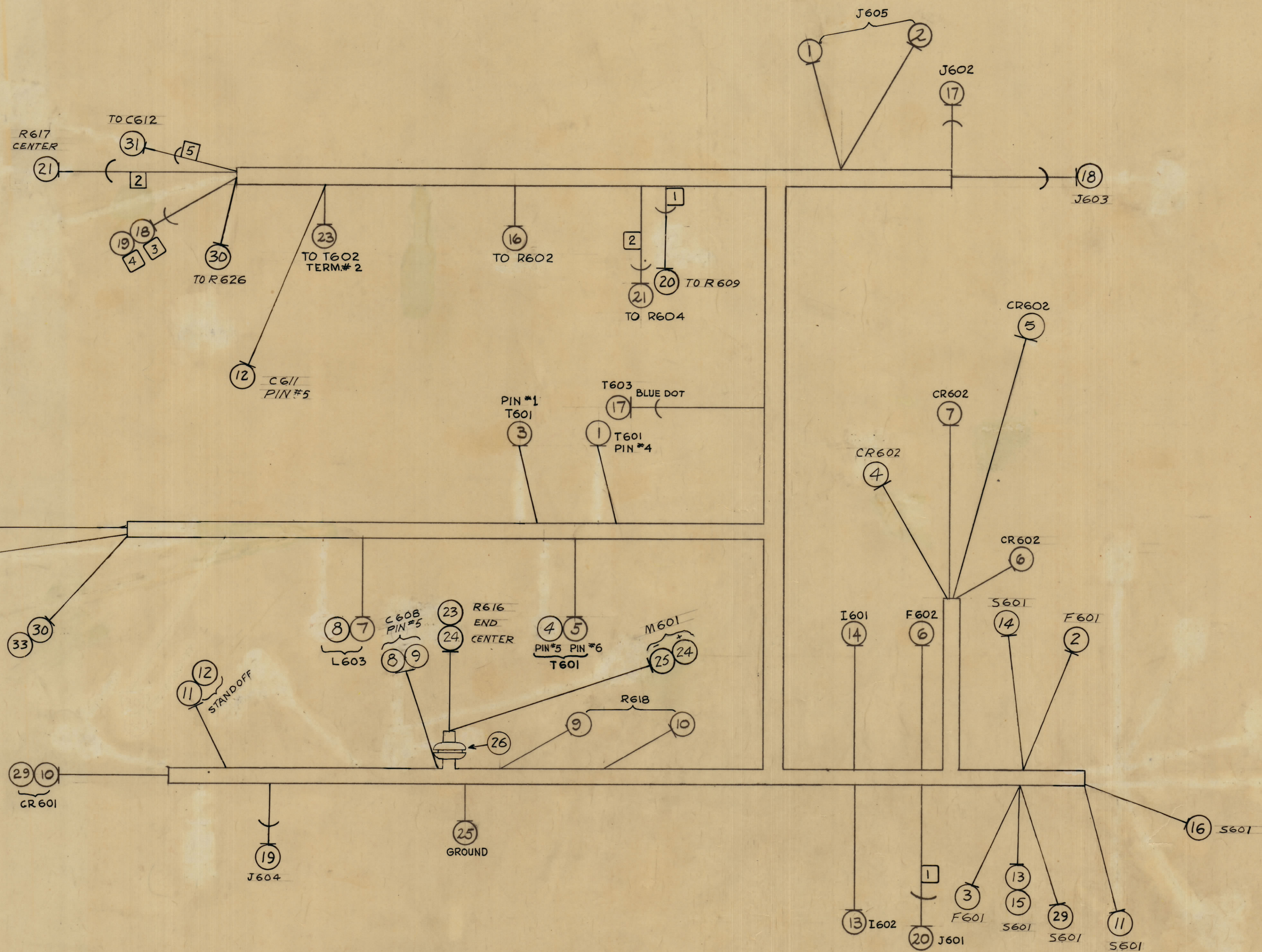


NOTICE TO PERSONS RECEIVING THIS DRAWING

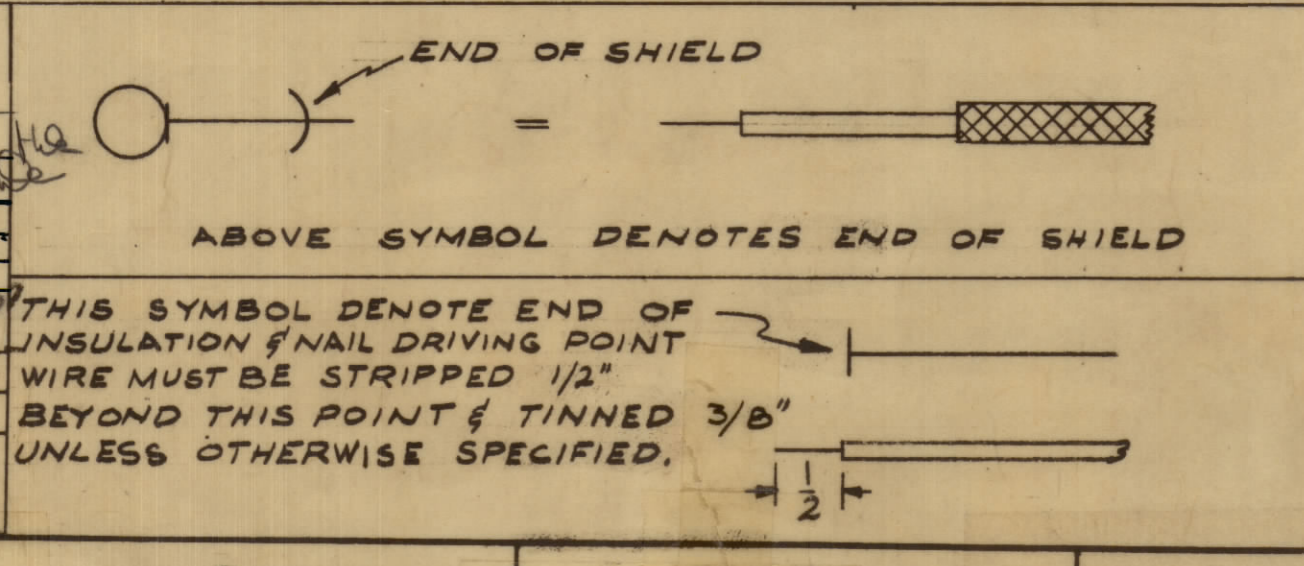
THE TECHNICAL MATERIEL CORPORATION claims proprietary right in the material disclosed hereon. This drawing is issued in confidence for engineering information only and may not be reproduced or used to manufacture anything shown hereon without permission from THE TECHNICAL MATERIEL CORPORATION to the user. This drawing is loaned for mutual assistance and is subject to recall at any time.

Property of:
THE TECHNICAL MATERIEL CORPORATION
MAMARONECK, NEW YORK



REQ. ITEM	PART NO.	DESCRIPTION	SYMBOL
34	BS100	SOLDER, TIN ALLOY	
9	33	MWC20(7)U5	CABLE, INSULATED GRN.
X	32	LA-101	WIRE MARKER
34 1/2	31	RG174/U	CABLE, COAXIAL
29	30	MWC20(7)U5	CABLE, INSULATED GREEN
20 1/2	29	MWC20(7)U5	CABLE, INSULATED GREEN
X	28	CD-1011-MW	CORD, LACING DELETED
-	27		DELETED
1	26	EY-102-3	GROMMET, ELASTIC
7 1/2	25	MWC 20(7)U 0	CABLE, INSULATED BLK.
6 3/8	24	MWC 20(7)U 98	CABLE, INSULATED WH/GREY
27 1/2	23	MWC 20(7)U 8	CABLE, INSULATED GREY
-	22		DELETED
1	21	RG-174/U	CABLE, COAXIAL
18 3/8	20		
31 1/4	19		
17 3/8	18		
11 3/8	17	RG 174/U	CABLE, COAXIAL
24	16	MWC20(7)U 6	CABLE, INSULATED BLUE
27 1/2	15		BROWN
10 3/8	14		WH/BROWN
11 1/4	13		BROWN
33 1/4	12		WH/GREEN
20 3/8	11	MWC20(7)U 95	CABLE, INSULATED WH/GREEN
11 1/2	10	WI140EE20E 5	WIRE, ELECT. TEF GREEN
7	9	WI140EE20E 94	WIRE, ELECT. TEF WH/YELLOW
22 1/2	8	MWC20(7)U 94	CABLE, INSULATED WH/YELLOW
21 3/8	7		YELLOW
8 3/8	6		BLACK
20 3/8	5	U98	WH/GREY
18 3/4	4		WH/OR
18 3/4	3		ORANGE
23 1/4	2		WH/RED
14 1/2	1	MWC 20(7) U 2	CABLE, INSULATED RED

ISSUE	ZONE	DESCRIPTION	DATE	CH. NO.	DRAFTS	CHECKER	ENG. APP.
F		DUPPLICATION of Items 30, 33 CLARIFIED	6-3-68	18950	HSS	CP	
E		COMPLETELY REV.	2-8-68	18762	HSS	CP	
D		IT 3A ADDED	2-1-67	17767	HSS	CP	
C		IT (9) WAS MWC 20(7)U 94, IT (10) WAS MWC 20(7)U 5	6-23-64	16444	HSS	CP	
B		Item (9) WAS MWC 20(7)U 4, Sym. WAS Yellow	2-26-62	6430	HSS	CP	
D2		Item (28) WAS CD-100-2	2-12-62	6333	HSS	CP	
D4		Item (4) WAS 17-1/4 Item (5) WAS 18-1/8	6-23-62	6430	HSS	CP	



WIRES SHOULD BE PLACED IN CABLE IN CABLE IN NUMERICAL SEQUENCE AS THEY APPEAR IN ITEM COLUMN, SPACE LACING APPROX. 3/4" APART.

CA-671

CA-671

CA-671