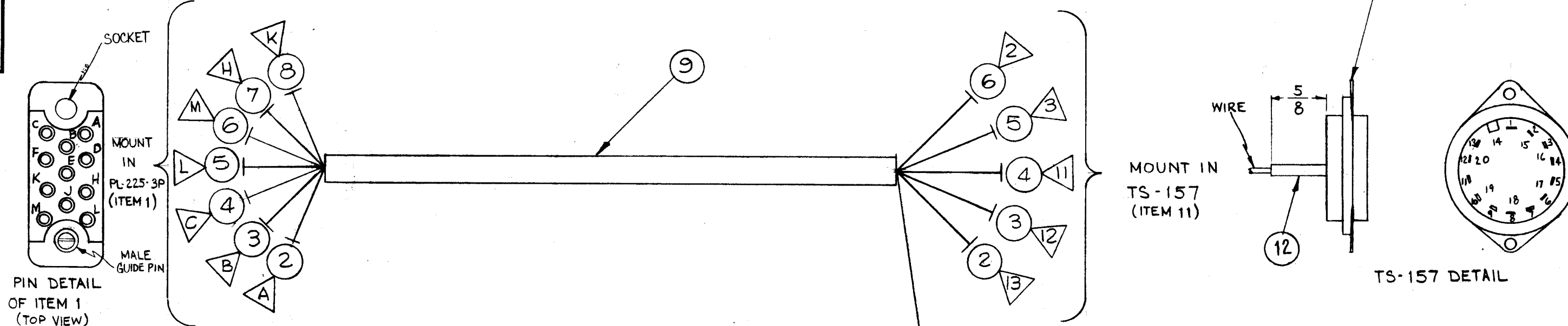


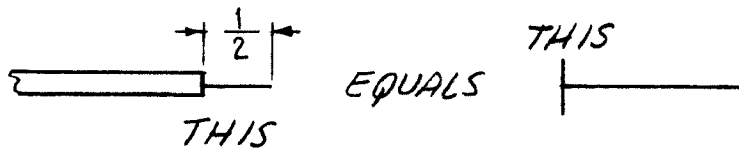
CA-667 A

THE CONTENTS OF THIS DRAWING ARE THE EXCLUSIVE PROPERTY OF THE TECHNICAL MATERIEL CORP. ITS UNAUTHORIZED USE OR REPRODUCTION IN WHOLE OR IN PART IS STRICTLY FORBIDDEN.

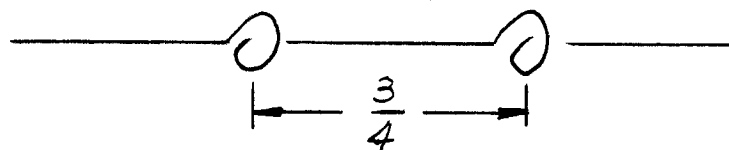
NOTE:
WHEN RE-ASSEMBLING, MALE GUIDE PIN IS TO BE LOCATED BETWEEN PINS "M" & "L".



THIS SYMBOL DENOTES END OF INSULATION & NAIL DRIVING POINT. WIRE MUST BE STRIPPED 1/2" BEYOND THIS POINT & TINNED 3/8", UNLESS OTHERWISE SPECIFIED.



WIRES SHOULD BE PLACED IN CABLE IN NUMERICAL SEQUENCE AS THEY APPEAR IN ITEM COLUMN. SPACE LACING APPROX. 3/4" APART.



SYMBOL NOTES -

- DENOTES ITEM N^oS.
- ▲ DENOTES PIN N^oS.

NOTICE TO PERSONS RECEIVING THIS DRAWING

THE TECHNICAL MATERIEL CORPORATION claims proprietary right in the material disclosed hereon. This drawing is issued in confidence for engineering information only and may not be reproduced or used to manufacture anything shown hereon without permission from THE TECHNICAL MATERIEL CORPORATION to the user. This drawing is loaned for mutual assistance and is subject to recall at any time.

Property of:

THE TECHNICAL MATERIEL CORPORATION
MAMARONECK, NEW YORK

3/8"	12	PX-100-1-.085	SLEEVING, INSULATION	BLACK
1"	11	TS-157	SOCKET, EL TUBE	XDS3001
X	10	BS-100	SOLDER, SOFT	
X	9	CD-101-MW	CORD, LACING	BLACK
11"	8	MWC24(7) U9	WIRE, ELECTRICAL	WHITE
11"	7	U8		GREY
8 1/4"	6	U92		WHT/RED
8 1/4"	5	U0		BLK
8 1/4"	4	U3		OR.
8 1/4"	3	U2		RED
8 1/4"	2	MWC 24(7)U1	WIRE, ELECTRICAL	BRN.
1"	1	PL-225-3P	CONNECTOR, PLUG, 11 PIN	P3001

REQ.	ITEM	PART NO.	J. STRUMMER	DESCRIPTION	SYMBOL
THE TECHNICAL MATERIEL CORP. MAMARONECK, NEW YORK					
CABLE, DIGITAL READOUT INDICATOR (7 WIRE)					
DRAWN: <i>as</i> CHECKED: <i>DM</i> FINAL APPROVAL: <i>as</i>					
TYPE & TEMPER		HEAT TREAT. SPEC.		DRAWN: <i>JMA</i> CHECKED: <i>JMA</i> FINAL APPROVAL: <i>as</i>	
FINISH & SPEC. NO. CA-667 A					

A	REV. DESCRIPTION IT. 11	8/24/72	70797	GE	EG	EG
SYM	DESCRIPTION	DATE	CH. NO.	DRAFTS	CHECKER	ENG. APP.
UNLESS OTHERWISE SPECIFIED:						
DIMENSIONS ARE IN INCHES						
TOLERANCES ON FRACTIONS ± 1/64 DECIMALS ± .005 ANGLES ± 1/2°						
SCALE: MAXIMUM ALLOWABLE TOLERANCES HAVE BEEN DETERMINED AND ANY DEVIATIONS WILL BE CAUSE FOR REJECTION. REMOVE ALL BURRS AND SHARP EDGES						
1 HFS-1 B-15-62						
REQ. PER UNIT	MODEL	SECTION	ASS'Y. NO.	DATE	USED ON	