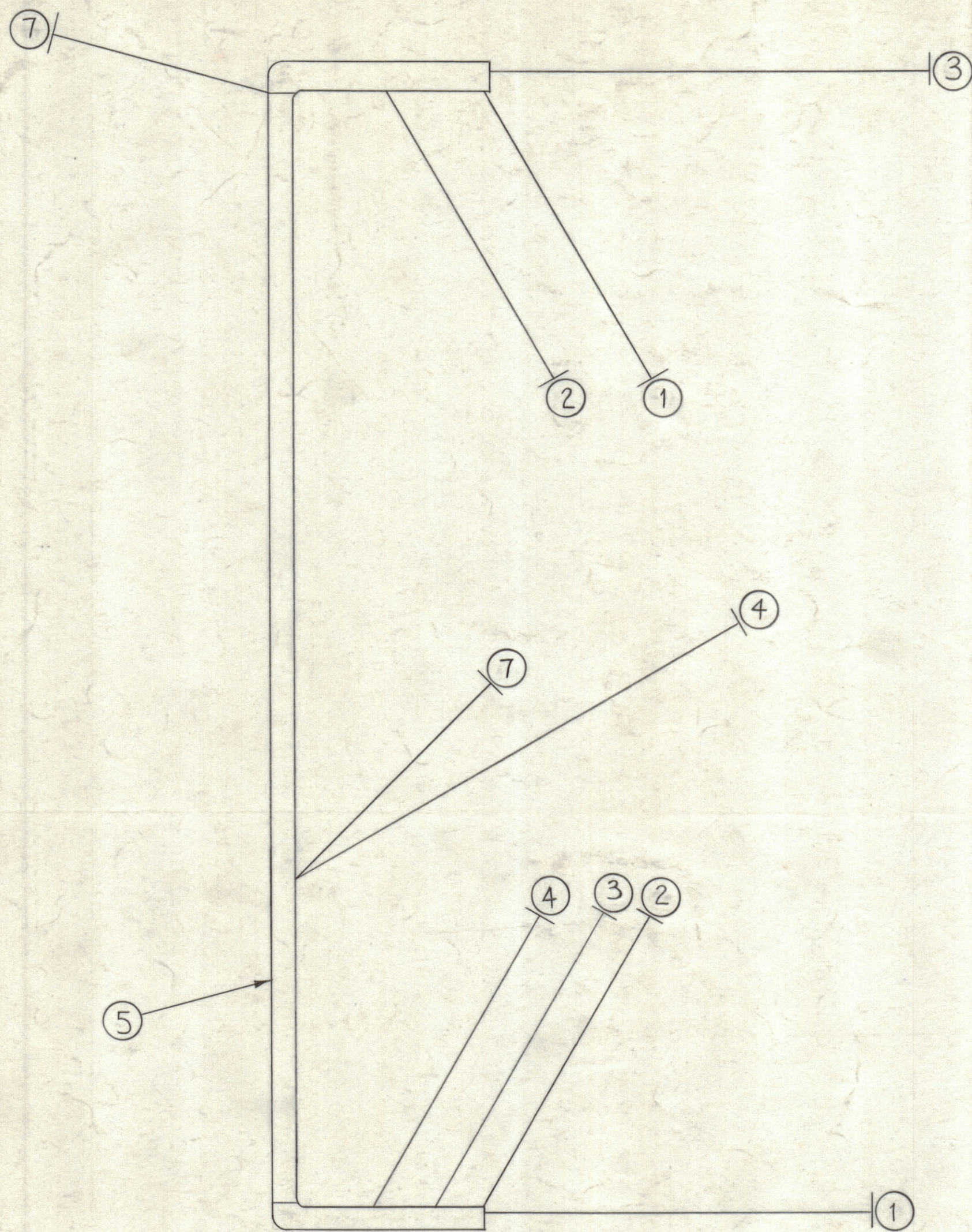


NOTICE TO PERSONS RECEIVING THIS DRAWING  
 THE TECHNICAL MATERIEL CORPORATION claims proprietary right in the material disclosed hereon. This drawing is issued in confidence for engineering information only and may not be reproduced or used to manufacture anything shown hereon without permission from THE TECHNICAL MATERIEL CORPORATION to the user. This drawing is loaned for mutual assistance and is subject to recall at any time.  
 Property of  
 THE TECHNICAL MATERIEL CORPORATION  
 MAMARONECK, NEW YORK



REQ.	ITEM	PART NO.	DESCRIPTION	SYMBOL
	7	MWC 22(7)U96	CABLE, INSULATED	WH/BLUE
	6	CD-101-1 MW	CORD LACING	BLACK
934	5	PX-100-1-.186	SLEEVING, INSULATED	BLACK
	4	MWC 22(7)U6	CABLE, INSULATED	BLUE
	3	MWC 22(7)U92	↑ ↑	WH/RED
	2	MWC 22(7)U98	↓ ↓	WH/GREY
	1	MWC 22(7)U2	CABLE, INSULATED	RED

REQ.	ITEM	PART NO.	DESCRIPTION	SYMBOL
THE TECHNICAL MATERIEL CORP. MAMARONECK, NEW YORK				
CABLE SYNTHESIZER				
DRAWN: <i>M.A.F.</i> CHECKED: <i>J.H.B.</i> FINAL APPROVAL: <i>[Signature]</i>				
TYPE & TEMPER HEAT TREAT. SPEC.				
FINISH & SPEC. NO.				
ELEC. DES. APP. MECH. DES. APP. SHEET OF				
82. CA-619				

SYM	ZONE	DESCRIPTION	DATE	CH. NO.	DRAFTS	CHECKER	ENG. APP.
UNLESS OTHERWISE SPECIFIED:			SCALE				
DIMENSIONS ARE IN INCHES			MAXIMUM ALLOWABLE TOLERANCES HAVE BEEN DETERMINED AND ANY DEVIATIONS WILL BE CAUSE FOR REJECTION. REMOVE ALL BURRS & SHARP EDGES				
TOLERANCES ON FRACTIONS ± 1/64 DECIMALS ± .005 ANGLES ± 1/2°							

REQ. PER UNIT	MODEL	SECTION	ASS'Y. NO.	DATE
1	CHG-2	MAIN		6-5-61
USED ON				