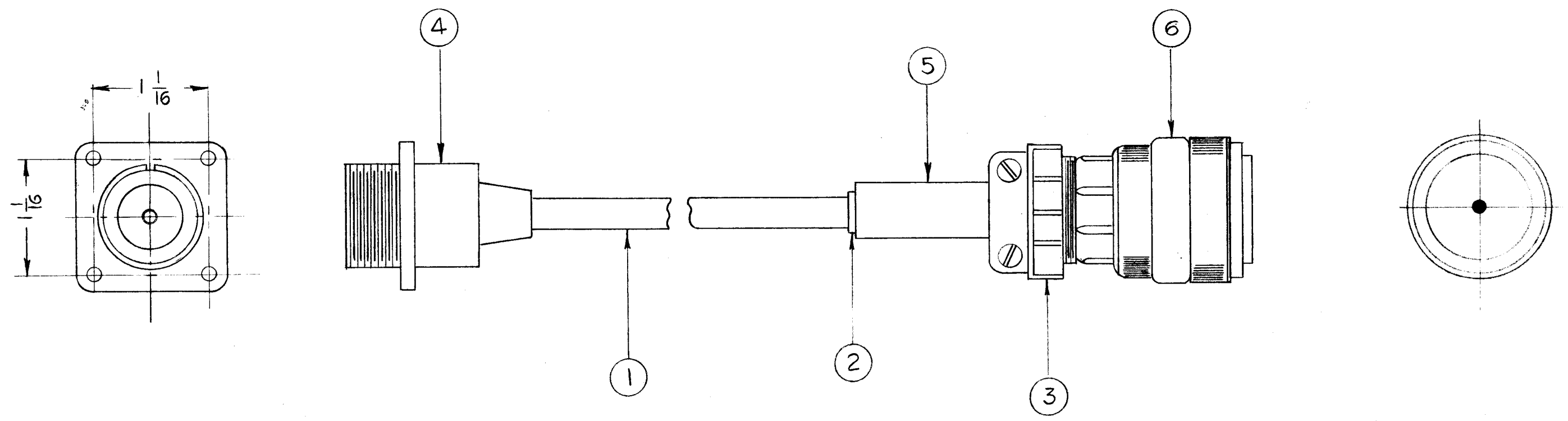


CA-594



**NOTICE TO PERSONS RECEIVING THIS DRAWING**

THE TECHNICAL MATERIEL CORPORATION claims proprietary right in the material disclosed hereon. This drawing is issued in confidence for engineering information only and may not be reproduced or used to manufacture anything shown hereon without permission from THE TECHNICAL MATERIEL CORPORATION to the user. This drawing is loaned for mutual assistance and is subject to recall at any time.

Property of:  
**THE TECHNICAL MATERIEL CORPORATION**  
 MAMARONECK, NEW YORK

1	6	MS3106B 18-16P	CONNECTORS, ELECT. PLUG..	
1	5	MS3420-8A	BUSHING CABLE, ADAPT. TELE.	
1	4	MS3102A 18-16S	FEMALE RECEPTACLE..	
1	3	MS3057-10	ADAPTER, ELECT. ACC. TO CABLE	
1	2	MS3420-6A	BUSHING, GABLE ADAPT. TELE.	
86"	1	WI-131	HIGH VOLTAGE WIRE	
REQ.	ITEM	PART NO.	DESCRIPTION	SYMBOL
STOCK SIZE			THE TECHNICAL MATERIEL CORP. MAMARONECK, NEW YORK	
MATERIAL			CABLE, ASS'Y HIGH VOLTAGE	
TYPE & TEMPER		HEAT TREAT. SPEC.	DRAWN	CHECKER
FINISH & SPEC. NO.		ELEC. DES. APP.	MECH. DES. APP.	FINAL APPROVAL
				CA-594

SYM	DESCRIPTION	DATE	CH. NO.	DRAFTS	CHECKER	ENG. APP.
UNLESS OTHERWISE SPECIFIED:		SCALE:				
DIMENSIONS ARE IN INCHES		MAXIMUM ALLOWABLE TOLERANCES HAVE BEEN DETERMINED AND ANY DEVIATIONS WILL BE CAUSE FOR REJECTION. REMOVE ALL BURRS AND SHARP EDGES				
TOLERANCES ON FRACTIONS ± 1/64 DECIMALS ± .005 ANGLES ± 1/2°						

1	SBT- IKE			1-4-61
REQ. PER UNIT	MODEL	SECTION	ASSY. NO.	DATE
USED ON				