

NOTICE TO PERSONS RECEIVING THIS DRAWING
 THE TECHNICAL MATERIEL CORPORATION claims proprietary right in the material disclosed hereon. This drawing is issued in confidence for engineering information only and may not be reproduced or used to manufacture anything shown hereon without permission from THE TECHNICAL MATERIEL CORPORATION to the user. This drawing is loaned for mutual assistance and is subject to recall at any time.

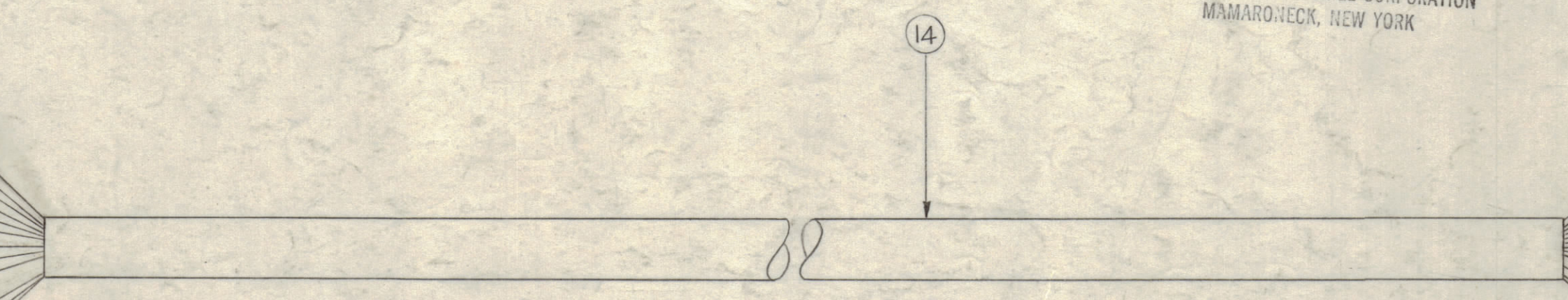
Property of:
 THE TECHNICAL MATERIEL CORPORATION
 MAMARONECK, NEW YORK

16
 MS 3106 B20-27P
 PIN NO'S

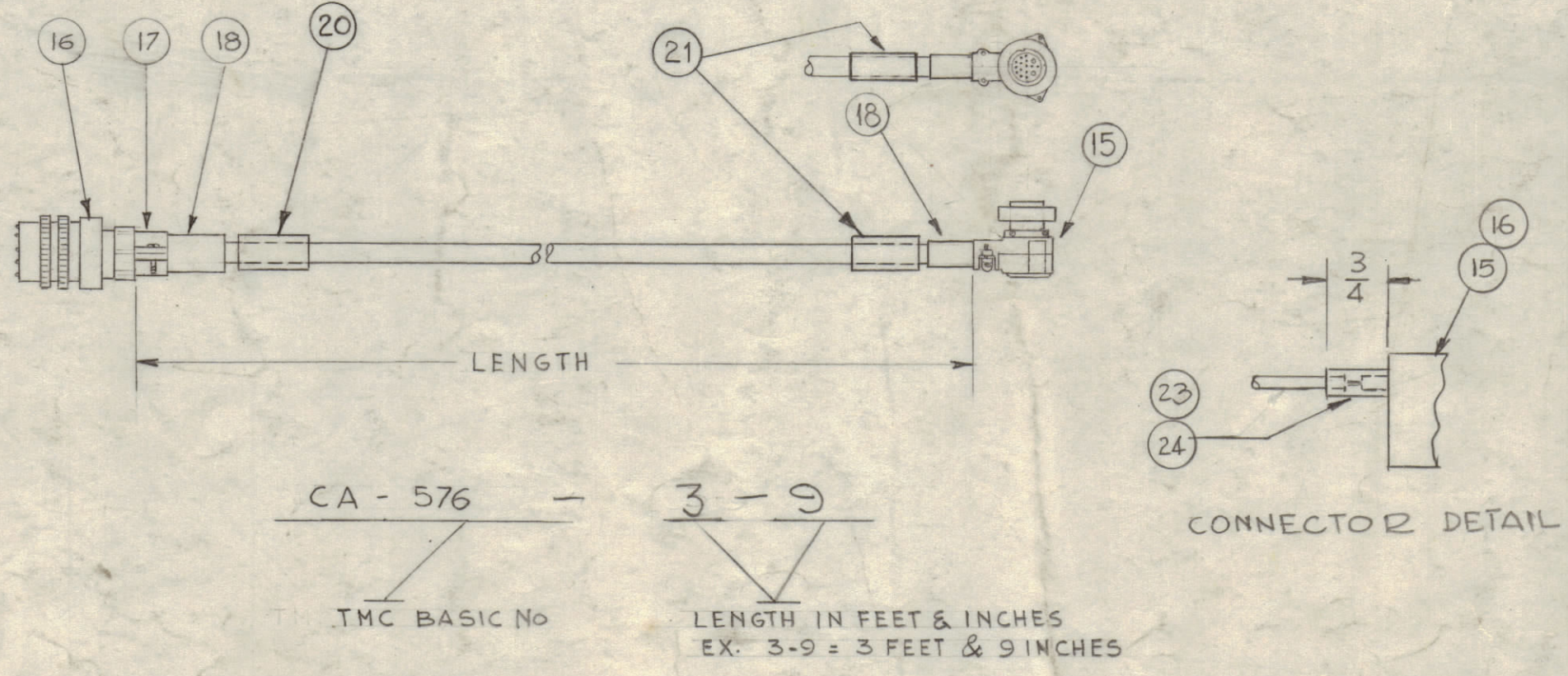
- ① A
- ② B
- ③ C
- ④ D
- ⑤ E
- ⑥ F
- ⑦ G
- ⑧ H
- ⑩ J
- K
- ⑪ L
- ⑫ M
- ⑬ N

15
 PL - 186
 PIN NO'S

- 15 — ①
- 11 — ②
- 12 — ③
- 7 — ④
- 3 — ⑤
- 1 — ⑥
- 4 — ⑦
- 8 — ⑧
- 13 — ⑩
- 6 — ⑪
- 2 — ⑫
- 5 — ⑬



TMC PART NO.	LENGTH	USED ON	MODEL	ITEM 20	ITEM 21
CA-576-8-5	8ft. 5IN.	RAK-11,20	SBG	LA-107-16-P402	LA-107-16-P2707
CA-576-6-0	6ft. 0IN.	AX-239	GPT-10K	LA-107-16-P402	LA-107-16-P2707



REQ.	ITEM	PART NO.	DESCRIPTION	SYMBOL
X	24	PX100-1-106	INSULATION, SLEEVING,	
X	23	PX100-1-148	INSULATION, SLEEVING	
	22	DELETED		
1	21	SEE CHART	SLEEVING LETTERED, WIRE MARKER	SEE CHART
1	20	SEE CHART	SLEEVING, LETTERED, WIRE MARKER	SEE CHART
X	19	BS 100	SOLDER, SOFT	
2	18	MS 3420-10A	BUSHING, CABLE	
1	17	MS 3057-12A	CLAMP, CABLE	
1	16	MS 3106 B20-27P	CONNECTOR, PLUG, MALE	
1	15	PL 186	CONNECTOR, PLUG, FEMALE	
	14	PX 100-1-438	INSULATION, SLEEVING	BIK
	13	MWC 16 (19) U-93	CABLE, INSULATED	WHITE ORANGE
	12	MWC 18 (16) U-94	CABLE, INSULATED	WHITE YELLOW
	11	MWC 18 (16) U-0	CABLE, INSULATED	BIK
	10	MWC 16 (19) U-6		BLUE
	9	NOT USED		
	8	MWC 22 (7) U-2		RED
	7	MWC 22 (7) U-92		PINK
	6	MWC 16 (19) U-9		WHITE
	5	MWC 18 (16) U-8		GREY
	4	MWC 18 (16) U-7		VIOLET
	3	MWC 16 (19) U-90		WHITE BLACK
	2	MWC 16 (19) U-91		WHITE BRN.
	1	MWC 16 (19) U-1	CABLE, INSULATED	BRN.

SYM	ZONE	DESCRIPTION	DATE	CH. NO.	DRAFTS	CHECKER	ENG. APP.
F		ON IT. 21 P2707 WAS 113 IT. 17 WAS MS3057-12, ON IT. 20 P402 WAS 114	3-16-67	17979			
E	+	ITEM 23 & 24 ADDED, CONNECTOR DETAIL ADDED ITEM 22 DELETED. ITEM 7 WAS MWC 22(7) U-PINK	7-5-66	16492			
D	+	ITEM 22 ADDED ITEMS 20 AND 21 WERE LA105-24	4-1-64	11158			
C	E1	(ON PART NO. CHART (Item 21 Column) LA-105-24-Z707 WAS LA-105-24-110)	7-26-64	4971			
B	D516	ITEM 20 & 21 ADDED	2-7-61	4092			
A	ZE	Part No. Chart Added.	1/25/61	3987			
	3D	quantity of Item 17 was (2).					

UNLESS OTHERWISE SPECIFIED:
 DIMENSIONS ARE IN INCHES
 TOLERANCES ON FRACTIONS ± 1/64 DECIMALS ± .005 ANGLES ± 1/2°
 MAXIMUM ALLOWABLE TOLERANCES HAVE BEEN DETERMINED AND ANY DEVIATIONS WILL BE CAUSE FOR REJECTION. REMOVE ALL BURRS & SHARP EDGES

REQ. PER UNIT	MODEL	SECTION	ASS'Y. NO.	DATE
1	CHG-2		RAK-11,20	12-19-61
1	CHG-1		AX-239	11-1-1960

REQ.	ITEM	PART NO.	DESCRIPTION	SYMBOL
THE TECHNICAL MATERIEL CORP. MAMARONECK, NEW YORK				
CABLE, POWER				
DRAWN		CHECKED		FINAL APPROVAL
TYPE & TEMPER		HEAT TREAT. SPEC.		
FINISH & SPEC. NO.		ELEC. DES. APP.		MECH. DES. APP.
		SHEET		OF