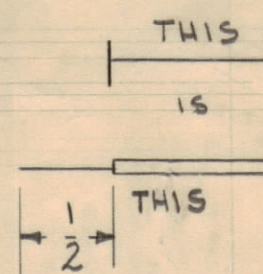


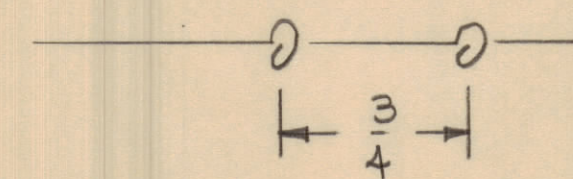
NOTES:

THIS SYMBOL DENOTE END OF INSULATION & NAIL DRIVING POINT. WIRE MUST BE STRIPPED 1/2" BEYOND THIS POINT & TINNED 3/8" UNLESS OTHERWISE SPECIFIED.

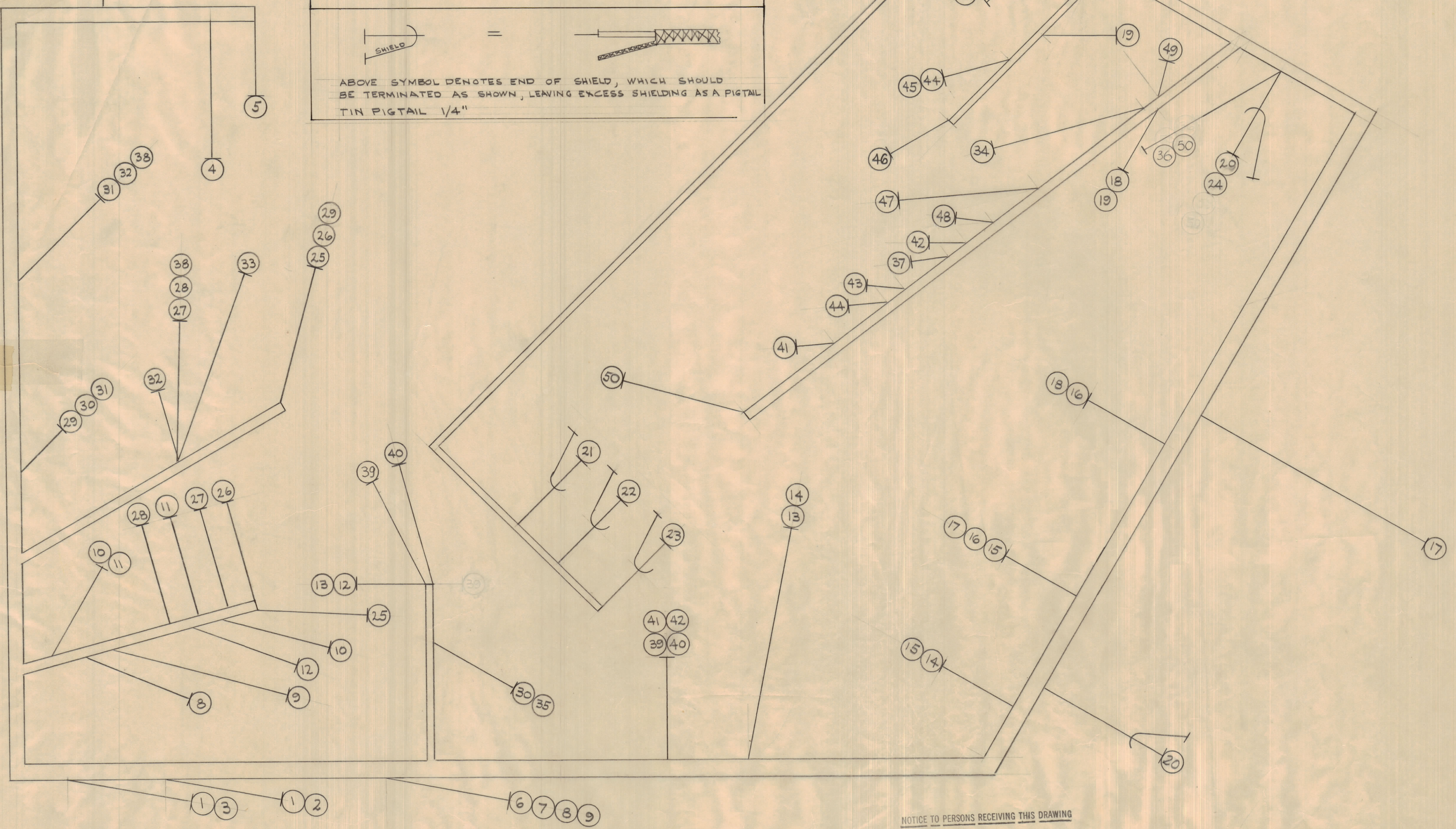


WIRES SHOULD BE PLACED IN CABLE IN NUMERICAL SEQUENCE AS THEY APPEAR IN ITEM COLUMN.

SPACE LACING APPROX. 3/4" APART.



ABOVE SYMBOL DENOTES END OF SHIELD, WHICH SHOULD BE TERMINATED AS SHOWN, LEAVING EXCESS SHIELDING AS A PIGTAIL 1/4"



REQ. ITEM	PART NO.	DESCRIPTION	SYMBOL
55			
54			
53			
X 52	BS-100	SOLDER, SOFT	
X 51	CD-101-1MW	CORD, LACING	
50	MWC 24(7)U96	CABLE, INSULATED	WH/BLUE
49	94		WH/YELLOW
48	4		YELLOW W
47	95		WH/GREEN
46	90		WH/BLACK
45	98		WH/BLACK
44	9		WH/BLACK
43	6		WH/BLACK
42	PINK		PINK
41	97		WH/VIOLET
40	PINK		PINK
39	7		VIOLET
38	7		VIOLET
37	2		RED
36	2		RED
35	2		RED
34	92		WH/RED
33	92		WH/RED
32	PINK		PINK
31	2		RED
30	2		RED
29	MWC 24(7)U94		WH/YELLOW
28	MWC 22(7)U96		WH/BLUE
27	MWC 22(7)U 6		BLUE
26	MWC 20(7)U94		WH/YELL
25	MWC 20(7)U 4	CABLE, INSULATED	YELLOW
24	RG 174/U	CO-AXIAL CABLE	
23	RG 174/U		
22	RG 174/U		
21	RG 174/U		
20	RG 174/U	CO-AXIAL CABLE	
19	MWC 20(7)U 1	CABLE, INSULATED	BROWN
18			
17			
16			
15			
14			
13			
12	MWC 20(7)U 1		BROWN
11	MWC 22(7)U 0		BLACK
10	0		BLACK
9	9		WHITE
8	9		WHITE
7	98		WH/GREY
6	MWC 22(7)U 98		WH/GREY
5	MWC 24(7)U-9		WHITE
4	MWC 24(7)U-9		WHITE
3	MWC 22(7)U-8		GREY
2	MWC 22(7)U-8		GREY
1	MWC 22(7)U-8	CABLE INSULATED	GREY

ISSUE NO.	DESCRIPTION	DATE	CH. NO.	DRAFTS	CHECKER	ENG. APP.
A	1 1/2" ADDED #38 LEAD.	7-25-63	3888	106	JCB	JCB
B	1" ADDED TO LEADS	9/28/60				
C	ITEM 28 WAS MWC 22(7)U 6					
D	ITEM 26 WAS MWC 20(7)U 4					

NOTICE TO PERSONS RECEIVING THIS DRAWING
 THE TECHNICAL MATERIEL CORPORATION claims proprietary right in the material disclosed herein. This drawing is issued in confidence for engineering information only and may not be reproduced or used to manufacture anything shown hereon without permission from THE TECHNICAL MATERIEL CORPORATION to the user. This drawing is loaned for mutual assistance and is subject to recall at any time.
 Property of:
 THE TECHNICAL MATERIEL CORPORATION
 MAMARONECK, NEW YORK

REQ. PER UNIT	MODEL	SECTION	ASSY. NO.	DATE
1	DVM-4			2-6-62
1	DVM-2			7-21-60

THE TECHNICAL MATERIEL CORP. MAMARONECK, NEW YORK			
CABLE, MAIN			
TYPE & TEMPER	HEAT TREAT SPEC.	FINISH & SPEC. NO.	
		CA-558 B	