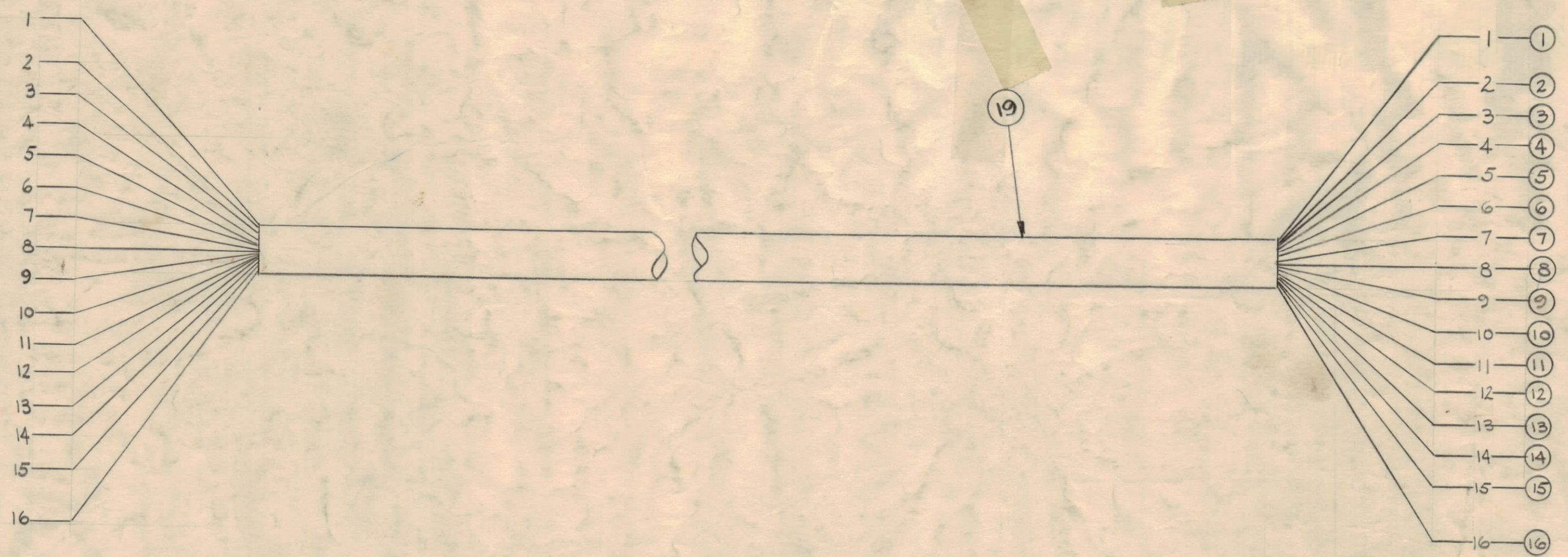


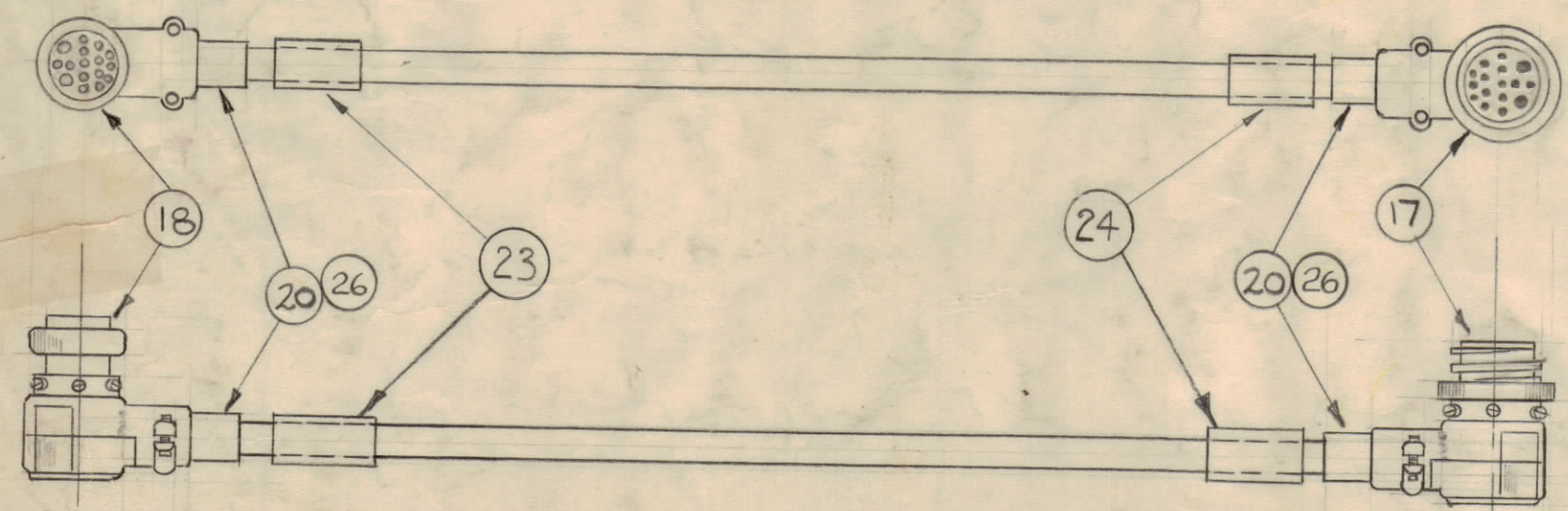
**NOTICE TO PERSONS RECEIVING THIS DRAWING**  
 THE TECHNICAL MATERIEL CORPORATION claims proprietary right in the material disclosed herein. This drawing is issued in confidence for engineering information only and may not be reproduced or used to manufacture anything shown herein without permission from THE TECHNICAL MATERIEL CORPORATION to the user. This drawing is loaned for mutual assistance and is subject to recall at any time.

Property of:  
 THE TECHNICAL MATERIEL CORPORATION  
 MAMARONECK, NEW YORK

ITEM 17  
 (PL-187)  
 PIN NO'S

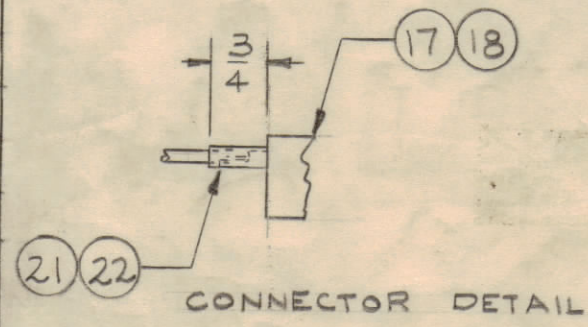


ITEM 18  
 (PL-186)  
 PIN NO'S



NOTE - FOR TOTAL WIRE LENGTHS, ADD 3" TO LENGTHS SHOWN

|    |                  |              |   |           |
|----|------------------|--------------|---|-----------|
| 2  | 26               | MS3420-12A   | BUSHING, CABLE                            |           |
| X  | 25               | BS-100       | SOLDER, TIN ALLOY                         |           |
| 1  | 24               | SEE CHART    | SLEEVING LETTERED WIRE MARKER (SEE CHART) |           |
| 1  | 23               | SEE CHART    | SLEEVING LETTERED WIRE MARKER (SEE CHART) |           |
|    | 22               | PX-100-1-106 | INSULATION, SLEEVING                      |           |
|    | 21               | PX-100-1-148 | INSULATION, SLEEVING                      |           |
| 2  | 20               | MS-3420-8A   | BUSHING, CABLE                            |           |
|    | 19               | See Chart    | INSULATION, SLEEVING                      | See Chart |
| 1  | 18               | PL-186       | CONNECTOR, PLUG FEMALE                    |           |
| 1  | 17               | PL-187       | CONNECTOR, PLUG MALE                      |           |
| 16 | MWC-22(7)U 2     |              | CABLE, INSULATED                          | RED       |
| 15 | MWC-16(19)U95    |              |   | WH. GREEN |
| 14 | MWC 22(7) U 91   |              |   | WH. BROWN |
| 13 | MWC 16 (19) U 5  |              |   | GRN.      |
| 12 | MWC 16 (19) U 94 |              |   | WH. YEL.  |
| 11 | MWC 22(7) U 4    |              |   | YELLOW    |
| 10 | ↑ 97             |              |   | WH VIOLET |
| 9  | ↓ 7              |              |   | VIOLET    |
| 8  | MWC 22(7) U 92   |              |   | WH. RED   |
| 7  | MWC 16(19)U 3    |              |   | ORANGE    |
| 6  | MWC 22(7) U 93   |              |   | WH ORANGE |
| 5  | ↑ 96             |              |   | WH. BLUE  |
| 4  | ↑ 6              |              |   | BLUE      |
| 3  | ↓ 0              |              |   | BLK.      |
| 2  | ↓ 90             |              |   | WH. BLK.  |
| 1  | MWC 22(7)U 1     |              | CABLE INSULATED                           | BROWN     |



| FROM  | TO  | LENGTH  |           | ITEM 19     | COLOR  | USED ON   | TMC PART NO. | USE WIRE MARKER |               |
|-------|-----|---------|-----------|-------------|--------|-----------|--------------|-----------------|---------------|
|       |     | IN FEET | IN INCHES |             |        |           |              | ITEM 23         | ITEM 24       |
| CPP-2 | CHL | 7'-3"   | 87"       | PX100-1-438 | Black  | RAK-11,20 | CA-551-1     | LA107-16-P101   | LA107-16-P503 |
| CPP-2 | CLL | 8'-0"   | 96"       | PX100-4-438 | Yellow | RAK-11,20 | CA-551-2     | LA107-16-P706   | LA107-16-P501 |
| CPP-2 | CMD | 9'-0"   | 108"      | PX100-3-438 | Orange | RAK-11,20 | CA-551-3     | LA107-16-P304   | LA107-16-P502 |
| CPP-2 | CHL | 7'-0"   | 84"       | PX100-1-438 | Black  | AX-239    | CA-551-4     | LA107-16-P101   | LA107-16-P503 |
| CPP-2 | CLL | 8'-5"   | 101"      | PX100-4-438 | Yellow | AX-239    | CA-551-5     | LA107-16-P706   | LA107-16-P501 |
| CPP-2 | CMD | 9'-5"   | 113"      | PX100-3-438 | Orange | AX-239    | CA-551-6     | LA107-16-P304   | LA107-16-P502 |
| CPP-2 | CHL | 9'-5"   | 113"      | PX100-1-438 | BLACK  | AX-       | CA-551-7     | LA107-16-P101   | LA107-16-P503 |

|   |  |         |        |         |           |  |
|---|--|---------|--------|---------|-----------|--|
| IT. 23 & 24 REVISED   | 3-16-67  | 17979   |        |         |           |  |
| IT. 26 ADDED TO B/M & PICT. CA-551-7 ADD TO CHART, IT 20 WAS MS3420-10A | 8-6-64   | 12066   |        |         |           |  |
| ITEM 25 ADDED, CHART REVISED ITEMS 23 & 24 WERE LA105-24                | 4-1-64   | 11158   | A.M.   |         |           |  |
| DESCRIPTION   | DATE   | CH. NO. | DRAFTS | CHECKER | ENG. APP. |  |
| TOLERANCES  | SCALE:   |         |        |         |           |  |
|   | MAXIMUM ALLOWABLE TOLERANCES HAVE BEEN DETERMINED AND ANY DEVIATIONS WILL BE CAUSE FOR REJECTION. REMOVE ALL BURRS AND SHARP EDGES |         |        |         |           |  |

STANDARD DRAWING

|              |           |         |           |         |  |
|--------------|-----------|---------|-----------|---------|--|
| SEE CHART    | AX-239    |         |           |         |  |
| SEE CHART    | RAK-11,20 |         |           |         |  |
| REQ PER UNIT | MODEL     | SECTION | ASSY. NO. | DATE    |  |
|              |           |         |           | 5-31-60 |  |

|   |          |                 |                 |
|---|----------|-----------------|-----------------|
| REQ. ITEM   | PART NO. | DESCRIPTION     | SYMBOL          |
| THE TECHNICAL MATERIEL CORP. MAMARONECK, NEW YORK |          |                 |                 |
| CABLE POWER                                       |          |                 |                 |
| MATERIAL  |          |                 |                 |
| TYPE & TEMPER                                     |          |                 |                 |
| HEAT TREAT. SPEC.                                 |          |                 |                 |
| FINISH & SPEC. NO.                                |          |                 |                 |
| DRAWN   |          | ELEC. DES. APP. | MECH. DES. APP. |
| CHECKED   |          | FINAL APPROVAL  |                 |
| CA 551 G  |          |                 |                 |