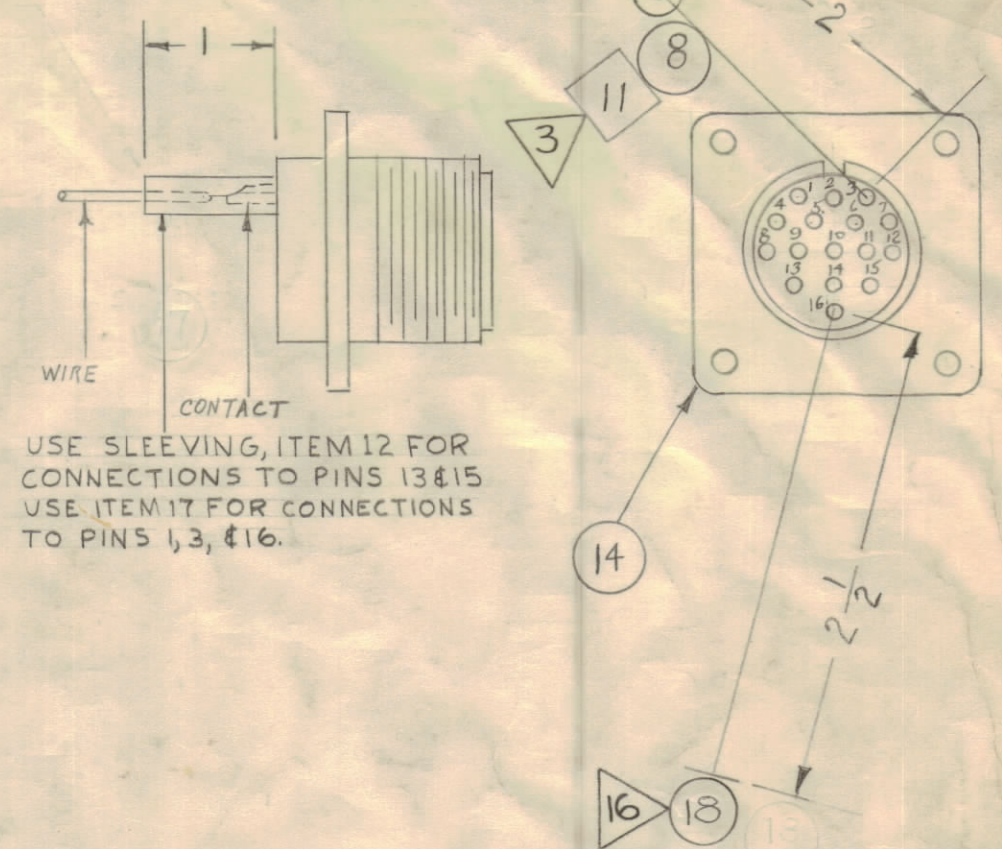
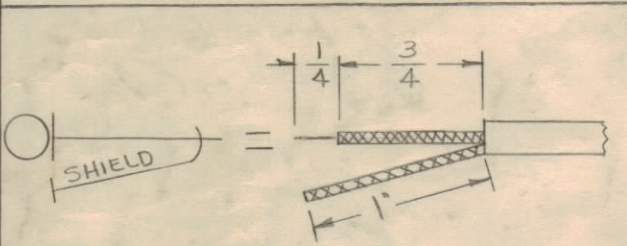
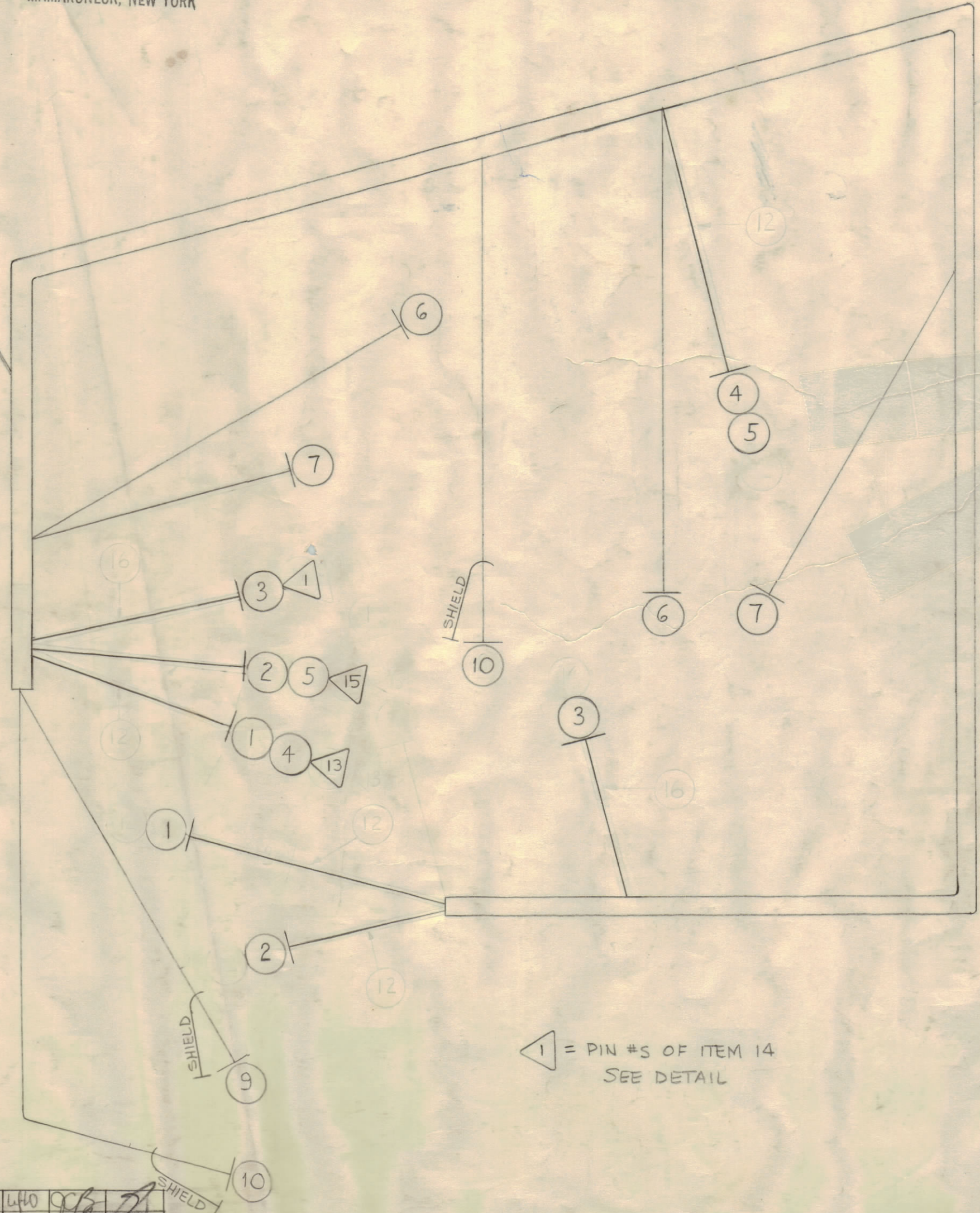


**NOTICE TO PERSONS RECEIVING THIS DRAWING**  
 THE TECHNICAL MATERIEL CORPORATION claims proprietary right in the material disclosed hereon. This drawing is issued in confidence for engineering information only and may not be reproduced or used to manufacture anything shown hereon without permission from THE TECHNICAL MATERIEL CORPORATION to the user. This drawing is loaned for mutual assistance and is subject to recall at any time.

Property of:  
**THE TECHNICAL MATERIEL CORPORATION**  
 MAMARONECK, NEW YORK



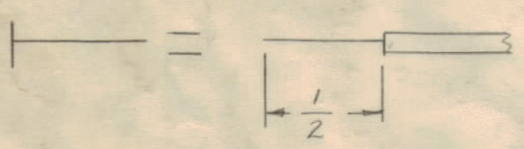
CONNECTOR WIRING DIAGRAM (ITEM 14)



ABOVE SYMBOL DENOTES PIGTAILED SHIELD.

NOTE:  
 TIE AT CORNERS AND BREAK POINTS.  
 TWIST ITEMS 1-2 & 3 } IN CABLE TRUNK ONLY  
 TWIST ITEMS 4-5 & 6 }

THIS SYMBOL DENOTES END OF INSULATION & NAIL DRIVING POINT. WIRE MUST BE STRIPPED 1/2" BEYOND THIS POINT & TINNED.



◁ = PIN #S OF ITEM 14  
 SEE DETAIL

4	18	MWC22(7)U2	CABLE, INSULATED	RED
X	17	PX100-1-106	SLEEVING, INSULATION	Black
		16	DELETED	
X	15	BS-100	SOLDER, SOFT	
1	14	JJ-183	CONNECTOR, RECEPTACLE	1101
X	13	CD-101-1-MW	CORD LACING	
		12	DELETED	
1	11	TE-104-1	LUG, TERMINAL	
		10	RG-174/U	CABLE, COAXIAL
		9	RG-174/U	CABLE, COAXIAL
3 1/2	8	MWC 22(7) U 0	CABLE, INSULATED	BLACK
		7		RED
		6		WH/GREY
		5		BROWN
		4		WH/BRN
		3		WH/GREY
		2		BROWN
		1	MWC 22(7) U 91	CABLE, INSULATED
REQ. ITEM		PART NO.	DESCRIPTION	SYMBOL

F	IT 17 DECIMAL DELE. IT 14 1101 ADDED	12.20.66	17534	LH0	SCB	2
E	DEL. IT. 12 & 16	3/28/66	16016	H/LA	SCB	2
D	DEL. SLEEVING FROM ITEMS 14, 2 & 5 ADDED SYMBOLS FOR PINS 3 & 16	1/20/64	10769		SCB	2
C	SYMBOL NOTES ADDED SHIELDS ADDED TO ITEMS 9, 10, 12	7-11-62	7339	BS.	SCB	2
B	ITEM 18 WAS ITEM 9 ITEM 18 ADDED ON BU, DWG CLARIFIED	10-2-61	5664	EF	SCB	2
A	ITEM 9 WAS 1 1/8" LONG NOW 4/8" LONG ITEM 14 WAS JJ-184	10-13-60	3184	MA	SCB	2
ISSUE ZONE	DESCRIPTION	DATE	CH. NO.	DRAFTS	CHECKER	ENG. APP.

TOLERANCES		SCALE:
DEC. DIM. ±	MAXIMUM ALLOWABLE TOLERANCES HAVE BEEN DETERMINED AND ANY DEVIATIONS WILL BE CAUSE FOR REJECTION.	
FRAC. DIM. ±	REMOVE ALL BURRS AND SHARP EDGES	
ANGULAR DIM. ±		

1	CHL-1	SECTION	ASS'Y. NO.	DATE
REQ PER UNIT	MODEL	SECTION	ASS'Y. NO.	DATE

THE TECHNICAL MATERIEL CORP. MAMARONECK, NEW YORK			
STOCK SIZE			
CABLE, FILAMENT			
MATERIAL			
TYPE & TEMPER			
DRAWN		ELEC. DES. APP.	
CHECKED		MECH. DES. APP.	
HEAT TREAT. SPEC.			
FINISH & SPEC. NO.			
CA-549 F			