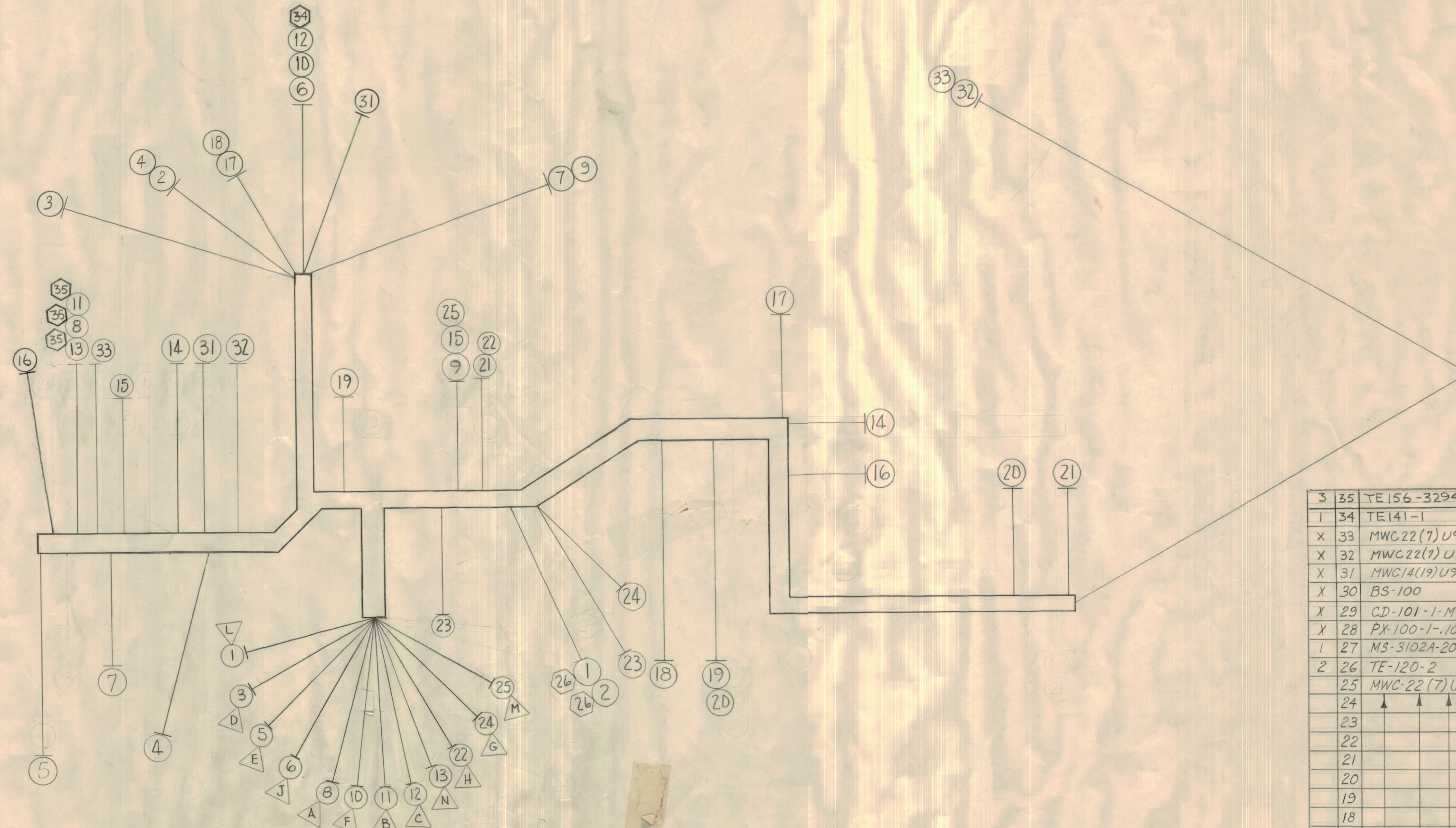
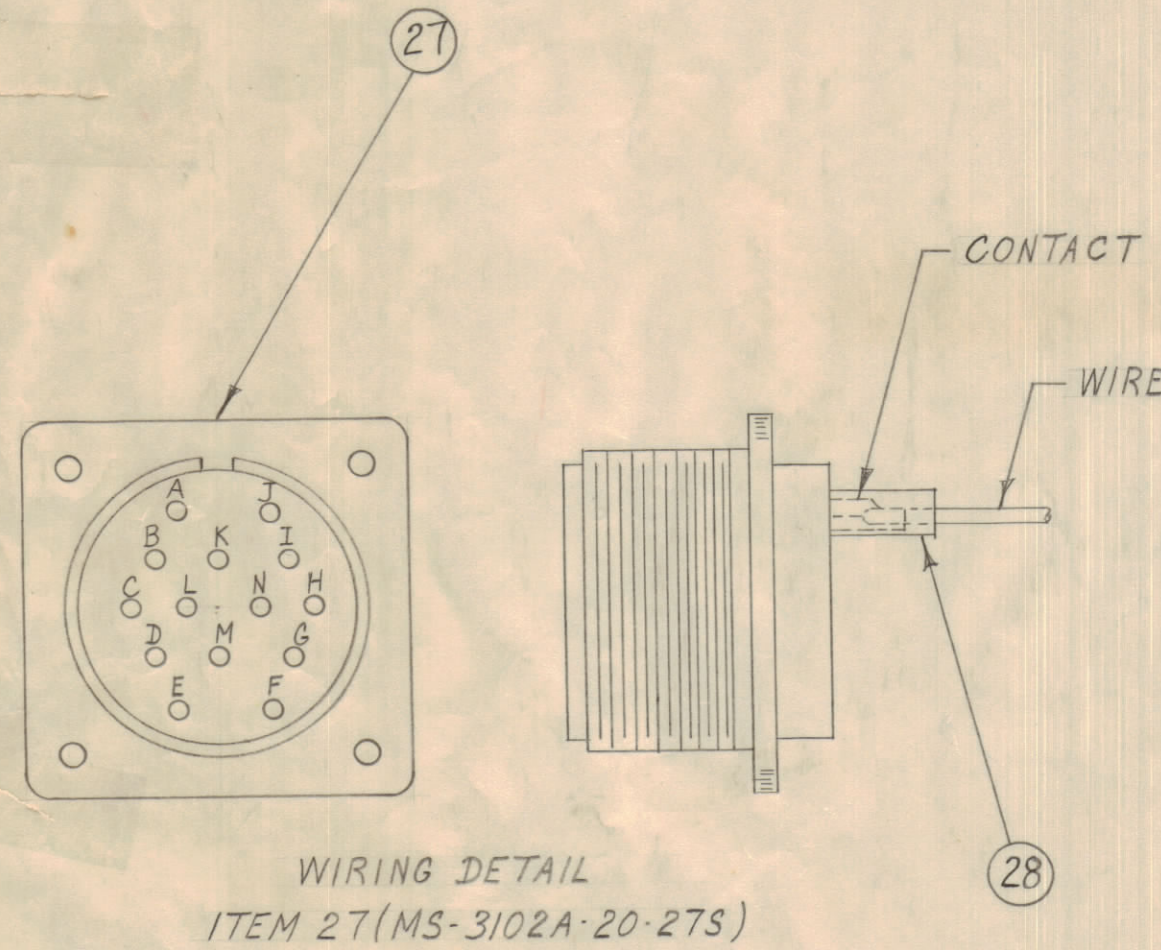


**NOTICE TO PERSONS RECEIVING THIS DRAWING**

THE TECHNICAL MATERIEL CORPORATION claims proprietary right in the material disclosed hereon. This drawing is issued in confidence for engineering information only and may not be reproduced or used to manufacture anything shown hereon without permission from THE TECHNICAL MATERIEL CORPORATION to the user. This drawing is loaned for mutual assistance and is subject to recall at any time.

Property of:

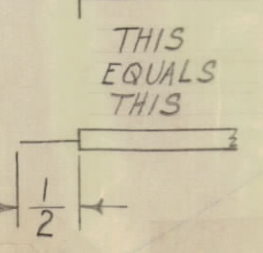
THE TECHNICAL MATERIEL CORPORATION  
MAMARONECK, NEW YORK



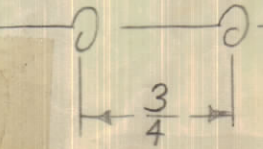
REQ. ITEM	PART NO.	DESCRIPTION	SYMBOL
3	35	TE156-32947	LUG, TERMINAL
1	34	TE141-1	LUG, TERMINAL
X	33	MWC22(7)U92	CABLE, INSULATED
X	32	MWC22(7)U2	CABLE, INSULATED
X	31	MWC14(19)U91	CABLE, INSULATED
X	30	BS-100	SOLDER, SOFT
X	29	CD-101-1-MW	CORD, LACING
X	28	PX-100-1-.106	INSULATION SLEEVING
1	27	MS-3102A-20-27S	CONNECTOR, RECEPTACLE
2	26	TE-120-2	SPADE, LUG
25	MWC-22(7)U0	CABLE, INSULATED	BLACK
24	↑	↑	GREEN
23	↑	↑	BLUE
22	↑	↑	BLUE
21	↑	↑	BLUE
20	↑	92	WH/RED
19	↑	93	WH/ORANGE
18	↑	94	White
17	↑	96	White
16	↑	92	Blue
15	↓	0	WH/RED
14	↓	0	BLACK
13	↓	95	RED
12	↑	94	WH/GREEN
11	↑	9	WH/YELLOW
10	↑	8	WHITE
9	↑	90	GREY
8	↑	90	WH/BLACK
7	↑	95	VIOLET
6	↑	6	WH/GREEN
5	↑	5	BLUE
4	↑	4	GREEN
3	↑	4	YELLOW
2	↑	3	ORANGE
1	↑	2	RED
1	MWC16(19)U1	CABLE, INSULATED	BROWN

ISSUE NO.	DESCRIPTION	DATE	CH. NO.	GRAFTS	CHECKER	ENG. APP.
F	ITEM 16 WAS U2 & SYM. WAS RED. ADD IT 34 & 35. CHGD IT 31	11-3-66	1717	RME		
E	ITEMS (1)(2)(3)(4)(5)(6)(7)(8)(9)(10)(11)(12)(13)(14) RELOCATED	10-30-62	7540			
D	ITEMS (15)(16)(17)(18)(19)(20)(21)(22)(23) RELOCATED	10-30-62				
C	ITEM 31 ADDED, ITEMS 6, 10 & 12 RELOCATED	7-31-62	6998	G.S.		
B	WIRE # 6, 8, 14 & 16 WERE LENGTHENED	3-28-61	4485	W.F.		
A	ITEM # 16 WAS MWC 22(7)U 2	10-26-60	3293	J.C.B.		
	Item No. 16, Color was yellow					
	Item No. 17, Color was orange					
	COMPLETELY REVISED	8-24-60	7			

THIS SYMBOL DENOTES END OF INSULATION & NAIL DRIVING POINT. WIRE MUST BE STRIPPED 1/2" BEYOND THIS POINT & TINNED 3/8" UNLESS OTHERWISE SPECIFIED.



WIRES SHOULD BE PLACED IN CABLE IN NUMERICAL SEQUENCE AS THEY APPEAR IN ITEM COLUMN. SPACE LACING APPROX. 3/4" APART.



REQ. PER UNIT	MODEL	SECTION	ABBY. NO.	DATE
1	CPP-5			3-28-61
1	CPP-1			8-19-60

THE TECHNICAL MATERIEL CORP. MAMARONECK, NEW YORK			
CABLE POWER SUPPLY			
STOCK SIZE			
MATERIAL			
TYPE & TEMPER			
HEAT TREAT SPEC.			
DRAWN	ELEC. DES. APP.	MECH. DES. APP.	
CHECKED			FINAL APPROVAL
			CA-545

CA-545

F

D

C

B

A