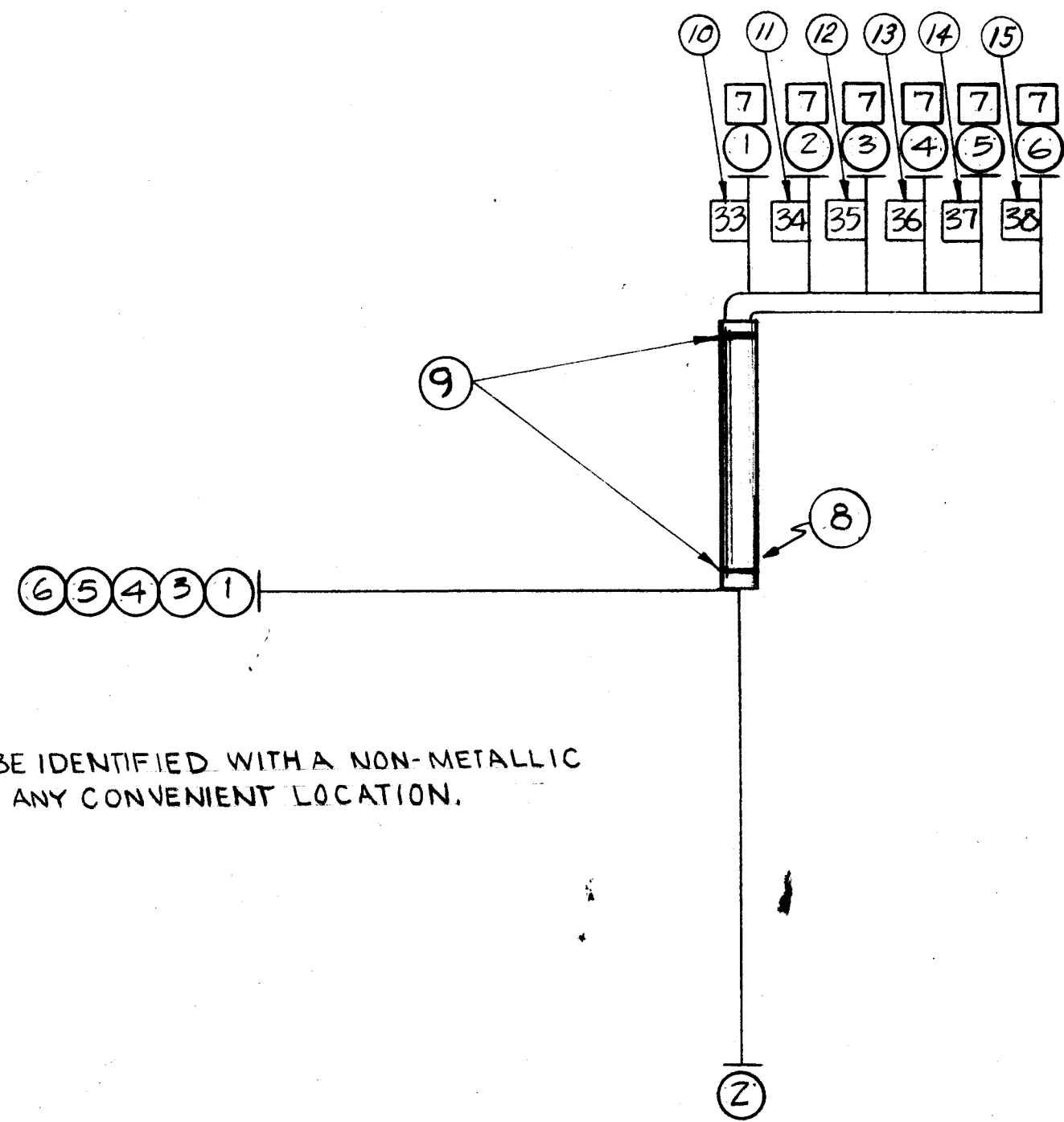


CA-527 B



NOTE:  
CABLE TO BE IDENTIFIED WITH A NON-METALLIC MARKER IN ANY CONVENIENT LOCATION.

**NOTICE TO PERSONS RECEIVING THIS DRAWING**

THE TECHNICAL MATERIEL CORPORATION claims proprietary right in the material disclosed hereon. This drawing is issued in confidence for engineering information only and may not be reproduced or used to manufacture anything shown hereon without permission from THE TECHNICAL MATERIEL CORPORATION to the user. This drawing is loaned for mutual assistance and is subject to recall at any time.

1	15	LA101-38	WIRE MARKER	
1	14	LA101-37		
1	13	LA101-36		
1	12	LA101-35		
1	11	LA101-34		
1	10	LA-101-33	WIRE MARKER	
	9	CD-101-1MW	CORD, LACING	
	8	PX-100-1-208	SLEEVING #4	
6	7	TE-120-2	SPADE, LUG	
	6	MWC22(7)U94	WIRE, ELECTRICAL, INSULATED	WH/YEL.
	5			YELLOW
	4			WHITE
	3			WH/BLK
	2			RED
	1	MWC22(7)U92	WIRE, ELECTRICAL, INSULATED	WH/RED
REQ. ITEM		PART NO.	DESCRIPTION	SYMBOL
<b>THE TECHNICAL MATERIEL CORP.</b>				
MAMARONECK. NEW YORK				
STOCK SIZE				
CABLE, BIAS (RL-126)				
MATERIAL				
		TYPE & TEMPER		HEAT TREAT. SPEC.
		DRAWN		CHECKED
		ELEC. DES. APP.		MECH. DES. APP.
		FINISH & SPEC. NO.		
		USED ON		
		GPT-40K		AR-120
		A-1833		2-23-60
		MODEL		PROJECT NO.
		ASS'Y. NO.		DATE
		REQ. PER UNIT		
		1		
		3-3-67		17876 L.A.K.
		10/30/63		10302
		CH. NO.		DRAFTS
		DATE		CHECKER
		ISSUE ITEM		ENG. APP.
		A 1		
		LACING & NOTE		
		ADDED TO PICTORIAL		
		ADDED ITEMS 11 TO 15.		
		ITEM 10 WAS LA-101		
		B		
		TOLERANCES		SCALE:
		DEC. DIM. ±		MAXIMUM ALLOWABLE TOLERANCES HAVE
		FRAC. DIM. ±		BEEN DETERMINED AND ANY DEVIATIONS
		ANGULAR DIM. ±		WILL BE CAUSE FOR REJECTION.
				REMOVE ALL BURRS AND SHARP EDGES
		DRAWN		FINAL APPROVAL
		Ema		CA-527 B