

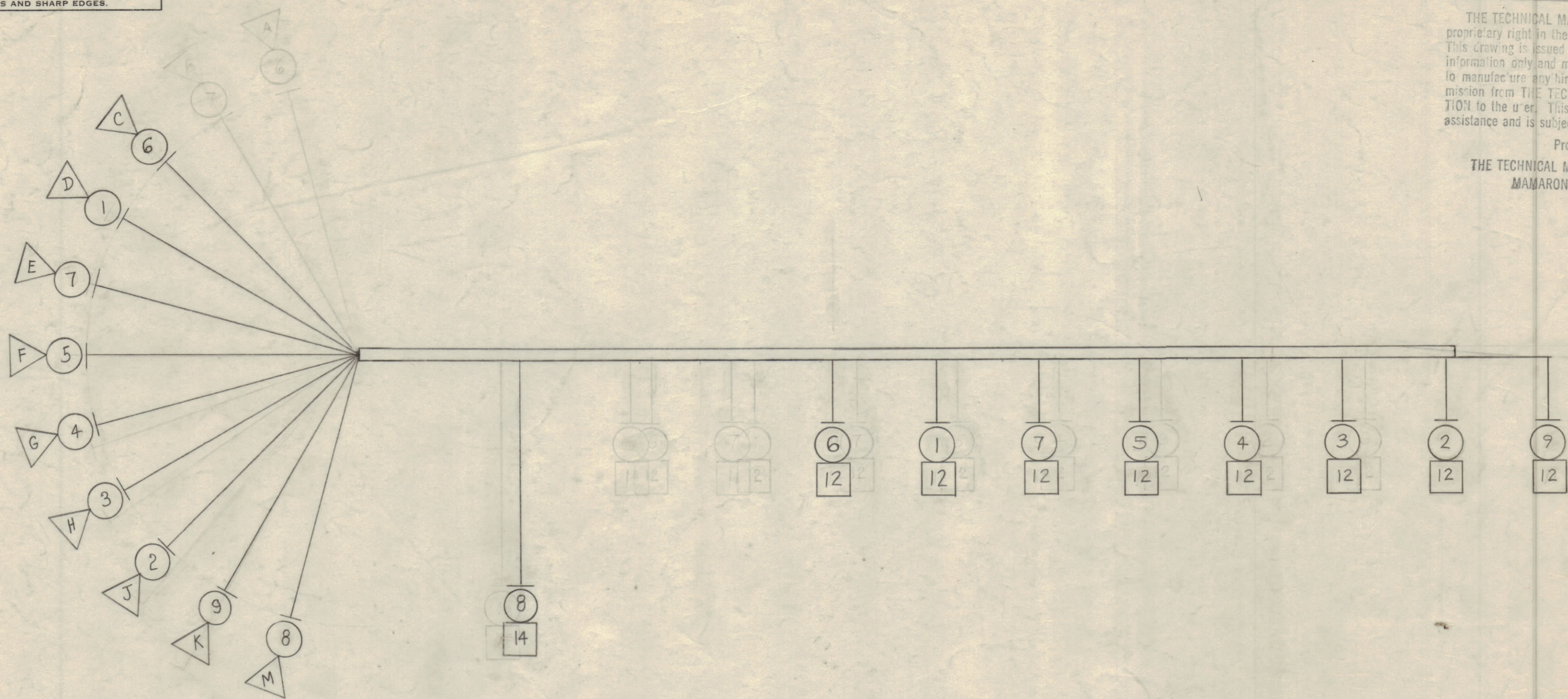
IF IT IS FOUND DESIRABLE TO CHANGE ANY TOLERANCE OR OTHER DETAIL SPECIFIED ON THIS DRAWING NOTIFY THE PURCHASER PROMPTLY.

MAXIMUM ALLOWABLE TOLERANCES HAVE BEEN DETERMINED AND DEVIATIONS WILL BE CAUSE FOR REJECTION. REMOVE ALL BURRS AND SHARP EDGES.

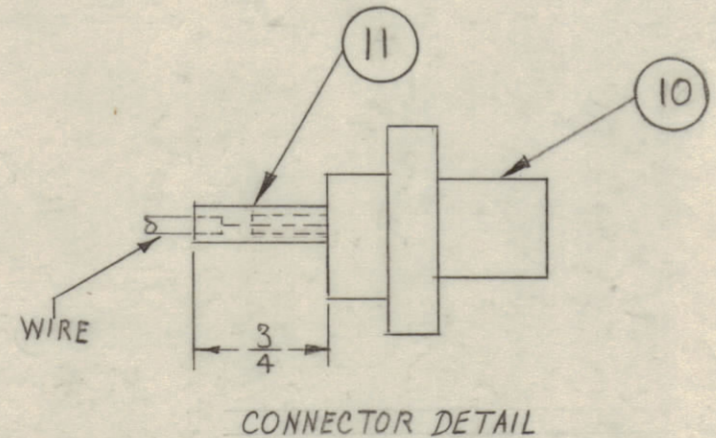
NOTICE TO PERSONS RECEIVING THIS DRAWING

THE TECHNICAL MATERIEL CORPORATION claims proprietary right in the material disclosed hereon. This drawing is issued in confidence for engineering information only and may not be reproduced or used to manufacture anything shown hereon without permission from THE TECHNICAL MATERIEL CORPORATION to the user. This drawing is loaned for mutual assistance and is subject to recall at any time.

Property of:
THE TECHNICAL MATERIEL CORPORATION
MAMARONECK, NEW YORK



CA-522



PART NO.	ITEM 10 CONNECTOR	REQ/UNIT
CA-522-1	MS-3102 A20-27S	1
CA-522-2	MS-3102 A20-27P	1

1	14	TE 104-Z	LOCK TYPE, GND LUG #6	
X	13	CD-101-1-MW	CORD LACING, NYLON, FLAT	
8	12	TE-156-3A148	LUG, SOLDERLESS	
X	11	PX-100-1-106	INSULATION, SLEEVING #10	BLACK
	10	SEE CHART	CONNECTOR	
	9	MWC 20(7) U6	CABLE INSULATED	BLUE
	8	MWC 22(7) U0	CABLE INSULATED	BLACK
	7			WH/YELL
	6			WH/BRN
	5			RED
	4			GRN
	3	MWC 22(7) U9		WHITE
	2	MWC 20(7) U90		WHITE
	1	MWC 20(7) U95	CABLE INSULATED	WH/GRN

REQ. ITEM	PART NO.	DESCRIPTION	SYMBOL
THE TECHNICAL MATERIEL CORP. MAMARONECK, NEW YORK			
STOCK SIZE			
CABLE, INTERCONNECT FILTER BOX			
MATERIAL		WEIGHT PER PC.	
TYPE & TEMPER			
DRAWN		ELEC. DES. APP.	MECH. DES. APP.
HEAT TREAT. SPEC.		FINAL APPROVAL	
CA-522 B			

B	1	2" Added to length	11/14/60	3465	WJ	9CB	8-13
A	1	COMPLETE REV	3/4/60		WF	HL	15
ISSUE	ITEM	CHANGED FROM	DATE	CH. NO.	DRAFTS	CHECKER	ENG. APP.
TOLERANCES			SCALE:				
ALL OTHERS		DEC. DIM. ± FRAC. DIM. ± ANGULAR DIM. ±	DRILL, PUNCH, COMMERCIAL STOCK SIZES AND MANUFACTURERS TOLERANCES ARE NOT INCLUDED.				

—	GPT-40K	AP-102		2-23-60
REQ. PER UNIT	MODEL	PROJECT NO.	ASSY. NO.	DATE
USED ON				