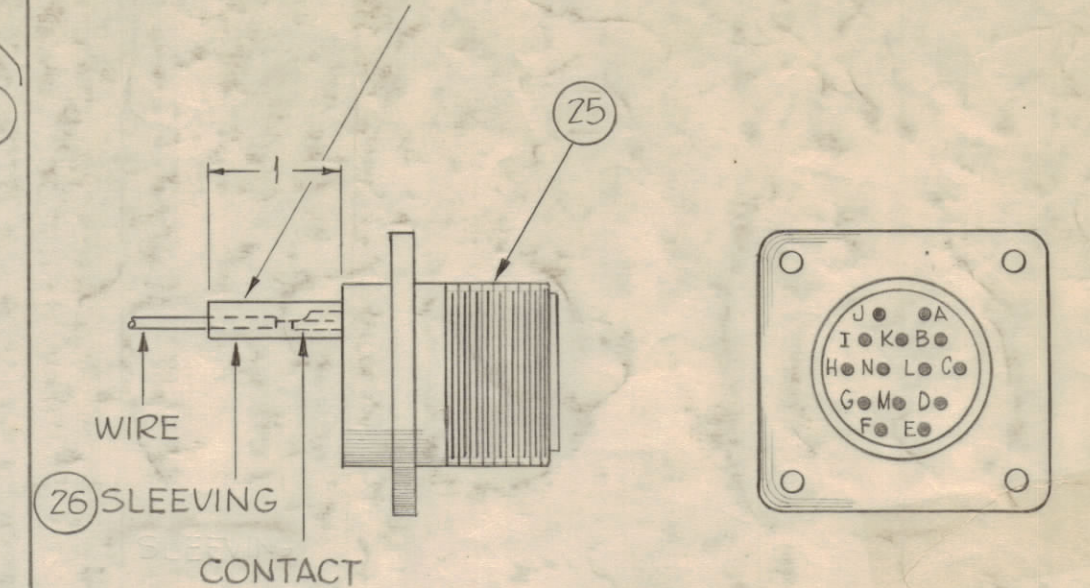




USE ITEM Z6 FOR CONNECTIONS TO PINS A, B, C, D, E, F, G, H, J

CA-496 C



WIRING DIAGRAM OF ITEM 25

2	31	TE-120-Z	TERMINAL, LUG	
5 1/2	30	MWC 22(7)U90	CABLE INSULATED	WHITE BLACK
5	29	MWC 22(7)U0	CABLE, INSULATED	Black
X	28	BS100	SOLDER, SOFT	
X	27	CD101-1MW	CORD, LACING	
X	26	PX100-1-118	INSULATION, SLEEVING	
1	25	MS3102A-20Z7P	CONNECTOR, PLUG MALE	
15 3/8	24	MWC 22(7)UPINK	CABLE, INSULATED	
20	23			Gray
20	22			White
18 7/8	21			WHITE ORANGE
13 1/4	20			WHITE GREEN
13	19			WHITE YELLOW
19 1/4	18			White BROWN
17 3/8	17			Orange
13 3/4	16			Orange
11	15			White Green
11 1/4	14			White Yellow
14	13			White Orange
15	12	PINK		Pink
14 1/2	11			White Brown
15 3/4	10			Grey
14 7/8	9			White
13	8			Blue
21 1/8	7			Yellow
22 1/4	6			Violet
18 1/2	5			Green
19	4			Yellow
13 1/4	3			Red
10 1/4	2			Red
14	1	MWC 22(7)U1	CABLE, INSULATED	Brown

NOTICE TO PERSONS RECEIVING THIS DRAWING
 THE TECHNICAL MATERIEL CORPORATION claims proprietary right in the material disclosed herein. This drawing is issued in confidence for engineering information only and may not be reproduced or used to manufacture anything shown herein without permission from THE TECHNICAL MATERIEL CORPORATION to the user. This drawing is loaned for mutual assistance and is subject to recall at any time.
 Property of:
 THE TECHNICAL MATERIEL CORPORATION
 MAMARONECK, NEW YORK

NOTE - ALL LENGTHS INCLUDE 3/4" STRIPPED WIRE AT BOTH ENDS.

C	6F5	C601 through C612 was C525 through C536 respectively	1-24-61	3991	JDM	JCS	RR
B	2	Items 29, 30, 31 Added, A1971 Leads Relocated	12-8-60	3680	RU	JCS	STM
A	1	REVISED + Redrawn	9-20-60	3008	J.C.B.	JCS	DND

ISSUE	ZONE	DESCRIPTION	DATE	CH. NO.	DRAFTS	CHECKER	ENG. APP.
TOLERANCES		SCALE:					
DEC. DIM. ±		MAXIMUM ALLOWABLE TOLERANCES HAVE BEEN DETERMINED AND ANY DEVIATIONS WILL BE CAUSE FOR REJECTION.					
FRAC. DIM. ± 1/64		REMOVE ALL BURRS AND SHARP EDGES					
ANGULAR DIM. ±							

1	RAK-9			9-17-60
REQ PER UNIT	MODEL	SECTION	ASSY. NO.	DATE

THE TECHNICAL MATERIEL CORP.
 MAMARONECK, NEW YORK

CABLE, MAIN
 R.F. OUTPUT

John C. Biele *[Signature]*

DRAWN *[Signature]* ELEC. DES. APP. *[Signature]* MECH. DES. APP. *[Signature]*

CHECKED *[Signature]* FINAL APPROVAL *[Signature]*

CA-496 C