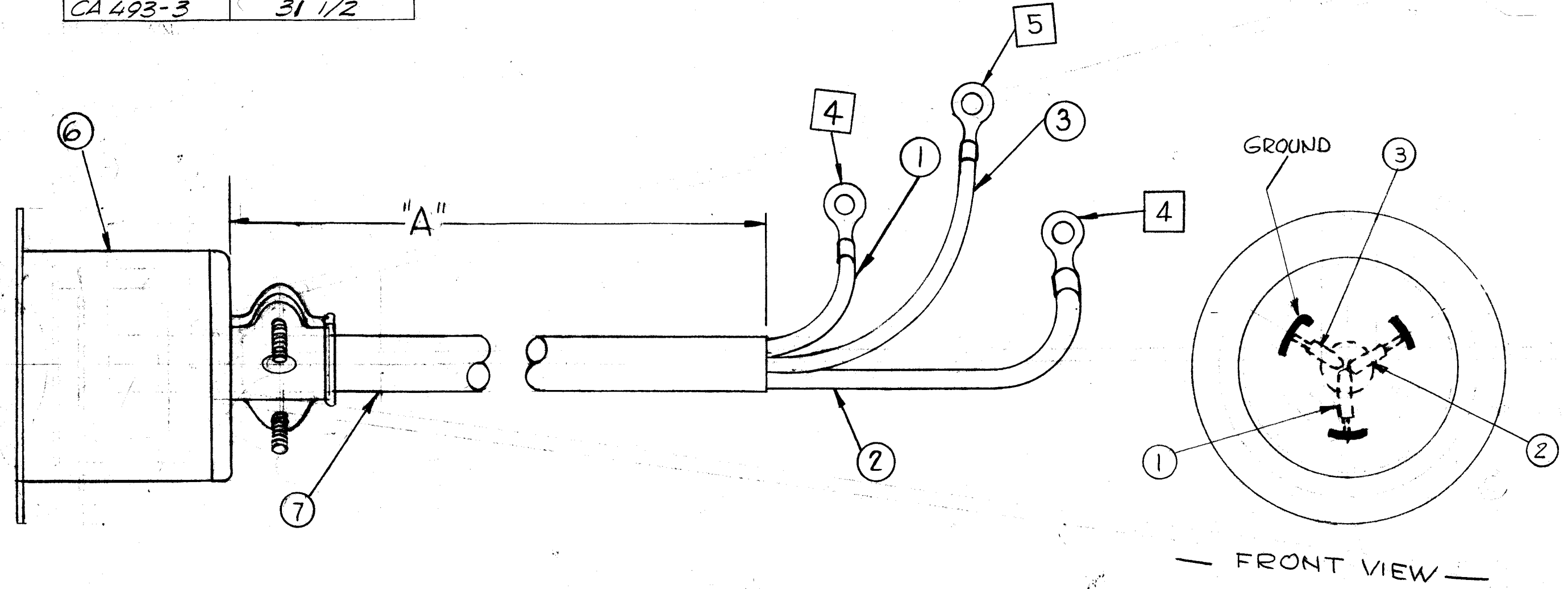


CA-493 J

TMC PART NO.	DIMENSION
CA 493-1	A
CA 493-2	24 1/2
CA 493-3	11
	31 1/2



**NOTICE TO PERSONS RECEIVING THIS DRAWING**

THE TECHNICAL MATERIEL CORPORATION claims proprietary right in the material disclosed hereon. This drawing is issued in confidence for engineering information only and may not be reproduced or used to manufacture anything shown hereon without permission from THE TECHNICAL MATERIEL CORPORATION to the user. This drawing is loaned for mutual assistance and is subject to recall at any time.

Property of:  
THE TECHNICAL MATERIEL CORPORATION  
MAMARONECK, NEW YORK

ISSUE	ITEM	CHANGED FROM	DATE	CH. NO.	DRAFTS	CHECKER	ENG. APP.
U		ADD - 3	4-25-70	19825	GE		
H		BUILDUP UPDATED	3-28-67	18032	L.P.K.		
G		II.3 WAS 1 & II.1 WAS 3	B-1-66	16693	RME		
F		REVISED & CLARIFIED CHART ADDED	4-12-66	16072	G.D.L.		
E		DRAWING CLARIFIED	8-1-62	7001	G.E.		
D	1	FIBERGLASS BELTED FROM ITEM 500	8/31/61	5526	I.I.	GWB	RK
C	2	ITEM 1 WAS 2 Req	6-29-61	5153	G.D.L.		RK
B	1	ITEM 1 WAS 4 Req					
B		Completely revised	12/2/60	3633	R.U.	JCB	
A			12-11-59	1655	P	JCB	

REQ. ITEM	PART NO.	DESCRIPTION	SYMBOL
X 7	PX100-1-500	INSULATION, SLEEVING	BLACK
1 6	JJ.297-1	PLUG, 3WIRE, LOCKING TYPE	J601
1 5	TE-159-32961	TERMINAL LUG	
2 4	TE-155-34170	TERMINAL LUG	
X 3	HWC-14(19)U0	CABLE, INSULATED,	BLACK
X 2	HWC-10(37)U90	CABLE, INSULATED,	WHITE
X 1	HWC-10(37)U9	CABLE, INSULATED,	WHITE

THE TECHNICAL MATERIEL CORP. MAMARONECK, NEW YORK			
STOCK SIZE			
CABLE, A.C. INPUT			
MATERIAL: AC INPUT TO FILTER			
TYPE & TEMPER	HEAT TREAT. SPEC.	DRAWN	CHECKED
		JCB	JCB
FINISH & SPEC. NO.		ELEC. DES. APP.	MECH. DES. APP.

DEC. DIM. ±	MAXIMUM ALLOWABLE TOLERANCES HAVE BEEN DETERMINED AND ANY DEVIATIONS WILL BE CAUSE FOR REJECTION. REMOVE ALL BURRS AND SHARP EDGES
FRAC. DIM. ±	
ANGULAR DIM. ±	

1	RAK-9			12-2-60
REQ. PER UNIT	MODEL	PROJECT NO.	ASS'Y. NO.	DATE