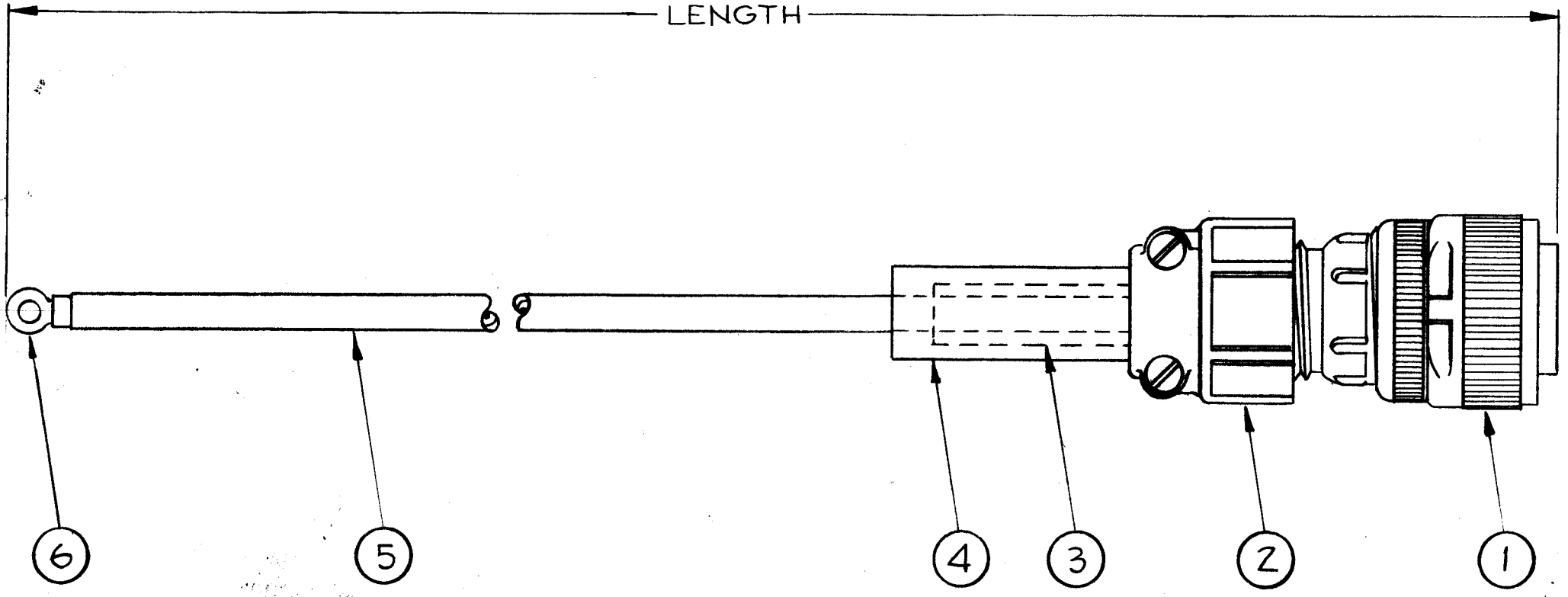


CA-482 B



**NOTICE TO PERSONS RECEIVING THIS DRAWING**  
 THE TECHNICAL MATERIEL CORPORATION claims proprietary right in the material disclosed hereon. This drawing is issued in confidence for engineering information only and may not be reproduced or used to manufacture anything shown hereon without permission from THE TECHNICAL MATERIEL CORPORATION to the user. This drawing is loaned for mutual assistance and is subject to recall at any time.

Property of:  
 THE TECHNICAL MATERIEL CORPORATION  
 MAMARONECK, NEW YORK

*[Faint, illegible text, possibly bleed-through from the reverse side of the drawing.]*

1	6	TE155-34170	SOLDERLESS TERMINAL, PLASTI GRIP
	5	WI-131	CABLE, H.V.
1	4	MS3420-10A	BUSHING, CABLE
1	3	MS3420-6A	BUSHING, CABLE
1	2	MS3057-10	CLAMP, CABLE
1	1	MS3106B-18-16P	CONNECTOR, PLUG (male)

REQ. ITEM	PART NO.	DESCRIPTION	SYMBOL
THE TECHNICAL MATERIEL CORP. MAMARONECK, NEW YORK			
CABLE, HIGH VOLTAGE			
MATERIAL		J.C. Biele	AMP
TYPE & TEMPER	HEATTREAT. SPEC.	DRAWN	CHECKED
FINISH & SPEC. NO.		ELEC. DES. APP MECH. DES. APP	

B	1	ITEM(6) WAS TE-159-34170	1-3-63	7920	WF	Hide	AMP
A	1	TE159-34170 WAS TE159-34160	1/11/60	1747	WF	AMP	AMP
ISSUE	ITEM	CHANGED FROM	DATE	CH. NO.	DRAFTS	CHECKER	ENG. APP.
TOLERANCES			SCALE:				
DEC. DIM. ±			MAXIMUM ALLOWABLE TOLERANCES HAVE BEEN DETERMINED AND ANY DEVIATIONS WILL BE CAUSE FOR REJECTION. REMOVE ALL BURRS AND SHARP EDGES				
FRAC. DIM. ±							
ANGULAR DIM. ±							

CA-482-96  
 TMC NO.                      LENGTH (INCHES)

1	RFD-1	PAL-1K	7-7-59
REQ. PER UNIT	MODEL	PROJECT NO.	ASSY. NO.
USED ON			

CA-482 B