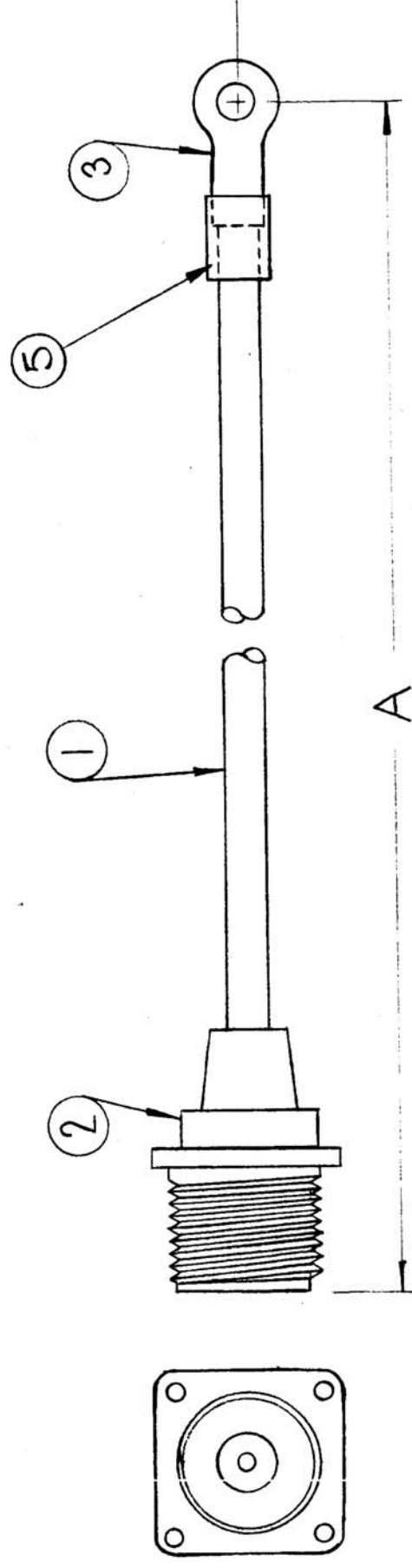


TMC PART NO	A	USED ON UNIT
CA466	10-1/2	GPT-10K (AX557)
CA466-2	20	GPT-10KRL GPT-40KEL

REQ. PER UNIT	1
MODEL	GPT-10K
ASBY. NO.	PA
DATE	11-18-60

CA-466 D



REQ. ITEM	PART NO.	DESCRIPTION	SYMBOL
0-1	PX830-6-1	SLEEVING, SHRINK	BRN
X	BS-100	SOLDER	
1	TE-141-3	TERMINAL	
1	MS-3102A18-16S	CONNECTOR	
10	WI-131	WIRE, HV	

ISSUE ITEM	CHANGED FROM	DATE	CH. NO.	DRAFTS	CHECKER	ENG. APP.
D	CHART. ADDED	11-1-67	18583	NY	SG	FB
C	QTY 10 ADDED IT 1	10/25/66	17050	WHU		
B	IT. 5 WAS PK 643-1	12/16/65	15373	AV		
A	ITEM 5 ADDED ITEM 3 WAS TE-159-32960	7-16-63	9410			

THE TECHNICAL MATERIEL CORP.  
MAMARONECK, NEW YORK  
CABLE, HV, INPUT

RUZZO  
DRAWN  
CHECKED  
FINAL APPROVAL

CA-466 D

FINISH & SPEC. NO.  
ELEC. DES. APP. MECH. DES. APP.