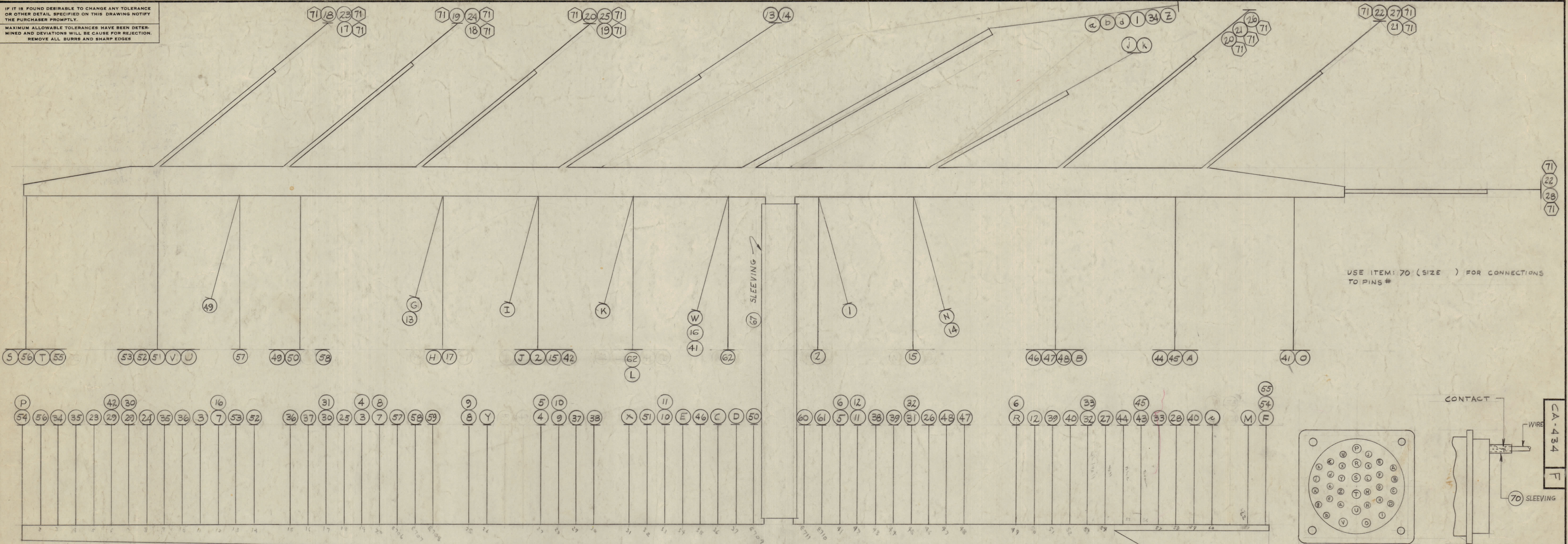


IF IT IS FOUND DESIRABLE TO CHANGE ANY TOLERANCE OR OTHER DETAIL SPECIFIED ON THIS DRAWING NOTIFY THE PURCHASER PROMPTLY.
 MAXIMUM ALLOWABLE TOLERANCES HAVE BEEN DETERMINED AND DEVIATIONS WILL BE CAUSE FOR REJECTION. REMOVE ALL BURRS AND SHARP EDGES

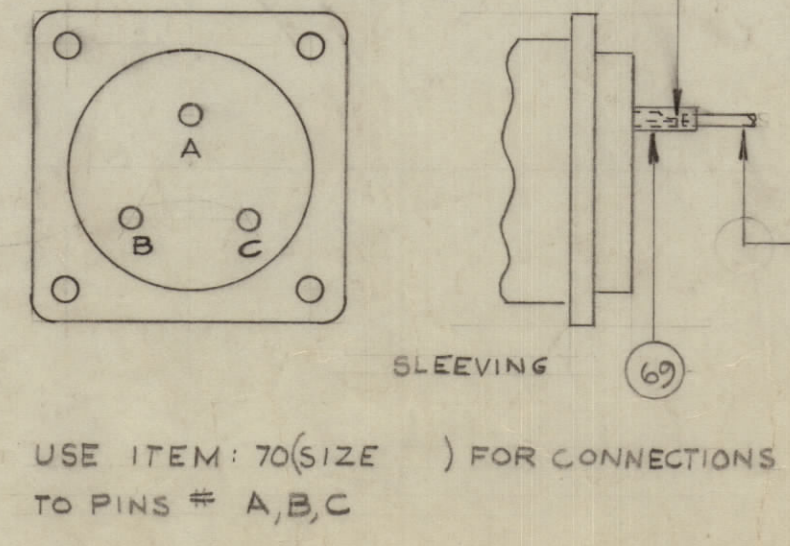


28 1/4	K	MWC 22(7)U 0	BLACK
28 1/2	J	22(7)U 2	RED
31 1/4	d	22(7)U 1	BROWN
11 1/4	c	22(7)U 9 6	WHY BLUE
31	b	22(7)U 9 1	WHY BROWN
31 1/4	a	22(7)U 5	GREEN
31 1/4	Z	22(7)U 9	WHITE
22 1/2	Y	22(7)U 4	YELLOW
19 1/4	X	20(7)U 7	VIOLET
24 1/4	W	16(19)U 6	BLUE
37	V	18(16)U 1	BROWN
37	U	20(7)U 3	ORANGE
39 3/4	T	22(7)U 9 3	WHY ORANGE
42 1/2	S	22(7)U 9 4	WHY YELLOW
11	R	16(19)U 9 7	WHY PURPLE
32	P	22(7)U 0	BLACK
34 1/2	O	22(7)U 9 8	WHY GREY
25 1/2	M	18(16)U 5	GREEN
12	N	22(7)U 3	ORANGE
21 1/4	L	16(19)U 8	GRAY
26 1/4	K	16(19)U 9 8	WHY GRAY
29	J	18(16)U 7	PURPLE
28	I	18(16)U 4	YELLOW
21 1/4	H	18(16)U 9	WHITE
30	G	18(16)U 9 0	WHY BLACK
12 1/4	F	22(7)U 0	BLACK
18	E	18(16)U 9 7	WHY PURPLE
17 1/4	D	18(16)U 9 5	WHY GREEN
19	C	18(16)U 9 2	WHY RED
29 3/4	B	18(16)U 8	GREY
32 1/4	A	MWC 22(7)U 6	BLUE

64	MWC	DELETED	32	10 1/2	MWC 22(7)U 4	WHY YELLOW
63			31	18 3/4		
62	11 1/4	MWC 22(7)U 8	GREY	30	10 3/4	
61	16 3/4	HWC 18(16)U 9	WHITE	29	6 3/4	22(7)U 9 4
60	17 1/4	HWC 18(16)U 4	YELLOW	28	35 3/4	22(7)U 4
59	25	HWC 18(16)U 2	RED	27	32	▲▲▲▲
58	32 1/2	HWC 18(16)U 4	YELLOW	26	25 1/2	
57	35	HWC 18(16)U 2	RED	25	32 1/2	
56	44 1/2	MWC 20(7)U 4 9	WHY YELLOW	24	40	▼▼▼▼
55	40 1/2	▲ 20(7)U 0	BLACK	23	43 1/2	22(7)U 4
64	32 1/2	20(7)U 0	BLACK	22	14 1/4	22(7)U 8
53	39	18(16)U 3	ORANGE	21	15 1/4	▲▲▲▲
52	31	18(16)U 1	BROWN	20	25 1/2	
51	30 1/2	MWC 18(16)U 1	BROWN	19	14 1/2	
50	25 1/2	HWC 18(16)U 4	YELLOW	18	14 1/2	22(7)U 8
49	9 1/4	HWC 18(16)U 2	RED	17	16	18(16)U 9
48	24	MWC 22(7)U 9 2	WHY RED	16	27	22(7)U 6
47	23 1/4	▲ 22(7)U 8	GREY	15	16 1/2	18(16)U 7
46	21 1/4	20(7)U 9 2	WHY RED	14	18	22(7)U 5
45	29 3/4	20(7)U 1	BROWN	13	12 1/4	▲▲▲▲ 05
44	30	20(7)U 6	BLUE	12	10 1/4	9
43	9 1/2	20(7)U 1	BROWN	11	10 1/4	9
42	33 1/2	20(7)U 7	PURPLE	10	8 1/2	9
41	20 3/4	18(16)U 6	BLUE	9	8 3/4	9
40	9	20(7)U 1	BROWN	8	8 3/4	9
39	9 1/4	▲▲▲▲	▲	7	10 1/4	9
38	12 1/4		6	10	7 1/2	
37	12		5	12 1/2	7 1/2	
36	9		4	10 1/4	7 1/2	
35	8 3/4	▼▼▼▼	▼	3	9 3/4	7 1/2
34	37 1/4	▼ 20(7)U 1	BROWN	2	14 1/4	▼▼▼▼ 7
33	8 1/4	MWC 22(7)U 4	WHY YELLOW	1	16 1/4	MWC 22(7)U 19

71	17	TE-120-2	TERMINAL SPADE
70	X	PX-100	SLEEVING
69	X	PX-100	SLEEVING
68	X	CD-101-1, 625	LACING
67	6 3/4	PX-100	SLEEVING 5/8
66	1"	MS3102A37P	CONNECTOR
65	1"	MS3102A229P	CONNECTOR

F	I	WIRE LENGTHS ADDED	7-5-62	7179	93	WV	222
ISSUE	ITEM	CHANGED FROM	DATE	CH. NO.	DRAFTS	CHECKER	ENG. APP.
TOLERANCES		SCALE:					
ALL OTHERS	DEC. DIM. ±	DRILL, PUNCH, COMMERCIAL STOCK					
	FRAC. DIM. ±	SIZES AND MANUFACTURERS					
	ANGULAR DIM. ±	TOLERANCES ARE NOT INCLUDED.					



REQ. ITEM	PART NO.	DESCRIPTION	SYMBOL
THE TECHNICAL MATERIEL CORP. MAMARONECK, NEW YORK			
STOCK SIZE			
MAIN CABLE			
RELAY PANEL			
MATERIAL	WEIGHT PER FC.		
TYPE & TEMPER	DRAWN		ELEC. DES. APP. MECH. DES. APP.
HEAT TREAT. SPEC.	CHECKED	FINAL APPROVAL	
FINISH & SPEC. NO.	CA-434 F		

REQ. PER UNIT	MODEL	PROJECT NO.	ASSY. NO.	DATE
	SPT-10K	AX-139		
USED ON				