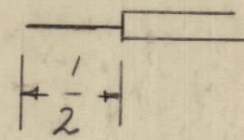
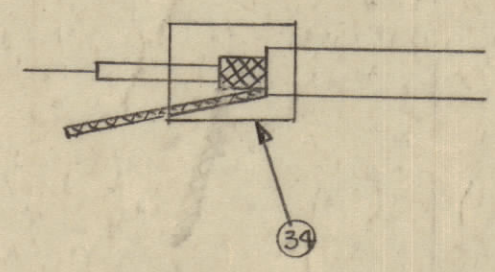


IF IT IS FOUND DESIRABLE TO CHANGE ANY TOLERANCE OR OTHER DETAIL SPECIFIED ON THIS DRAWING NOTIFY THE PURCHASER PROMPTLY.
 MAXIMUM ALLOWABLE TOLERANCES HAVE BEEN DETERMINED AND DEVIATIONS WILL BE CAUSE FOR REJECTION. REMOVE ALL BURRS AND SHARP EDGES

THIS SYMBOL DENOTES END OF INSULATION & NAIL DRIVING POINT WIRE MUST BE STRIPPED 1/2 BEYOND THIS POINT & TINNED 3/8" UNLESS OTHERWISE SPECIFIED.

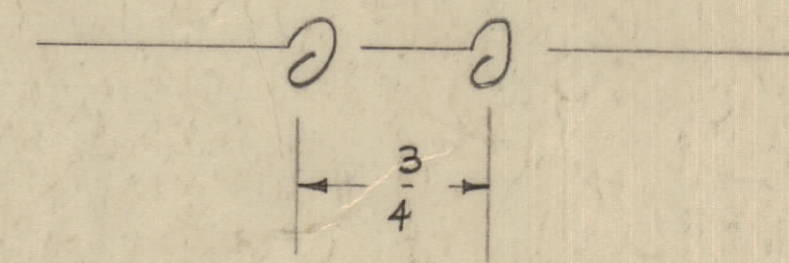


ABOVE SYMBOL DENOTES END OF SHIELD WHICH SHOULD BE TERMINATED AS SHOWN LEAVING EXCESS SHIELDING AS A PIGTAIL TIN PIGTAIL 1/4"

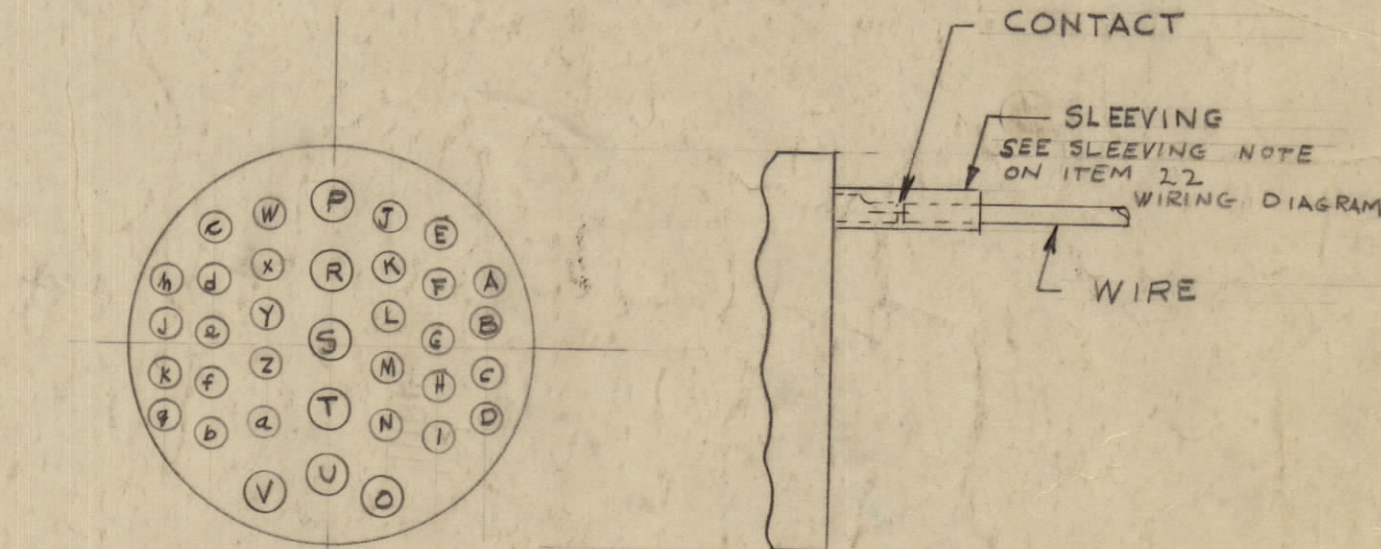


WIRES SHOULD BE PLACED IN CABLE IN NUMERICAL SEQUENCE AS THEY APPEAR IN ITEM COLUMN

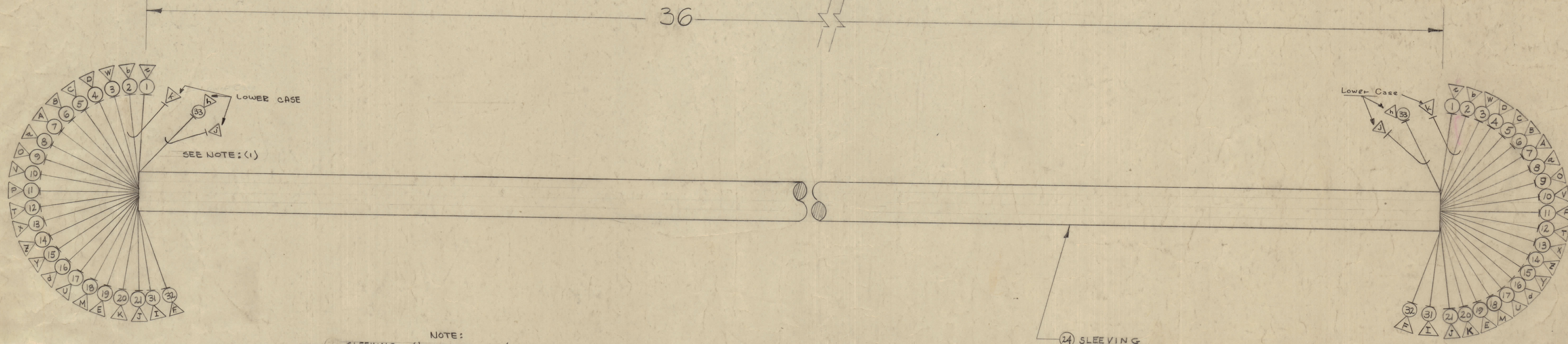
SPACE LACING APPROX. 3/4" APART



NOTE: WIRES TO EXTEND 1/2" BEYOND SLEEVING

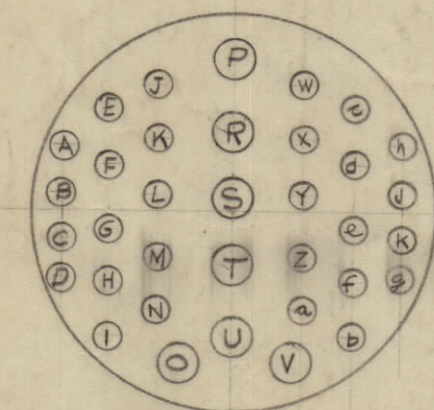


ITEM 23 WIRING DIAGRAM

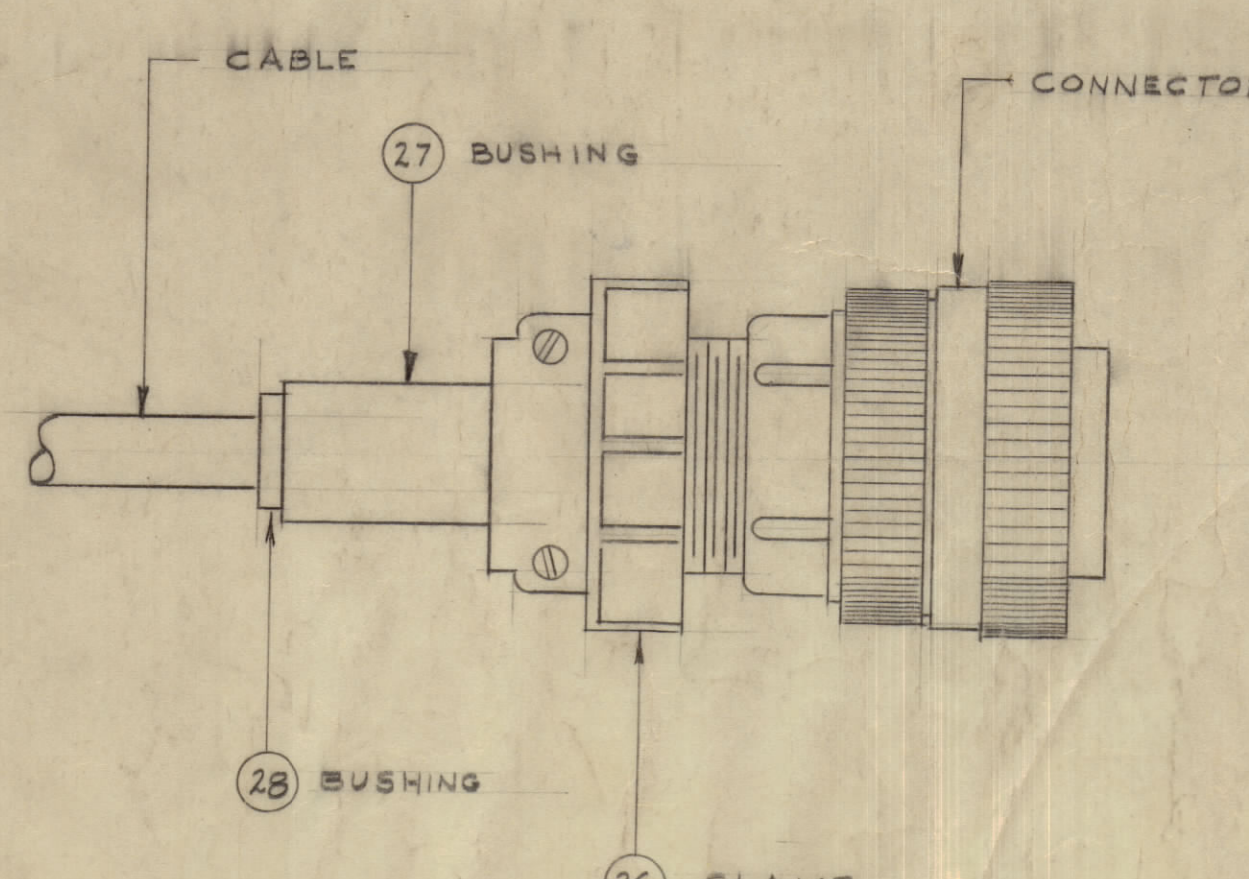
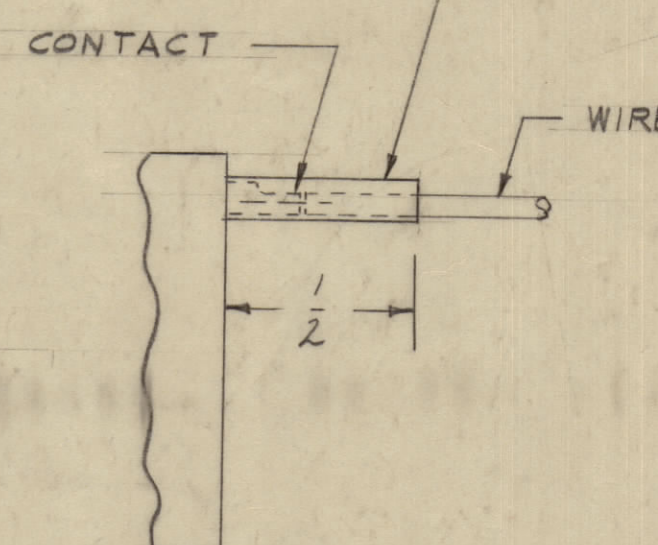


NOTE: SLEEVING: (1) USE ITEM 29 (SIZE 10) FOR CONNECTIONS TO PINS # A, B, C, D, E, J, K, M, W, X, W, Z, z, b, c, d, h, j
 (2) USE ITEM 30 (SIZE 7) FOR CONNECTIONS TO PINS O, P, T, U, V.

NOTE: THIS DETAIL IS THE SAME FOR BOTH ENDS OF CABLE.



ITEM # 22 WIRING DIAGRAM



SEE DETAIL

X	35	BS100	SOLDER, TIN ALLOY	
1"	34	PX-100-1-375	MS. SLEEVING, SHRINK	
39"	33	RG174/U	CABLE, COAXIAL, RF	
39"	32	MWC 22(7)U 5		GREEN
39"	31	MWC 22(7)U 5		WHY GREEN
3"	30	PX-100-1-148	SLEEVING (SIZE 7)	
9"	29	PX-100-1-106	SLEEVING (SIZE 10)	
2	28	MS-3420-12A	BUSHING	
2	27	MS-3420-16A	BUSHING	
2	26	MS 3057-20	CLAMP	

25	CD-101-1-MW	LACING	
36"	24	PX-100-1-375	SLEEVING 3/8"
1	23	MS-3106-B-3275	CONNECTOR
1	22	MS-3106-B-32-7P	CONNECTOR
39"	21	MWC 22(7)U 2	WHY RED
39"	20	MWC 22(7)U 2	RED
39"	19	MWC 22(7)U 4	WHY YELLOW
39"	18	MWC 22(7)U 3	ORANGE
39"	17	MWC 22(7)U 0D	WHY BLACK
39"	16	MWC 18(6)U 1	BROWN
39"	15	MWC 22(7)U 6	
39"	14	MWC 22(7)U 3	BLUE
39"	13	MWC 18(6)U 0	WHY BLACK
39"	12	MWC 18(6)U 8	GREY
39"	11	MWC 18(6)U 9	WHITE
39"	10	MWC 18(6)U 7	
39"	9	MWC 20(7)U 4	VIOLET
39"	8	MWC 22(7)U 1	YELLOW
39"	7	MWC 22(7)U 8	BROWN
39"	6	MWC 22(7)U 9	WHY PINK
39"	5	MWC 22(7)U 91	PINK
39"	4	MWC 20(7)U 7	WHY BROWN
39"	3	MWC 20(7)U 2	VIOLET
39"	2	MWC 22(7)U SJ2	RED
39"	1	MWC 18(6)U 96	WHY BLUE

G	IT 35 ADDED, E/M UPDATED	4/25/64	17050	WHD	84	88
F	IT 24 WAS PX 100-1-375	3-9-64	15234	WHD	92	00
E	CLERICAL CHANGE	3/28/45		WHD		
D	3 IT (24) DETAIL ADDED	2-	135	WHD		
	2 IT (20) WAS 8" LONG	1-	65	WHD		
	1 IT (25) & (24) ADDED			WHD		
C	SEE EMN 10748	2/11/64	10748	A.M.	T.R.	00
B	Lower Case 'k' added	5/27/59	1677	J.C.B.	W.D.	00
A	TOTAL LENGTH CHG'D FROM 32" TO 35"	5/1/59	950	16	R.B.	00

NOTICE TO PERSONS RECEIVING THIS DRAWING
 THE TECHNICAL MATERIEL CORPORATION claims proprietary right in the material disclosed hereon. This drawing is issued in confidence for engineering information only and may not be reproduced or used to manufacture anything shown hereon without permission from THE TECHNICAL MATERIEL CORPORATION to the user. This drawing is loaned for mutual assistance and is subject to recall at any time.

Property of:
 THE TECHNICAL MATERIEL CORPORATION
 MAMARONECK, NEW YORK

TOLERANCES
 ALL DEC. DIM. ± 1/16"
 FRACTIONAL DIM. ± 1/32"
 ANGULAR DIM. ± 1°

SCALE:
 DRILL PUNCH, COMMERCIAL STOCK
 SIZES AND MANUFACTURERS
 TOLERANCES ARE NOT INCLUDED.

1	GPT-10K	AX-186	2-24-59
REQ PER UNIT	MODEL	PROJECT NO.	DATE
		ASSY. NO.	
		USED ON	

THE TECHNICAL MATERIEL CORP. MAMARONECK, NEW YORK			
JUMPER CABLE			
DRIVER DRAWER			
TYPE & TEMPER	DRAWN	ELEC. DES. APP.	MECH. DES. APP.
HEAT TREAT. SPEC.	CHECKED	FINAL APPROVAL	
FINISH & SPEC. NO.			

CA-431

CA-431 6