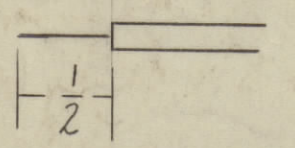


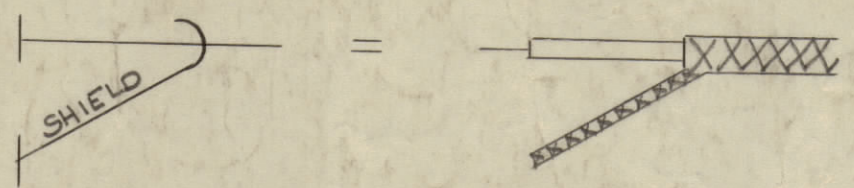
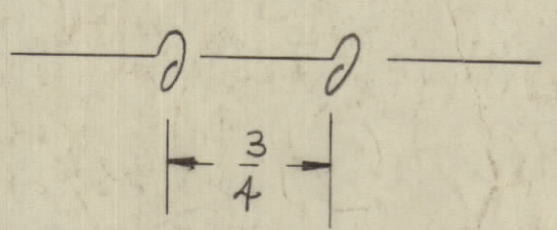
IF IT IS FOUND DESIRABLE TO CHANGE ANY TOLERANCE OR OTHER DETAIL SPECIFIED ON THIS DRAWING NOTIFY THE PURCHASER PROMPTLY.
 MAXIMUM ALLOWABLE TOLERANCES HAVE BEEN DETERMINED AND DEVIATIONS WILL BE CAUSE FOR REJECTION. REMOVE ALL BURRS AND SHARP EDGES.

THIS SYMBOL DENOTE END OF INSULATION & NAIL DRIVING POINT. WIRE MUST BE STRIPPED 1/2" BEYOND THIS POINT & TINNED 3/8" UNLESS OTHERWISE SPECIFIED.



WIRES SHOULD BE PLACED IN CABLE IN NUMERICAL SEQUENCE AS THEY APPEAR IN ITEM COLUMN

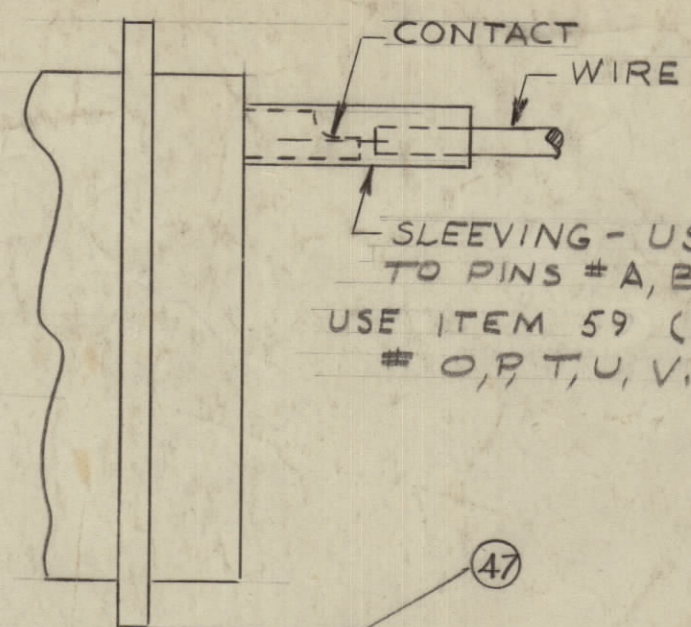
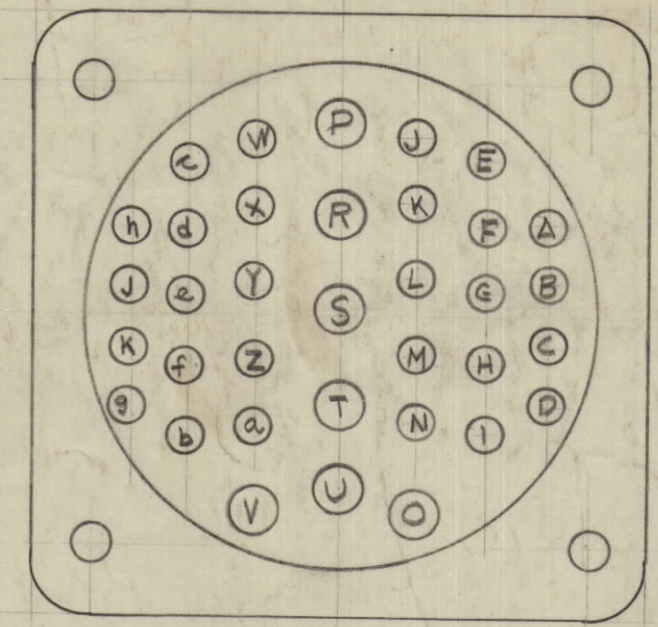
SPACE LACING APPROX. 3/4" APART



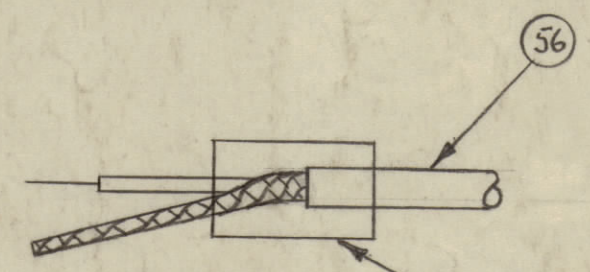
ABOVE SYMBOL DENOTES END OF SHIELD WHICH SHOULD BE TERMINATED AS SHOWN LEAVING EXCESS SHIELDING AS A PIGTAIL 1/4"

0.010 SLEEVING

ITEM # 55 WIRING DIAGRAM

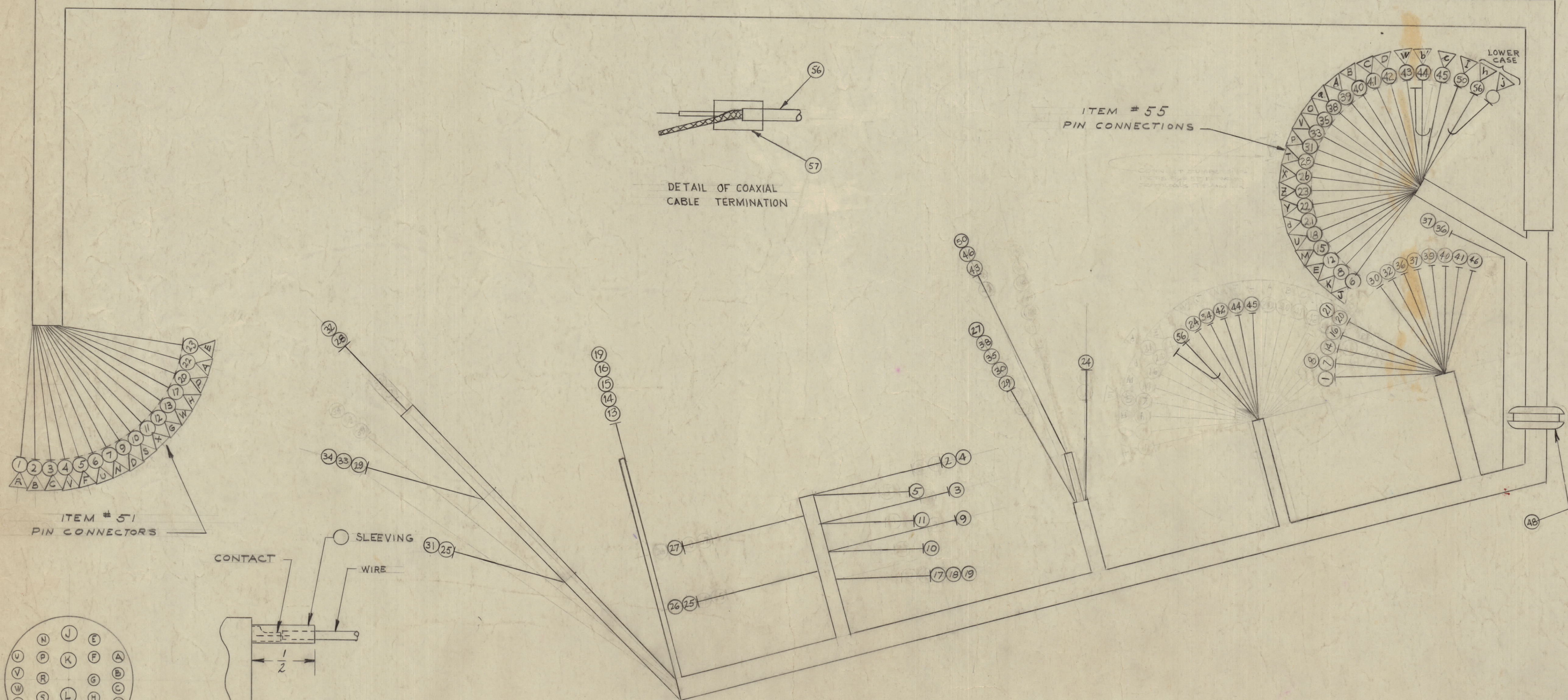


SLEEVING - USE ITEM 58 (SIZE 10) FOR CONNECTIONS TO PINS # A, B, C, D, E, F, J, K, M, W, X, Y, Z, a, b, c, d. USE ITEM 59 (SIZE 7) FOR CONNECTIONS TO PINS # O, P, T, U, V.



DETAIL OF COAXIAL CABLE TERMINATION

ITEM # 55 PIN CONNECTIONS

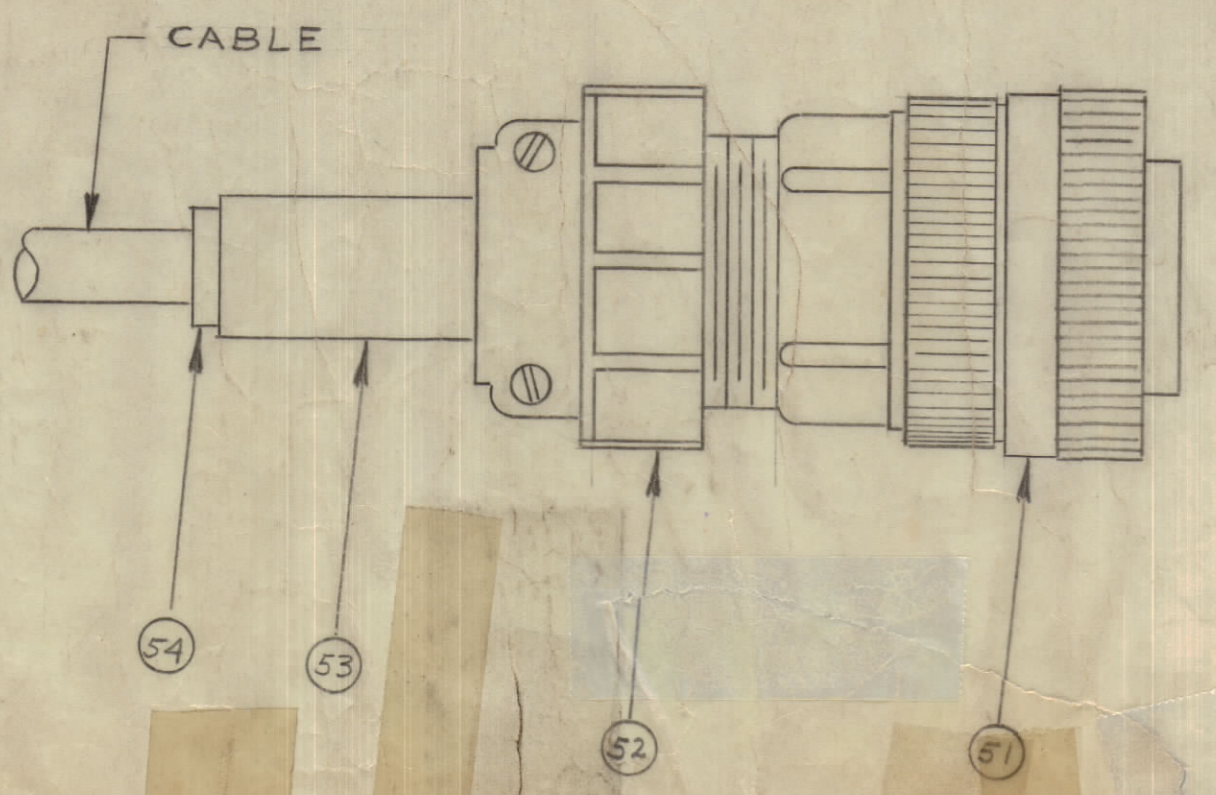


REV	DESCRIPTION	DATE	BY	CHKD	APP
1	REVISED	12-14-59	J.C.B.	J.C.B.	J.C.B.
2	REVISED	1-14-60	J.C.B.	J.C.B.	J.C.B.
3	REVISED	2-10-60	J.C.B.	J.C.B.	J.C.B.
4	REVISED	3-10-60	J.C.B.	J.C.B.	J.C.B.
5	REVISED	4-10-60	J.C.B.	J.C.B.	J.C.B.
6	REVISED	5-10-60	J.C.B.	J.C.B.	J.C.B.
7	REVISED	6-10-60	J.C.B.	J.C.B.	J.C.B.
8	REVISED	7-10-60	J.C.B.	J.C.B.	J.C.B.
9	REVISED	8-10-60	J.C.B.	J.C.B.	J.C.B.
10	REVISED	9-10-60	J.C.B.	J.C.B.	J.C.B.
11	REVISED	10-10-60	J.C.B.	J.C.B.	J.C.B.
12	REVISED	11-10-60	J.C.B.	J.C.B.	J.C.B.
13	REVISED	12-10-60	J.C.B.	J.C.B.	J.C.B.
14	REVISED	1-10-61	J.C.B.	J.C.B.	J.C.B.
15	REVISED	2-10-61	J.C.B.	J.C.B.	J.C.B.
16	REVISED	3-10-61	J.C.B.	J.C.B.	J.C.B.
17	REVISED	4-10-61	J.C.B.	J.C.B.	J.C.B.
18	REVISED	5-10-61	J.C.B.	J.C.B.	J.C.B.
19	REVISED	6-10-61	J.C.B.	J.C.B.	J.C.B.
20	REVISED	7-10-61	J.C.B.	J.C.B.	J.C.B.
21	REVISED	8-10-61	J.C.B.	J.C.B.	J.C.B.
22	REVISED	9-10-61	J.C.B.	J.C.B.	J.C.B.
23	REVISED	10-10-61	J.C.B.	J.C.B.	J.C.B.
24	REVISED	11-10-61	J.C.B.	J.C.B.	J.C.B.
25	REVISED	12-10-61	J.C.B.	J.C.B.	J.C.B.
26	REVISED	1-10-62	J.C.B.	J.C.B.	J.C.B.
27	REVISED	2-10-62	J.C.B.	J.C.B.	J.C.B.
28	REVISED	3-10-62	J.C.B.	J.C.B.	J.C.B.
29	REVISED	4-10-62	J.C.B.	J.C.B.	J.C.B.
30	REVISED	5-10-62	J.C.B.	J.C.B.	J.C.B.
31	REVISED	6-10-62	J.C.B.	J.C.B.	J.C.B.
32	REVISED	7-10-62	J.C.B.	J.C.B.	J.C.B.
33	REVISED	8-10-62	J.C.B.	J.C.B.	J.C.B.
34	REVISED	9-10-62	J.C.B.	J.C.B.	J.C.B.
35	REVISED	10-10-62	J.C.B.	J.C.B.	J.C.B.
36	REVISED	11-10-62	J.C.B.	J.C.B.	J.C.B.
37	REVISED	12-10-62	J.C.B.	J.C.B.	J.C.B.
38	REVISED	1-10-63	J.C.B.	J.C.B.	J.C.B.
39	REVISED	2-10-63	J.C.B.	J.C.B.	J.C.B.
40	REVISED	3-10-63	J.C.B.	J.C.B.	J.C.B.
41	REVISED	4-10-63	J.C.B.	J.C.B.	J.C.B.
42	REVISED	5-10-63	J.C.B.	J.C.B.	J.C.B.
43	REVISED	6-10-63	J.C.B.	J.C.B.	J.C.B.
44	REVISED	7-10-63	J.C.B.	J.C.B.	J.C.B.
45	REVISED	8-10-63	J.C.B.	J.C.B.	J.C.B.
46	REVISED	9-10-63	J.C.B.	J.C.B.	J.C.B.
47	REVISED	10-10-63	J.C.B.	J.C.B.	J.C.B.
48	REVISED	11-10-63	J.C.B.	J.C.B.	J.C.B.
49	REVISED	12-10-63	J.C.B.	J.C.B.	J.C.B.
50	REVISED	1-10-64	J.C.B.	J.C.B.	J.C.B.
51	REVISED	2-10-64	J.C.B.	J.C.B.	J.C.B.
52	REVISED	3-10-64	J.C.B.	J.C.B.	J.C.B.
53	REVISED	4-10-64	J.C.B.	J.C.B.	J.C.B.
54	REVISED	5-10-64	J.C.B.	J.C.B.	J.C.B.
55	REVISED	6-10-64	J.C.B.	J.C.B.	J.C.B.
56	REVISED	7-10-64	J.C.B.	J.C.B.	J.C.B.
57	REVISED	8-10-64	J.C.B.	J.C.B.	J.C.B.
58	REVISED	9-10-64	J.C.B.	J.C.B.	J.C.B.
59	REVISED	10-10-64	J.C.B.	J.C.B.	J.C.B.
60	REVISED	11-10-64	J.C.B.	J.C.B.	J.C.B.
61	REVISED	12-10-64	J.C.B.	J.C.B.	J.C.B.
62	REVISED	1-10-65	J.C.B.	J.C.B.	J.C.B.
63	REVISED	2-10-65	J.C.B.	J.C.B.	J.C.B.
64	REVISED	3-10-65	J.C.B.	J.C.B.	J.C.B.
65	REVISED	4-10-65	J.C.B.	J.C.B.	J.C.B.
66	REVISED	5-10-65	J.C.B.	J.C.B.	J.C.B.
67	REVISED	6-10-65	J.C.B.	J.C.B.	J.C.B.
68	REVISED	7-10-65	J.C.B.	J.C.B.	J.C.B.
69	REVISED	8-10-65	J.C.B.	J.C.B.	J.C.B.
70	REVISED	9-10-65	J.C.B.	J.C.B.	J.C.B.
71	REVISED	10-10-65	J.C.B.	J.C.B.	J.C.B.
72	REVISED	11-10-65	J.C.B.	J.C.B.	J.C.B.
73	REVISED	12-10-65	J.C.B.	J.C.B.	J.C.B.
74	REVISED	1-10-66	J.C.B.	J.C.B.	J.C.B.
75	REVISED	2-10-66	J.C.B.	J.C.B.	J.C.B.
76	REVISED	3-10-66	J.C.B.	J.C.B.	J.C.B.
77	REVISED	4-10-66	J.C.B.	J.C.B.	J.C.B.
78	REVISED	5-10-66	J.C.B.	J.C.B.	J.C.B.
79	REVISED	6-10-66	J.C.B.	J.C.B.	J.C.B.
80	REVISED	7-10-66	J.C.B.	J.C.B.	J.C.B.
81	REVISED	8-10-66	J.C.B.	J.C.B.	J.C.B.
82	REVISED	9-10-66	J.C.B.	J.C.B.	J.C.B.
83	REVISED	10-10-66	J.C.B.	J.C.B.	J.C.B.
84	REVISED	11-10-66	J.C.B.	J.C.B.	J.C.B.
85	REVISED	12-10-66	J.C.B.	J.C.B.	J.C.B.
86	REVISED	1-10-67	J.C.B.	J.C.B.	J.C.B.
87	REVISED	2-10-67	J.C.B.	J.C.B.	J.C.B.
88	REVISED	3-10-67	J.C.B.	J.C.B.	J.C.B.
89	REVISED	4-10-67	J.C.B.	J.C.B.	J.C.B.
90	REVISED	5-10-67	J.C.B.	J.C.B.	J.C.B.
91	REVISED	6-10-67	J.C.B.	J.C.B.	J.C.B.
92	REVISED	7-10-67	J.C.B.	J.C.B.	J.C.B.
93	REVISED	8-10-67	J.C.B.	J.C.B.	J.C.B.
94	REVISED	9-10-67	J.C.B.	J.C.B.	J.C.B.
95	REVISED	10-10-67	J.C.B.	J.C.B.	J.C.B.
96	REVISED	11-10-67	J.C.B.	J.C.B.	J.C.B.
97	REVISED	12-10-67	J.C.B.	J.C.B.	J.C.B.
98	REVISED	1-10-68	J.C.B.	J.C.B.	J.C.B.
99	REVISED	2-10-68	J.C.B.	J.C.B.	J.C.B.
100	REVISED	3-10-68	J.C.B.	J.C.B.	J.C.B.

NOTICE TO PERSONS RECEIVING THIS DRAWING
 THE TECHNICAL MATERIEL CORPORATION claims proprietary right in the material disclosed herein. This drawing is issued in confidence for engineering information only and may not be reproduced or used to manufacture any items shown hereon without permission from THE TECHNICAL MATERIEL CORPORATION to the user. This drawing is loaned for mutual assistance and is subject to recall at any time.

Property of:
 THE TECHNICAL MATERIEL CORPORATION
 MAMARONECK, NEW YORK

QTY	ITEM	PART NO.	DESCRIPTION	SYMBOL
60	BS100		SOLDER, TIN ALLOY	
8	59	PX100-1-148	INS., SLVG SIZE 7	
24	58	PX100-1-106	INS., SLVG SIZE 10	
1	57	PX830-12-1	INS., SLVG., SHRINK	
18	56	RG188/U	CABLE, RF, COAXIAL	
1	55	MS3102A-327P	CONNECTOR	J2002
1	54	MS3420-12A	BUSHING	
1	53	MS3420-16A	BUSHING	
1	52	MS3057-16	CLAMP	
1	51	MS3106B-28-11S	CONNECTOR	P2000
23	50	MWC22(7)U92		WH
X	49	CD101-1-MW	LACING	
1	48	EY102-17	GROMMET	
38	47	PX100-1-375	SLEEVING	
18	46	MWC 22(7)U2		RED
17 1/4	45	MWC18(16)U96		WH
18 1/4	44	MWC 22(7)S22		BLU
22 1/4	43	MWC 22(7)U2		RED
17	42	MWC 20(7)U97		WH
15	41	MWC 22(7)U91		WH
14	40	MWC 22(7)U95		BROWN
14 1/4	39	MWC 22(7)U98		WH GRN
21	38	MWC 22(7)U1		WH GRN
10 3/4	37	MWC 22(7)U4		BROWN
10 3/4	36	MWC 22(7)U4		WH
21 3/4	35	MWC 20(7)U4		YELLOW
22 1/4	34	MWC 18(16)U7		YELLOW
31 3/4	33	MWC 18(16)U7		VIOLET
27 1/4	32	MWC 18(16)U98		WH
29 1/4	31	MWC 18(16)U9		WH
15 1/4	30	MWC 18(16)U1		WHITE
19 1/4	29	MWC 18(16)U1		BROWN
32 1/4	28	MWC 18(16)U8		BROWN
14 3/4	27	MWC 18(16)U8		GREY
25 1/4	26	MWC 18(16)U90		WH
13 1/4	25	MWC 18(16)U90		WH
12	24	MWC 20(7)U5		BLACK
41 1/4	23	MWC 22(7)U98		WH
42 1/4	22	MWC 22(7)U96		WH
15	21	MWC 16(7)U0		BLACK
46 1/4	20	MWC 16(7)U0		BLACK
13	19	MWC 22(7)U90		WH
23 3/4	18	MWC 22(7)U90		WH
58 3/4	17	MWC 22(7)U90		WH
15 3/4	16	MWC 22(7)U9		WH
20 3/4	15	MWC 22(7)U3		WHITE
17	14	MWC 22(7)U3		ORANGE
53 1/4	13	MWC 22(7)U3		ORANGE
43 1/4	12	MWC 22(7)U4		ORANGE
57 1/4	11	MWC 20(7)U91		WH
57	10	MWC 20(7)U91		WH
59	9	MWC 22(7)U9		WH
13 3/4	8	MWC 22(7)U2		WH
46 1/4	7	MWC 22(7)U2		RED
43 3/4	6	MWC 22(7)U2		RED
58 1/4	5	MWC 20(7)U4		WH
58 1/4	4	MWC 20(7)U4		YELLOW
59 3/4	3	MWC 22(7)U96		WH
60 1/4	2	MWC 22(7)U96		WH
46 1/4	1	MWC 22(7)U6		WH
				BLUE



REQ. PER UNIT	MODEL	PROJECT NO.	ASSY. NO.	DATE
1	GPT-10 K AX-104			1-14-59