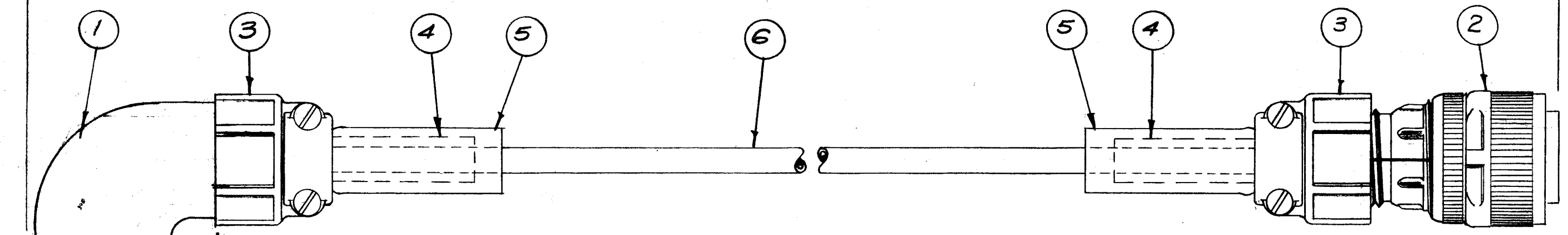


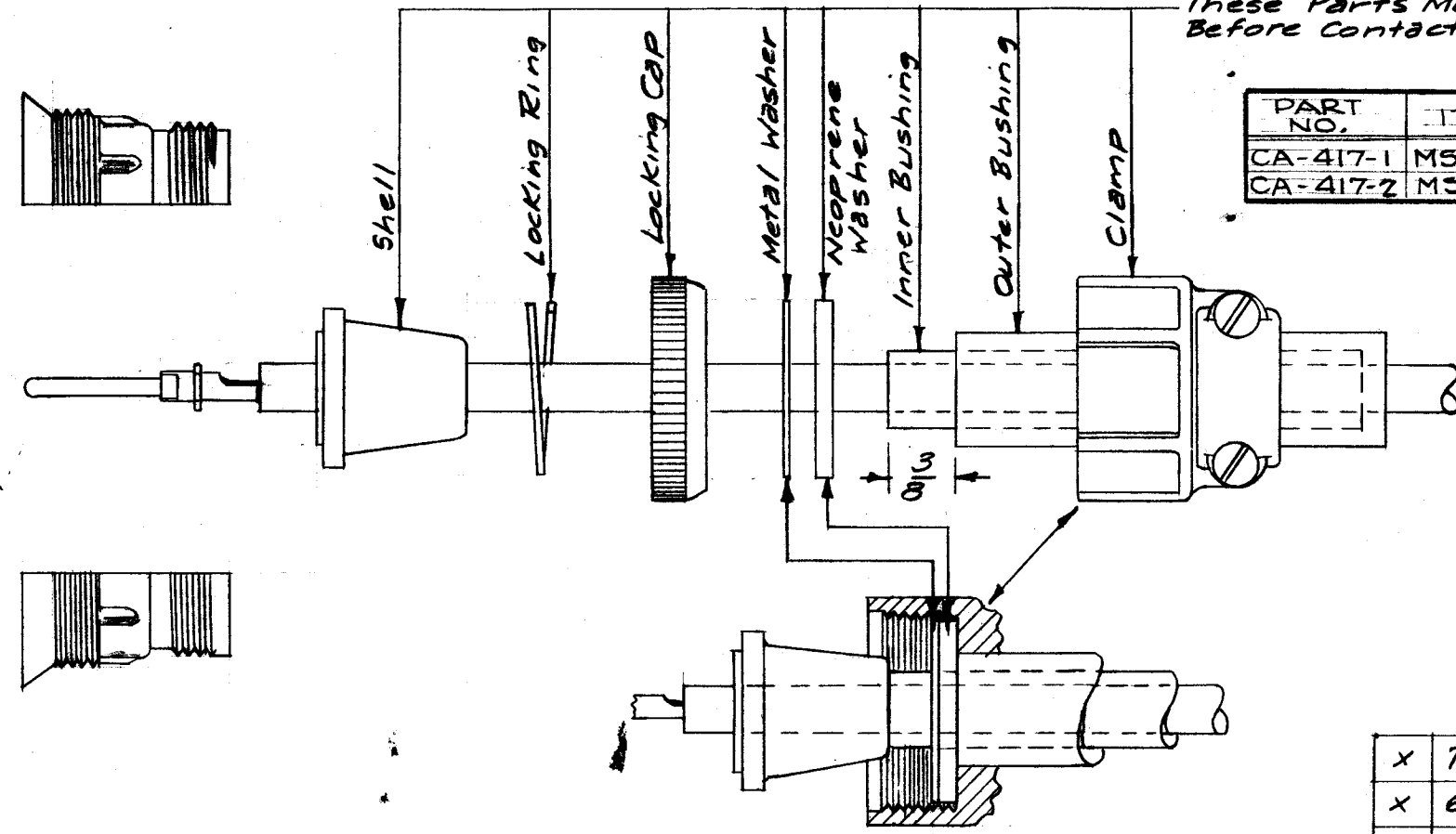
CA-417

LENGTH (see Chart)



These Parts Must be Slipped over Wire Before Contact Pin is Seated.

PART NO.	ITEM 1	ITEM 2	LENGTH OF CABLE	CABLE SYMBOL NO.
CA-417-1	M53108 B-18-16P	M53106 B-18-16S	11 FEET	W 503
CA-417-2	M53108 B-18-16S	M53106 B-18-16P	4 FEET 6 IN.	W 503



Inside Bushing (item 4) Must meet Shell as shown.

NOTICE TO PERSONS RECEIVING THIS DRAWING

THE TECHNICAL MATERIEL CORPORATION claims proprietary right in the material disclosed hereon. This drawing is issued in confidence for engineering information only and may not be reproduced or used to manufacture anything shown hereon without permission from THE TECHNICAL MATERIEL CORPORATION to the user. This drawing is loaned for mutual assistance and is subject to recall at any time.

Property of:
THE TECHNICAL MATERIEL CORPORATION
MAMARONECK, NEW YORK

x 7	BS-100	Solder, Soft	
x 6	WI-131	Wire, H.V.	BIK.
2 5	M53420-10A	Bushing, Cable	
2 4	M53420-6A	Bushing, Cable	
2 3	M53057-10	Clamp, Cable	
1 2	SEE CHART	Connector, Plug,	FEMALE
1 1	SEE CHART	Connector, Plug, RIGHT ANGLE	MALE
REQ. ITEM	PART NO.	DESCRIPTION	SYMBOL

NOTE - FOR CONNECTIONS ONLY

PART NO.	CONNECTS FROM	TO	FOR COMBINATION
CA-417-1	J303 (RTP-2)	J702 (RTM-2)	B
CA-417-1	J303 (RTP-2)	J504 (CAB-7)	A, C, D
CA-417-2	J603 (RTP-2)	J703 (RTM-2)	B
CA-417-2	J603 (RTP-2)	J503 (CAB-7)	A, C, D

ISSUE ITEM	CHANGED FROM	DATE	CH. NO.	DRAFTS	CHECKER	ENG. APP.
A 1	CHART FOR ITEMS 1 and 2 ADDED	1/20/59	G94	File	File	File

TOLERANCES	SCALE:
DEC. DIM. ± FRAC. DIM. ± ANGULAR DIM. ±	MAXIMUM ALLOWABLE TOLERANCES HAVE BEEN DETERMINED AND ANY DEVIATIONS WILL BE CAUSE FOR REJECTION. REMOVE ALL BURRS AND SHARP EDGES

1 EA.	CAB-7				12-15-59
REQ. PER UNIT	MODEL	PROJECT NO.	ASS'Y. NO.	DATE	USED ON

STOCK SIZE				THE TECHNICAL MATERIEL CORP. MAMARONECK, NEW YORK			
MATERIAL				CABLE ASS'Y., H.V.			
				16 12/15/58		DRAWN	
				CHECKED		FINAL APPROVAL	
				ELEC. DES. APP.		MECH. DES. APP.	
				CA-417		A	