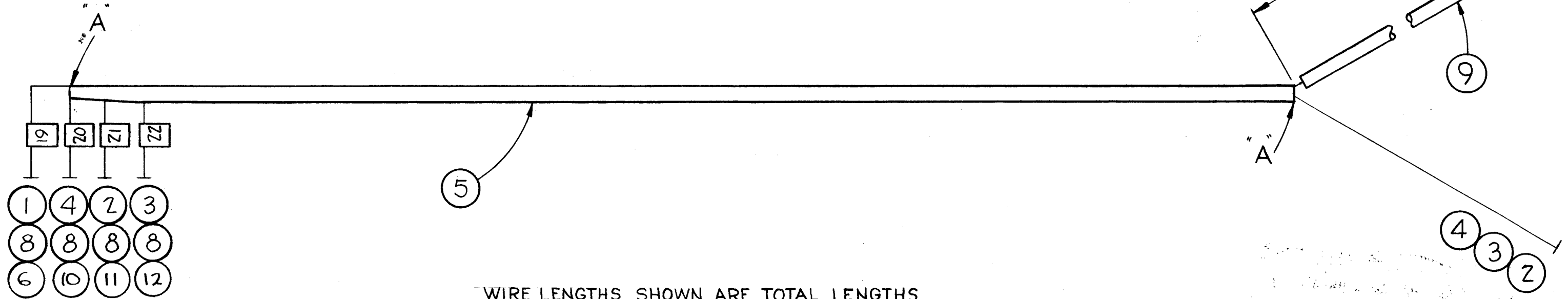


NOTE - LEG NOT SHOWN TO SCALE, EXTEND TO 16" DIM. AS SHOWN



WIRE LENGTHS SHOWN ARE TOTAL LENGTHS ALLOW 1/2" EACH END FOR STRIPPING TIE AT POINTS "A"

NOTICE TO PERSONS RECEIVING THIS DRAWING
 THE TECHNICAL MATERIEL CORPORATION claims proprietary right in the material disclosed hereon. This drawing is issued in confidence for engineering information only and may not be reproduced or used to manufacture anything shown hereon without permission from THE TECHNICAL MATERIEL CORPORATION to the user. This drawing is loaned for mutual assistance and is subject to recall at any time.

Property of:
 THE TECHNICAL MATERIEL CORPORATION
 MAMARONECK, NEW YORK

REQ.	ITEM	PART NO.	DESCRIPTION	SYMBOL
1	12	LA101-22	TABS, MARKING	
1	11	LA101-21	TABS, MARKING	
1	10	LA101-20	TABS, MARKING	
16 1/2	9	PX100-1-035	SLEEVING	
4	8	TE120-2	LUG	
X	7	BS-100	SOLDER, SOFT	
1	6	LA-101-19	TABS, MARKING	
12	5	PX100-1-208	SLEEVING	
18	4	MWC22(7)U5	CABLE, INSULATED	GREEN
16 1/2	3	↓ ↓ ↓ 0	↓ ↓ ↓	BLACK
17 1/4	2	↓ ↓ ↓ 2	↓ ↓ ↓	RED
30 3/4	1	MWC22(7)U9	CABLE, INSULATED	WHITE
STOCK SIZE			THE TECHNICAL MATERIEL CORP. MAMARONECK, NEW YORK	
MATERIAL			POWER CABLE ASSY	
TYPE & TEMPER			J.C. BIELE	
HEAT TREAT. SPEC.			DRAWN	CHECKED
FINISH & SPEC. NO.			FINAL APPROVAL	
ELEC. DES. APP.			MECH. DES. APP.	

ISSUE	ITEM	CHANGED FROM	DATE	CH. NO.	DRAFTS	CHECKER	ENG. APP.
A		ITEMS 10, 11 & 12 ADDED B/M UPDATED	11.18.66	17269	WFO	JCS	ORR
TOLERANCES		SCALE:					
DEC. DIM. ±		MAXIMUM ALLOWABLE TOLERANCES HAVE BEEN DETERMINED AND ANY DEVIATIONS WILL BE CAUSE FOR REJECTION.					
FRAC. DIM. ±		REMOVE ALL BURRS AND SHARP EDGES					
ANGULAR DIM. ±							

REQ. PER UNIT	MODEL	PROJECT NO.	ASS'Y. NO.	DATE
1	RTF-2	P/A		11-23-58
USED ON				