

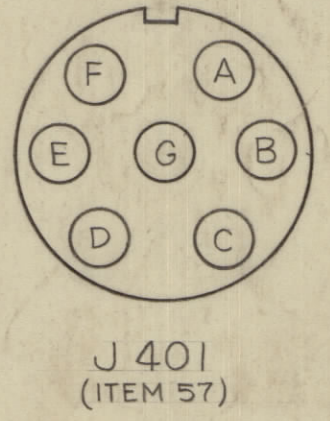
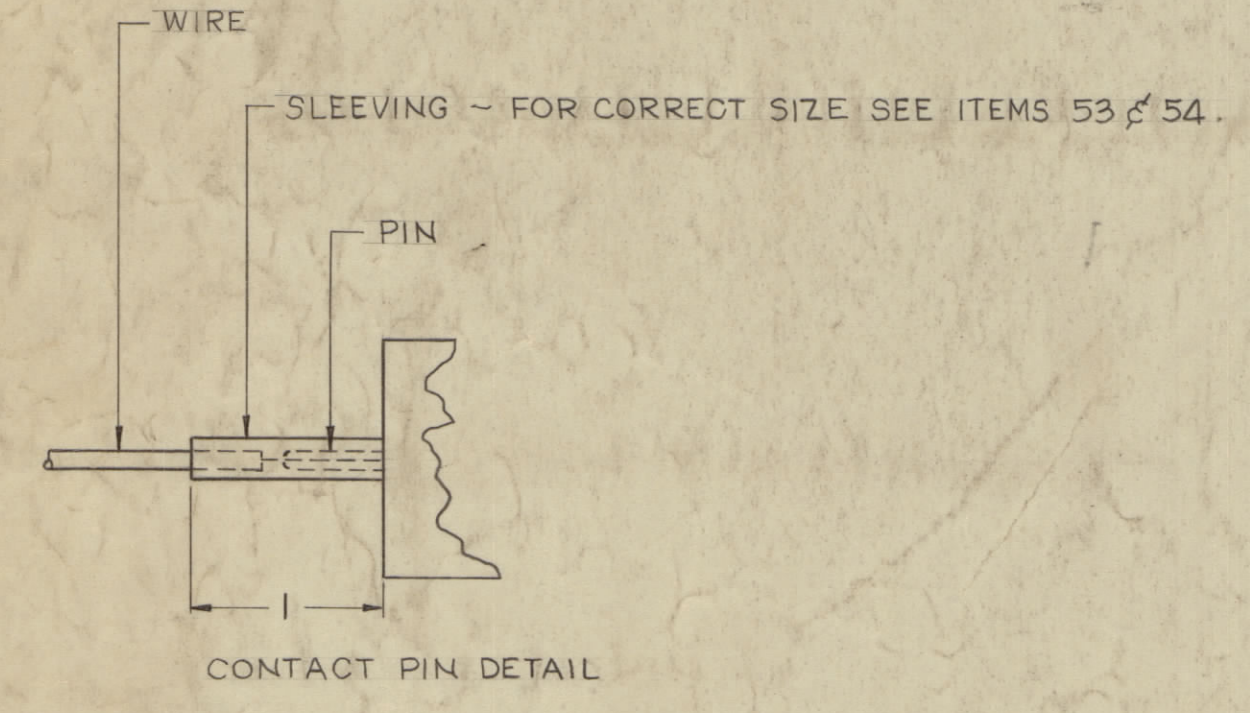
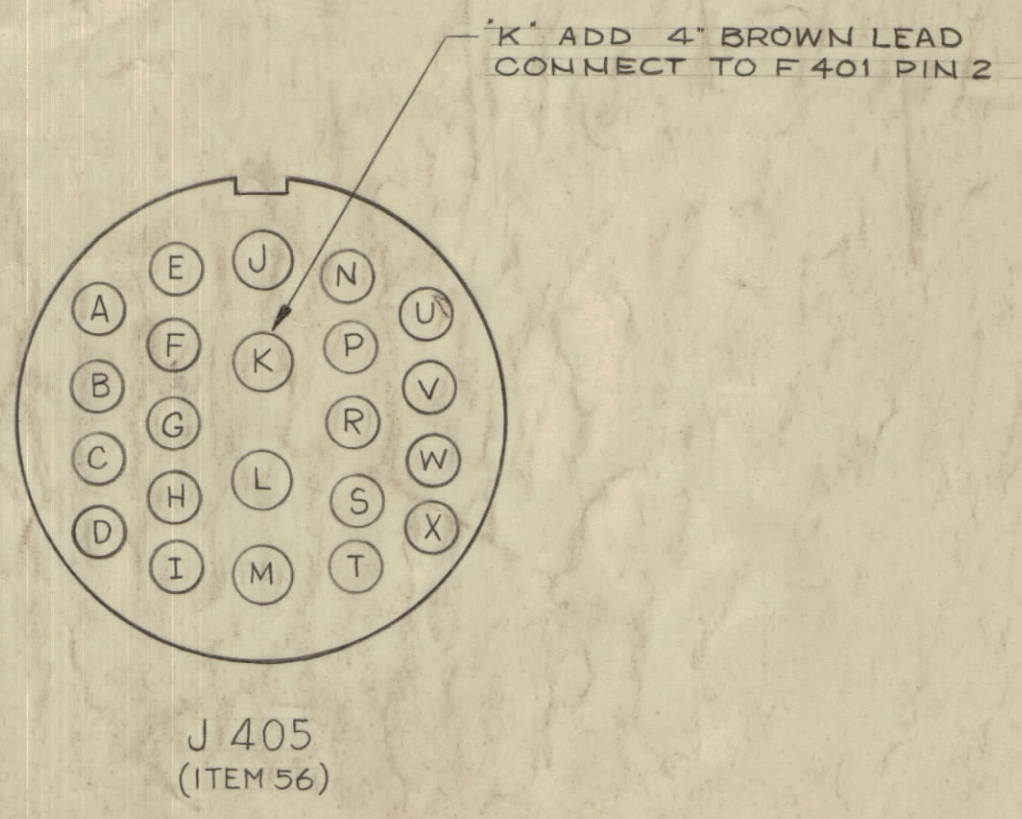
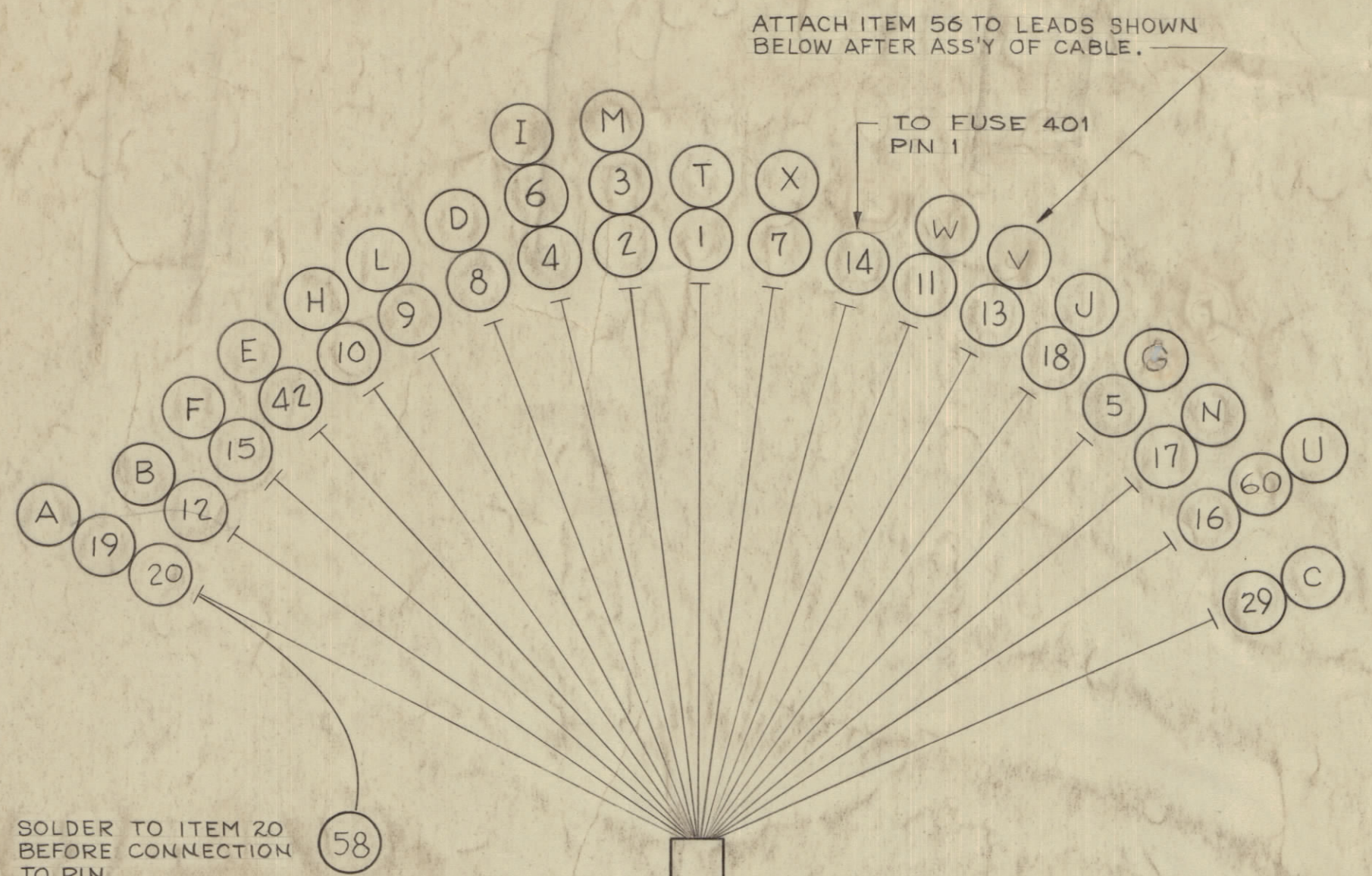
IF IT IS FOUND DESIRABLE TO CHANGE ANY TOLERANCE OR OTHER DETAIL SPECIFIED ON THIS DRAWING NOTIFY THE PURCHASER PROMPTLY.

MAXIMUM ALLOWABLE TOLERANCES HAVE BEEN DETERMINED AND DEVIATIONS WILL BE CAUSE FOR REJECTION. REMOVE ALL BURRS AND SHARP EDGES.

NOTICE TO PERSONS RECEIVING THIS DRAWING

THE TECHNICAL MATERIEL CORPORATION claims proprietary right in the material disclosed hereon. This drawing is issued in confidence and no information may be used for manufacturing or used to manufacture any thing without the permission of THE TECHNICAL MATERIEL CORPORATION to the user. This drawing is loaned for mutual assistance and is subject to recall at any time.

Property of:
THE TECHNICAL MATERIEL CORPORATION
MAMARONECK, NEW YORK



NOTES:

THIS SYMBOL DENOTES END OF INSULATION AND NAIL DRIVING POINT. WIRE MUST BE STRIPPED 1/2" BEYOND THIS POINT AND TINNED 3/8" UNLESS OTHERWISE SPECIFIED.

THIS EQUALS THIS

3 | END OF SHIELD

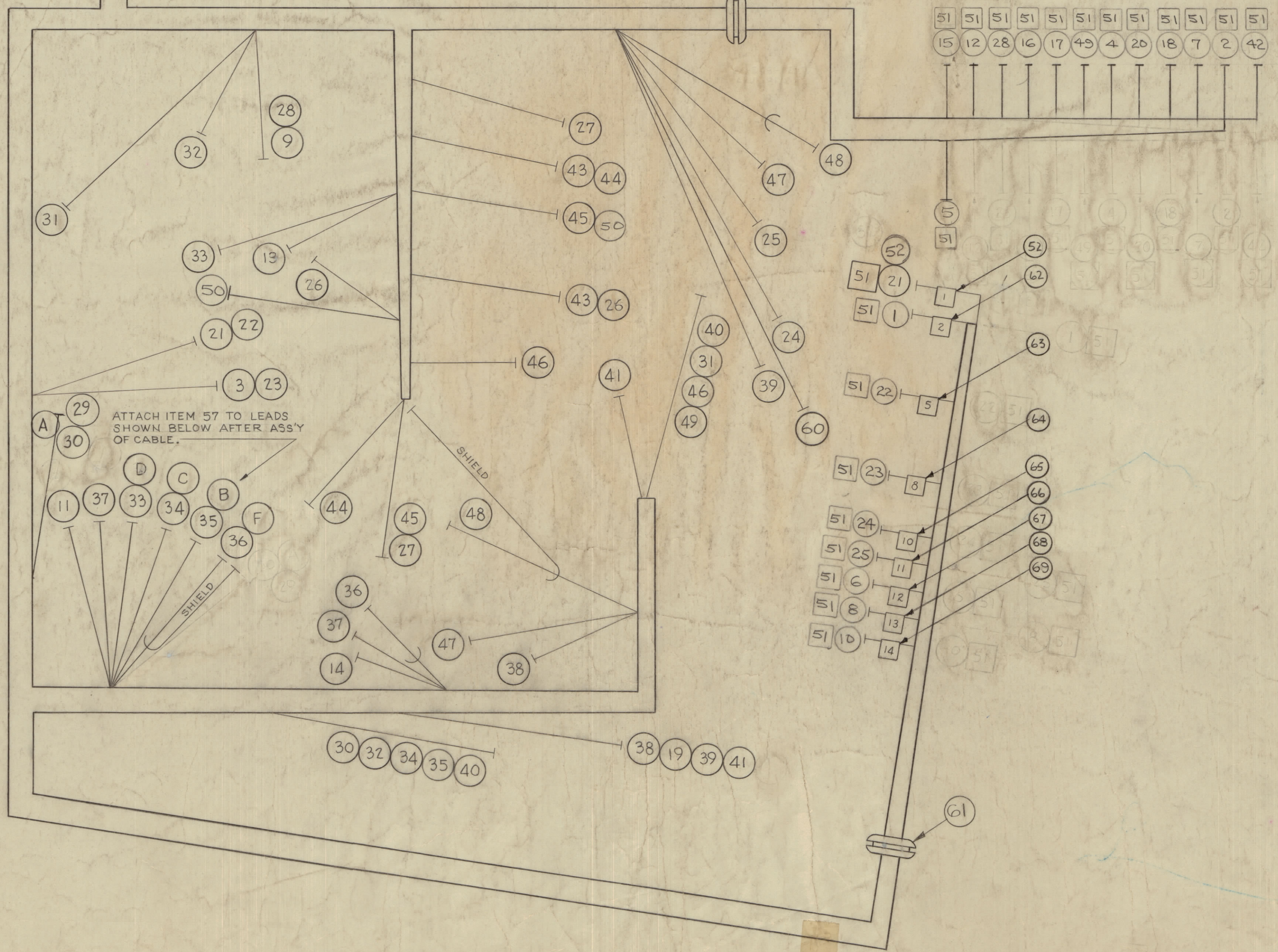
ABOVE SYMBOL DENOTES END OF SHIELD.

3 | SHIELD

ABOVE SYMBOL DENOTES END OF SHIELD, WHICH SHOULD BE TERMINATED AS SHOWN LEAVING EXCESS SHIELDING AS A PIGTAIL. TIN PIGTAIL 1/4".

WIRES SHOULD BE PLACED IN CABLE IN NUMERICAL SEQUENCE AS THEY APPEAR IN ITEM COLUMN.

SPACE LACING APPROX. 3/4" APART.



REQ. ITEM	PART NO.	DESCRIPTION	SYMBOL
1 63	LA101-14	MARKER, WIRE	
1 67	-12		
1 64	-11		
1 65	-10		
1 64	-8		
1 63	-5		
1 62	LA101-2	MARKER, WIRE	
2 61	EY-102-5	GROMMET, ELASTIC	
60	MWC22(7)U7	CABLE, INSULATED	VIOLET
55	CD-101-3MW	CORD LACING	
2 1/4 58	WL-100-7	WIRE, BUSS BAR 22 GA.	
1 57	MS3102A-16S-15	CONNECTOR	J401
1 56	MS3102A-28-11P	CONNECTOR	J405
55	BS-100	SOLDER, SOFT	
54	PX-100-1-148	INSULATION, SLEEVING	
53	PX-100-1-106	INSULATION, SLEEVING	
1 52	LA-101-1	MARKER, WIRE	
2 1 51	TE-120-2	LUGS	
50	MWC22(7)U90	CABLE, INSULATED	W/BLACK
19 1/2 49	MWC22(7)U95	CABLE, INSULATED	W/GREEN
34 48	MWC22(7)S09	CABLE, SHIELD FLEXIBLE	
33 1/2 47	MWC21(7)U7	CABLE, INSULATED	VIOLET
35 3/4 46	95		W/GREEN
8 1/2 45	90		W/BLACK
9 1/4 44	1		BROWN
7 3/4 43	1		BROWN
22 42	93		W/GRAND
11 3/4 41	2		RED
15 3/4 40	6		BLUE
37 1/4 39	93		W/GRAND
9 3/4 38	93		W/GRAND
10 37	MWC22(7)U90	CABLE, INSULATED	
9 1/2 36	MWC22(7)S09	CABLE, SHIELD FLEXIBLE	WHITE
9 35	MWC22(7)U PINK	CABLE, INSULATED	PINK
9 34	MWC22(7)U2		RED
26 1/4 33	MWC22(7)U91		W/BLACK

26 1/2 32	MWC22(7)U93	CABLE, INSULATED	W/BROWN
35 1/4 31	92		W/RED
14 3/4 30	6		BLUE
29	MWC22(7)U6		BLUE
14 28	MWC18(16)U0		BLACK
10 1/2 27	MWC22(7)U90		W/BLACK
26	U1		BROWN
41 1/2 25	U6		BLUE
43 24	MWC22(7)U5		GREEN
28 23	MWC18(16)U7		VIOLET
28 1/2 22	MWC22(7)U92		W/RED
30 3/4 21	95		W/GRAND
20 1/2 20	2		RED
24 1/2 19	MWC22(7)U2		RED
20 1/2 18	MWC18(16)U1		BROWN
19 17	MWC22(7)U5		GREEN
18 3/4 16	7		VIOLET
17 3/4 15	3		ORANGE
24 1/4 14	1		BROWN
16 1/2 13	91		W/GRAND
18 1/4 12	92		W/RED
19 1/2 11	90		W/BLACK
34 3/4 10	MWC22(7)U96		W/BLUE
19 1/2 9	MWC18(16)U0		BLACK
34 1/2 8	MWC22(7)U9		WHITE
21 7	MWC18(16)U5		GREEN
34 1/2 6	MWC22(7)U4		YELLOW
29 1/2 5	MWC22(7)U95		W/GREEN
20 1/4 4	MWC22(7)U4		YELLOW
15 3/4 3	MWC18(16)U7		VIOLET
21 1/4 2	7		VIOLET
39 1	2	CABLE, INSULATED	RED

ISSUE	ITEM	CHANGED FROM	DATE	CN. NO.	DRAFTS	CHECKER	ENG. APP.
F		ADD 11, 62 TO 69. DELETE 11, 21, 22, 23, 24, 25, 26, 27, 28, 29, 30, 31, 32, 33, 34, 35, 36, 37, 38, 39, 40, 41, 42, 43, 44, 45, 46, 47, 48, 49, 50, 51, 52, 53, 54, 55, 56, 57, 58, 59, 60, 61, 62, 63, 64, 65, 66, 67, 68, 69, 70, 71, 72, 73, 74, 75, 76, 77, 78, 79, 80, 81, 82, 83, 84, 85, 86, 87, 88, 89, 90, 91, 92, 93, 94, 95, 96, 97, 98, 99, 100.	11-21-58	172	RME		
E	1	ITEM 62 WAS W/101-4	11-21-58	3772			

TOLERANCES	SCALE:
ALL DEC. DIM. ± FRAC. DIM. ± ANGULAR DIM. ±	DRILL, PUNCH, COMMERCIAL STOCK SIZES AND MANUFACTURERS TOLERANCES ARE NOT INCLUDED.

REQ. PER UNIT	MODEL	PROJECT NO.	ASSY. NO.	DATE
1	RTF-2 I/C			11-10-58

THE TECHNICAL MATERIEL CORP.
MAMARONECK, NEW YORK

STOCK SIZE

MATERIAL WEIGHT PER FC. **CABLE, ASSEMBLY INTERCONNECT RTF-2 (W401)**

TYPE & TEMPER **JOHN C. BIELE**

HEAT TREAT. SPEC. **FILE**

FINISH & SPEC. NO. **CA-411**