





TMC NO.	WIRE NUMBER	COLOR	STRIP END NO. 1	STRIP END NO. 2	TERMINATION OF END NO. 1	FOR SCREW SIZE	TERMINATION OF END NO. 2	FOR SCREW SIZE	USED ON MODELS
CA409-146	MWC22(7)B2	RED	3/8"	3/8"	TE159-32959	6	TE156-34142	6	AP111(K6603)
CA409-147	MWC22(7)B9	WHITE	3/8"	3/8"	TE159-32959	6	TE156-34142	6	AP109(K6603)
CA409-148	HWC18(16)U9	WHITE	3/8"	3/8"	TE159-32960	10			RFC-1
CA409-149	HWC18(16)U TAN	TAN	3/8"	3/8"	TE120-2	6	TE156-34149	10	AP118(A2299)
CA409-150	HWC18(16)U92	WHITE/RED	3/8"	3/8"	TE120-2	6	TE156-34149	10	AP118(A2299)
CA409-151	MWC20(7)U0	BLACK	3/8	3/8	TE120-2	6	TE120-2	6	ECPA-1
CA409-152	MWC20(7)U1	BROWN	3/8	3/8	TE120-2	6	TE120-2	6	ECPA-1
CA409-153	MWC20(7)U2	RED	3/8	3/8	TE120-2	6	TE120-2	6	ECPA-1
CA409-154	MWC20(7)U3	ORANGE	3/8	3/8	TE120-2	6	TE120-2	6	ECPA-1
CA409-155	MWC20(7)U4	YELLOW	3/8	3/8	TE120-2	6	TE120-2	6	ECPA-1
CA409-156	MWC20(7)U6	BLUE	3/8	3/8	TE120-2	6	TE120-2	6	ECPA-1
CA409-157	MWC20(7)U7	VIOLET	3/8	3/8	TE120-2	6	TE120-2	6	ECPA-1
CA409-158	MWC20(7)U8	GREY	3/8	3/8	TE120-2	6	TE120-2	6	ECPA-1
CA409-159	MWC20(7)U9	WHITE	3/8	3/8	TE120-2	6	TE120-2	6	ECPA-1
CA409-160	MWC20(7)U90	WHITE/BLK	3/8	3/8	TE120-2	6	TE120-2	6	ECPA-1
CA409-161	MWC20(7)U91	WHITE/BRN	3/8	3/8	TE120-2	6	TE120-2	6	ECPA-1
CA409-162	MWC20(7)U92	WHITE/RED	3/8	3/8	TE120-2	6	TE120-2	6	ECPA-1
CA409-163	MWC20(7)U93	WHITE/ORN	3/8	3/8	TE120-2	6	TE120-2	6	ECPA-1
CA409-164	MWC20(7)U95	WHITE/GRN	3/8	3/8	TE120-2	6	TE120-2	6	ECPA-1
CA409-165	MWC20(7)U0	BLACK	3/8	3/8	TE120-2	6	NONE	N/A	ECPA-1
CA409-166	MWC20(7)U2	RED	3/8	3/8	TE120-2	6	NONE	N/A	ECPA-1
CA409-167	MWC20(7)U3	ORANGE	3/8	3/8	TE120-2	6	NONE	N/A	ECPA-1
CA409-168	MWC20(7)U90	WHT/BLACK	3/8	3/8	TE120-2	6	NONE	N/A	ECPA-1
CA409-169	MWC20(7)U93	WHT/ORN	3/8	3/8	TE120-2	6	NONE	N/A	ECPA-1
CA409-170	WL137-6	WHITE	5/8	5/8	TE197-2-50	1/2	TE197-2-50	1/2	GPT-10KLF
CA409-171	WL137-6	WHITE	5/8	5/8	TE197-2-50	1/2	TE197-2-25	1/4	GPT10KLF
CA409-172	MWC12(19)U0	BLACK	3/8	3/8	TE155-34170	10	NONE		APP-11
CA409-173	MWC12(19)U9	WHITE	3/8	3/8	TE155-34170	10	NONE		APP-11
CA409-174	MWC20(7)U8	GRAY	3/8	3/8	TE120-2	6	NONE	N/A	DDRR-506
CA409-175	MWC20(7)U98	WHT/GRAY	3/8	3/8	TE120-2	6	NONE	N/A	DDRR-506
CA409-176	MWC12(19)U0	BLACK	3/8	3/8	TE155-34170	10	TE159-32960	10	APP11
CA409-177	MWC12(19)U9	WHITE	3/8	3/8	TE155-34170	10	TE159-32960	10	APP11
CA409-178	MWC22(7)U0	BLACK	3/8	3/8	PL242-1	-	NONE	-	RTPA-1
CA409-179	MWC22(7)U0	BLACK	3/8	3/8	TE159-34161	10	TE159-34161	10	RTPA-1
CA409-180	MWC22(7)U0	BLACK	3/8	3/8	TE156-34149	10	NONE	-	RTPA-1
CA409-181	MWC22(7)U96	WHT/BLACK	3/8	3/8	TE159-34161	10	TE159-34161	10	RTPA-1
CA409-182	MWC22(7)U4	YELLOW	3/8	3/8	TE156-34149	10	NONE	-	RTPA-1
CA409-183	MWC22(7)U7	VIOLET	3/8	3/8	TE156-34149	10	NONE	-	RTPA-1
CA409-184	MWC22(7)U96	WHT/BLU	3/8	3/8	TE156-34149	10	NONE	-	RTPA-1
CA409-185	MWC22(7)U91	WHT/BRN	3/8	3/8	TE159-34161	10	TE159-34161	10	RTPA-1
CA409-186	WL140E18EE6	BLUE	3/8	3/8	TE156-32948	8	TE156-32949	10	RTTA-1
CA409-187	MWC22(7)U2	RED	3/8	3/8	TE156-34149	10	NONE	-	RTIA-1
CA409-188	MWC22(7)U0	BLACK	3/8	3/8	TE156-34149	10	NONE	-	RTIA-1
CA409-189	MWC22(7)U2	RED	3/8	3/8	TE156-34149	10	TE156-34149	10	RTIA-1
CA409-190	WL103-6	SHIELD			TE141-3	10	TE141-3	8	TSTE-10K(AM126)
CA409-191	MWC18(16)U90	WHT/BLK	3/8	3/8	TE120-2	6	TE156-34149	10	APP-4,5
CA409-192	MWC18(16)U90	WHT/BLK	3/8	3/8	TE156-34149	10	TE156-34149	10	APP-4,5
CA409-193	WL103-6	SHIELD			TE141-3	10	TE141-3	8	TSTE-10K(AM126)
CA409-194	MWC22(7)U92	WHT/RED	3/8	3/8	TE120-2	6	TE113-120	4	KIT275
CA409-195	MWC22(7)U95	WHT/GREEN	3/8	3/8	TE120-2	6	TE113-120	4	KIT275
CA409-196	MWC18(16)U0	BLACK	3/8	3/8	TE156-34149	10	NONE	-	LRCB-1
CA409-197	MWC18(16)U0	BLACK	3/8	3/8	TE156-34149	10	TE156-34149	10	LRCB-1
CA409-198	MWC18(16)U2	RED	3/8	3/8	TE156-34149	10	NONE	-	LRCB-1
CA409-199	MWC18(16)U2	RED	3/8	3/8	TE156-34149	10	TE156-34149	10	LRCB-1
CA409-200	WL103-4	SHIELD			TE141-3	10	NONE	-	STD.
CA409-201	MWC22(7)U4	YEL	3/8	3/8	TE120-2	6	NONE	-	TCP-1
CA409-202	MWC22(7)U9	WHITE	3/8	3/8	TE120-2	6	NONE	-	TCP-1
CA409-203	MWC22(7)U6	BLUE	3/8	3/8	TE120-2	6	NONE	-	TCP-1
CA409-204	MWC22(7)U5	GREEN	3/8	3/8	TE120-2	6	NONE	-	TCP-1
CA409-205	MWC22(7)U7	VIOLET	3/8	3/8	TE120-2	6	NONE	-	TCP-1
CA409-206*	MWC22(7)U6	BLUE	3/8	3/8	JJ219-18-9(PX830-22-1)	-	NONE	-	RTIH-1
CA409-207*	MWC22(7)U7	VIOLET	3/8	3/8	JJ219-18-9(PX830-22-1)	-	NONE	-	RTIH-1
CA409-208*	MWC22(7)U96	WHT/BLU	3/8	3/8	TE113-149(PX830-16-1)	6	NONE	-	RTIH-1
CA409-209	MWC16(19)U0	BLACK	3/8	3/8	TE159-32957	6	TE159-32957	6	APP-14
CA409-210	MWC16(19)U0	BLACK	3/8	3/8	TE159-32957	6	TE120-2	6	APP-14
CA409-211	MWC16(19)U9	WHITE	3/8	3/8	TE159-32957	6	TE159-32957	6	APP-14
CA409-212	MWC16(19)U9	WHITE	3/8	3/8	TE159-32957	6	NONE	-	APP-14
CA409-213	MWC16(19)U9	WHITE	3/8	3/8	TE120-2	6	NONE	-	APP-14
CA409-214	MWC16(19)U5	GREEN	3/8	3/8	TE120-2	6	NONE	-	APP-14
CA409-215	MWC16(19)U5	GREEN	3/8	3/8	TE159-32957	6	NONE	-	APP-14
CA409-216	MWC16(19)U9	GREEN	3/8	3/8	TE159-32957	6	NONE	-	APP-14
CA409-217	MWC22(7)U9	BLACK	3/8	3/8	TE120-2	6	TE141-3	10	API29
CA409-218	HWC10(37)B9	WHITE	3/8	3/8	TE155-34170	10	TE155-34171	1/4	BCTIOKA
CA409-219	HWC10(37)B92	WHT/BLK	3/8	3/8	TE155-34170	10	TE155-34171	1/4	BCTIOKA
CA409-220	HWC10(37)B92	WHT/RED	3/8	3/8	TE155-34170	10	TE155-34171	1/4	BCTIOKA
CA409-221	HWC10(37)B92	WHITE	3/8	3/8	TE155-34170	10	TE155-34173	3/8	BCTIOKA
CA409-222	HWC10(37)B90	WHT/BLK	3/8	3/8	TE155-34170	10	TE155-34173	3/8	BCTIOKA
CA409-223	HWC10(37)B92	WHT/RED	3/8	3/8	TE155-34170	10	TE155-34173	3/8	BCTIOKA
CA409-224	HWC22(7)U5	GRN	3/8	3/8	TE156-32951	8	TE156-32953	1/4	BCTIOKA
CA409-225	HWC22(7)U95	WHT/GRN	3/8	3/8	TE156-32951	8	TE156-32953	1/4	BCTIOKA
CA409-226	HWC20(7)U92	WHT/RED	3/8	3/8	TE156-32951	8	TE156-32953	1/4	BCTIOKA
CA409-227	HWC10(37)B9	WHITE	3/8	3/8	TE155-34171	1/4	TE155-34171	1/4	BCTIOKA
CA409-228	HWC10(37)B90	WHT/BLK	3/8	3/8	TE155-34171	1/4	TE155-34171	1/4	BCTIOKA
CA409-229	HWC10(37)B92	WHT/RED	3/8	3/8	TE155-34171	1/4	TE155-34171	1/4	BCTIOKA
CA409-230	WL137-1	WHITE	5/8	5/8	TE197-0-25	1/4	TE197-0-50	1/2	BCTIOKA
CA409-231	MWC22(7)U0	BLK	3/8	3/8	TE156-32953	1/4	TE156-32953	2/4	AM122
CA409-231	WL147-1	WHT/TER	3/8	3/8	TE155-34837	1/2	TE155-34852	10	PALA 10 K
CA409-232	WL100-1	BLUSS	3/8	3/8	TE155-34837	1/2	TE155-34171	1/4	PALA 10 K
CA409-233	WL139-2	-	3/8	3/8	TE156-32945	6	NONE	-	ATU-1K
CA409-234	WL103-7	SHIELD	N/A	N/A	TE141-5	5/16	TE141-5	5/16	SYM-5203
CA409-235	WL109-1	COPPER	N/A	N/A	TE141-4	1/4	NONE	N/A	VAS-1

REVISIONS									
ZONE	SYM	DESCRIPTION	DATE	E.M. NO.	DRAFT	CHKD	APPD		
-	BE	CA409-146, -147, -148 ADDED	9-8-64	12253	JB				
-	BF	SEE CHART 1 OF 2 REVISION "BF"	10-11-64	12276	JV				
G-	BG	CA409-149, -150 ADDED	11-20-64	12941	JV				
-	BH	CA409-151 THRU CA409-164 ADDED	12-16-64	13132	JV				
	BJ	CA409-165, -166, -167, -168, -169 ADD.	1-18-65	13289	JV				
	BK	CA409-170 THRU (-173) ADDED.	2-13-65	13462	JV				
	BL	CA409-174, 175 ADDED.	4-13-65	13778	JV				
	BM	CA409-176 & 177 ADDED.	5-6-65	13967	JV				
	BN	CA409-178 THRU-185 ADDED	5-19-65	14786	JV				
	BP	179 THRU 185 W/TE159-34161	10-26-65	14920	JV				
-	BQ	LINE CA409-186 ADDED	10-26-65	15005	JV				
-	BR	LINE CA409-187 THRU-195 ADDED	10-26-65	15005	JV				
	BS	CA409-196, 197, 198, 199 ADDED	11-16-65	15201	JV				
	BT	ADD. CA409-200; REV. 180, 182, 183 & 184	2-4-66	15605	JV				
	BV	IT. 201 TO 215 ADDED (SEE SHEET NO. 1)	3-28-66	16014	HIA				
	BW	LINE CA409-216 ADDED	4-29-66	16151	JV				
	BX	SEE SHEET	6-7-66	16349	N.C.				
	BY	CA409-217 THRU CA409-229 ADDED	6-20-67	18276	L.A.K.				
	BZ	CA409-230 ADDED	8-28-67	18465	H.G.				
	CA	ADD. - 231 AND - 232	9-25-67	19041	JV				
	CB	ADD. CA409-233, 234, 235	5/13/68	19852	GE				
	CC	CA109-100 TE144-4 WAS 144-3	7-11-75	21230	G.D.L.				
			11-27-84		G.O.T.				

CA-409

**STANDARD DRAWING**

**NOTES**

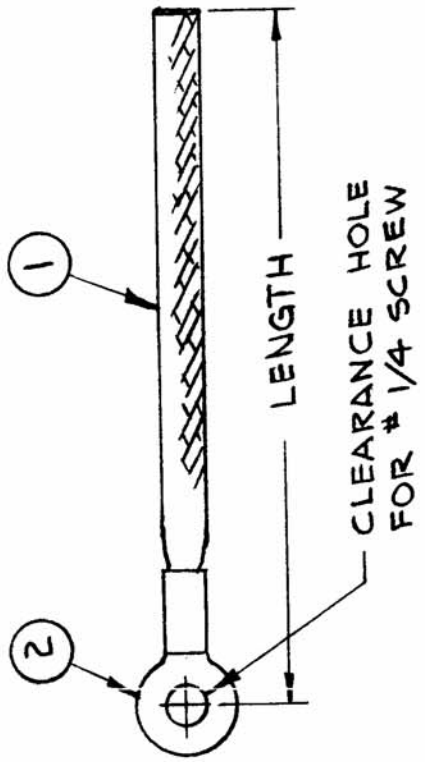
QTY./UNIT	MODEL USED ON	ARRY. NO.
SCALE	CODE	

REQ'D.	ITEM	PART NUMBER	DESCRIPTION	SYMBOL
LIST OF MATERIAL				
THE TECHNICAL MATERIEL CORP. MAMARONECK, NEW YORK				
TITLE CABLE ASS'Y., JUMPER				
UNLESS OTHERWISE SPECIFIED DIMENSIONS ARE IN INCHES AND INCLUDE CHEMICALLY APPLIED OR PLATED FINISHES				
DRAWN	DATE	FINAL APPROVAL	DATE	
CHKD.	DATE			
ELECT. DES.	DATE	CA-409		
MECH. DES.	DATE	SHEET 2 OF 2		



REQ. PER UNIT	MODEL	USED ON	CA-409-66
		ASSY. NO.	
		DATE	

TYPE DESIGNATION TO BE IN FOLLOWING FORM



BASIC TMC PART NO. CA-409-66 - 0.00 LENGTH DESIRED IN INCHES



REQ. ITEM	PART NO.	DESCRIPTION	SYMBOL
1	TE-141-4	TERMINAL, LUG	
2	WL-103-4	BRAID, WIRE, FLAT, 1/4	
STOCK SIZE		THE TECHNICAL MATERIEL CORP. MAMARONECK, NEW YORK	
MATERIAL		LEAD, ELECTRICAL	
TYPE & TEMPER	HEAT TREAT. SPEC.	DRAWN	FINAL APPROVAL
		<i>JNY</i>	<i>JLD 7/31/63</i>
FINISH & SPEC. NO.	ELEC. DES. APP.	MECH. DES. APP.	CA-409-66
			<i>MM 8/1/63</i>

UNLESS OTHERWISE SPECIFIED DIMENSIONS ARE IN INCHES AND INCLUDE CHEMICALLY APPLIED OR PLATED FINISHES

SCALE: NONE

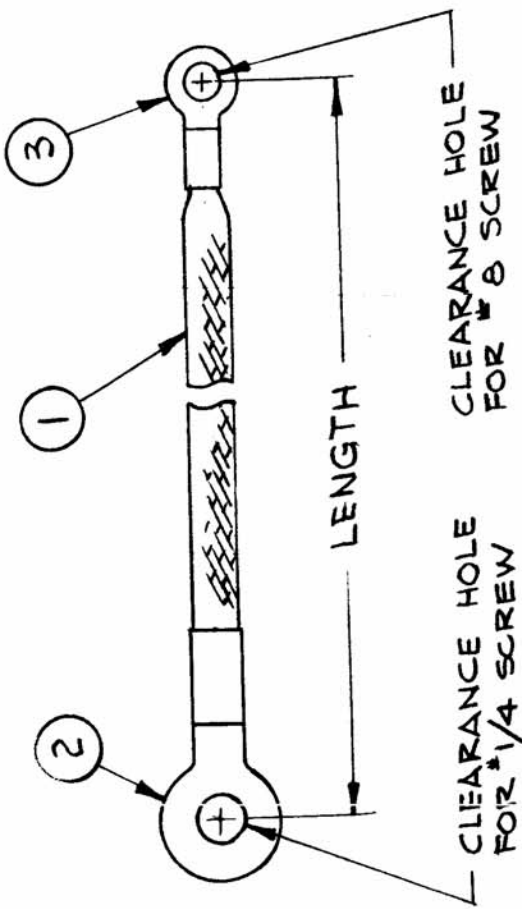
TOLERANCES: .X ± .05, .XX ± .01, .XXX ± .005

FRACTIONS: ± 1/64, ANGLES: ± 0° 30'

REQ. PER UNIT	MODEL	USED ON ASSY. NO.	DATE	CA-409-67
---------------	-------	-------------------	------	-----------

TYPE DESIGNATION TO BE IN FOLLOWING FORM

CA-409-67 - 0.00  
 BASIC TMC PART NO. LENGTH DESIRED IN INCHES



REQ. ITEM	PART NO.	DESCRIPTION	SYMBOL
1	3 TE-141-2	TERMINAL, LUG	
1	2 TE-141-4	TERMINAL, LUG	
	1 WL-103-5	BRAID, WIRE, FLAT, 1/4	
STOCK SIZE		THE TECHNICAL MATERIEL CORP. MAMARONECK. NEW YORK	
MATERIAL		LEAD, ELECTRICAL	
TYPE & TEMPER	HEAT TREAT. SPEC.	DRAWN	CHECKED
FINISH & SPEC. NO.		ELEC. DES. APP. MECH. DES. APP.	

SYM	DESCRIPTION	DATE	CH. NO.	DRAFTS	CHECKER	ENG. APP.
UNLESS OTHERWISE SPECIFIED DIMENSIONS ARE IN INCHES AND INCLUDE CHEMICALLY APPLIED OR PLATED FINISHES						
SCALE NONE						
TOLERANCES						
FRACTIONS ± 1/64						
ANGLES ± 0° 30'						
DECIMALS .X ± .05						
.XX ± .01						
.XXX ± .005						



CA-409-69

USED ON  
ASBY. NO.

MODEL

REQ. PER UNIT

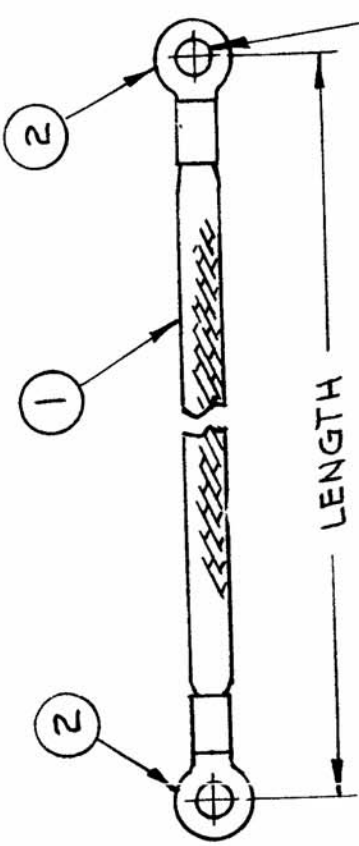
DATE

TYPE DESIGNATION TO BE IN FOLLOWING FORM

CA-409-69-0.00

LENGTH DESIRED  
IN INCHES

BASIC TMC PART NO.



CLEARANCE HOLE  
FOR #10 SCREW  
(BOTH ENDS.)



2	2	TE-141-3	TERMINAL LUG	SYMBOL
	1	WL-103-4	BRAID, WIRE, FLAT, 1/4	
		PART NO.	DESCRIPTION	
		STOCK SIZE	THE TECHNICAL MATERIEL CORP. MAMARONECK, NEW YORK	
		MATERIAL	LEAD, ELECTRICAL	
		TYPE & TEMPER	DRAWN	
		HEAT TREAT. SPEC.	CHECKED	
		FINISH & SPEC. NO.	ELEC. DES. APP.	
			MECH. DES. APP.	
			FINAL APPROVAL	

SYM	DESCRIPTION	DATE	CH. NO.	DRAFTS	CHECKER	ENG. APP.
UNLESS OTHERWISE SPECIFIED DIMENSIONS ARE IN INCHES AND INCLUDE CHEMICALLY APPLIED OR PLATED FINISHES						
SCALE NONE						
TOLERANCES						
DECIMALS .X ± .05 .XX ± .01 .XXX ± .005						
FRACTIONS ± 1/64 ANGLES ± 0° 30'						
CODE NONE						