

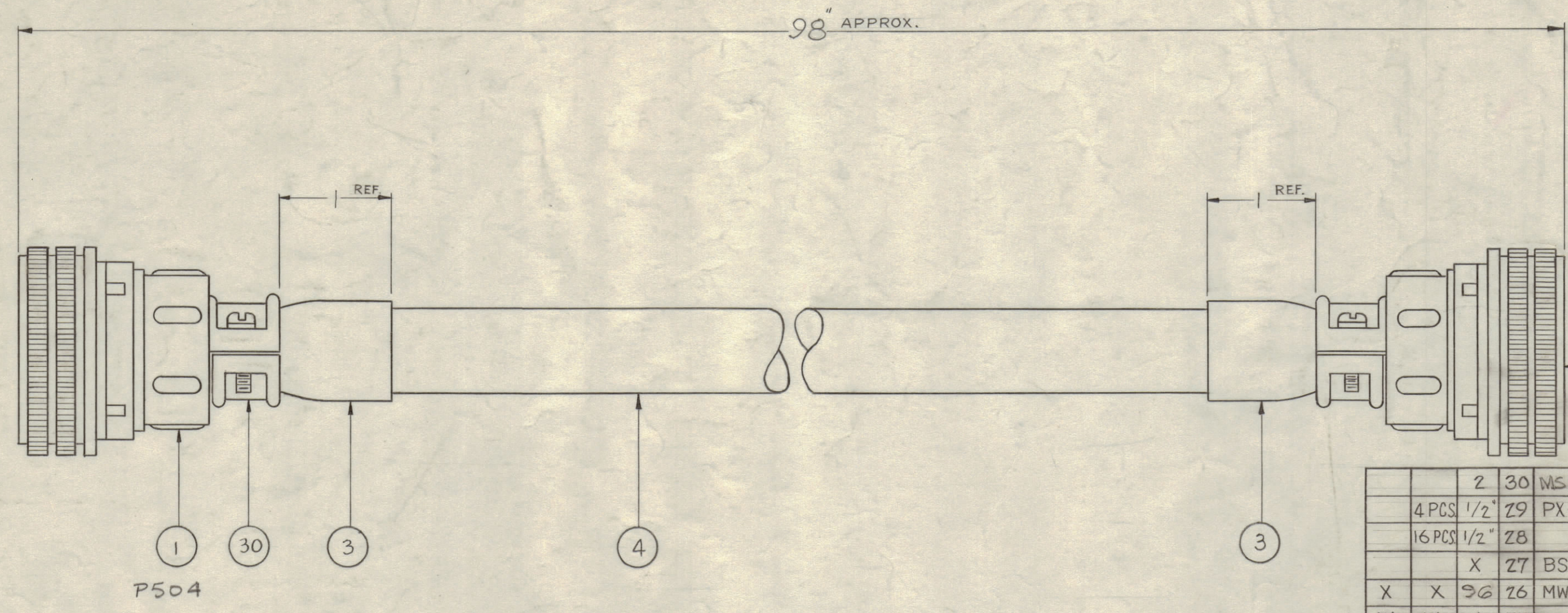
IF IT IS FOUND DESIRABLE TO CHANGE ANY TOLERANCE OR OTHER DETAIL SPECIFIED ON THIS DRAWING NOTIFY THE PURCHASER PROMPTLY.

MAXIMUM ALLOWABLE TOLERANCES HAVE BEEN DETERMINED AND DEVIATIONS WILL BE CAUSE FOR REJECTION. REMOVE ALL BURRS AND SHARP EDGES

NOTICE TO PERSONS RECEIVING THIS DRAWING

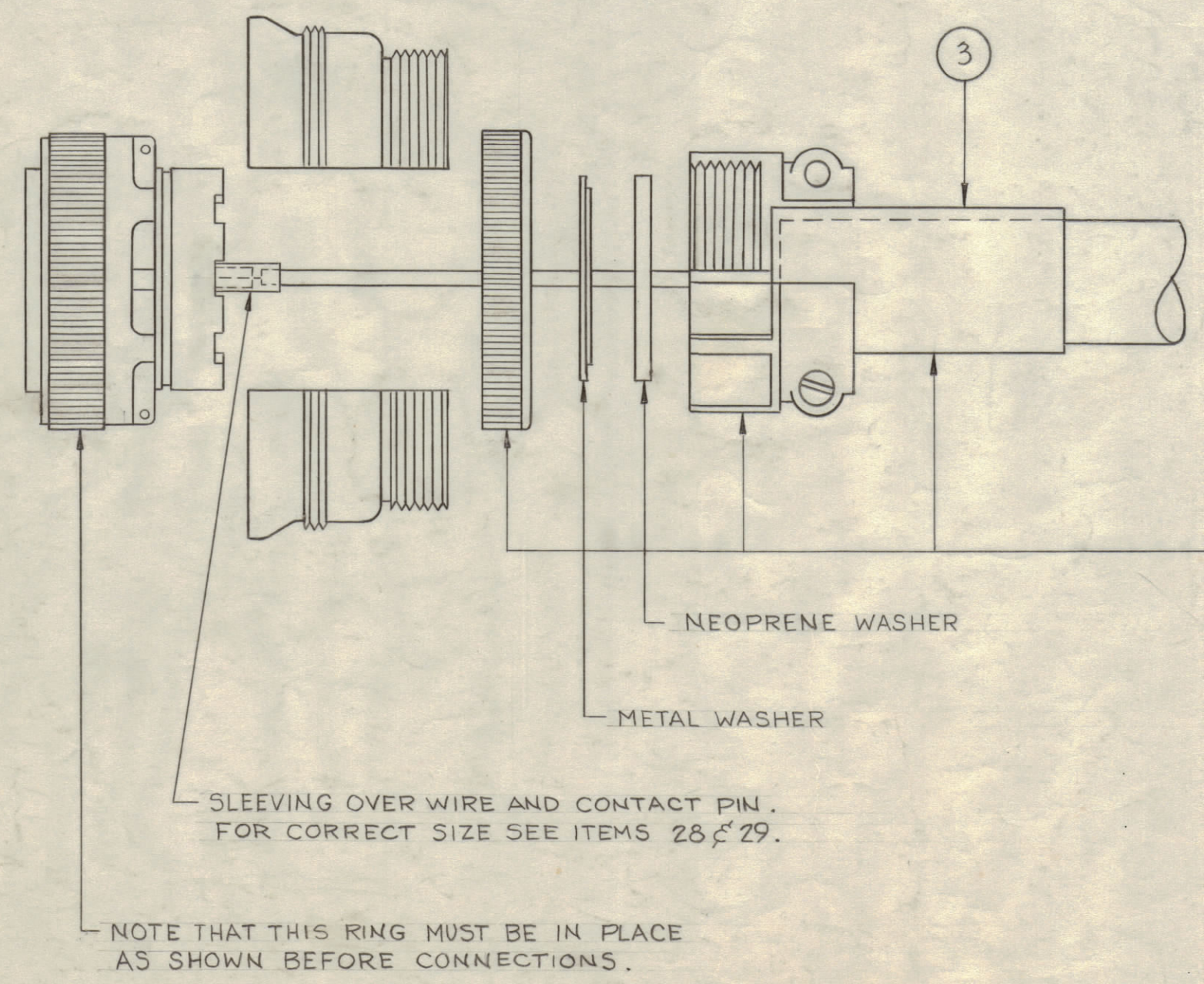
THE TECHNICAL MATERIEL CORPORATION claims proprietary right in the material disclosed herein. This drawing is issued in confidence for engineering information only and may not be reproduced or used to manufacture anything shown herein without permission from THE TECHNICAL MATERIEL CORPORATION to the user. This drawing is loaned for mutual assistance and is subject to recall at any time.

Property of:
THE TECHNICAL MATERIEL CORPORATION
MAMARONECK, NEW YORK



		2	30	MS3057-16	CLAMP, CABLE	
	4 PCS	1/2"	Z9	PX-100-1-148	INSULATION, SLEEVING #7	
	16 PCS	1/2"	Z8			#10
		X	Z7	BS-100	SOLDER, SOFT	
X	X	96	Z6	MWC16(19)U8	CABLE, INSULATED	GREY
W	W		Z5			VIOLET
V	V		Z4			ORANGE
U	U		Z3	MWC 22(7)U95		WH/BRN
T	T		Z2	MWC 16(19)U9		WHITE
S	S		Z1	MWC 22(7)U91		WH/BRN

CA-408



R	R	96	20	MWC22(7)U93	CABLE, INSULATED	WH/OR.		
P	P		19	MWC22(7)U91		WH/VIO		
N	N		18	MWC22(7)U96	CABLE, INSULATED	WH/BLU		
M	M		17	MWC16(19)U0		BLACK		
L	L		16	MWC12(19)U90	WIRE, TYPE WL	WH/BLK		
K	K		15	MWC16(19)U5	CABLE, INSULATED	GREEN		
J	J		14			BROWN		
I	I		13	MWC22(7)U4		YELLOW		
H	H		12			VIOLET		
G	G		11			WH/YEL.		
F	F		10			ORANGE		
E	E		9			GREEN		
D	D		8			BLUE		
C	C		7		PINK	PINK		
B	B		6			RED		
A	A		5			WH/RED		
			92	4	PX-100-1-625	SLEEVING		
			2	3	MS3420-16A	TUBING		
			1	2	MS3106B-28-11P	CONNECTOR, PLUG	P503	
FROM ITEM	TO ITEM			1	1	MS3106B-28-11S		P504

REQ. ITEM	PART NO.	DESCRIPTION	SYMBOL
THE TECHNICAL MATERIEL CORP. MAMARONECK, NEW YORK			
CABLE, P.S. TO R.F.			
CAB-7 (W501)			
STOCK SIZE		JOHN C. BIELE	
MATERIAL		DRAWN	
WEIGHT PER PC.		ELEC. DES. APP.	
TYPE & TEMPER		MECH. DES. APP.	
HEAT TREAT. SPEC.		CHECKED	
FINISH & SPEC. NO.		FINAL APPROVAL	

ISSUE	ITEM	CHANGED FROM	DATE	CN. NO.	DRAFTS	CHECKER	ENG. APP.
TOLERANCES							
SCALE:							
ALL OTHERS		DEC. DIM. ±	DRILL, PUNCH, COMMERCIAL STOCK				
		FRAC. DIM. ±	SIZES AND MANUFACTURERS				
		ANGULAR DIM. ±	TOLERANCES ARE NOT INCLUDED.				

1	CAB-7			11-4-58
REQ PER UNIT	MODEL	PROJECT NO.	ASSY. NO.	DATE
USED ON				