

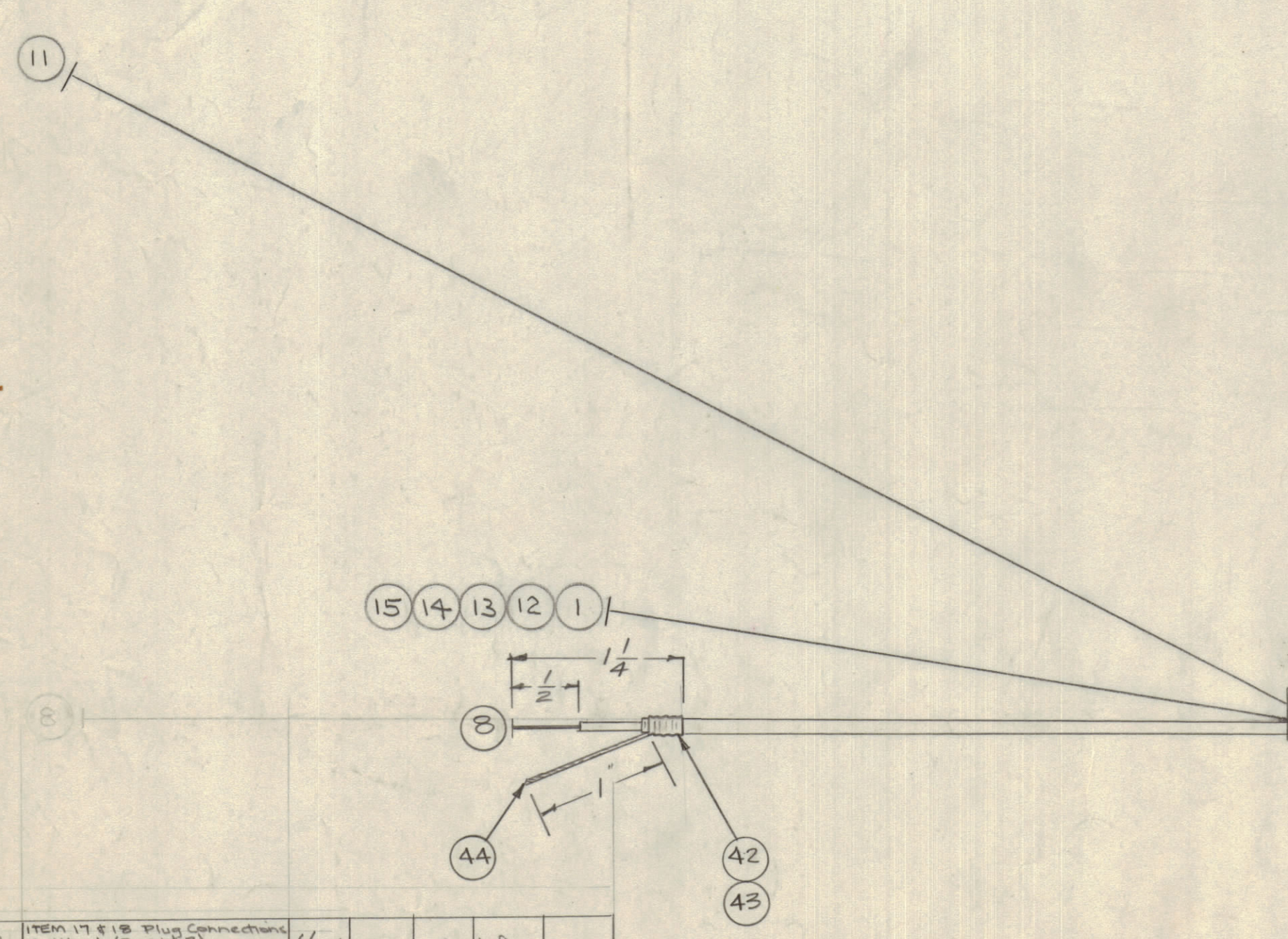
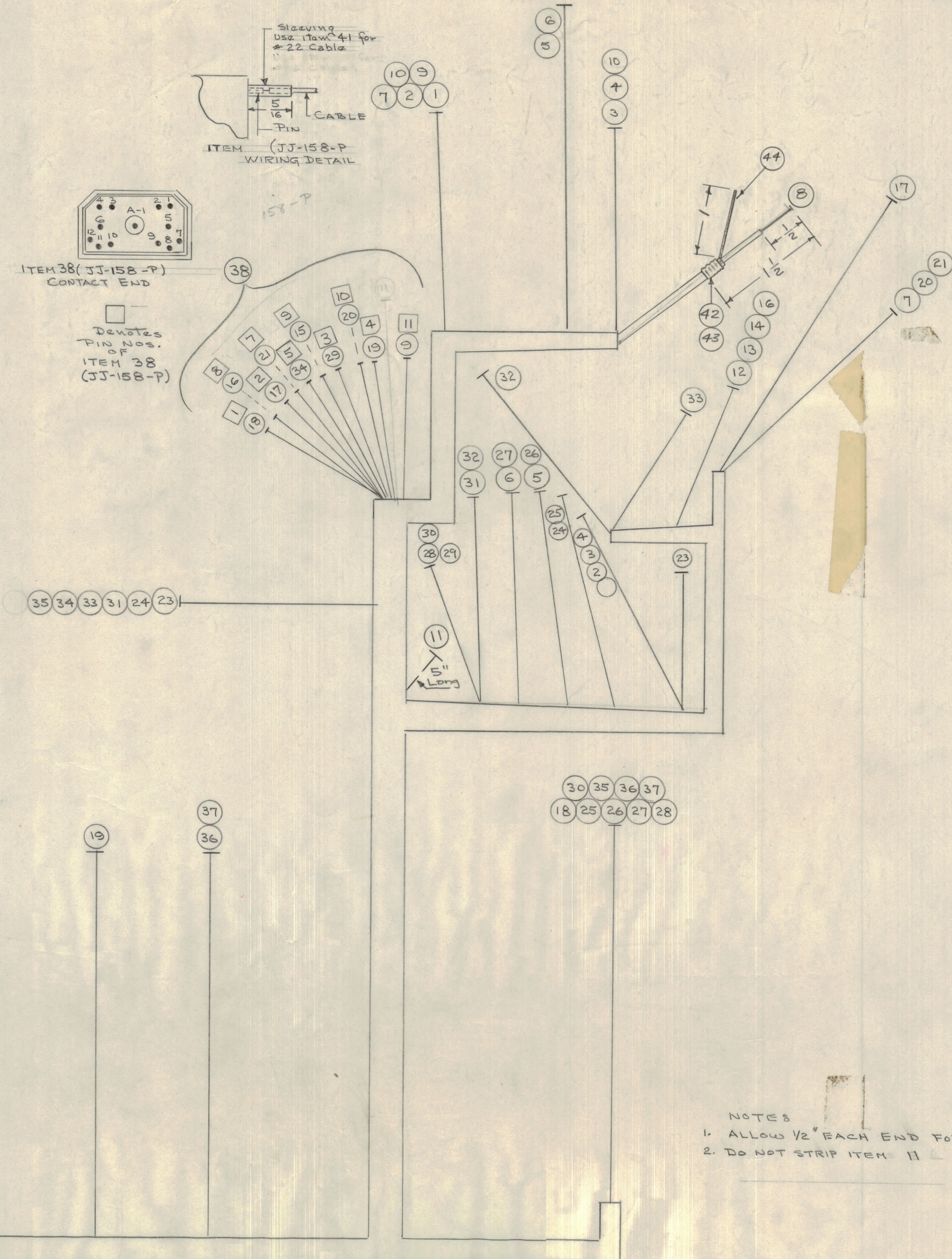
IF IT IS FOUND DESIRABLE TO CHANGE ANY TOLERANCE OR OTHER DETAIL SPECIFIED ON THIS DRAWING NOTIFY THE PURCHASER PROMPTLY.

MAXIMUM ALLOWABLE TOLERANCES HAVE BEEN DETERMINED AND DEVIATIONS WILL BE CAUSE FOR REJECTION. REMOVE ALL BURRS AND SHARP EDGES

NOTICE TO PERSONS RECEIVING THIS DRAWING

THE TECHNICAL MATERIEL CORPORATION claims proprietary right in the material disclosed herein. This drawing is issued in confidence for engineering information only and may not be re-produced or used to manufacture any thing shown hereon without permission from THE TECHNICAL MATERIEL CORPORATION to the user. This drawing is loaned for mutual assistance and is subject to recall at any time.

Property of:
THE TECHNICAL MATERIEL CORPORATION
MAMARONECK, NEW YORK



NOTES
1. ALLOW 1/2" EACH END FOR STRIPPING
2. DO NOT STRIP ITEM 11 & 12

REQ. ITEM	PART NO.	DESCRIPTION	SYMBOL	
2 1/2	44	WL-103-1	SHIELD, FLEXIBLE	
2	43	CU-101-10	FERRULE, OUTER	
2	42	CU-101-9	FERRULE, INNER	
4	PX-100-1-106	SLEEVING, INSULATION size #10		
40	BS-100	SOLDER, SOFT		
39	CD-101-1-HW	CORD, LACING		
38	JJ-158-P	CONNECTOR, RECEPTACLE	Malz	
18 3/4	37	MWC22(7)UC	CABLE, INSULATED, STRANDED	BLK
18 3/4	36			RED
2 3	35			WHITE
8 1/4	34			BROWN
16 1/2	33	MWC16(15)UB		WHITE
14 1/2	32	MWC22(7)UC		YELLOW
10 3/4	31			GRAY
21 1/2	30			PINK
10 1/4	29			PINK
21 1/4	28			7
22 3/4	27			VI.
23 1/2	26			VI.
24 1/2	25			WH/
12 3/4	24			YLG
12 1/4	23			WH/
	22			BRN
	21			CRG.
17 3/4	20			GRN
17 1/2	19			GRN
23 3/4	18			WH/
19	17			GRN
16 1/2	16			GRN
26 1/4	15			YEL
31 1/2	14			YEL
31 1/2	13			RED
31 1/2	12			RED
33	11	WI-126-1	WIRE, SINGLE COND. (HEAVY)	WH/
10 1/4	10	MWC22(7)UC	CABLE, INSUL. STRANDED	RED
9 3/4	9			WH
37 1/2	8	RG-188/U	CABLE, MINATURE, COAXIAL	
21 3/4	7	MWC22(7)UC	CABLE, INSUL. STRANDED	GRY
18 1/2	6			WH/
19 1/4	5			BRN
20	4			WH/
20	3			BRN
18	2			GRY
31	1			GRY

ISSUE	ITEM	CHANGED FROM	DATE	CN. NO.	DRAFTS	CHECKER	ENG. APP.
A	4	ITEM 17 & 18 Plug Connections Deleted (Dns 12)	4/27/58	399	16	Jde	Jde
	3	ONE END OF ITEM 11 MOVED					
	2	ITEMS 2, 3, 4, 4 Added					
	1	ITEM 2 WAS WL-103-1-106					

ALL DEC. DIM. ±
FRAC. DIM. ±
ANGULAR DIM. ±

DRILL, PUNCH, COMMERCIAL STOCK SIZES AND MANUFACTURERS TOLERANCES ARE NOT INCLUDED.

REQ PER UNIT	MODEL	PROJECT NO.	ASSY. NO.	DATE
1	RFA	PAL-350		5/26/58

STOCK SIZE

MATERIAL WEIGHT PER FE.

TYPE & TEMPER

HEAT TREAT. SPEC.

FINISH & SPEC. NO.

THE TECHNICAL MATERIEL CORP.
MAMARONECK, NEW YORK

CABLE, MAIN
MODEL RFA-1

DRAWN: HJA
ELEC. DES. APP.: Jde
MECH. DES. APP.: Jde

CHECKED: 16
FINAL APPROVAL: H.J.J.

CA-376 A