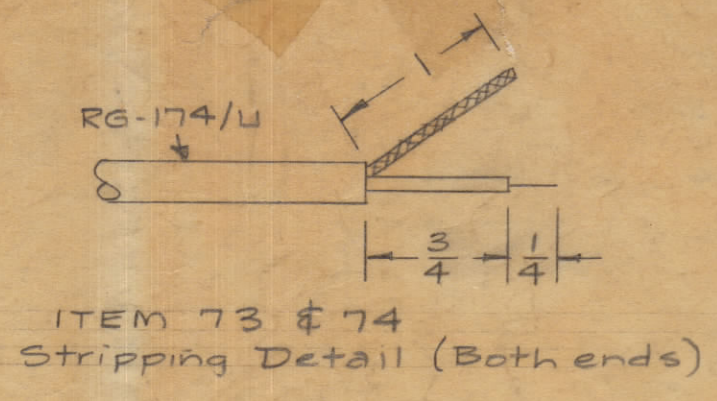
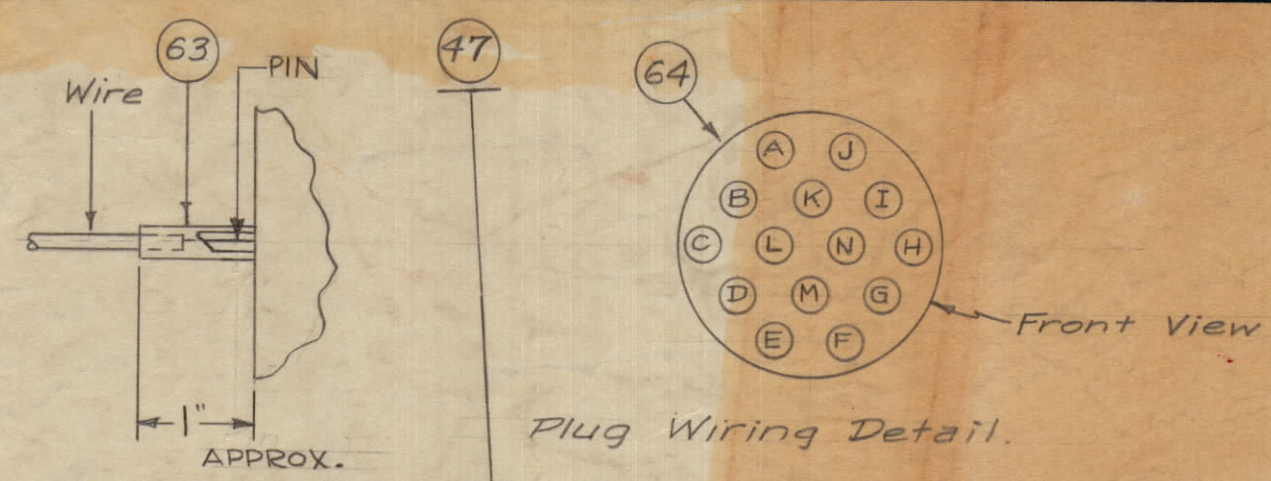
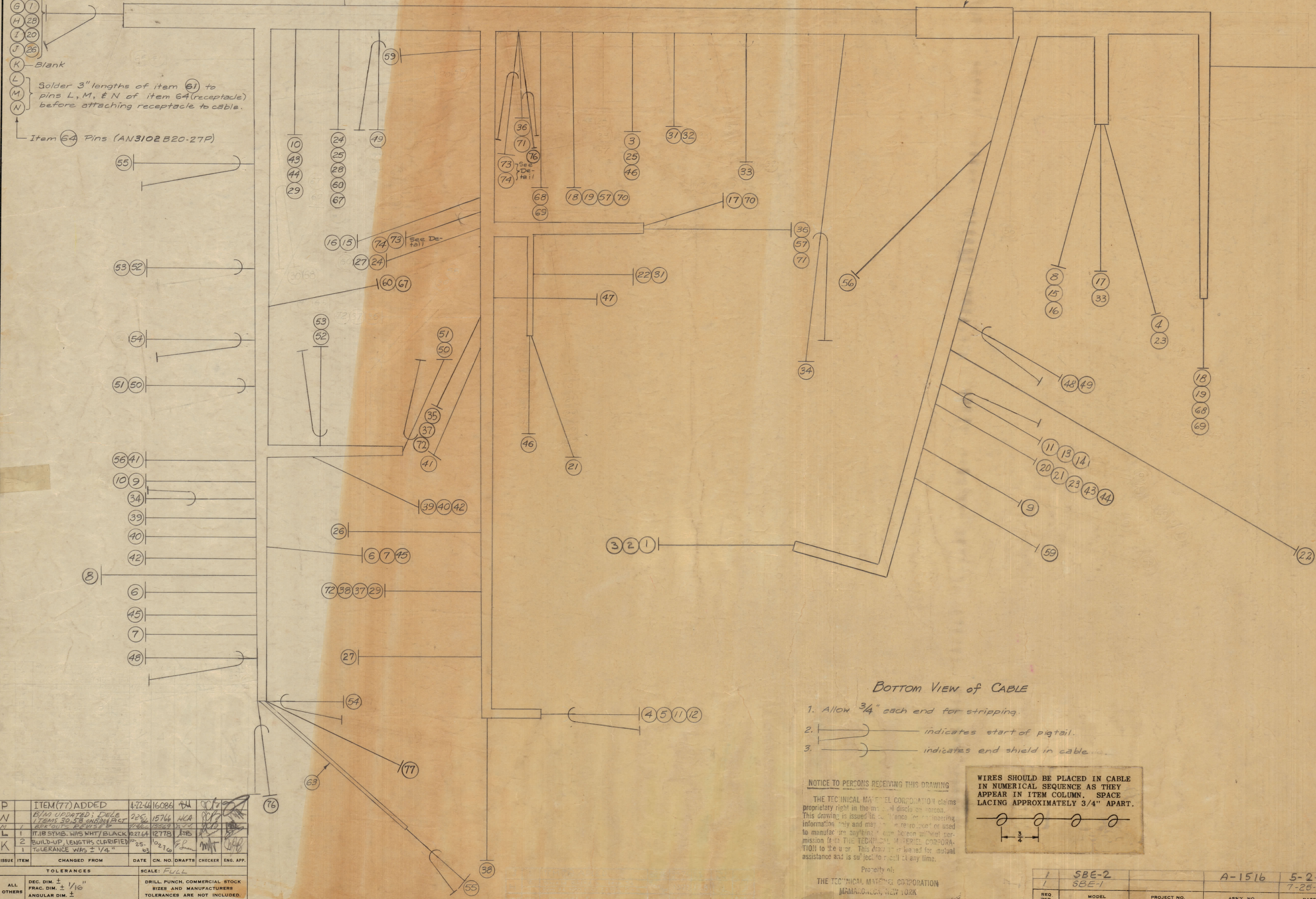


IF IT IS FOUND DESIRABLE TO CHANGE ANY TOLERANCE OR OTHER DETAIL SPECIFIED ON THE DRAWING NOTIFY THE PURCHASER PROMPTLY.

MAXIMUM ALLOWABLE TOLERANCES HAVE BEEN DETERMINED AND DEVIATIONS WILL BE CAUSE FOR REJECTION. REMOVE ALL BURRS AND SHARP EDGES.



- A 35
 - B 32 TT
 - C 2
 - D 12
 - E 13
 - F 14
 - G 1
 - H 28
 - I 20
 - J 26
 - K Blank
 - L Solder 3" lengths of item 61 to pins L, M, & N of item 64 (receptacle) before attaching receptacle to cable.
 - M
 - N
- Item 64 Pins (AN3102B20-27P)



REQ. ITEM	PART NO.	DESCRIPTION	SYMBOL
18 1/4	77	MWC22(7)U-91	CABLE, INSULATED
25	76	RG-174/U	CABLE, COAX
2	75	PX-104-1-.500	Insulation, Sleeving
10 1/4	74	RG-174/U	Cable, RF
10 1/4	73	RG-174/U	Cable, RF
11 1/2	72	MWC22(7)U-0	Cable, Insulated
14 3/8	71	MWC22(7)U-93	
15 1/2	70	MWC22(7)U-92	
25 1/2	69	MWC22(7)U-3	
25	68	MWC22(7)U-3	
13 3/4	67	MWC22(7)U-2	Cable, Insulated
66	DELETED	(was MWC22(7)U-4)	
X	65	BS-100	Solder, Soft
1	64	MS3102A20-27P	Connector, Receptacle, Male
13	63	PX-100-1-.106	Insulation, Sleeving
X	62	CD-101-1-MW	Cord, Lacing
3 1/2	61	MWC22(7)U-0	Cable, Insulated
13 3/4	60	MWC22(7)U-92	
27 1/4	59	MWC22(7)U-95	
58	DELETED		
16 1/2	57	MWC22(7)U-90	
34 1/2	56	MWC22(7)U-95	
20 3/4	55	MWC24(7)SJ9	Shielded
13 1/2	54	MWC24(7)SJ9	" white
11 1/2	53	MWC24(7)SJ9	" white
11 1/2	52	MWC24(7)SJ9	" white
10 1/2	51	MWC24(7)SJ4	" yellow
10 1/2	50	MWC24(7)SJ4	" yellow
25 3/4	49	MWC24(7)SJ5	" green
41 1/2	48	MWC24(7)SJ9	" white
14 1/2	47	MWC22(7)U-4	Yellow/red
15 1/2	46	MWC22(7)U-2	wh/or
7 1/2	45	MWC22(7)U-93	wh/blue
28 3/4	44	MWC22(7)U-96	
28 1/2	43	MWC22(7)U-6	
9 5/8	42	MWC22(7)U-94	Blue
26	41	MWC22(7)U-95	Yellow
9	40	MWC22(7)U-4	Yellow
8 1/2	39	MWC22(7)U-3	Orange
9	38	MWC22(7)U-1	Brn.
1 1/4	37	MWC22(7)U-1	Brn
1 1/4	36	MWC22(7)U-93	White
18 1/2	35	MWC20(7)U-1	Shielded
3 3/4	34	MWC22(7)SJ2	Red
16 1/4	33	MWC22(7)U-95	White
4 1/2	32	MWC22(7)U-91	White
15 1/2	31	MWC22(7)U-91	White
30	DELETED		
21 1/2	29	MWC22(7)U-0	BIK.
9 3/4	28	MWC22(7)U-2	Red
16	27	MWC22(7)U-2	Red
23 3/8	26	MWC22(7)U-6	Blue
11 3/8	25	MWC22(7)U-2	Red
13 3/4	24	MWC22(7)U-2	Red
18 3/4	23	MWC22(7)U-6	Blue
34 3/4	22	MWC20(7)U-91	White
3 1/2	21	MWC22(7)U-6	Blue
31 3/8	20	MWC22(7)U-96	White
24 1/8	19	MWC22(7)U-92	White
24 1/2	18	MWC22(7)U-91	White
27 1/2	17	MWC22(7)U-5	BROWN
25 1/2	16	MWC22(7)U-93	Green
25 1/8	15	MWC22(7)U-92	White
31 1/2	14	MWC22(7)SJ9	Shielded
37 1/4	13	MWC22(7)SJB	Shielded
27 3/4	12	MWC22(7)U-7	Grey
39 1/4	11	MWC22(7)SJB	Shielded
76	10	MWC22(7)U-97	White
39 1/2	9	MWC22(7)U-97	White
57 3/4	8	MWC22(7)U-96	White
8	7	MWC22(7)U-4	Blue
7	6	MWC22(7)U-3	Yellow
36 1/2	5	MWC22(7)U-93	Orange
36 3/4	4	MWC22(7)U-3	White
27 1/4	3	MWC22(7)U-2	Orange
37	2	MWC20(7)U-50	Red
37	1	MWC22(7)U-92	White

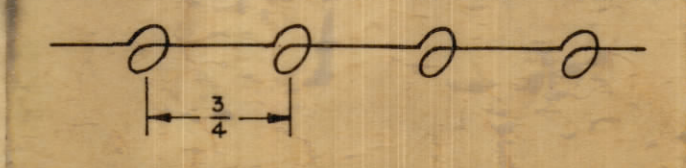
BOTTOM VIEW of CABLE

1. Allow 3/4" each end for stripping.
2. ——— indicates start of pigtail.
3. ——— indicates end shield in cable.

NOTICE TO PERSONS RECEIVING THIS DRAWING

THE TECHNICAL MATERIEL CORPORATION claims proprietary right in the material disclosed herein. This drawing is issued in confidence and engineering information only and may not be reproduced or used to manufacture anything in any form without permission from THE TECHNICAL MATERIEL CORPORATION to the user. This drawing is loaned for mutual assistance and is subject to recall at any time.

WIRES SHOULD BE PLACED IN CABLE IN NUMERICAL SEQUENCE AS THEY APPEAR IN ITEM COLUMN. SPACE LACING APPROXIMATELY 3/4" APART.



ISSUE	ITEM	CHANGED FROM	DATE	CN. NO.	DRAFTS	CHECKER	ENG. APP.
P	ITEM(77) ADDED		4-22-64	16086	HA		
N	B/M UPDATED; DELETED ITEMS 30, 31, 32, 33, 34, 35, 36, 37, 38, 39, 40, 41, 42, 43, 44, 45, 46, 47, 48, 49, 50, 51, 52, 53, 54, 55, 56, 57, 58, 59, 60, 61, 62, 63, 64, 65, 66, 67, 68, 69, 70, 71, 72, 73, 74, 75, 76, 77, 78, 79, 80, 81, 82, 83, 84, 85, 86, 87, 88, 89, 90, 91, 92, 93, 94, 95, 96, 97, 98, 99, 100		2-25-64	15766	HLA		
M	REVISED		1-23-64	15363	HLA		
L	IT-18 SYMB. WAS WHT/BLACK		12-14-63	12778	HLA		
K	BUILD-UP, LENGTHS CLARIFIED		10-27-63	10270	HLA		
J	TOLERANCE WAS ± 1/4"		6-3		HLA		

ALL	DEC. DIM. ±	FRAC. DIM. ±	ANGULAR DIM. ±	DRILL, PUNCH, COMMERCIAL STOCK SIZES AND MANUFACTURERS TOLERANCES ARE NOT INCLUDED.
				SCALE: FULL

REQ. PER UNIT	MODEL	PROJECT NO.	ASSY. NO.	DATE
1	SBE-2		A-1516	5-2-58
1	SBE-1			7-25-57

THE TECHNICAL MATERIEL CORP. MAMARONECK, NEW YORK			
CABLE, MAIN			
SBE-1			
TYPE & TEMPER	HEAT TREAT. SPEC.	FINISH & SPEC. NO.	
16 7-25-57			
DRAWN	ELEC. DES. APP.	MECH. DES. APP.	
MECH. DES. APP.			
CHECKED			
FINAL APPROVAL			
CA-347 P			