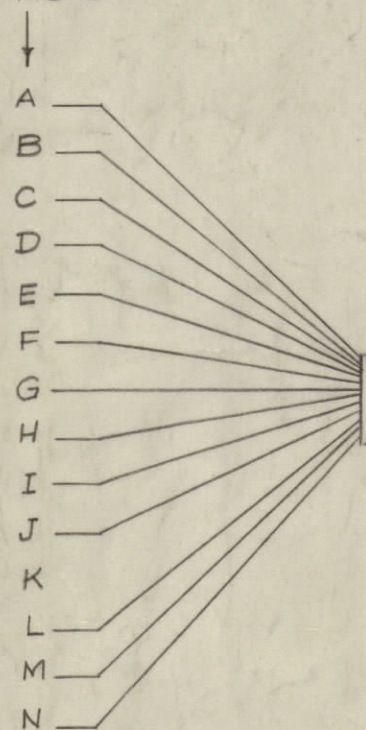


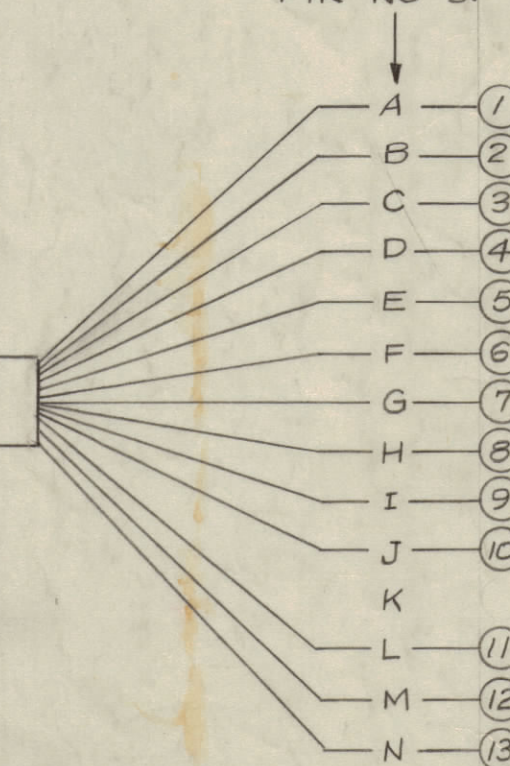
IF IT IS FOUND DESIRABLE TO CHANGE ANY TOLERANCE OR OTHER DETAIL SPECIFIED ON THIS DRAWING NOTIFY THE PURCHASER PROMPTLY.

MAXIMUM ALLOWABLE TOLERANCES HAVE BEEN DETERMINED AND DEVIATIONS WILL BE CAUSE FOR REJECTION. REMOVE ALL BURRS AND SHARP EDGES

(16)
AN3106B20-27P
PIN NO'S.



(15)
AN3106B20-27S
PIN NO'S.

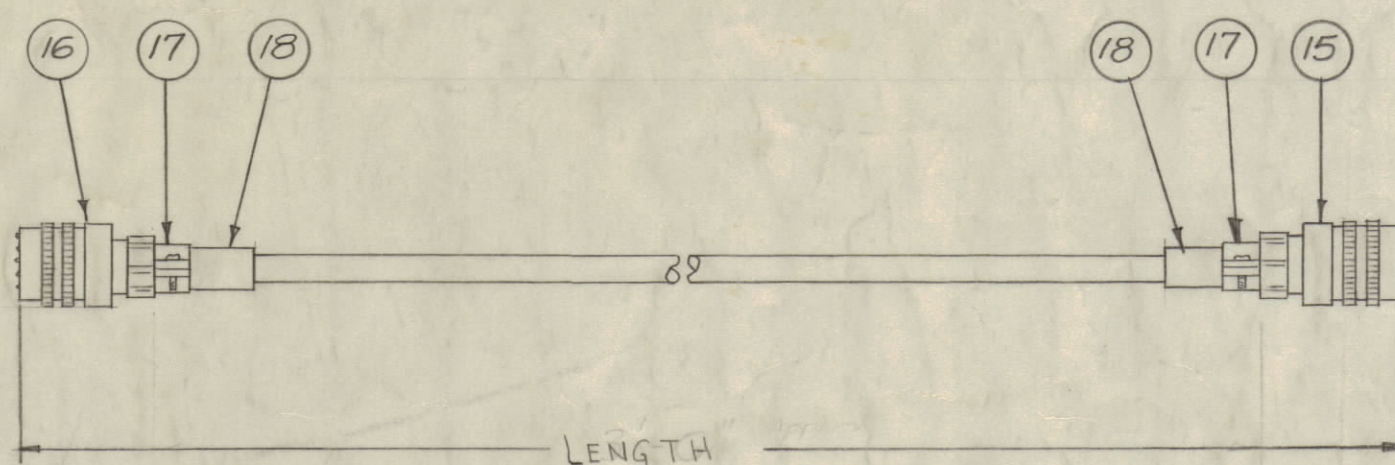


(14)

NOTE - BLANK WIRE LENGTH (INCLUDING STRIPPING) SHOULD BE 2" SHORTER THAN TOTAL LENGTH REQUIRED (END TO END)

PROPERTY OF: THE TECHNICAL MATERIEL CORPORATION MAMARONECK, NEW YORK

CA-346 G



CA-346-3-9
TMC BASIC NO. LENGTH 14 FEET 9/16 INCHES
EX. 3-9 = 3 FEET 9/16 INCHES

X	19	BS-100	Solder, Soft	
2	18	MS3420-10A	Bushing, Cable	
2	17	MS 3057-12	Clamp, Cable	
1	16	MS3106B20-27P	Connector, Plug, Male	PIQ1
1	15	MS3106B20-27S	Connector, Plug, Female	PIQ2
14	PX-100-1-.375	Insulation, Sleeving		Blk.
13	MWC16(19)U93	Cable, Insulated		White Orange
12	MWC18(16)U94			White Yellow
11	MWC18(16)U0			Blk.
10	MWC16(19)U6			Blue
9	MWC18(16)U96			White Blue
8	MWC22(7)U2			Red
7	MWC22(7)U92			Wh/Red
6	MWC16(19)U9			White
5	MWC18(16)U8			Grey
4	MWC18(16)U7			Violet
3	MWC16(19)U90			White Black
2	MWC16(19)U91			White Brn.
1	MWC16(19)U-1	Cable, Insulated		Brn.

G	1	IT. 7 WAS MWC 22(7)U-PINK	4-29-66	16166				
F	3	WIRE NOTE ADDED						
F	2	SPARE PARTS NOTE ADDED	10-2-61	5663				
F	1	LGTH. DIM. WAS "CLAMP TO CLAMP"						
E	1	CAG-1 DELETED	11/1/60	3359	BL			
D	1	WIRE NUMBERS REVISED	11/24/60	3321				
C	1	ITEMS 15, 16, 17, 18 CHG. "AN" TO "MS" DESIGNATION	5-24-60	2332				
B		INCORPORATED STD INTO DWG.	11-1-59					
A	1	ITEMS 4, 5, & 6 WERE MWC22(7)U-	11/20/57	1	16			

NOTE - FOR SPARE PARTS REQUIREMENTS OF THIS CABLE WITHOUT CONNECTORS, SEE CA-647.

1	SBE-3			
1	SBE-2			
1	SBE-1			
REQ. PER UNIT	MODEL	PROJECT NO.	ASSY. NO.	DATE
				7-23-57

REQ. ITEM	PART NO.	DESCRIPTION	SYMBOL
THE TECHNICAL MATERIEL CORP. MAMARONECK, NEW YORK			
CABLE, POWER,			
STOCK SIZE			
MATERIAL WEIGHT PER PC.			
TYPE & TEMPER			
HEAT TREAT. SPEC.			
FINISH & SPEC. NO.			