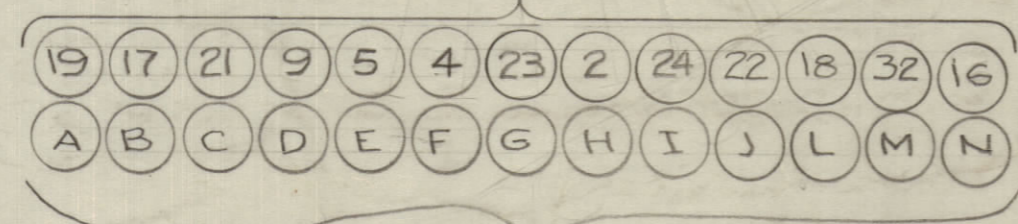
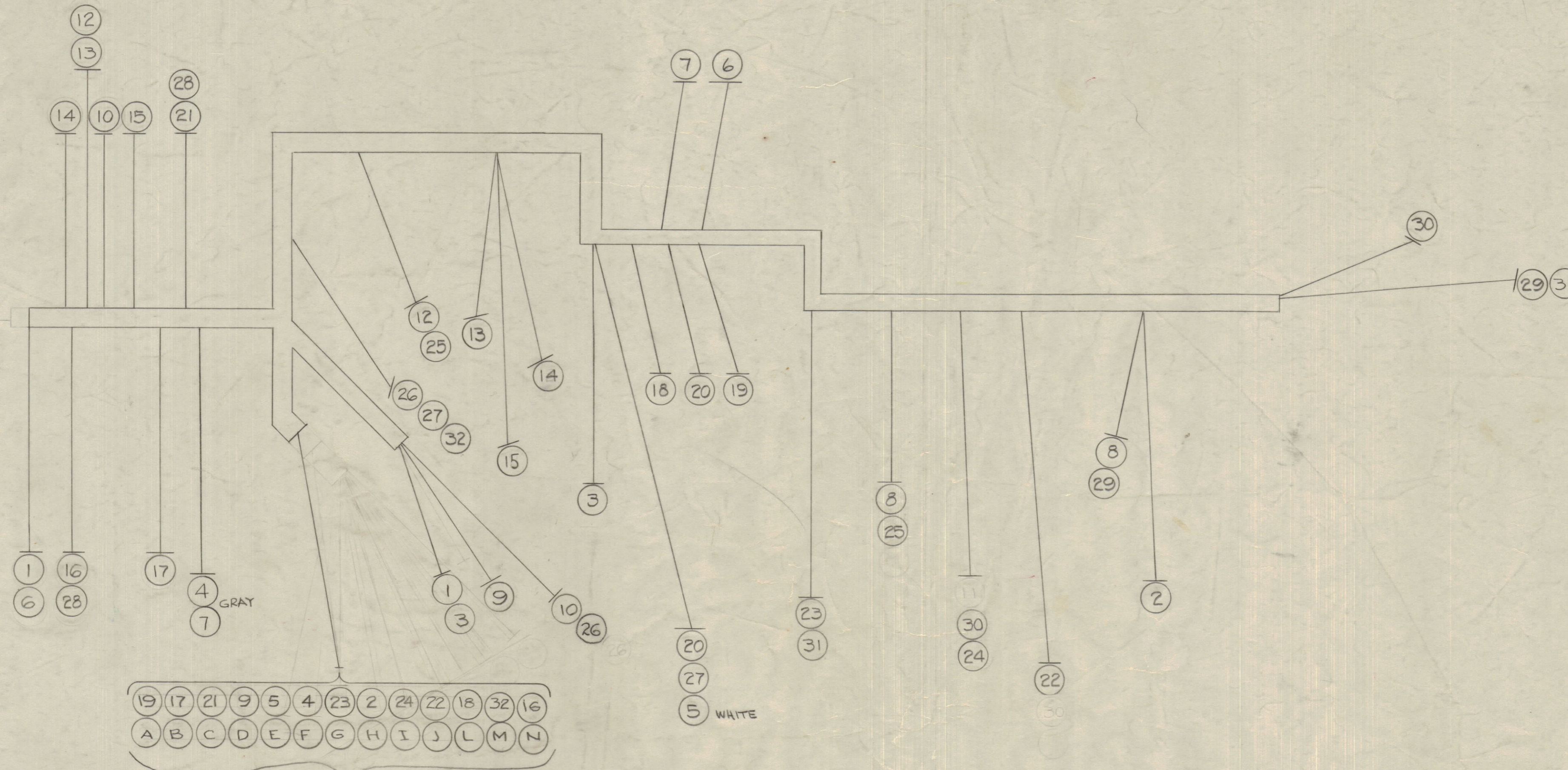


IF IT IS FOUND DESIRABLE TO CHANGE ANY TOLERANCE OR OTHER DETAIL SPECIFIED ON THIS DRAWING NOTIFY THE PURCHASER PROMPTLY.
 MAXIMUM ALLOWABLE TOLERANCES HAVE BEEN DETERMINED AND DEVIATIONS WILL BE CAUSE FOR REJECTION.
 REMOVE ALL BURRS AND SHARP EDGES

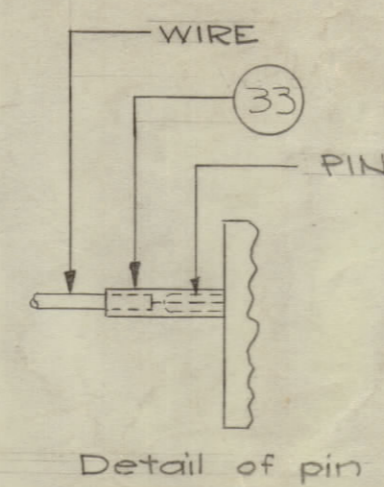
NOTICE TO PERSONS RECEIVING THIS DRAWING

THE TECHNICAL MATERIEL CORPORATION claims proprietary right in the material disclosed herein. This drawing is issued in confidence for engineering information only and may not be reproduced or used to manufacture anything without the written permission from THE TECHNICAL MATERIEL CORPORATION to the user. This drawing is loaned for mutual assistance and is subject to recall at any time.

Property of:
 THE TECHNICAL MATERIEL CORPORATION
 MAMARONECK, NEW YORK



NOTE
 ITEM 34 MUST BE ATTACHED
 BEFORE CABLE IS LACED.



Rear of plug shown (ITEM 34)
 Wiring detail connections to plug.

BOTTOM OF CABLE SHOWN

Wire lengths shown are total lengths.
 Allow 1/2" each end for stripping.

E	IT 487 RELOCATED IT 4 WAS 12 1/2, IT 7 WAS 18 3/4	12047	17895				
D	REVERSE CALLOUTS 4 & 50 IT 34	11/13/64	17168	RME			
C	CALLOUT 4 WAS 7; CALLOUT 7 WAS 6	11-11-65	13241	SE			
B	MWC WAS SRT	52342	2302				
A	BRK 3/8 23009 (ITEM 11) DELETED	12/29/67					
ISSUE	ITEM	CHANGED FROM	DATE	GN. NO.	DRAFTS	CHECKER	ENG. APP.
TOLERANCES		SCALE:					
ALL	DEC. DIM. ±	DRILL, PUNCH, COMMERCIAL STOCK					
OTHERS	ANGULAR DIM. ±	SIZES AND MANUFACTURERS					
		TOLERANCES ARE NOT INCLUDED.					

REQ. ITEM	PART NO.	DESCRIPTION	SYMBOL
1	34	M33102A-20-27E CONNECTOR, RECEPTACLE, Female	
33	PX-100-1-106	INSULATION, SLEEVING	
9 1/8	32	MWC-22(7) UO CABLE, INSULATED	BLACK
13 1/2	31		WH/RED
10 1/2	30		WH/BLUE
7 1/2	29		RED
7 3/4	28		BLACK
14 3/8	27		BLACK
9 1/2	26		BLACK
14	25		WH/RED
21 1/2	24		WH/BLUE
20 1/2	23	PINK	PINK
23 3/4	22		BLUE
9 1/2	21		WH/BLK
9	20		WH/BRN
15 3/4	19		BROWN
14 3/4	18		WH/YEL
10	17		WH/BRN
11	16		WH/ORB
14	15	PINK	PINK
13 1/2	14	PINK	PINK
13 3/4	13		YELL
12	12		YELL
11	11		DELETED
10 1/2	10		WH/BLK
9 1/2	9		VIOLET
8 1/2	8	PINK	PINK
16	7		GREY
17 1/2	6		VIOLET
17 1/2	5		WHITE
9 3/4	4		GREY
14 1/8	3		WH/GRY
24	2		RED
10 3/4	1	MWC 22(7) U97	CABLE INSULATED

STOCK SIZE		THE TECHNICAL MATERIEL CORP. MAMARONECK, NEW YORK	
MATERIAL	WEIGHT PER FC	CABLE, POWER SUPPLY	
		(W402) SBE-1 (A-1357)	
TYPE & TEMPER		6-13-57	98
HEAT TREAT SPEC		DRAWN	ELEC. DES. APP. MECH. DES. APP.
FINISH & SPEC. NO.		CHECKED	FINAL APPROVAL
		CA-344 E	

REQ. PER UNIT	MODEL	PROJECT NO.	ASSY. NO.	DATE
1	SBE-2			5-5-52
USED ON				

CA-344