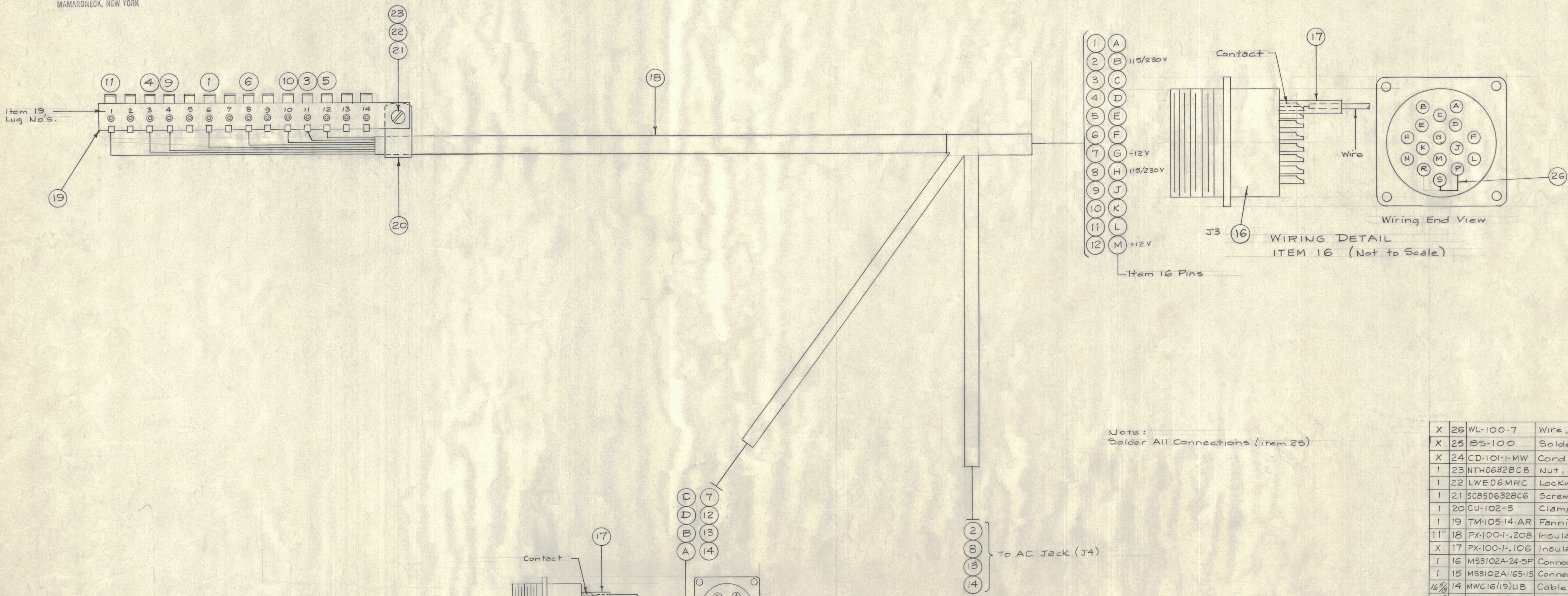


IF IT IS FOUND DESIRABLE TO CHANGE ANY TOLERANCE OR OTHER DETAIL SPECIFIED ON THIS DRAWING NOTIFY THE PURCHASER PROMPTLY.
 MAXIMUM ALLOWABLE TOLERANCES HAVE BEEN DETERMINED AND DEVIATIONS WILL BE CAUSE FOR REJECTION. REMOVE ALL BURRS AND SHARP EDGES.

NOTICE TO PERSONS RECEIVING THIS DRAWING

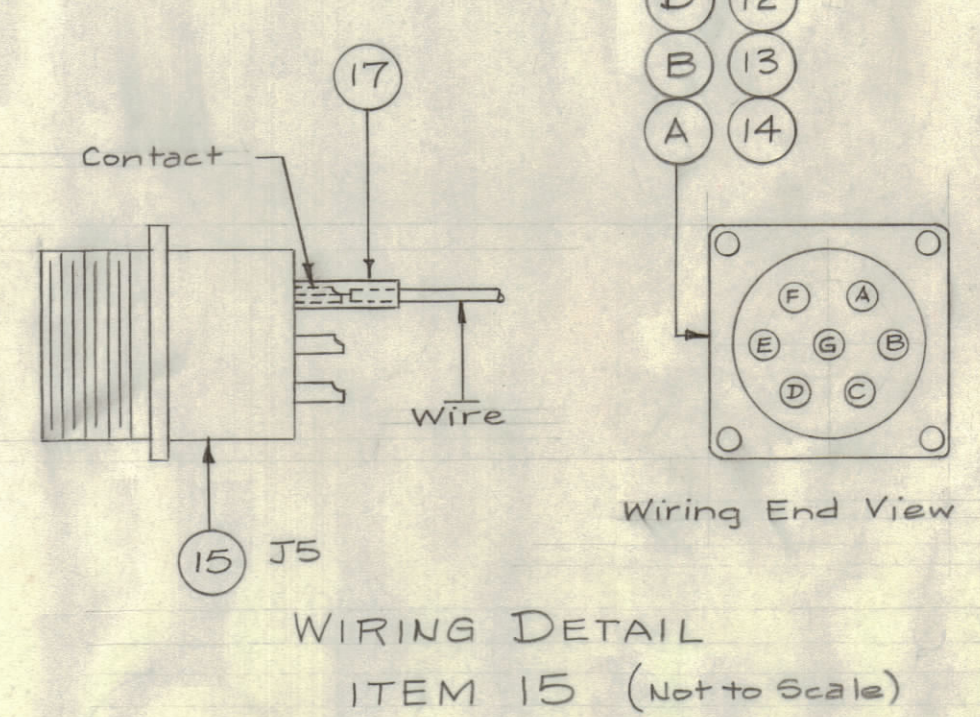
THE TECHNICAL MATERIEL CORPORATION claims proprietary right in the material disclosed hereon. This drawing is issued in confidence for engineering information only and may not be reproduced or used in manufacture any time shown hereon without permission from THE TECHNICAL MATERIEL CORPORATION to the user. This drawing is loaned for mutual assistance and is subject to recall at any time.

Property of:
 THE TECHNICAL MATERIEL CORPORATION
 MAMARONECK, NEW YORK



Note:
 Solder All Connections (item 25)

REQ. ITEM	PART NO.	DESCRIPTION	SYMBOL
X 26	WL-100-7	Wire, Buss	
X 25	BS-100	Solder, Soft	
X 24	CD-101-1-MW	Cord, Lacing	
I 23	NTH0632BC8	Nut, Hex.	
I 22	LWE06MRC	Lockwasher, Ext.	
I 21	SCBS0632BC6	Screw, Machine	
I 20	CU-102-3	Clamp, "G" Type	
I 19	TM-105-14-AR	Fanning Strip	
11"	18 PX-100-1-.208	Insulation, Sleeving	BIK.
X 17	PX-100-1-.106	Insulation, Sleeving	BIK.
I 16	MS3102A-24-5P	Connector, Recept, Male	J3
I 15	MS3102A-165-1S	Connector, Recept, Male	J5
16 3/8	14 MWC16(19)U8	Cable, Insulated, Stranded	Grey
16 3/8	13 MWC16(19)U90		White BIK.
12	12 MWC22(7)U2		Red
20 1/2	11 MWC22(7)U1		Brn.
17 1/2	10 MWC22(7)U9		White
19 1/8	9 MWC22(7)U3		ORG
10 7/8	8 MWC16(19)U8		Grey
12 1/4	7 MWC22(7)U0		BIK.
17 1/2	6 MWC22(7)U4		Yell.
16 3/8	5 MWC22(7)U5		Grn.
19 1/8	4 MWC22(7)U7		Viol.
16 3/8	3 MWC22(7)U93		White Brn.
10 7/8	2 MWC16(19)U90		White ORG
18 1/2	1 MWC22(7)U94	Cable, Insulated, Stranded	White Yell.



REQ. PER UNIT	MODEL	PROJECT NO.	ASSY. NO.	DATE
1	A-1279			3-4-58

THE TECHNICAL MATERIEL CORP.
 MAMARONECK, NEW YORK

STOCK SIZE

MATERIAL WEIGHT PER FC. (A-1279 to SBE-1 & A-1504)

TYPE & TEMPER 6 3/4/58

HEAT TREAT. SPEC.

FINISH & SPEC. NO. CA-340 D

ISSUE	ITEM	CHANGED FROM	DATE	CN. NO.	DRAFTS	CHECKER	ENG. APP.
D	3	Item 10 was Red	5/12/58	4	HQ	AJT	
	2	Item 9 was Black					
	1	Item 2 was White					
C	1	Jumpers 7-9-11 SW.FAN. STRIP DELETED	4/23/58	3	HQ	AJT	
B	1	Cable Redrawn & Revised wires # 2, 7, 8, 12, 13, 14. Added Item 15 Added (Per A-1504 12 Volt P.S.)	3/4/58	2	HS	ASJ	

TOLERANCES

SCALE:

ALL OTHERS DEC. DIM. ±
 FRAC. DIM. ±
 ANGULAR DIM. ±

DRILL PUNCH, COMMERCIAL STOCK SIZES AND MANUFACTURERS TOLERANCES ARE NOT INCLUDED.

CA-340 D