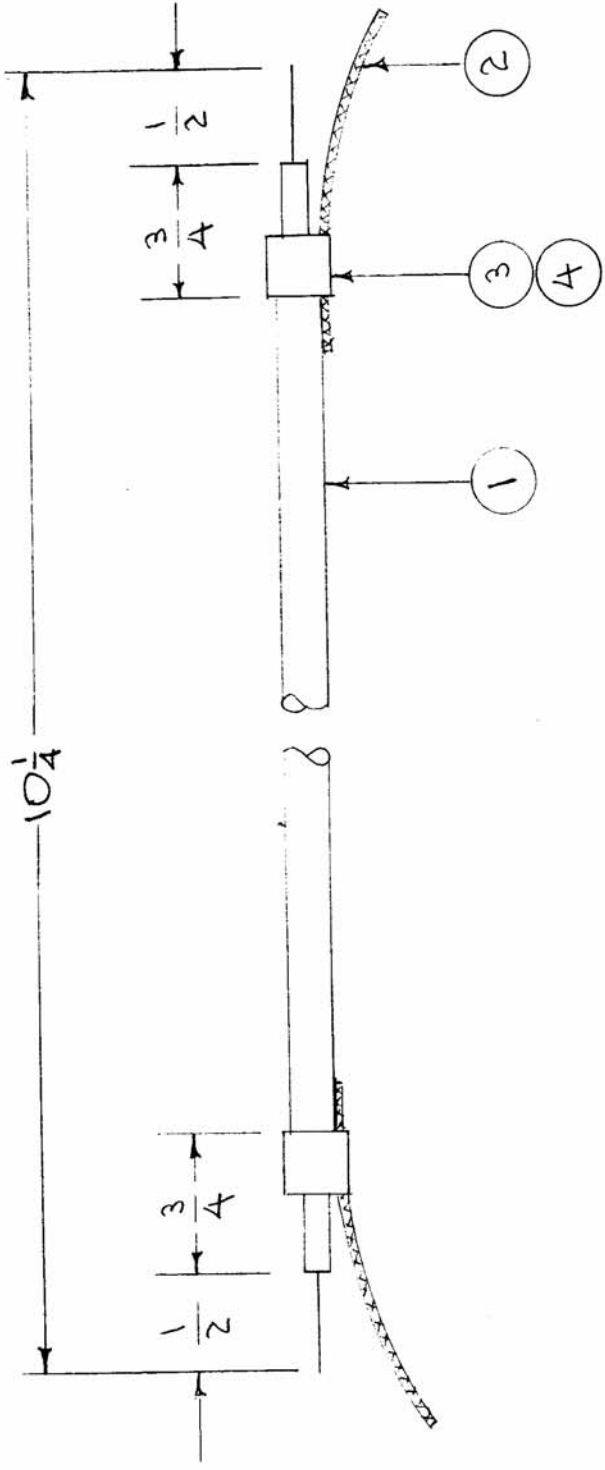


CA-309 A

USED ON  
 PROJECT NO. MARK I SERIES  
 MODEL GSB-1  
 ASS'Y. NO.  
 DATE 5-6-57

REQ. PER UNIT  
 1

IF IT IS FOUND DESIRABLE TO CHANGE ANY TOLERANCE OR OTHER DETAIL SPECIFIED ON THIS DRAWING NOTIFY THE PURCHASER PROMPTLY.  
 MAXIMUM ALLOWABLE TOLERANCES HAVE BEEN DETERMINED AND DEVIATIONS WILL BE CAUSE FOR REJECTION. REMOVE ALL BURRS AND SHARP EDGES



2	4	CU-101-1	FERRULE, INNER	SYMBOL
2	3	CU-101-2	" , OUTER	
3"	2	WL-103-1	SHIELD, FLEXIBLE	
	1	RG-58/U	CABLE, COAXIAL	
REQ. ITEM	PART NO.	DESCRIPTION		
		THE TECHNICAL MATERIEL CORP. MAMARONECK, NEW YORK		
STOCK SIZE		CABLE, 455 KC INPUT		
MATERIAL	WEIGHT PER PC.	MARK I GSB-1		
TYPE & TEMPER		CD 612116	PLX	ME
		DRAWN	ELEC. DES. APP.	MECH. DES. APP.
HEAT TREAT. SPEC.		J. J. J.	A. J. J.	
FINISH & SPEC. NO.		CHECKED	FINAL APPROVAL	
				CA-309 A

ISSUE ITEM	CHANGED FROM	DATE	CN. NO.	DRAFTS CHECKER	ENG. APP.
A 1	ITEM 2 WAS	12/10/56	1	J. J. J.	J. J. J.
TOLERANCES					
DEC. DIM. ±					
ALL FRAC. DIM. ±					
OTHERS ANGULAR DIM. ±					
DRILL, PUNCH, COMMERCIAL STOCK SIZES AND MANUFACTURERS TOLERANCES ARE NOT INCLUDED.					