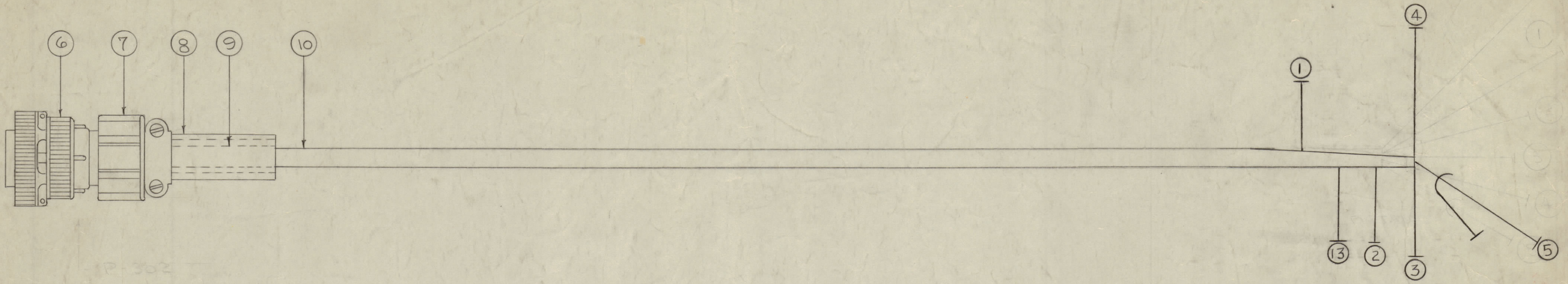
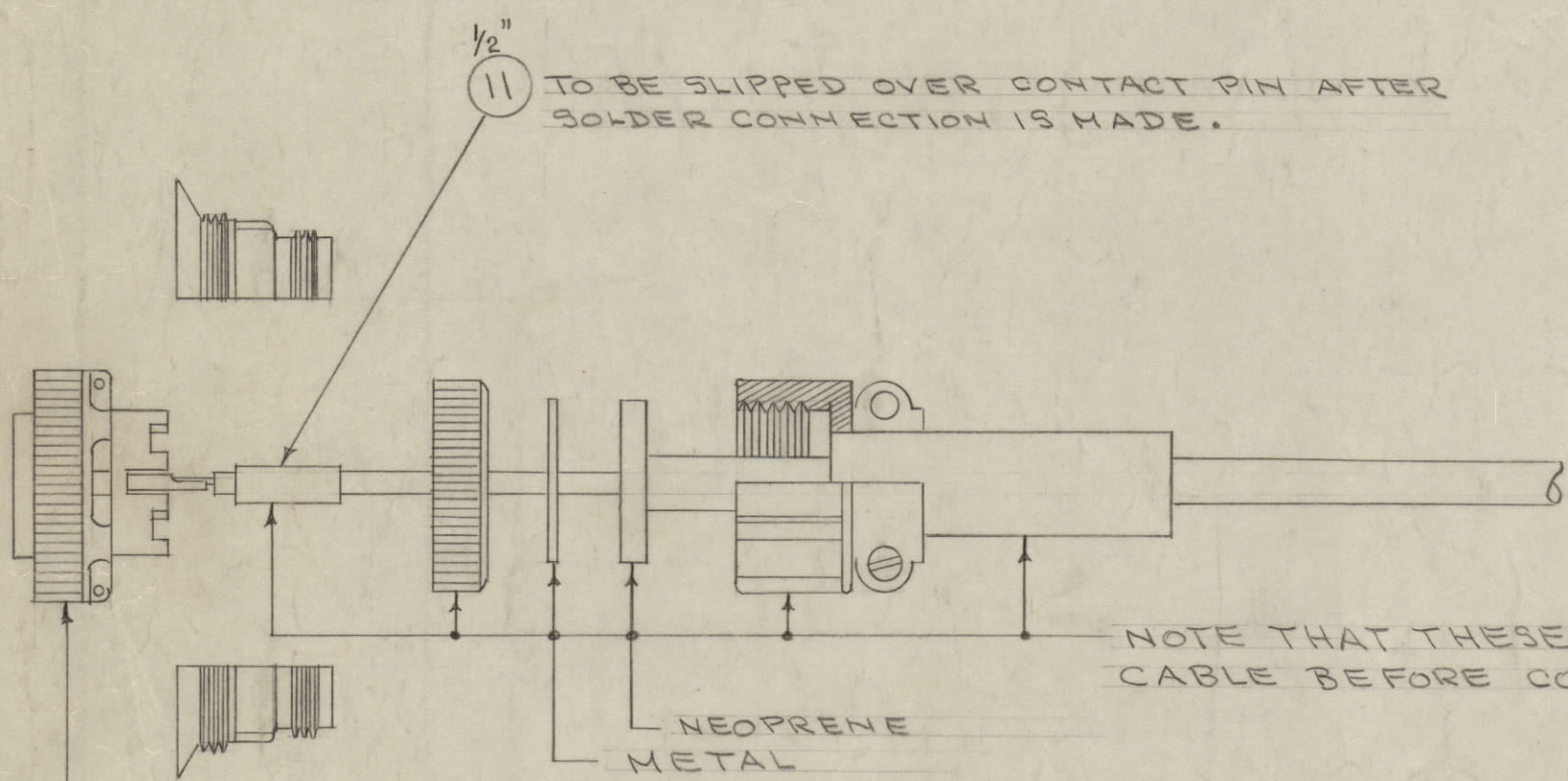


IF IT IS FOUND DESIRABLE TO CHANGE ANY TOLERANCE OR OTHER DETAIL SPECIFIED ON THIS DRAWING NOTIFY THE PURCHASER PROMPTLY.
 MAXIMUM ALLOWABLE TOLERANCES HAVE BEEN DETERMINED AND DEVIATIONS WILL BE CAUSE FOR REJECTION.
 REMOVE ALL BURRS AND SHARP EDGES



NOTICE TO PERSONS ORDERING THIS DRAWING
 THE TECHNICAL MATERIEL CORPORATION claims proprietary right in the material disclosed hereon. This drawing is issued in confidence for engineering information only and may not be reproduced or used to manufacture anything shown hereon without permission from THE TECHNICAL MATERIEL CORPORATION to the user. This drawing is loaned for mutual assistance and is subject to recall at any time.
 Property of:
 THE TECHNICAL MATERIEL CORPORATION
 MAMARONECK, NEW YORK

CA-281 J



TO BE SLIPPED OVER CONTACT PIN AFTER SOLDER CONNECTION IS MADE.

NOTE THAT THESE ITEMS MUST BE SLIPPED OVER CABLE BEFORE CONNECTIONS ARE MADE.

THIS RING MUST BE IN POSITION SHOWN BEFORE CONNECTIONS ARE MADE

ITEM	COLOR	FROM	TO	
1	RED	ITEM 6 TO PIN B	STAND OFF	(R 301 CONNECTION)
2	BROWN	" " D	XV 302 PIN 5	
3	WH/BLUE	" " C	STAND OFF	(R 304 CONNECTION)
4	BLACK	" " E	GROUND	(SAME LUG AS C312)
5	WH/SHIELD	" " F	XV 302 PIN 8	(GROUND SHIELD ON GND FOR XV 302)
13	BLUE	" " A	STAND OFF	(JUNCTION L 302 AND R 302)

INCLUDE SHIELD OF ITEM 5 IN PINE CONNECTION
 CONNECT WIRE TO PIN "F"

REQ.	ITEM	PART NO.	DESCRIPTION	SYMBOL
X	14	CD 101-1MW	CORD, NYLON, LACING	
X	13	MWC 22(7)U6	CABLE, INSULATED	BLUE
X	12	BS-100	SOLDER, SOFT	
X	11	PX-100-1-106	INSULATION, SLEEVING	
16 3/4	10	PX-100-1-208	INSULATION, SLEEVING	
1	9	MS3420-6A	SLEEVING	
1	8	MS3420-8A	"	
1	7	MS3057-8	CLAMP, CABLE	
1	6	MS3106B-165-1P	CONNECTOR	
X	5	MWC 22(7)S9	CABLE, SHIELD FLEX.	WHITE
X	4	MWC 22(7)U0	CABLE, INSULATED	BLACK
X	3	96		WH/BLUE
X	2	1		BROWN
X	1	2		RED

ISSUE	ITEM	CHANGED FROM	DATE	CN. NO.	DRAFTS	CHECKER	ENG. APP.
J		DELE. QTY IT. 1 TO 5 & 11 & 13. ADDED IT 14	1-9-67	17650	RME	JCB	
H		REVISE BREAKOUTS IT. 1 TO 5 & 13. REV. REQ. B/M	1-4-66	17199	RME	JCB	
G	1	ITEM (8) WAS W1-101-4	5-10-63	8962	RE	JCB	

TOLERANCES	SCALE:
ALL DIM. ± DEC. DIM. ± FRAC. DIM. ± ANGULAR DIM. ±	DRILL, PUNCH, COMMERCIAL STOCK SIZES AND MANUFACTURERS TOLERANCES ARE NOT INCLUDED.

REQ. PER UNIT	MODEL	PROJECT NO.	ASS'Y. NO.	DATE
1	AD-100			1-28-60

REQ.	ITEM	PART NO.	DESCRIPTION	SYMBOL
THE TECHNICAL MATERIEL CORP. MAMARONECK, NEW YORK				
CABLE, MO. POWER				
OVEN				
TYPE & TEMPER				
HEAT TREAT. SPEC.				
FINISH & SPEC. NO.				